

The Bradford Bridge

COMMUNITY NEWS *for* NEIGHBORS *by* NEIGHBORS

MONTHLY BRIEFING: Town Board Reports

BOARD OF SELECTMEN

Pumper Truck Only one vendor submitted a quote. Fire Chief Nowell said there would be a 5% price increase if the purchase happens after April 15. If the Town pays the full amount upfront, there will be a \$12,000 discount. In addition, the Town will receive \$5,000 in trade for Engine 2, and the department can still use the truck for the next two years. There will be a one-year warranty. The Board approved a motion to sign the contract.

SCBA Bottles The Board approved a motion for the purchase of 14 SCBA (self-contained breathing apparatus) bottles in the amount of \$15,400. The Fire Department plans to purchase these in phases, and this is about half the packs they currently have.

Chipper The Board approved a motion for the purchase of a new chipper at a cost of \$39,770.

Energy Improvements The \$12,000 project for the highway garage qualifies for NH Saves funding and, if approved, they would cover 35% of the project. By consensus, the Board agreed to use Shakes to Shingles for this project and that the project start date should be scheduled around the repair work to the side of the building.

Promotion Master Patrolman Officer Neil Flanagan has been promoted to Sergeant.

Grants Police Chief Shaughnessy is looking into two grants. One in the amount of \$22,722 for the purchase

(Continued on page 8)

Town Organizations Bring Joy!



Rosewood Inn, Resident Bunny

Thanks to some cheerful volunteers in town, Bradford was hopping with Easter spirit this spring. In the season of new beginnings, Parks and Rec initiated a new event that is sure to become a favorite. The committee of Devin Pendleton, Katie Olohan, Jon Roy and Bruce Edwards acted on a suggestion from Police Chief Ed Shaughnessy and offered to assist the Easter Bunny with outdoor deliveries. Seventeen homes in Bradford and Newbury signed up and additional volunteers with headlamps made clandestine deliveries on that rainy eve, much to the delight of parents and children alike on Easter morn. Thanks to Shanna and Lyrica Griffin, Marybeth Naughton and David Pendleton for helping out. After expenses, Parks and Rec raised \$640 to help with further programming. Big kudos to this lively town organization that just keeps on delivering fresh and fun ideas for Bradford citizens to enjoy.

Likewise, Brown Memorial Library hosted their annual event by providing a lawn brimming with hidden eggs. One hundred and twenty folks came

(Continued on page 5)

What Do Mother's Day and Memorial Day Have in Common?

More than I knew. Both of these traditional legal holidays began as a result of the Civil War.

Mother's Day

Three women – who championed efforts toward better health, welfare, peace, and love – contributed to the day we all celebrate on the second Sunday in May each year, Mother's Day. It essentially began as a women's movement to better the lives of Americans.

One of these women, Ann Reeves Jarvis, provided hygienic environments in hospitals that tended Civil War soldiers, both Union and Confederate. After the war, she proposed a Mothers' Friendship Day to promote peace between former Union and Confederate families.

Julia Ward Howe authored the famous Civil War anthem, "The Battle Hymn of the Republic" in 1862, and helped to ensure sanitary conditions during the care of sick and wounded soldiers. In her "Mother's Day Proclamation" from 1870, Howe felt that mothers should

(Continued on page 4)

MAY HAIKU

lilacs scent the breeze

bumpy pedaling back
roads

stronger sun today



KB



P.O. Box 463 • Bradford, NH 03221
bradfordbridge345@gmail.com
bradfordbridge.org

BOARD OF DIRECTORS

Audrey V. Sylvester, President,
Jeni Lauder, Treasurer, Mary Keegan-
Dayton, Secretary, Marcia Keller,
Kathleen Bigford, Don Moss and
Harriet Douglass

EDITOR

Kathleen Bigford

REPORTING

Devin Pendleton, Monthly Briefing
Caitlin Banaszak, Area Events

DESIGN

Leah Cummings, Graphic Artist
Don Moss, Advertising Coordinator

ADVERTISING

To place an ad, call
Don Moss at 938-2230.

BUSINESS MANAGER

Jeni Lauder

SUBSCRIPTION/DISTRIBUTION

Harriet Douglass, Nola Jordan

SUBSCRIPTION INFORMATION

To receive The Bridge by mail,
please send a \$25 check
to cover mailing costs to:
P.O. Box 463 Bradford, NH 03221

SUBMISSIONS

Anyone is welcome to submit articles
and/or photographs of interest to the
community. We reserve the right to edit
submissions.

PRINTING

RC Brayshaw & Company, Inc.

Town Offices

SELECTMEN'S OFFICE

Phone: 938-5900

Monday – Thursday: 8:00 AM – 4:00 PM
(closed 12 Noon – 1 PM)
Friday: 8:00 AM – Noon

TOWN CLERK/TAX COLLECTOR

Phone: 938-2288

Tuesday: 8 AM – 12 PM/ 1 PM – 4 PM
Wednesday: 12 PM – 5 PM
Thursday: 9 AM – 12 PM/ 1 PM – 6 PM
Friday through Monday: Closed

Town offices are temporarily located at
Bradford Area Community Center, 134 East
Main St. P.O. Box 436. Bradford, NH 03221

From the Bridge

And the seasons, they go round and round

And the painted ponies go up and down

We're captive on the carousel of time

We can't return, we can only look

Behind, from where we came

And go round and round and round, in the circle game.

From "Circle Game" by Joni Mitchell

One of the pleasures of this job is taking the time to see "from where we came." Looking behind enhances the planning of monthly selections that add to the circle. On Page 6 you'll see items that Don Moss found in the May 1992 edition. What strikes me is how some things have changed so little in 30 years. Fred Winch's 1992 gardening insights are as true today as they were then. As is Susan Smith's 1992 calligraphed ad for Marlene's Hair and Florist Shop.

I love the community vibe of this May 2022 edition where you'll find

- * Devin's Monthly Briefing. Some committee and board minutes were not available at the deadline. We'll catch up next month.
- * How Town organizations brought seasonal joy by Laurie.
- * Reflections on the war in Ukraine by Natalia.
- * "Battles Farm is Becoming Trail's End Farm" by Dan.
- * Hanna's poem that reminds us about the benefits of self-care.
- * Original art by Anne.
- * Mosses and their amazing ability to adapt to nature's interruptions by Ann.
- * What Mother's Day and Memorial Day have in common by me.
- * Lois's Transfer Station and Recycling Center news.
- * The Library Lantern by Ellen.

And much more INCLUDING advertising from our loyal local businesses. Their generous support brings The Bradford Bridge to you for free. As the mud hardens and daylight lengthens, please venture out and see all they have to offer.

Enjoy another go round into summer!!

Kathleen Bigford, Editor

and the hardworking team that brings monthly neighborly news

Land Acknowledgement Statement – *We are on the unceded land of Nd'akinna which has long served as a site of meeting for Abenaki people from Pagôntegok (Contoocook), O'quasskikonaquan (Newbury) and beyond for thousands of years. Nebizonbik (Bradford Springs) provided healing waters and people exchanged goods at the village site behind Lake Massasecum, calling this land home. The town of Bradford honors, recognizes, and respects these Abenaki, as the traditional stewards of the lands and waters on which we gather today. In that spirit, today we will begin by acknowledging that we are guests in this land. We need to respect and help protect the lands within our use and share of the bounty with our Abenaki partners today.*



Letters to Our Editor:

To the Editor:

It has been more than 2 months of war in my home country. The brutality and terror of war crimes that the Russian army is committing (as the world has witnessed in liberated Bucha and Irpin) have not been seen in Europe since World War II. Among the survivors of the current Russian attack there are survivors of WWII, including my grandma, who say that they have not seen such brutality as the Ukrainian people are experiencing now.

The reports of rape, torture, murder, destruction committed by the Russian army are hard to stomach. It is hard to accept that this is done by human beings. My heart and mind short circuit when reading and witnessing these inhumane crimes. Does the human heart even have the capacity to hold, understand, and process what is being committed and WHY?

As my husband Pete and I were discussing current news of besieged Mariupol I caught myself on a thought – do we even comprehend the full meaning of that statement? When we hear a reporter say: “at least a 1000 of people remain without food and water for the past month” - do we stop to think what does it really mean not to have water and food? That city is not just a figurative compilation of buildings and streets. The city is real people, humans just like you and me, their homes that they worked so hard to build or buy, their gardens, schools, neighborhoods,



families, all their lives are that city. It is a child, mother, sister, grandparent, just like your own, who is without water, thirsty and starving, whose life has turned into survival underground in the bomb shelter hiding from constant shelling, air raids and attacks for the past 2 months, whose home and everything they dreamed for, hoped for has been destroyed, who has no way to be evacuated or to receive any basic humanitarian relief because the “green corridors” don’t work.

For the past several weeks the prayers and thoughts for the cities of Kharkiv, Mariupol and other eastern regions in Ukraine who are under heavy attacks have been deep and heavy in my heart. I do hope that these people are provided a safe way to evacuate, that the Ukrainian army gets the help and equipment that they need to push back the Russian occupiers, that the children who spent the last 2 months underground will have a chance to see the sunshine, the blue sky, and the blooming spring. The Ukrainian president brought a burning question to the United Nation Security Council: “If you cannot provide security, why do you exist?”.

Ukrainian people are suffering the effect of unchecked tyranny. They are paying the high price for freedom that we in the west often take for granted. As Martin Luther King said: “The injustice anywhere is a threat to justice everywhere”. I invite you again to stand for freedom and justice for people in Ukraine. Even a small donation can feed a child, save a life and bring the victory of Ukrainian soldiers closer.

Here are some websites where you can securely donate to help Ukraine:

- <https://www.comebackalive.in.ua/>
To support Ukrainian army

- <https://razomforukraine.org/donate/>
Emergency relief

- <https://wck.org/>
World central kitchen, feeding people in the war zone and on the borders

Natalia Karaulova
Bradford, NH

To the Editor:

Science aligns truth; politicians malign science.

Global warming is happening. To understand better where climate is going, a good source is Scientific American (www.scientificamerican.com), a science forum since 1845. It remains devoted to a green economy and green environment. It is a wholly independent publication – no agendas. A neutral and factual forum. You can access many articles online regarding global warming. Scientific American offers some salient perspectives.

The US government owns 57 power plants. None have pollution controls. If these power plants were outfitted with pollution controls, USA carbon pollution would be reduced by 30%. That exceeds the Paris Climate Accord goal per country. This is within our control right now.

The US government can (but will not) reduce carbon pollution quickly and dramatically. To do so solves a major problem. Eliminate a crisis and the government has no argument to force regulatory controls in the altruistic name of “saving the planet.”

China is the biggest carbon polluter. It is building many coal fired power plants (no pollution controls) to supply its economy with electricity. If every country reduces carbon pollution 30% and China does nothing, global warming continues.

China must act to reduce carbon pollution. The top five countries for carbon pollution are China, USA, India, Russia, and Japan. These countries account for 58% of the world's carbon pollution. China represents half of the 58%. (climatetrade.com) If China does not act, global warming continues.

A green economy and green environment are far healthier than a fossil fuel economy. The US can only reach a green economy with nuclear power included as a key part of our electricity (energy) needs.

(Continued on page 4)

Letter to the Editor

(Continued from page 3)

The USA does not have the political “will” to embrace nuclear power (at this time). Our “will” as a nation must change or we can not reach a green economy or green environment.

Scientific American (the science community) offers many viable ways to ‘go green’ efficiently and economically. Our government ignores these beneficial recommendations. Cap and Trade/Carbon Free and Dividend solve no problems. They do empower our government to implement controls and regulations that impact and limit our freedoms and burden society (us) with unnecessary costs.

Some scientists publish articles that embrace climate ‘gloom and doom.’ They are climate alarmists, self absorbed, egotistical people that prefer to make a name for themselves. These scientists will never be published in Scientific American. Perhaps they will find a home in ‘Mother Earth’ or another agenda driven public group.

Be empowered, be skeptical, and be a thinker. Know your source when reading articles. Evaluate, with a critical eye, the publication and authors’ credibility.

‘There is nothing so powerful as truth, and often nothing so strange.’

– Daniel Webster

Steve Pierce

What Do Mother’s Day and Memorial Day Have in Common?

(Continued from page 1)

gather to “prevent the cruelty of war and the waste of life since mothers of mankind alone bear and know the cost.”

The activism of Ann M. Jarvis, daughter of Ann Reeves Jarvis, brought about the signing of a bill in 1914 by President Woodrow Wilson designating the second Sunday in May as a legal holiday to be called “Mother’s Day.”

Much to the disappointment of Ann Jarvis, what began as a legal holiday celebrated simply and reverently with church services honoring all mothers living and dead became a commercialized day of cards and gifts. She spent the final years of her life trying to abolish the holiday she had helped to establish.

Memorial Day

Decoration Day, the holiday’s original name, was established to honor those who died in American wars. During the Civil War citizens would place flowers on the graves of those who had been killed in battle. After the Civil War, many cities held observances in May for the families of both Confederate and Union soldiers who had died serving their cause.

In 1868 John A. Logan, the commander in chief of the Grand Army of the Republic, an organization of Union veterans, promoted a national holiday on May 30, “for the purpose of strewing

with flowers or otherwise decorating the graves of comrades who died in defense of their country during the late rebellion.”

After World War I, the day came to be observed in honor of those who had died in all U.S. wars, and its name changed from Decoration Day to Memorial Day. Since 1971 Memorial Day has been observed on the last Monday in May. It is observed with the laying of a wreath at the Tomb of the Unknowns in Arlington National Cemetery in Arlington, Virginia, and by religious services, parades, and speeches nationwide.

Kathleen Bigford

TWIGS

CUSTOM FIREWOOD SALES

603-938-5992

twigsforest@gmail.com

www.twigsforestservices.com

NOW DELIVERING

Green & Seasoned Firewood



Camp-Wood Available

The 121 Shop

Jewelry~Plants~Vintage

121 East Main Street, Bradford
603-938-2409
Open Friday & Saturday 10-4

www.the121shop.com

at Newbury Harbor

Bubba's

BAR & GRILLE

Open daily 11:30am until 8pm Sun-Thurs, 'till 9pm Fri & Sat

Order Online at bubbabarandgrill.com or call 763-3290

976 Route 103, Newbury, NH · bubbahmplt@tds.net

Town Brings Joy!

(Continued from page 1)

to hear a story read by Maria Storm before being let loose on the grounds. Bonnets off to librarian Ellen Barselle for encouraging family programming both new and traditional. And cheers to the Friends of the Brown Memorial Library for funding, arranging and perpetuating this popular custom. Thanks to volunteers

at the Rosewood Kitchen. Innkeepers Odo and Stan Ovrevik welcomed 62 children aged infant to ten years old with free treats and photos. Their charming setting and natural neighborliness create a picturesque scene worthy of Norman Rockwell every spring.

The Bradford Community Church balanced out the bunny theme with a reverent observance of Holy Week by hosting



One little bunny finds her egg up high in a tree, families come together at the library, and another lucky bunny gets to meet EB himself! Celebrations all around town for Easter this year -- Happy Spring to all!

Connie Brookes, Laura Beaton, Sandy Paul, Harry Wright, and Tracey Quigley. Special thanks to the fourth graders at the Elementary School who stuffed the eggs for the younger set to discover.

Another annual spring highlight was held at the Rosewood Country Inn with Mr. Easter Bunny himself in attendance. This year featured their first craft show as well as refreshments provided by the Moments

a Soup and Bread Supper open to all with Scripture readings plus Communion on Maundy Thursday. This culminated in an Easter Breakfast and Service led by Reverend Bob Wyand on Sunday to herald the change in season and the return of hope.

Bravo, Bradford! Thanks to all who reached out to friends and family to reflect and celebrate. Community involvement may be what we need most as we emerge from the pandemic with appreciation for what we have endured and new wonder for the possibilities that lie ahead.

Laurie Buchar

Mountain View Senior Center Update

As with many organizations the Mountain View Senior Center located at the Bradford Area Community Center was closed due to the COVID-19 pandemic in early 2020 with minimal reopening in spring of 2021. Recently Harriet Douglass shared some insights of how the closing of the Senior Center affected her. Harriet and I are both volunteers at The Bradford Bridge. She is known by many as an active community supporter including co-founding the Lake Sunapee Region VNA.

Over the past 15 years or so Harriet has enjoyed much of what the Senior Center has to offer. What Harriet missed most was, "Meeting with people. We could talk on the phone and meet at friends' homes, but there was no place to go out and do things. I missed that a lot. When you live alone and you can't get out, it's not healthy. Many seniors are single and socializing is very important."

Happily, the Senior Center is now offering all activities under the guidance of Roberta Hixson, the new Meals on Wheels/Senior Center Manager. Roberta is a mother of 10 and was a nurse for 25 years. When she applied for the Meals on Wheels job she was recruited for the Mountain View Senior Center Manager position as well.

Roberta is already answering the need for socialization with an in-person brunch served on the first Friday of each month. And she is planning more in-person meals as soon as attendance picks up. Roberta is also hoping to revive occasional day trips, something that Harriet and others have been missing.

All Senior Center activities can be found on the "Bradford Community Events" calendar in this and every edition of the Bradford Bridge.

Roberta welcomes suggestions and can be found at the Bradford Area Community Center Monday-Friday, 8:00 am - 2:30 pm and can be reached at 603 938-2104.

Kathleen Bigford



Tyler Lawn Care
LANDSCAPE DESIGN • INSTALLATION • MAINTENANCE

- Full Landscaping Services
 - Stone Walls
 - Patios & Terracing
 - Yards & Gardens
 - Lawn Maintenance
- Residential & Commercial

Providing Exceptional Quality & Service with Pride Since 1998

T: 456-2063 • C: 608-5912 • tyler@tylerlawncare.com
Visit our website to see our incredible projects!

TylerLawnCare.com

WALKER
AUTOMOTIVE

Quality < Dependable > Friendly
Automotive Service & Repair



603-526-4848
Rt 11, Wilmot, NH

Major & Minor Repairs Foreign & Domestic Vehicles

www.WalkerAutomotiveInc.com




Looking back... THIRTY YEARS AGO

Scrolling through the Bradford Bridge archives is like looking at old photo albums. In celebration of 30 years of news by and for neighbors here are a few gems that are as timely now as they were then.



From May 1992

GARDENING by Fred Winch

The April "showers" we hoped for came as substantial snows which miraculously disappeared as the south winds and warm temperatures arrived. Crocus and daffodils in sheltered spots showed color, but we are having a later-than-average spring.

It should be warm and dry enough come May Day to have the garden tilled and the early veggies, such as onion sets, beets, carrots and of course peas, in the freshly prepared ground.

Those six packs of tomatoes, peppers and eggplants will be ready for a stimulating feeding of a 5-10-5 solution of liquid plant food, which should last until they will be set in the garden by the hoped for "frost free date" on May 30. Sweet Spanish onion seedlings also prefer to be in the ground early in order to keep ahead of weed competition.

In all this planting activity, try to keep in mind that soil should be fresh, but dry enough so that it is not compacted too much from the planting activity. Stay on the access paths and, when through the planting, loosen the soil of the paths again by raking. Due to the April snows, many have probably not sowed radishes, planted early lettuce plants or seeds, and spinach. This season would be a good one to try out the effectiveness of Reemay or floating row covers to try to get back those lost days with heat trapped for those early plants by such covers.

The compost pile should be investigated and the best of it used in the beds of the early veggies - compost is of course fertilizer, but it is also able to trap and hold moisture, which is essential to the rapid growth of those early leafy vegetables. The light sandy soil especially benefits from compost.

One of the ways to keep a bit ahead of the season with such plants as summer squash, zucchini, cukes, melons and okra is to plant, just after May 15, seeds of such plants in pots of starting mix or in Jiffy 7 pots. Three to four seeds per pot is enough for each hill of squash or cukes. After they germinate, reduce the cucumbers to the best, most vigorous plants, and grow the pots in your hot bed or on a sunny window sill, gradually hardening them off until they can be planted out about June 5-10. An alternative is to plant seeds in hills in the garden about the same date and cover the hill with a HotKap, an individual temporary greenhouse. Once the seedlings begin to push against the HotKap, slit the covering for ventilation and gradually allow the seedlings more light and room to grow.

In a normal year, corn would be planted by May 15, later plantings at two week intervals. Remember last year, the season was two weeks early. This year our fickle climate may be late or average - but anyway, "The winter is past, the rains over and gone, the flowers appear on the earth, the time of the singing birds is come and the voice of the turtle is heard in the land." Enjoy.

Fred Winch (1914-2008) moved to Bradford from Newfield, NY in 1976 after a distinguished career at Cornell University. He was a founding member of the Bradford Voters Coalition and the Bradford Bridge. He loved gardening and wrote "Gardening" for several years. During his time in Bradford he was involved in many town organizations including: Selectman from 1977-1983 and Chairman from 1979-1983, the First Baptist Church of Bradford as Chairman of the Board of Trustees; Treasurer of the Bradford Historical Society, and the Bradford Conservation Commission.

Now a mother of two, here is the 1992 Easter Bunny's adorable helper. Who can name that bunny!?

A lovely hand-drawn ad for Marlene's Florist Shoppe from local artist, Susan Smith. Thirty years later, Marlene's address and phone number are still the same!



The turnout was terrific for this year's cold and snowy Easter egg hunt, sponsored by the Friends of the Brown Memorial Library. Some of the children may have enjoyed the hunting advantage of snow, but the Easter Bunny surely prefers warm and sunny.

Battles Farm is Becoming Trails End Farm

This past week President Joe Biden told Americans to expect “real food shortages” this summer. Meanwhile, family farms are feeling enormous economic pressures due to the increased cost of fuel, fertilizer, and other supplies. New Hampshire has a strong agricultural history, and agriculture remains an important part of our state’s economy. That history should be respected and preserved, and the family farms that remain must be appreciated and supported for what they do, including feeding the nation.

In 2022, most farms in New Hampshire are relatively small at just 30-40 acres. Nearly 4,100 farms across our state produce a wide range of farm products, including milk, fruits and vegetables, meat, eggs, pumpkins and Christmas trees. However, most farms in New Hampshire do not produce enough income to support a family. This does not bode well for New Hampshire farming, and it is why it is so important that we support our local farms.

A recent article in the Concord Moni-

tor pointed to the fact that 67% of New Hampshire’s farms have annual sales of less than \$10,000. Unfortunately, most farms in New Hampshire make their sales to farm stands and community markets and not to larger grocery stores. It is no surprise that in the last ten years New Hampshire has witnessed a 10% decline in acreage dedicated to farming and just 425,000 of our state’s 6 million acres are dedicated to farming.

Over the last year I have been working with my partner to restore and restart Battles Farm in Bradford, NH. A formerly productive farm, Battles Farm fell into disrepair due to insufficient revenues and a resultant inability to meet expenses. The 1800 era barn was nearing collapse, including an unstable foundation with significant wood rot and sagging beams (two of which are King’s Pine beams, from Bradford). Work on the farm began last April, starting with the restoration of the barn’s foundation. The barn was jacked up, new footings were poured, support beams replaced, and the barn was lowered back into place.

Next up was new flooring, the replacement of an entire exterior wall, new floors, roof repairs, and replacement siding. The initial project will wind down soon, and more work will be done as time and resources permit. Beyond the barn, two pastures will receive new fencing in preparation for the return of dairy cattle, goats, and lamb. A chicken coop will be constructed in the next month in preparation for the arrival of 300 chickens in mid-May. Finally, the old farmhouse was unsalvageable and was replaced with a new farmhouse that matches the design of the barn and respects

the style and character of the house it replaced.

You may wonder why we took on such a project. Farms in New Hampshire are a hardscrabble business. Making money is tough. And yet I have always loved farms and farming, and there is a significant farming history in my family, as recently as my paternal grandfather. Growing up around the farm, listening to my great-grandfather (also Daniel Innis) talk about how he did things, and observing the business side of farming taught me a greater respect for what farmers do, and to understand how important they are to our economy. It is why Battles Farm is becoming Trail’s End Farm, the name of my great grandfather’s farm.

Our objective is to restore the farm and make it better than ever. An important part of our mission is, and will be, preserving New Hampshire’s farming heritage and introducing our farm to the community. Farms are a positive force in our communities and our goal is to further the understanding of farms and farming.


Trail’s End is a small effort to preserve and expand New Hampshire farming. It is a labor of love, and I am happy to be doing something to help stem the decline of farming in New England. Farms preserve open space, and the silos, barns, and homes are a part of our heritage, our history and the landscape around us. Small farms are a part of what makes New Hampshire so unique.

We’ve heard a lot lately about our difficulties in domestic oil production and the effect it has had on gas prices. The same thing will happen for groceries if we don’t support local farming. This weekend go visit a farm store and buy local. You can find them all over the state. I promise you that the products that you buy will be fresher and tastier than anything that can be found at the grocery store.


Daniel Innis, Ph.D. lives in Bradford and is a professor of Marketing and Hospitality Management at the University of New Hampshire. He is a former NH State Senator and an aspiring farmer.

Daniel E Innis
328 Center Rd.
Bradford, NH. 03221

UNDER CONTRACT



603
MOUNTAINS & LAKES
PROPERTIES
SALES PARTNERS AT COLDWELL BANKER LIFESTYLES



3 WALDRON HILL RD, WARNER


3 beds | 1 bath | 1.13 acres | \$349,000 | MLS# 4900655

READY TO SELL?
CALL US TO GET STARTED!

DEBBIE ROWE WALKER
(603) 748-9147

LALENA MATHENY
(603) 724-0636





COLDWELL BANKER | LIFESTYLES

Each Office is Independently Owned and Operated. Office: (603)826-4020

MONTHLY BRIEFING: Town Board Reports

(Continued from page 1)

and installation of laptop computers for the cruisers. This 100% grant has been approved. The Board approved a motion to grant Chief Shaughnessy the authority to sign the Certificate of Authority for this grant. The other grant is a 50/50 grant for Body One cameras which will soon be mandated. The total cost of the cameras is about \$24,000 and they will cover half the cost.

Police Detail Rate The Board approved a motion to change the detail rate of pay for vested officers from \$43/hour to \$45.54/hour.

Transfer Station The Board approved a motion to change the transfer station's timber cut agreement to include cutting an extra 12 acres in addition to the 3 acres that will be clear cut.

Building Inspection When the Building Inspector position was eliminated by the Town in 2020, letters were sent to DES and Eversource stating that it was no longer required to have the Building Inspector approve septic and electrical inspections. The current Building Inspector would like to revert to the earlier process for electrical work and require a Town inspection prior to Eversource conducting a final inspection. By consensus, the Board agreed that Town Administrator Karen Hambleton will reach out to Eversource with this change.

Committees The Board revisited their committee assignments. Selectwomen Beth Downs will serve on Budget Committee, Highway Department, and transfer station. Selectwomen Mel Pfeifle will serve on Economic Development, CIP, Planning Board, and Police Department. Selectwomen Marlene Freyler will serve on Historic District Commission, Energy Committee, and Fire Department.

ZONING BOARD OF ADJUSTMENT

Election of Officers The Board elected Brooks McCandlish as Chair and

Nathaniel Bruss as Vice Chair.

CONSERVATION COMMISSION

NH Butterfly Study Commission Member Ann Eldridge will be taking part in a NH butterfly monitoring project for conservation research this summer. Hessel's Hairstreak and Bog Elfin are two rare species that might be found at the Bradford Bog.

Hoyt Brook Volunteers NH Fish and Game is looking for volunteer monitors for Hoyt Brook to perform studies several times per year for ongoing data collection. Any equipment needed will be supplied.

Beaver Deceivers The Forest Street unit is not deceiving anyone, and appears to not be functioning. The Board discussed the worthiness of remedying. The West Road Deceiver is performing splendidly! Meanwhile, the beaver situation on Fairgrounds Rd needs attention. The BCC will consult with Bradford Road Agent Steve Hall about possible solutions.

LIBRARY TRUSTEES

Election of Officers The Board elected Devin Pendleton as Chair, Jason Grey

as Treasurer, and Caitlin Banaszak as Secretary.

Wages The Board approved a motion to apply a 5.8% COLA wage increase to all active Library employees. These funds had already been approved for the 2022 budget.

Conference Library Director Ellen Barselle and Trustees Beth VonBeren and Devin Pendleton will attend the NH Library Trustee Association Spring Conference in May.

PARKS AND REC

Equipment The Board approved a motion to spend up to \$300 for the purchase of basketballs, other sports equipment, and equipment storage for Brown Shattuck.

Swim Lessons The YMCA will be conducting swim lessons at French's Park July 5- July 18.

Summer Programs Parks and Rec is working with Wolverine Tactical on a 2 day wilderness survival course. Tentative dates are June 11 and June 18. The Board is also working on a Soapbox Derby event.

View Bradford Town Committee Meetings

Many Town Committee and Board meetings can be viewed in real time or later. To reach Town Hall Streams, the website that transmits and saves meetings, click on "Streaming Video of Certain Meetings" at bradfordnh.org. This lands on a page that shows upcoming meetings and has a searchable archive of past meetings.



KRSD SCHOOL BOARD

Legislation The Board approved a motion to oppose NH House Bill 1393, an act relative to the adoption of school district budget caps.

Fresh Picks Café The Board approved a motion approving the contract with Fresh Picks for \$615,698. This contract will be the first year with 4 additional one year agreements contingent on Board approval. Fresh Picks was the only bidder.

Windows The Board approved a sole source purchase recommendation for Granite State Glass in the amount of \$23,520 for window replacement at Sutton Central.

Neil Flanagan Promoted to Sergeant



On April 10, 2022 Master Patrolman Neil Flanagan was promoted to the Rank of Sergeant for the Bradford Police Department. Shown here is Sergeant Flanagan being sworn in at the April 11, 2022 Selectboard meeting. Neil graduated from Salve Regina College with a degree in Criminal Justice and, after many years in the sales business, he decided that he wanted to pursue his dream of being a police officer. Eight years to the day after he graduated from the police academy, Neil Flanagan was promoted to Sergeant.

Cindy Snay, Owner\Pharmacist

11 East Main Street
Warner, New Hampshire
603.456.3556
Mon.-Fri. 9am-6pm & Sat. 9am-1pm

S M LAQUIRE
CONSTRUCTION, CORP.

NEW CONSTRUCTION - REMODELING - ROOFING
FRAME TO FINISH - FIND US ON FACEBOOK

603 - 724 - 1211



Henniker Veterinary Hospital

Small Animal & Equine Practice

Alyssa J. Brust, DVM
Robert A. Brust, DVM
Amy C. Jones, DVM
Brittany Y. Paquette, DVM
Olivia J. Lattanzi, DVM

House Calls Available
428-3441
Maple Street, Henniker

G&A AUTO Complete Automotive Repair

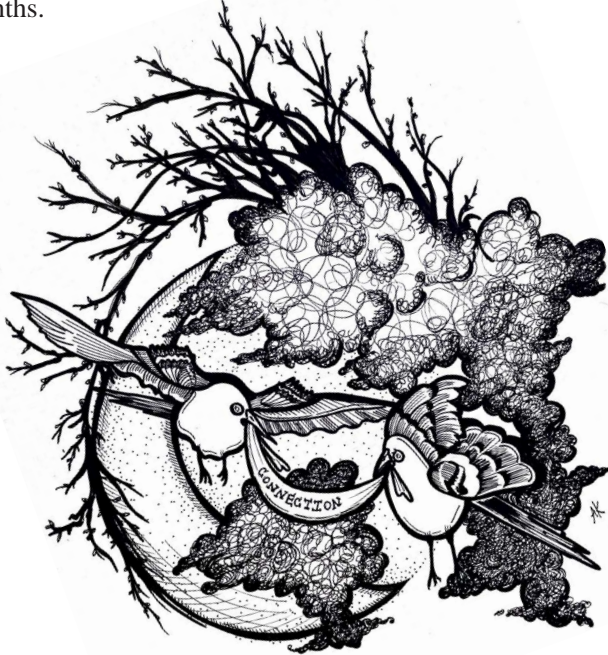
- ✓ Vets receive 10% off
- ✓ Alignments 1/2 price with the purchase of 4 tires
- ✓ State Inspections
- ✓ Free battery & coolant check with oil change
- ✓ Computer Diagnostics
- ✓ Factory Scheduled Maintenance

603-938-5545

G&A Automotive LLC 454 North Road, Sutton, NH 03273 G.automotivellc@gmail.com

The Bradford Energy Committee

The Bradford Energy Committee is planning a campaign to raise awareness and help our community use less plastic. We have joined forces with Ten Towns • Ten Actions, a NH organization with comprehensive policy, engagement, and infrastructure resources. Stay tuned for more information and events in the coming months.



9 REASONS TO REFUSE SINGLE-USE PLASTIC

- 

1 Made from fossil fuels
- 

2 Huge carbon footprint
- 

3 Will still be here in hundreds of years
- 

4 Only a tiny percentage is recycled
- 

5 Leaches toxins into food & drink
- 

6 Causes hormone disruption & cancers
- 

7 Pollutes our oceans
- 

8 Kills marine animals and birds
- 

9 Enters our food chain

LESS PLASTIC.

WWW.LESSPLASTIC.CO.UK
10towns.org/home/overview-statement



BUYING OR SELLING A HOME? Call Devin!

**DEVIN
PENDLETON**
C. 603.715.6809
O. 603.569.HOME
DEVINPENDLETON@KW.COM

DH
DORE HOLLAND
HOME GROUP
kw COASTAL AND
LAKES & MOUNTAINS
KELLERWILLIAMS REALTY

-OUTSIDE-

Mosses – Constantly Starting Over



A couple of weeks ago, a preacher friend of mine came looking for Easter sermon inspiration among mosses. Together we crouched on damp spring ground passing a 10X loupe back and forth. The jungle of mosses cloaking a rotting log was a welcome burst of green after a steady cold, black and white winter. Mosses couldn't provide the resurrection/rebirth metaphor she sought in part because spring isn't a renewal event for mosses.

This moss forest here, for example. All

winter it's been hunkered in the lee of a stone retaining wall, often snow covered. Leaning out towards the sun, it resembles a stilted grove of pine as seen from a great height. It sits on inhospitable sand. This sand, this atmosphere, and this weather are not as inhospitable as the landscape of hundreds of millions of years ago when moss ancestors first made landfall though. Moss and other Bryophytes like liverworts and hornworts have retained much of the elegant simplicity they started with.

Gleaning nutrients from windblown dust, water, and photosynthesis, they don't need roots pumping nutrients from the ground like later plant forms – only maintaining rhizoids or 'holdfasts'. They also lack a vascular system. Only a cell thick in any direction, they pass food and water cell to cell like an old-time firefighter's bucket brigade. This system can't support great height but that suits mosses fine. They keep a low profile in the still, warmer, damp air close to whatever surface they inhabit.

Now is primetime for moss viewing – when snow is gone and before leafout and bugout. Moss rugs the stonewalls and ledges, tentatively scales the base of trees, comingles with lichens in arboreal crevices, and occupies any windswept location where grasses and leaves can't

smother them. Your roof, for instance. In some species, chlorophyll is especially designed for lowlight conditions.

Water is the defining element of their Spartan lives. Water both complicates and facilitates the machinations of procreation in their two-step regeneration process. It would take a thick volume (and someone else) to explain solutions that involve the manufacture of surfactants to break water tension and the engineering of microscopic water cannons. They send their spore cases up in the relative aloft to catch the breezes. If all else fails, most can send off bits of themselves to reestablish elsewhere.

One reason this pine tree moss crouches beneath the wall is that there is moisture seeping down from the garden above. In order to properly put a name to this moss - I think it's a *Polytrichum commune* or 'common haircap' – I carried a stem a sunny distance of about fifty feet. Starting as a pine tree, it resembled a dry paintbrush when I arrived at the moss identification book in the kitchen. After putting the fragment in a dish of water, within seconds it rapidly spread its leaves. No time-lapse photography required.

Instantly shutting down is what moss can do when desiccating frost overcomes their chemical antifreeze and when the constant mini-droughts of summer arrive. Such dramatic drying would be fatal to other plants. Such a shut down of metabolism is what we would call 'death'. For moss, it's an interruption. The art of waiting patiently. And they can wait for water and the resumption of life for years, decades, or even hundreds of years.

Such suspension of activity and instant rehabilitation is where resurrection happens with moss and it happens over and over again. This renewal, this ability to constantly start over, is an attractive notion.

Ann Eldridge

Appleseed
EST. 1977
RESTAURANT
AND CATERING

We're excited for spring and summer!
The deck will be opening soon —
We're getting ready for a great summer at Sunapee Cruises

Wishing you a great summer season from the Fenton Family & the staff at Appleseed

Our Breakfast Buffet is a great way to start your Sunday! 8:30 – 11:00am
Serving Dinner Tuesday-Sunday 4:30 – 8:00pm
Menu at appleseedrestaurant.com and Facebook. Call 603-938-2100. Driveway pickup available

Sunapee Lake Massage

Quality,
Caring,
Professional.

Book Online or Call: www.SunapeeLakeMassage.com 603-763-6163

I just let the weight of it all pile up
 Like...of all of it
 All the troubles
 All the heartache
 All the doomsday truths and tales
 All the suffering
 Real suffering - my own and others
 And it piles up like stones on my back
 Weighs me down like a soaking wet
 blanket
 Hanging on my every move
 Stifling my every breath
 Dragging me into overwhelm
 Into despair
 And there I dwell in darkness
 In isolation
 Trapped

When I remember to care for and love
 myself
 – By Asking for what I need
 Reconnecting to my spirit
 And Finding my own ground –

 My actions beyond me fall into place
 Resonate
 My system settles
 My capacity grows
 And I am resilient
 And sometimes even
 Joyful...

 Amidst it all
 Because of it all.

Hanna Flanders



Hanna writes and draws, and draws and writes inspiring creativity in herself and in many of those who know her. She's a mom of two young kids, a friend to many, and you may also know her from the great work she does at Kearsarge Food Hub. Make art, not war!

Until some big or small thing
 penetrates the veil
 Reminds me
 Returns me
 To my own heart
 and the wisdom within
 The discernment
 To acknowledge that
 To destroy myself in the pursuit of
 saving
 Defeats the purpose, prolongs the
 craving
 It is a fallacy
 To think I can save anyone but me
 And ironically

Marlene's Hair & Florist Shoppe

"Established in 1978, Marlene's Hair & Florist Shoppe is a flower shop and hairdresser in Bradford, New Hampshire. With over 40 years of serving our community, we value quality service and a friendly environment. Contact us for more information or visit us today!"

2478 Henniker Road, Bradford, NH 03221 – (603)938-2530

PIZZA
CHEF

Pizza, Subs & Salads^{and more!}

10am to 8pm
7 days a week

938-2600

Serving Bradford
Since 1993

Menu at: bradfordpizzachef.com – 107 EAST MAIN ST, BRADFORD

FUELS

Fuel Oils & Propane

FOR OVER 65 YEARS, SERVING THE HEATING NEEDS OF THE ONLY HENNIKER ON EARTH!

AYERANDGOSS.COM 603-428-3333

Henniker | Bradford



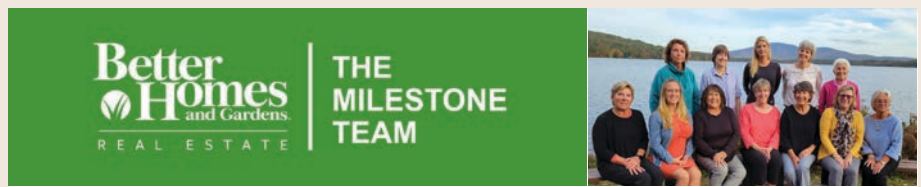
Join Us for a Celebration

Once again, treasures have been found among The Bradford Historical Society's collections. Several years ago, Pamela Weeks of the NH Humanities Council was our guest speaker. Pamela is a Quilt Historian, Curator of the New Hampshire Quilt Museum, and at that time coauthor of two books. Her book Civil War Quilts was the topic of her talk.

You may remember hearing about the return of the Bradford area's precious Civil War GAR quilt. We, of course, hung that treasure along with several others for her to see. Imagine our surprise when she saw that three of our quilts were constructed using an historical method that was the subject of the book she was currently writing! She came back to spend a day photographing and closely studying these quilts. BHS received a gift copy of the book Portable and were delighted to find her gracious thank you in the acknowledgments and four pages in the book full of photos and descriptions of what is called *The Bradford Quilts*.

Pam is returning to Bradford for another Humanities presentation on June 29th as we celebrate our excitement over learning more about the treasures we are so fortunate to have. All are invited to join us at 7:00 pm In the Tin Shop on East Main Street. There will be no charge and light refreshments will be served. Our quilts will be displayed and Pam will have copies of her book for those interested in purchasing one.

Mary E. Derry
Bradford Historical Society



Donna Forest
LISTING AGENT

Your slice of heaven awaits –

Enjoy coffee by the lake each morning, paddling and swimming in the afternoon, listening to the melodic call of loons, and savoring s'mores around the campfire at night. This Lake Todd waterfront cottage with dock is steps from the water and offers simplicity with modern touches (like fiber optic internet & Nest thermostat/security cameras). Enjoy the wonderful panoramic lake views out the HUGE window in the living room

while playing board games or snuggling up with a good book. Only 7 miles from Mt. Sunapee Ski Resort and close to conveniences like Dunkin Donuts, pizza, restaurants, etc. It's a special spot to refresh your mind and spirit! (Sellers have a vacation rental history thru VRBO and Airbnb and can transfer existing bookings or cancel them). \$599,000



If you're considering selling or buying, give us a call and put "The Best Team in Town" to work for you!

(603) 526-4116 • info@bhgmilestone.com • www.BHGMilestone.com
P.O. Box 67, 224 Main Street, New London, NH 03257

5 Acres
GARDEN CENTER & PET SUPPLY
(603)938-2497
Monday-Friday 9-6, Saturday 9-5, Sunday 9-3
2600 State Route 103 Bradford, NH 03221
5acresnh@gmail.com
5acresnh.com

Go Lightly Consignment
Current, Vintage & Antique Treasures
Women's Men's
Open Wed-Sun 10am-4pm
255 Newport Rd. New London, NH
Check out our new Bradford location!
1 Center Road
Open Friday - Sunday 10am-4pm
golightlyconsignment.com

Library Lantern

Brown Memorial Library

brownmemoriallibrary.org

78 West Main Street

(603) 938-5562

bmlbradford@gmail.com

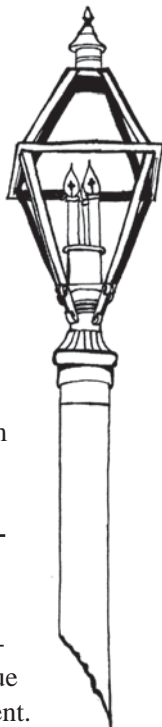
Library Hours:

Monday 10:00am – 6:00pm

Wednesday 11:00am – 7:00pm

Friday 10:00am – 6:00pm

Saturday 9:00am – 1:00pm



for connecting with the KRES Bradford fourth grade class to help fill all the easter eggs.

For the past month we have had a giving tree up to help the people of Ukraine. Shannon Foley, local community member, came up with the idea to set up the giving tree at both our library and at the town hall in Newbury. She has organized these donations in association with the Slavic Baptist Church Youth Center in Londonderry, NH. We thank Shannon for her efforts to bring Ukrainian refugees tangible items such as first aid kits, sleeping bags, blankets, medical supplies, and clothing.

I am looking forward to bringing programs back after their absence over the past two years. Patrons have indicated they are ready to see more going on at the library, and I agree. The summer reading program will be offered through the month of July. I will be posting on Facebook, our website, and the Bridge once the programs are in place.

May at the library:

Storytime: Every Monday at 10:00am. Stories with Maria and snacks afterwards. New families are welcome.

Book Group: Wednesday, May 25th at 7:00pm. We are reading *Memory of Sherman* / Ron McLarty. Copies available.

Memorial Day Plant, Book and Bake Sale. Saturday, May 28th from 9:00am-1:00pm.

*Ellen Barselle,
Library Director*

There have been a few staff changes at the library this month. We had two staff members take a leave of absence due to major surgery and an accident. Connie and Laurie will be out convalescing until they feel strong enough to return. I miss having them here and wish them fast healing. Patty Furness is our most recent hire. She has been involved in the library for many years as a patron and trustee. Welcome, Patty. We also welcome our newest trustee, Beth Von Beren. Beth is an avid reader and is an active member of the Bradford community.

The Easter Egg hunt was a big success! We had over a hundred people attend and the atmosphere at the library was festive and cheery. I felt a little out of practice organizing the big group, only minorly hacking the raffle, but overall, it was so nice having our community together again. I thank the FRIENDS of BML for organizing the program and



Perennials Need Dividing?
Extra Seedlings?

Got Plants?

Please consider donating
to the Annual

Brown Memorial Library PLANT & BOOK SALE!

If you need pots, containers, or help digging & dividing please contact BML for assistance 938-5562

Saturday May 28 9am-2pm

– 78 W. Main St. Bradford –
Proceeds from this event help fund Library improvements & activities

Thank You!



BRADFORD BEAR

New Hampshire Hard Cider

Now available:
Bradford Market
The New Harvester Market
Newbury Market
Warner Public Market

Restaurants:
Daniel's of Henniker
Full Belly Deli and Kitchen



www.bradfordbear.com **Produced and packaged in Bradford, NH 03221. Drink Responsibly.**

10 Questions: Bradford Bridge Business Profile – Go Lightly Consignment

It's a Saturday and I'm headed downtown to make the rounds. There's some stuff on the lawn by the Hallahan building that I've been meaning to check out, so I swing in and toss some questions at Holly.

1 Name and location of Business?

Go Lightly Consignment, Holly Salera-Fitzgerald, Owner, Bradford NH

2 What do you do? And how do you do it?

We are a resale boutique. We resell current, antique and vintage household treasures and all styles of clothing. We have a store in New London and opened another store in Bradford this past November. We consign items and clothing by appointment. We sift through your stuff and decide what we can sell. We set up a Go Lightly account for all of our consignors so every time one of their items sells, their percentage shows up right away. They can either use it as store credit or get paid! We know what the local market will bear so we set the prices where we know we can keep things moving.

We're not looking to have a museum here. So, we operate in a way that you'll see something different every time you come to see us. Offering a consignment model puts us in a really unique place – we get to connect with our community not just as customers, but as partners too. It's different from a thrift store that runs on donations and often turns profits over to a charity. We operate with our consignor agreements and make sales based on value – so the business pays out to the consignors and to us so we can all make a little bit of a living.

3 When did you start the business?

Go Lightly started as a small clothing consignment boutique and now we have over 5,000 consignors. I worked with the original owner at the beginning and

then took over the business in 2017. There has been a lot of growth since then.

4 Why did you get into the business?

It's a sustainable business practice! We offer people an opportunity to buy and sell goods at less than retail value. So, it "feels good" in the sense that it helps not just us but the community too. And it reduces waste! There is no denying



Holly Salera-Fitzgerald, owner of Go Lightly Consignment

the amount of stuff that gets tossed into a recycling bin or sent to a landfill. So, here's a chance for these items to land somewhere else.

5 What is your background?

Horticulture (she's laughs) – but here I am! I attended the Thompson school at UNH so that's my educational experience. My work experience has always been in retail. I worked in retail since I was about sixteen – Colonial Pharmacy was probably the best job I ever had. I really learned lots of life skills there.

6 What is your favorite part of being a business owner?

You are the only one responsible for your success! So that keeps me motivated. And I get to be creative.

7 Who helps you run the business?

Women! We are a women-run business. Our staff is incredible. Every single person on our team is talented and experienced in design, fashion, and retail. The team includes my childhood friend of 30 years, the original owner, a top consignor turned employee, a team of part-timers (even pulling night time hours behind the scenes) and a group of delightful high school girls getting their first experience with the public. Without this team of women we would not be able to offer the experience we do at Go Lightly.

8 Who are your customers?

We have customers from all over – people from Burlington, Nashua and summer vacationers, but really, it's the locals that support us most of all. That's honestly how we survive. We do put some hi-brow items on an online platform if it's not being picked up locally. But the boutique experience is what draws in a lot of customers and purchases. We put a lot of care into our displays so you can be inspired by how something may fit into your own home. Kind of like browsing through a magazine.

9 What is your most popular service/product?

Clothing.

10 What are your plans for the future?

Growth. More square footage in Bradford. I have such a deep connection to Bradford. There's nowhere else I'd rather be. I grew up here and I live here now. I remember when Bradford was a home to many robust businesses and you'd see your neighbors out and about all the time – that's community. We've been making a strong and steady comeback and I'm totally dedicated to do what I can to keep that going.

Thank you Holly for taking the time to share this information with us. If you want to check out the treasures too, Go Lightly's Bradford location is open Friday through Sunday 10am-4pm. Totally worth a stop!

Leah Cummings

TRANSFER STATION NEWS

Aluminum Beverage Cans

In 2021 The Bradford Transfer Station and Recycling Center collected and recycled 8,182 net pounds of aluminum beverage cans and netted \$4,311.78. A Nation-wide shortage of aluminum cans has sent brewers into a frenzy. During the COVID-19 pandemic more people bought beer at liquor or grocery stores in bulk, resulting in aluminum beverage cans residing in homes, being thoughtlessly discarded into waste, and/or being thoughtfully recycled into the processing of new beverage cans. Thus, many breweries are dealing with a shortage of aluminum beverage cans for filling. Industry insiders predict the shortage will top 10 billion cans in the United States this year. Residents are asked to deposit all of their empty, highly-needed, and recyclable aluminum beverage cans into the baler designated and labeled “Aluminum Cans”. Bradford residents can help the economy nationally and locally! By the time this article is published, The Bradford Transfer and Recycling Center will have delivered 12 bales of cans that we have been storing since January to Schnitzers Northeast in Concord.

Lois Kilnapp, Manager

BRADFORD RECYCLES

Cardboard + Mixed Paper, aka anything that rips + Aluminum Beverage Cans + Plastic #2 + Clean Glass and Ceramics + Steel Cans + Aerosol Cans + Lids + Beer Caps + Aluminum Foil + Any and All Scrap Metal + Any type of battery + Cell Phones + Ink Cartridges + Motor Oil + Any liquid plant-based oil + Oil filters + Demolition + Brush + Books + Clothing + Textiles

RECYCLE!?
YES, YOU CAN!



The Fenton Family and Police Departments Deliver Easter Dinners



On Saturday, April 16th surrounding Police Departments partnered with the Applesed Restaurant to deliver over 135 dinners to the elderly, those in need or those spending Easter at home. Meals consisted of ham, potatoes, vegetables, a roll and dessert. People often ask if the police department takes donations or is in need of anything. The answer is please make a small donation to the Applesed Restaurant and tell them to put it towards the meals for the next holiday.

The smiles on the faces of those accepting deliveries at their homes is very rewarding. When they ask why the Fenton Family does this time after time they simply tell them, “Because nice matters.”

Meals went out to Bradford, Newbury, Sunapee, Warner, Henniker, Hopkinton/Contoocook and New London.



Sweet Beet

Programs of the Kearsarge Food Hub

Greens galore!

Fresh greens are rolling in to the market from our local lands. Such a treat after a long winter!

Spinach, arugula, kale, tatsoi, salad mix, microgreens...oh my!

Sign up for our microgreens share here in the market for a fresh supply each week!

café market

Weds-Fri: 8am-2pm Weds-Fri: 10am-6pm
Sat-Sun: 8am-3pm Sat-Sun: 9am-5pm

11 West Main, Bradford | 603.938.5323
kearsargefoodhub.org/sweet-beet
 Online Store: sweetbeetmarket.com

The Book Stone Soup Brings Neighbors Together

Stone Soup is a European folk story about the nature of happiness and the value of sharing, especially with strangers.



Residents at Newbury Commons gathered for a Stone Soup theme luncheon Friday, April 8. Sponsored by the Kearsarge Community Network collaborating with area partners to increase the natural joys of sharing a meal and connecting with our neighbors. Individuals living at Newbury Common expressed it had been two years since their community room had been open due to the pandemic.

At the luncheon the classic folk story

was read, while seniors were enjoying a delicious homemade soup, bread and dessert. The food was prepared by the Kearsarge Regional High School, Ms. April's culinary classes and served by volunteers from Kearsarge Neighborhood Partners (KNP).

The room was filled with lively conversations, creating a joyous atmosphere. The senior's felt empowered and expressed their desire to start gathering again in their community room. They want to start up monthly potluck dinners, weekly exercise classes and to schedule VNA health screenings, music, arts and crafts programs.

Another Stone Soup luncheon occurred on April 22 at Wilmot Community, where neighbors connected rekindling friendships with each other, and events which had not occurred due to the pandemic.

One more Stone Soup luncheon will be on May 13th at Bradford Area Community Center. Please call 938-2104 or rhiixon@capbm.org to reserve a spot. The luncheons are open to all.

On April 20th, the Pillsbury Free library in Warner provided an arts and craft program for children. This program included a book reading and discussion on the valuable lessons learned by villagers. Then the young participants also measured and

prepared a dry soup base in jars to bring home to share the Stone Soup story and make the soup with their family. In addition, they all made one extra jar for Warner Connects food pantry. This program is ready to be duplicated in other towns if you're interested please reach out to KCN

The Kearsarge Community Network is part of the UNH Extension Building Community Resilience Project. As communities we have all experienced disruption and disconnections due to the pandemic. The KCN is cultivating collaborative activities which are being planned this spring and summer. Come join us at our Kearsarge Community Network Zoom meetings held the 3rd Wednesday each month from 10-11:30 am. The next meeting is May 15th. KCN wants to collaborate with area organizations, civic groups, businesses, towns, and schools.

KCN can provide resources for your upcoming events or we can create resiliency programs together that reunite with our neighbors, build connections and celebrate our resilience as we emerge from the pandemic.

For more information please contact the KCN Coordinator Carol at 938-2562 or confortiadams@gmail.com



Kearsarge Community Network

Building a Network to Cultivate
Community Collaboration

High school students!

Are you looking for a rewarding community service experience where YOU can learn new skills and give back to your community?

KCN is working with many local nonprofit organizations, civic groups, and food security projects in the Kearsarge region.

KCN's role is to connect students with meaningful volunteer opportunities!

Please contact KCN Coordinator Carol at 603-938-2562 or

confortiadams@gmail.com

Obituaries

James F Hansen

James F Hansen, age 90, passed on Sunday, January 22, 2022. Graveside memorial service to be held Saturday, May 14, 2022 at 11am at Sunny Plain Cemetery, with fellowship to follow at the Appleseed Restaurant.

Eunice R. Lowe

Eunice Rosemond Lowe of Manahawkin, NJ died December 10, 2021, peacefully at home after a brave battle with cancer. She was 82. Born in New Brunswick, NJ September 7, 1939, she was the daughter of the late Rev. Samuel Lowe, former pastor of the Bradford Baptist Church and his wife Grace Hoger Lowe. She spent her formative years in Bradford raised as one of the “preacher’s kids”. The middle of five children, she fondly remembered Bradford as her hometown.

Before moving to Beach Haven, NJ, she raised her family in Allentown, PA and was involved in the Salisbury Township community and schools. She taught dancing and piano to children as well.

From 1977-1985 she was owner/operator of Fisher’s Diner in Beach Haven. Though the work was arduous her style engendered laughter and banter among several generations of customers as well as great diner food. After the diner was sold, she worked for Southern Food Service as a Food Service Director. Her assignments included FEMA Training Center in Emmitsburg Md and the FBI Headquarters in Washington, DC.

She will be dearly missed by her family and friends. She is survived by her siblings, Samuel Lowe and his wife Ratri, Lois Lowe, Rose Barnett, and her husband Paul, children, Kathleen McLaughlin and husband Robert McLaughlin, Lisa Fisher, George Fisher,

Jr., John Fisher and wife Patricia, and grandchildren: Ryan McLaughlin Lee & husband Ben, Matthew Kenney & fiancée Jannah, Robert McLaughlin & wife Alanna, Trevor Kenney, George Fisher III, Leigh Fisher, and Justin Fisher.

A memorial service was held on January 2, 2022, at The Pearl Street Pavilion in Beach Haven followed by a repass at the Beach Haven Fire Department. Memorial donations may be made in her name to Memorial Sloan Kettering Cancer Center, or Popcorn Park Animal Refuge, 1 Humane Way, Forked River, NJ 08731 <https://www.maxwellfuneralhome.com/obituaries/eunice-lowe>

Death Is Nothing At All by Henry Scott-Holland

Death is nothing at all.

It does not count.

*I have only slipped away into the
next room.*

Nothing has happened.

*Everything remains exactly as it
was.*

I am I, and you are you,

*and the old life that we lived so
fondly together is untouched, un-
changed.*

*Whatever we were to each other,
that we are still.*

Call me by the old familiar name.

*Speak of me in the easy way which
you always used.*

Put no difference into your tone.

*Wear no forced air of solemnity or
sorrow.*

*Laugh as we always laughed at the
little jokes that we enjoyed together.*

*Play, smile, think of me, pray for
me.*

*Let my name be ever the household
word that it always was.*

*Let it be spoken without an effort,
without the ghost of a shadow upon
it.*

Life means all that it ever meant.

It is the same as it ever was.

*There is absolute and unbroken
continuity.*

*What is this death but a negligible
accident?*

*Why should I be out of mind be-
cause I am out of sight?*

*I am but waiting for you, for an
interval,*

somewhere very near;

just round the corner.

All is well.

Nothing is hurt; nothing is lost.

*One brief moment and all will be as
it was before.*

*How we shall laugh at the trouble of
parting when we meet again!*



Protecting the Merrimack River Watershed



Protecting drinking water begins at the source. Planting native trees and shrubs along shorelines can improve bank stability, dissipate flood waters, trap excess nutrients, and in turn, result in cleaner water for millions downstream. On Earth Day I joined the crew pictured here to plant some native trees along the bank of Hoyt Brook on Old Mountain Road in Bradford. Funded by the federal government the Merrimack River Watershed Council is organizing restoration projects throughout the Merrimack River Watershed, and planting trees tops the list. Interested in getting your hands dirty to improve the health of our local watershed? Plantings similar to the one in Bradford will be taking place during the coming months. Follow this link for all the info: merrimack.org/events

Kathleen Bigford

Flower Gardens for Bradford!

If you look forward to getting back into your garden as May begins the start of the new growing season, you might consider volunteering some of your gardening time this year with the Bradford Community Gardeners. We are planning now for the gardens we have created and maintain around our downtown. Daffodils and iris are already up at the two triangle gardens at the intersection of 103/114, and around the benches on the Rail Trail at Lake Todd. Perennials are up and will be blooming soon at the Historical Society, Lafayette Memorial, and the Tall Pines parking area on 103. Later in the month we will fill planters at the Community Center, the Little Library, and the Rail Trail, and plant annuals to fill out the perennial gardens at each of the above locations for another summer of bountiful color to be enjoyed by all. We have also just added the historic Bradford Center Meetinghouse to our list to maintain existing gardens there too.

The Bradford Community Gardeners are simply a group of Bradford residents who love flower gardening. We are not an official Garden Club, and there are no dues. Between the generosity of our fellow town residents and local businesses, we have had a bounty to plant each year. We welcome new volunteers regardless of gardening experience - It's a great way to learn! If you are interested in helping with planting, weeding, and watering this year, please speak to Lois Kilnapp at the transfer station or email Susan Moss at srmoss1@comcast.net

We also welcome donations of perennials or annuals that you may be starting at home, and they can be dropped off with Lois starting in mid-May. Thank you!



"We're the life of the potty"

Ron's Johns Chemical Toilets **Steve & Jessica Hurd**

Call us today to reserve your portable toilet or hand wash station rental! Camper pumping also available!
Newbury, NH * 603-542-3865

Public Notice

Lake Todd Village District 2022 Annual Budget Hearing

In accordance with RSA 32:5.I, notice is hereby given that The Commissioners of Lake Todd Village District in the Towns of Bradford and Newbury, NH, will hold a hearing on a proposed budget for the District.

Date: Saturday, May 28, 2022 **Time:** 9:00am

Where: Bradford Area Community Center
134 East Main Street, Bradford, NH

All persons, residents and non-residents of the Lake Todd Village District are invited and encouraged to attend.

YOU ARE INVITED



WHAT: A BRAINSTORMING SESSION!

WHEN: THURSDAY, MAY 26, 2022, AT 1:00PM

WHERE: THE GARDEN ON EAST MAIN ST. (149 E. MAIN ST.)

WHY: TO BRAINSTORM AND SHARE IDEAS FOR A NATURAL, OUTDOOR
CHILDREN'S PLAY SPACE INSTALLATION AT THE E. MAIN ST. GARDEN

...REFRESHMENTS TO BE PROVIDED



evergreen
HEALING ARTS
www.evergreenhealingarts.org

Family Yoga
in-studio with Liz
SATURDAYS FROM 9:35-10:35AM

Massage Therapy
by appointment with Leah
MONDAYS AND THURSDAYS

evergreenhealingarts.org

 11 West Main St, Bradford, NH 03221 603-748-4330
 603eha@gmail.com



BRADFORD MEETINGHOUSE
34 Rowe Mountain Road, Bradford, NH 03221

Summer Music Series in Bradford

Are you ready to rock n roll? The summer of 2022 promises to bring a welcome return of public gatherings in town. The Friends of the Bradford Center Meetinghouse have planned a line up to suit everyone's musical taste. We hope to see you there.

July 9 at 7 pm, Classical music on piano and flute with Will Ogmundson and Nicole Densmore

July 22 at 6 pm, Rock n Roll with Nick's Other Band

Aug 7 at 2 pm, Patriotic and show tunes with Kearsarge Community Band/Ice Cream Social

Aug 27 at 4 pm, Americana Bluegrass with Bow Junction

We have been actively seeking sponsors to support these concerts so that proceeds can be applied to maintenance of the buildings.

We are pleased to announce the following participants to date:

\$1000+ BELL RINGER –
Go Lightly Consignment,
Lettvin Concert Series

\$500 STEEPLE CLIMBER –
Twigs Firewood,
Dan Innis & Spencer Wyand Farm

\$250 PULPIT PATRON –
Naughton Recycling, Colby Insurance,
Bar Harbor Bank & Trust

\$100 DOOR USHER –
Evergreen Healing Arts, Homegrain
Creations, Warner Pharmacy

*Sponsor deadline is May 20th, 2022.
All events will occur Rain or Shine.*

These organizations have earned our undying appreciation as well as advertising in all of our outreach this season. We have also received generous personal donations from local individuals to support our window restoration project.

ARE YOU INSPIRED TO OFFER SOME HELP?

We still need considerable financial support and can always use willing volunteers at our events. Please join the Friends by contacting *lbuchar@gmail.com* or check out our website *bradfordcenter.org* for ways to donate. Most of all, be sure to mark your calendars and come out to savor the sounds of Bradford Center this summer.

Friends of Bradford Center Meetinghouse



ROCK MAPLE NURSERY
Perennials, Annuals, Bark Mulch
CHARLIE SPAULDING 938-5955
2230 Route 114, Bradford, NH 03221



Laura Hallahan
REALTOR
Principal Broker
GRI, CBR, SRS, RENE
2010 NH STATE REALTOR of the Year
603-848-2020
laura@ljhsells.com ljhsells.com



NAUGHTON & SON RECYCLING, LLC.
RESIDENTIAL COMMERCIAL CONSTRUCTION RECYCLING SERVICES
603-938-2282
naughtonrecycling.com
ROLL-OFFS: 15 TO 40 YARDS
CONTAINERS 2 TO 10 YARD



NRC
Naughton Recycling Center, LLC
603-938-5234
naughtonrecycling.com
Transfer Station Recycling Services
Jones Road • Bradford



Family Closet
a Thrift Boutique
Seasonal Clothing and Accessories
for Men, Women & Children of all ages
Open Wednesdays & Saturdays 10:00am-4:00pm
603-456-2053 49 W. Main St. Warner, NH
Supports Warner Connects NH Food Pantry and Resource Center

BRADFORD COMMUNITY EVENTS

Sunday, May 1

10:30 am Silver Hill Farmschool Spring Celebration, BCMH

Monday, May 2

8:45 am Strong Living Exercise
10:00 am Storytime, BML
1:00 pm Bridge Group
3:30 pm Driver's Ed School, LR

Tuesday, May 3

10:00 am Quilting Group
12:30 pm Mahjong Group, LR
3:30 pm Driver's Ed School, LR

Wednesday, May 4

3:30 pm Driver's Ed School, LR
4:00 pm Girl Scouts
7:00 pm Zoning Board

Friday, May 6

8:45 am Strong Living Exercise

Saturday, May 7

9:30 am Historical Society

Monday, May 9

8:45 am Strong Living Exercise
10:00 am Storytime, BML
1:00 pm Bridge Group
3:30 pm Driver's Ed School, LR
6:00 pm Selectmen's Meeting

Tuesday, May 10

10:00 am Quilting Group
12:30 pm Mahjong Group, LR
3:30 pm Driver's Ed School, LR
7:00 pm Planning Board Meeting

Wednesday, May 11

3:30 pm Driver's Ed School, LR
4:00 pm Girl Scouts

Thursday, May 12

5:30 pm Parks & Rec

Friday, May 13

8:45 am Strong Living Exercise
12:00 pm Stone Soup Luncheon, BACC

Monday, May 16

8:45 am Strong Living Exercise
10:00 am Storytime, BML
1:00 pm Bridge Group
6:00 pm Eco/Dev Committee

Tuesday, May 17

10:00 am Quilting Group
12:30 pm Mahjong Group, LR
5:00 pm Energy Committee
5:30 pm State Representatives
7:00 pm Conservation Committee, BML

Wednesday, May 18

4:00 pm Girl Scouts

Friday, May 20

8:45 am Strong Living Exercise

Monday, May 23

8:45 am Strong Living Exercise
10:00 am Storytime, BML
1:00 pm Bridge Group
3:30 pm Driver's Ed School, LR
6:00 pm Selectman's Meeting

Tuesday, May 24

10:00 am Quilting Group
12:30 pm Mahjong Group, LR
3:30 pm Driver's Ed School, LR
7:00 pm Planning Board Meeting

Wednesday, May 25

9:00 am Wellness/Foot Care
3:30 pm Driver's Ed School, LR
4:00 pm Girl Scouts
7:00 pm Book Group, "Memory of Sherman" by Ron McLarty. Copies available, BML

Friday, May 27

8:45 am Strong Living Exercise

Saturday, May 28

8:30 am Lake Todd Village District
9:00 am Book and Plant Sale, BML

Monday, May 30

Memorial Day

Tuesday, May 31

10:00 am Quilting Group
12:30 pm Mahjong Group, LR
3:30 pm Driver's Ed School, LR

All events take place at the Bradford Area Community Center (938-6228) or the Mountain View Senior Center (938-2104) unless otherwise noted. Call to confirm dates and times in case any changes have been made.

Calendar Abbreviations

BACC	Bradford Area Community Center
BCC	Bradford Community Church
BCMh	Bradford Center Meetinghouse
BHS	Bradford Historical Society
BML	Brown Memorial Library
FGC	Fish & Game Club
KLC	Kearsarge Learning Center
LSVNA	Lake Sunapee Visting Nurses Assoc.
LR	Learning Room
MVSC	Mountain View Senior Center
SR	Senior Room
YR	Youth Room
ZBA	Zoning Board of Adjustment



SUPPORT
SMALL
Business



Home Mortgages • Construction Loans
Home Equity Loans • Refinancing
FULL SERVICE BANKING
800.562.3145 | sugarriverbank.com
Bradford ATM -only | Warner | Concord | New London
Sunapee | Newport | Grantham
Member FDIC - Equal Housing Lender

We may no longer be called Cobble Pond but our fabulous
Indian Food is still here! Take-out 7 Days a Week



BRADFORD MARKET

- Indian Spices & Indian Take-out Dishes
- Beer & Wine • Coffee • Sandwiches
- Snacks • Groceries • Sodas • Lottery Tickets
- Newspapers • Auto Supplies • Gifts • Toys • ATM



Monday-Saturday 6am-9pm **938-2662** Sunday 7am-9pm

Route 103, Bradford, NH – We are your hometown convenience store!



Bradford Community Church
A gateway to encounter God's love
 88 West Main Street, Bradford, NH

Our Sunday Services start at 10am. Communion Service is held on the First Sunday of the month.

Our next community meal is on May 20th at 5pm. Chicken and Rice. Free, open to the community to come together and get to know one another.

The Food Pantry will be open on May 18, 5:30-6:30pm. If you need help before that date, please call (603-938-5313) and leave a message and we will get back to you as soon as possible.



BRADFORD EVENTS

Sunday, May 1st, 10:30 am, Bradford Center Meeting House, A peaceful celebration and performance of spring with singing and dancing including the Silver Hill Farmschool Fiddlers, Drummers, and Singers. All are welcome.

Wednesday, May 25th, 7:00pm, The Bradford Historical Society will be hosting Bradford's new Fire Chief Bryan Nowell. This will be held at the Tin Shop on East Main Street and an invitation is extended to all to come and meet him.

WARNER EVENTS

Saturday, May 14th, 9:00-3:00pm, 2022 Spring into Warner will be held on Main Street in Warner (outdoors except for Museum visits). Artists and crafts-

people, dancers, musicians, and other performers all welcome. Season's opening of Warner Area Farmer's Market on Town Hall lawn, Used Book Aale, Museum Tours and Exhibits.

Saturday, May 21st at 1:00pm, Nature Discovery Center clean-up day. This museum needs a few people with brooms, dust rags, and dustpans for general clean up. Re-opening June 4th! Contact Sandra Martin 603-822-2334.

Saturday, May 7th, 1:00-4:00pm, Mt. Kearsarge Indian Museum, 3rd Annual Founder's Day in honor of 100th Anniversary of Bud Thompson's birth. Music, food, slideshow, raffles, museum and more. RSVP to deputydirector@indianmuseum.org.

HAVE AN EVENT YOU WANT TO SHARE WITH OUR COMMUNITY? SUBMIT HAPPENINGS TO BRADFORDBRIDGE345@GMAIL.COM

COLBY  **INSURANCE GROUP**



The search is over!

Save your valuable time and energy. We'll customize an insurance plan that will provide financial security and protect your lifestyle.

Put our expertise to work for you.

800-392-6532

The Gallery, 276 Newport Rd., Suite 211, New London, NH

colby-group.com



MEMORIAL-DAY-SAVINGS ALL MONTH-LONG



TIKI TORCH FUEL \$8.00^{EA.} LMT 3
 SKUs: 7266174, 8455966, 7266182

6OZ DEEP WOODS OFF \$7.00^{EA.}

16LB KINGSFORD CHARCOAL \$12.00^{EA.} LMT 4

20LB PROPANE REFILLS \$15.00^{EA.} LMT 2

IN-STOCK TIMBERTECH DECKING 16" DARK TEAK & MARITIME GRAY
 WAS \$57.75^{EA.}
NOW \$47.50^{EA.}

IN-STORE SPECIALS ALL MONTH LONG

LUMBERBARN.COM
603.938.5161 RT.114 HENNIKER RD BRADFORD NH
MON-FRI 7 TO 5 SAT. 7:30 TO 5 CLOSED SUNDAY
 WHILE SUPPLIES LAST - MUST BRING THIS AD AS COUPON DURING MAY 2022

CLIP N' SAVE

Out & About: Moss

“Mosses and other small beings issue an invitation to dwell for a time right at the limits of ordinary perception. All it requires of us is attentiveness. Look in a certain way and a whole new world can be revealed.” ~ Robin Wall Kimmerer

Read “Mosses – Constantly Starting Over” by Ann Eldridge on Page 11 to find out more about these plants that often go unnoticed.



Photo by Kathleen Bigford

Many of you are enthusiastic about recording the beauty that surrounds us. Therefore, I'd like to invite photographers to share images to be included in this article. An accompanying caption would be nice. Please submit the images in .jpg or .jpeg format.



The Bradford Bridge

**REACH MORE CUSTOMERS
ADVERTISE!**
IN THE
BRADFORD BRIDGE
YOUR LOCAL NON-PROFIT VOLUNTEER
Newspaper
→ REASONABLE RATES ←
\$8 PER COLUMN INCH
DISCOUNT 10%*
*PRE-PAID, ANNUAL BASIS
Call: 938-2230
See our complete rate card online at:
bradfordbridge.org
email: bradfordbridge345@gmail.com

CLASSIFIED

WANTED: We are looking for someone to do some light housekeeping at our house on West Road – maybe three or four hours a week. Please give me a call at 603-491-5985. We are very flexible as to hours. Thanks. Brackett Scheffy

Classified ads are free to individuals offering employment or personal items for sale that are under \$250. Text only. Businesses are not eligible. Deadline is the 20th of the month, email your ad to: bradfordbridge345@gmail.com

Hugo's Electric, Inc.

Licensed & Insured
RESIDENTIAL • COMMERCIAL
938-5573
3191 State Rte 114, Bradford



MainStreet BookEnds
Community Bookstore & Toy Store

Gallery with 30+ Local Artists
Since 1998

TUES. – FRI. NOON – 6 PM
SATURDAY 10 AM – 4 PM
mainstreetbookends.com
info@mainstreetbookends.com

16 East Main St., Warner 603-456-2700
100% Solar Powered



www.barharbor.bank • 888-853-7100
Member FDIC Equal Housing Lender

Bradford Branch
115 East Main Street
Bradford, NH 03221
603-843-6341

Arms full of children

Refugees flee their
homeland

Carrying its dreams.

segulla.org

