

THE BRADFORD BRIDGE

COMMUNITY NEWS BY NEIGHBORS FOR NEIGHBORS

Volume 18, Number 1 Issue 162

January 2005

Mandatory Recycling Pays!

When you drive into our facility, you see the welcome sign saying BRADFORD TRANSFER AND RECYCLING CENTER. This means that recycling is mandatory, not an option. We are committed to recycle everything that comes to the Transfer Recycling Center, because recycling pays!

Some residents have become embarrassed or aggravated when I or my assistant Lois insist that recycling be done, or when we pull recyclables out of the trash bags that are being put into the compactor.

On the other hand, many residents have set their minds to recycle their discards and have set up recycling centers at home, so that their trips to the Bradford Transfer and Recycling Center are easy and pleasant for everyone.

Thanks to these many residents who are now faithfully recycling, we have received an excellent report from Northeast Resource Recovery Association (NRRRA). Bradford is one of the many members from the state belonging to this NRRRA Co-op, which uses a "multi vendor" approach to marketing recyclables.

Recycling metals, paper, aluminum,

and other miscellaneous commodities through NRRRA from May, 2003 through August, 2004 earned the Town of Bradford \$5,559.98. If these recyclables had been put into the compactor, it would have cost Bradford \$9,232.15 at the present rate to send them to the incinerator in Penacook. In addition, recycling corrugated cardboard through Schwartz Paper earned Bradford about \$3,000 during that period.

The good residents of Bradford recycled 115.17 tons of mixed paper during the past year, which earned \$2,324 for the town. If these 115.17 tons of paper had been put into the compactor, it would have cost Bradford \$4,278.57 to dispose of it.

The good residents of Bradford recycled 3,780 pounds of aluminum during the past quarter, which earned \$1,790.20 for the town. If these 3,780 pounds had been put into the compactor, it would have cost Bradford \$70.21 to dispose of it.

As you can see, mandatory recycling really helps the Town of Bradford and all residents, and we encourage everyone to join in this profitable and successful endeavor!

Kenneth Anderson, manager

Local Artist Featured in Art Exhibit

Silk Farm Audubon Center exhibit, "Naturally Black and White," is on display January 4-February 23. This exhibit displays three interpretations of our environment that utilize black and white imagery. J. Ann Eldridge, of Bradford, a graduate of the Massachusetts College of Art, uses the intaglio process to craft delicate prints of gardens and nature. She is a juried member of the League of N.H. Craftspeople and the N.H. Art Association and has gallery connections throughout New England. She has illustrated several books.

Polish-born Gene Matras emigrated to New Hampshire with his family in 1960. His forest homestead and his travels throughout New England provide inspiration for many of his award-winning pen and ink drawings of woodlands, mountains, wildlife, and rural life. His works are available in limited edition signed prints.

The beauty of the New England landscape is captured in the black and white photography of Alistair McCallum, of Mt. Holly, Vermont. A graduate of Rochester Institute of Technology, he uses a medium-

continued on page 4

Plans Available at Town Hall

The Board of Selectmen would like to inform people that the plans for the proposed changes to Center Road and Cheney Hill Road are available in the main room of the Town Hall. The selectmen are considering the improving and paving of Cheney Hill Road and eventually closing that portion of Center Road between the two intersections with Cheney. It is hoped the town will develop the closed area of Center Road into a recreation area - i.e. walking park or picnic area. This work will require the issuance of a bond.

In addition, plans for the improvement of Drainage on West Main Street are also available at the Town Hall. Selectmen would like to encourage everyone to stop in and review the plan, as these issues will be on the March Ballot.

*Cheryl Behr, administrator
Town of Bradford*

INSIDE

BAAC Calendar	15
Bradford Country Squares	4
Bradford Historical Society	3
Bradford Senior Center	14
Bradford Women's Club	4
Business After Hours	7
Classifieds	16
Current Use	5
Letters	12
Meeting House Renovations	5
Outdoor Women	6
Outside	13
Parks & Recreation	2
Planning Board	11
Real Estate Hints	9
Rural Heritage Connection	11
Savvy Internaut	8
Selectmen's Meetings	10
Soo Nipi Audubon	4
Town Calendar	16

THE BRADFORD BRIDGE



P.O. Box 463

Bradford, NH 03221

Telephone: 603-938-2692

FAX: 603-938-2995

bradfordbridge@mcttelecom.com

VOLUNTEER STAFF:

Bev Leo and Beth Rodd, Co-editors

Carol Troy, Ad Manager

Jarna Perkins, Business Manager

Carey Rodd, Classified Ad Manager

Vern & Marion Hall, Subscriptions

John & Elinor Robie, Distribution

Gene Schmidt, Distribution

Milly Kittridge, Historian

Susie Janicki, Layout Support

Subscription Information

For those wishing to receive the *Bradford Bridge* by mail, the annual subscription price is \$12 to cover the cost of mailing. To subscribe, please send a check to the address above.

Advertising

The *Bradford Bridge* is a free community newspaper supported by advertisers. To place an ad, call Carol Troy at 938-6186 or send a FAX to 938-2995. Ad deadline is the 20th of the month.

Submissions

The *Bradford Bridge* is written by neighbors, for neighbors. Anyone is welcome to submit articles and/or photographs of interest to the community. The *Bridge* reserves the right to edit submissions for length or content. Send articles or letters to Beth Rodd/Bev Leo at the address, FAX number, or e-mail address above by the 20th of the month.

2004 Parks and Recreation Update

We would like to thank the town for approving the director's position at the town meeting last March. Jarna Perkins has been appointed as the new Director. Jarna has many of the responsibilities that volunteers have had in the past. She has been a great asset with her organizational skills and follow through of programs. Look for new programs for 2005.

At the town meeting, \$10,000 raised by P&R over the past years was set aside for the Building Fund. P&R's goal is to construct a town bandstand to accommodate future concerts, weddings, gatherings, or just a nice place to visit. We hope to start fundraising in 2005 for the bandstand.

The Bradford Batonnettes had three age group classes this year due to high enrollment. They performed in the Fourth of July Parade, taking another blue ribbon!

French's Park cleanup was held on May 22. Jim Allen was hired for park maintenance with the funds previously used for the park attendant. The park is in good shape, picnic tables are being replaced and an additional grill will be added. We'd like to thank Bliss Dayton and John Forgiel for putting in the swim line and Dave Currier for taking the line out. Many thanks to Joe Conway for his many years of doing this job. Thank you to Cliff Powell who helped Jim this summer, and to the anonymous daffodil planter.

We held our first annual roast beef dinner on July 2, on the BACC lawn. Over 100 people attended including our future governor, John Lynch. The street dance

was enjoyed by young and old.

There were 49 people attending the annual Fourth of July Red Cross Blood Drive. We revived the Cow Flop Bingo on the lawn of the bank. Winners were Graham Browne, \$350, and Doreen Carrafa, \$150.

The Red Cross Swimming Program was held the first two weeks of July at French's Park with over 60 registrants. Nicole Wallace was once again our instructor.

We again sponsored the Tall Pines Summer Program at the BACC this year. The program used French's Park for swimming and cookouts, Brown-Shattuck Field, and some of the P&R equipment.

In August, Will & Megan Hurley from Outspokin' led mountain bike trips through the area. The rides were for fun, but taught proper trail etiquette and bike safety. This program will continue in 2005.

Bradford Fun Day was a huge success. This was sponsored by P&R and the Kearsarge Area Preschool at Brown Shattuck Field for a day of family fun with hay rides, hay maze, games, food, music, live animals, saw mill demonstrations, archery, face painting, and much more. We hope to make this an annual event.

Our Halloween Party at the BACC was well attended. Ghosts, super heroes, and princesses were served food and beverages and played games. There were over 25 carved and painted pumpkins in the pumpkin contest. The Bradford Police Department judged, and the winners were: 1st place, Craig Hendrick; 2nd place, Marisa Pickman; 3rd place, Jenna Waite.

We look forward to another successful year in 2005. To make suggestions or share ideas for future events, or if you can donate some time to P&R, please give Jarna a call at 938-6228.

Jane Lucas
Jarna Perkins

We're NOT just another convenience store...

WE ARE A TRAVELER'S COMPANION:

WE ARE NOW SERVING INDIAN FOOD

LUNCH & DINNER TO GO WEDNESDAY THRU SATURDAY

Cobble Pond Farms

HAPPY NEW YEAR

Groceries • ATM • Beer & Wine • Lottery
• Gifts • Sodas • Snacks • Sandwiches
Auto Supplies • Newspapers & Magazines
Toys • Gas, Diesel & Propane • Video &
DVD rental • Fishing Supplies

938-2662

Rte. 103, Bradford



OPEN SEVEN DAYS! 6:00am-10:00pm

Bradford Bridge is on line:

www.bradfordnh.com

Click on the Bradford
Bridge link.

The Lake Massasecum Improvement Association Offers Photo Calendar

The Lake Massasecum Improvement Association has produced a 2005 Calendar with selected beautiful full color photographs of lake scenes. This fund raising project is to help defray the cost of the Lake Host and Milfoil Mitigation Programs for Lake Massasecum. It is hoped you'll consider purchasing one of these calendars for yourself and other family members who enjoy spending time here in Bradford on the lake. Also included in the calendar is some educational material to help you understand the problem that milfoil presents. The dates and time of the Annual Meeting and the Flare Nights are also listed. The calendars sell for \$12 and are on sale at Bowie's Market and the Lumber Barn.

As an on going project, the Association will sponsor a photograph contest for a 2006 Calendar. The photo contest will determine the photographs that will appear in the 2006 Association Fund Raising Calendar. Submit your photographs to the Association via mail to P.O. Box 15, Bradford, NH 03221, or electronically to

D_Currier@conknet.com. Photographs will be displayed at the annual meeting Saturday, July 9th, 2005 and will be selected by the membership in attendance. The top 13 vote getting photographs will be published in the 2006 calendar. The board of directors will select one to be the cover. Historic (old post cards), scenic and event photographs depicting life on Lake Massasecum should include the name of the owner/photographer if known and have some sort of caption. Original photographs will be returned to the owners at the contest conclusion so please label each photo submitted. The total proceeds from the sale of these calendars supports the Milfoil Mitigation and Prevention Program.

Honorable David P. Currier
 Founder, Bound Tree Medical, LLC

For more info call (603) 428-7619 Ext. 321
 Office E-mail: DCurrier@BoundTree.com
 Home E-Mail: D_Currier@conknet.com



Santa visited the Bradford Post Office on Saturday, December 18th and met with all little girls and boys good and bad. Phoenix Labbe, shown here, was good all year but wasn't quite sure he wanted to sit on Santa's lap this year.

Bradford Historical Society

The Historical Society thanks the Trustees and Friends of the Brown Memorial Library for the very nice celebration of the publication of *Early Families of Bradford*. Sherry Gould is a native daughter we can be very proud of. The work and time that she and Kathy Beals have put in, after editing it down to 583 pages, is truly admirable. Thank you, library people, for a warm and charming evening.

The Old Post Office will be open some

Saturdays during the winter from 1:30-3:00 pm, and by appointment. Call 938-5386.

The new *Genealogy of Early Families of Bradford*, the 2005 calendars of Bradford scenes, and the 200 Plus history are available for fun and informative winter reading. When Kathy returns to her Bradford home in the spring, we plan to have a reception for both authors. Call Harriet at 938-5314, or BHS PO box 551, or Milly at 938-5386.

- Anti-Aging Timeless Prescription™
- Health-Isotonix®
- Pet Store

Independent Distributor

GARY ANDREW
 OVER 700 COMPANIES

- Cosmetics-Motives®
- Skintelligence®

1-888-810-4098
 gandrew@gonowmail.com
 www.gottagetit.unfranchise.com

WALCO MECHANICAL CO.

REFRIGERATION, HEATING,
 AIR CONDITIONING
 ELECTRICAL CONTRACTORS

COMMERCIAL • INDUSTRIAL • RESIDENTIAL
 SERVICE • SALES • INSTALLATION
 MAINTENANCE PROGRAMS
 SYSTEM EVALUATIONS

938-2926

BRADFORD, NEW HAMPSHIRE

APPLESEED RESTAURANT

Our full menu is available for take out.
 Check out www.appleseedrestaurant.com

"WHERE FAMILY AND FRIENDS GATHER"

Tuesday-Saturday 5:00-9:00pm, Sunday 9:00am-noon, 5:00-9:00pm
 Route 103, Bradford, NH * Member, Bradford Business Association * 938-2100

938-2315 60,000 BOOKS

Books by the Lake

*Buying & Selling
Quality Used Books in Most Fields*
Route 114 at Lake Massasecum
Thurs-Mon 10:00-5:30

**DUMONT'S
BARBER SHOP****Wednesdays 8:00-6:00**

Main St. Denis Dumont, Owner

**McPuter**

Mike Pugliese—Owner/Technician

Located in the R.L. Dodge Building

102 E. Main St., Bradford, NH

mpugliese@conknet.com

(603) 938-2701Guaranteed Computer Sales & Service
Repairs & Upgrades Our Specialty!**CHAOS DESIGN**

Graphic Design

Web Design

Computer
Tutoringbevleo@iamnow.net
938-2996**Bradford Women's Club**

Reminder! Our next General Meeting is Tuesday, January 18, 2005 at 11:00. This meeting takes place at the First Baptist Church in Bradford and should be lots of fun.

We will have a Chinese Auction and Lunch Buffet. There is a \$3.00 charge for lunch and you also receive 2 tickets towards the Chinese Auction.

Everyone is asked to bring one small item (new or used) to be placed in the auction.

Hope you had a Merry Christmas and a Healthy New Year!

See you at the meeting!

Erica Gross, President

Bradford Country Squares

The Bradford Country Squares will host a Class Level Dance at the Bradford, NH, Town Hall on Sunday, February 20, 2005, from 2-4:30 pm. Please note the time and day of this dance differs from the usual. The theme is "Sweetheart Promenade." Dona Prudhomme will call, and Vera Prudhomme will cue. Admission is \$5 per person, and refreshments will be served. Spectators are free and always made welcome.

*Norma and Arlo Burns
Banner Chair*

Soo-Nipi Audubon Chapter

Take a walk through the wetlands with author David Carroll as he presents his slide program, "Seasons of the Turtles and Wetlands," at the Soo-Nipi Audubon Chapter meeting, Friday, January 14, 7:30 pm at St. Andrews Episcopal Church on Gould Road in New London.

Carroll's journey will take us through the annual cycles of turtles native to New Hampshire, emphasizing the indicator species of special concern: spotted, wood, and Blanding's turtles. He will discuss the critical importance of habitat along with the ecology of vernal pools. Carroll's books, prints, and T-shirts will be available at the meeting.

This program is open to the public and refreshments will be served. For more information contact Joy Bockius at 456-2480.

On Sunday, January 15, Robin Gray will lead the annual birding trip to the Parker River National Wildlife Refuge on Plum Island, Newburyport, Mass., to observe over-wintering water and shore birds. Participants should meet Gray at Warner Park and Ride, exit 9, I-89, at 8:00 am. Bring lunch, beverage, binoculars, and a scope if you have one. Please DRESS WARMLY. For details call Robin at 927-4127.

Phyllis H. Curtiss

THE LITTLE STORE THAT HAS IT ALL! OPEN 7 DAYS
Mon-Fri 5:30-am-8:00pm, Sat 6:00am-8:00pm, Sun 6:00am-7:00pm

BOWIE'S MARKET LLC

126 East Main Street, Bradford, NH
938-5533 Fax 938-2609

**A Happy New Year, from all of
us at Bowie's Market**

**COME IN AND CHECK OUT OUR
FLYERS FOR WEEKLY SPECIALS!**

Credit & Debit Cards WIC Food Stamps Accepted

Artist *continued from front page*

format camera to record maximum detail and prints his own work. He has exhibited throughout the country and is represented by many New England galleries. His photographs have been featured in regional and national publications and are found in private and corporate collections.

3 Silk Farm Road, Concord, NH 03301
(603) 224-9909
fax (603) 226-0902

www.nhaudubon.org
imacleod@nhaudubon.org

Current Use:

Small Taxes, Big Benefits

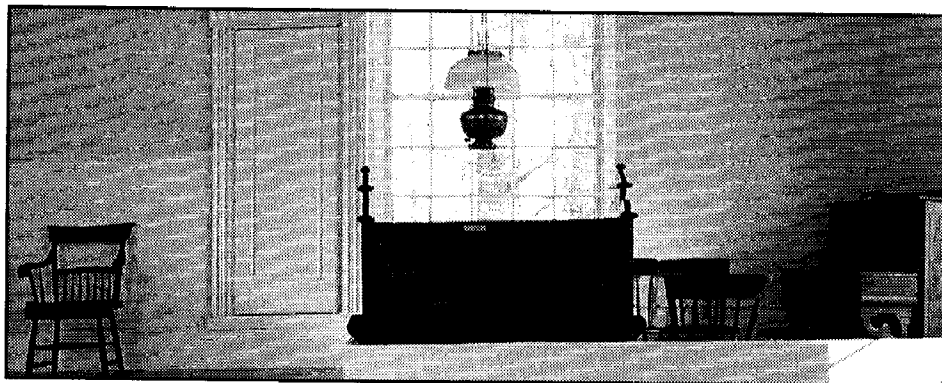
Being in a rural town, we often hear the words "current use" bandied about, particularly as we face our tax deadline. In a rural community such as ours, the concept may likely be applied to either our property or that of our neighbors. Ever wonder what Current Use is and what it means to Bradford? Simply put, it means that if you maintain land in traditional forestry and agricultural uses, you are taxed at a lower rate than the equivalent land in house lots.

The concept began in NH in 1968 as a strategy to prevent landowners from losing their land due to high taxes. Contrary to popular belief, the average family with land in the Current Use category has below average median income. The program applies primarily to tracts of land that are 10 acres or greater. The benefit to landowners is that they can then have their land taxes based upon its actual use and income-producing capabilities, and not the potential real estate value as for house lots. Much good comes from this practice. Here in Bradford, we've recognized the value of open spaces as we've developed trail systems, provided for forest management, and preserved many of our wild habitats as well as keeping our historical scenery.

But doesn't land that "sits there" become a drain to our tax base? Actually, it is more often quite the opposite. If you compare the type of development that has occurred in most NH communities with their tax revenues, the town services usually exceed any tax income received. Services devoted to long-term schooling, waste man-

continued on page 8

Bradford Center Meeting House Renovations Continue



Renovations continue at the 1838 Bradford Center Meetinghouse. Building Restorer Leonard Spencer (shown here with Amy Blitzer) and his crews have erected scaffolding, scraped loose paint from the ceiling, and completed necessary repairs. A clear sealer was applied after the ceiling was washed down with a vinegar/water solution. During the scraping process, Spencer concluded that the interior was probably wall-papered at one time. In the 1870's the loft was closed in with sliding windows and the stairway to the bell tower was removed from the east end of the foyer.


The stenciling was probably done at the time of the 1870's restoration. Two different stencil patterns have been uncovered: a simple scroll design and a far more complicated pattern. Both will be restored as this project continues.

photos and story by
Audrey V. Sylvester



Tax deductible contributions to help with this ongoing venture may be sent to the Union Congregation Society, c/o Edythe Craig, 90 Craig Road, Bradford, NH 03221.

**Breezy Hill
Self Storage
Now Open!
Call 938-5826**

IAMNOW.NET

Internet--Pure and Simple!
Internet Access:
 Toll free 56K dial up from Bradford, Henniker, Hillsboro, Newport, Sunapee, Sutton, Warner, and Washington
DSL (Bradford 938 only) Faster than dial up!
Refer a Friend -- Get \$20.00

WWW.IAMNOW.NET
 107 E. Main Street
 Bradford, NH
 603-938-2127

Hugo's Electric, Inc.

Licensed & Insured

RESIDENTIAL • COMMERCIAL

938-5573

3191 State Rte 114, Bradford

Custom Designed Jewelry

Spirit of New England

Jim Papuga—Goldsmith

Pendant, 14K gold
with "shell cut"
amethyst, citrine or
blue topaz center stone
and side diamonds.

STATE JURIED MEMBER OF
THE LEAGUE OF
NH CRAFTSMEN

By Appointment Only • 938-2901



FOXCHASE

Assisted Living

We Shovel, Shop, Cook

Why not spend the rest of winter
with us?

Pets welcome.

\$100/day rate.

Foxchase Assisted Living

P.O. Box 620

South Sutton, NH 03273

www.foxchaseassistedliving.com

(603) 938-5111

We are on Rte. 114 between
New London and Bradford.

Country Spirit
RESTAURANT & TAVERN

"In the only Henniker on earth"

Jct. Routes 202, 9 & 114.

Henniker, NH 03242

428-7007

Sun - Thurs 11am-9 pm

Friday & Saturday 11am-10 pm

Are You an Outdoor Woman?



Becoming an Outdoor Woman is a national program that is sponsored locally by the NH Fish and Game Department. Their fall week-end of workshops was a great success as will be their one day winter event of workshops on February 12, 2005, 8 am to 4:00 pm at the NH Fish and Game Department's Owl Brook Hunter Education Center in Holderness, NH. Registration opens January 3, 2005 and participants must be 18 or older.



Scenes from the Fall Workshops
in September 2004.

Topics will include ice fishing, snowshoeing/tracking, basic snowmobiling, snowshoeing/shooting and winter survival. Remember that this is a winter out-

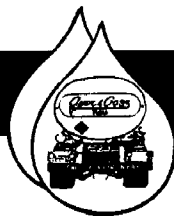
door experience, so participants should be prepared for cold, wintery weather. If we determine that it is too hazardous to travel, you can get information regarding postponement by calling 603.271-3212.

Owl Brook Education Center is located on Perch Pond Road (off Rte. 175) in Holderness, NH. Detailed directions will be sent to you in January or you can download them from Fish and Game's website: www.wildlife.state.nh.us.

Enrollment is limited to 50. Register

early to reserve your space! Get your application online at www.nhbow.com and send it right in. For more information contact the NH Fish & Game at 603-271-3212.

Ayer & Goss
FUELS



**24 HOUR SELF SERVICE
GASOLINE & DIESEL PUMPS**

Serving the area's heating needs for more than 60 years
FUELOILS & LP GAS / COMPLETE HEATING SERVICE

938-5335

Route 114, Bradford • Hall Ave., Henniker... 428-3333

We need stringers to cover local events and meetings; photographers and typists.
bradfordbridge@mctelecom.com ~ 938-2692

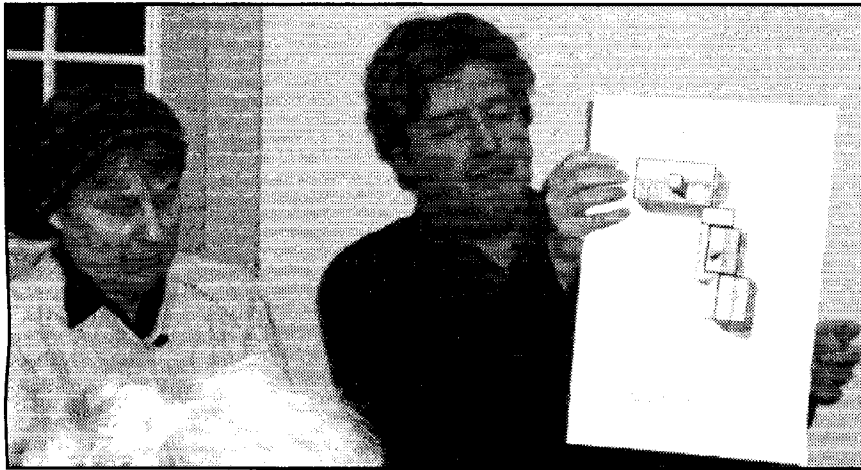


photo by Susan A. Janicki

At the December Rural Heritage Connection's meeting, landscape architect, Brian Muchow (seen here with his wife, Melanie), presented preliminary sketches showing how town-owned land (3.5 acres known as the Marshall Property on East Main Street) might look if it were used with town permission for the re-erection of the historical Marshall Barn and the addition of a Bradford Historical Society building (needed for the preservation of Bradford's history). The Bradford Parks & Recreation Committee also envisions a bandstand within the complex.

Women-owned Business After Hours

Join us on Monday, January 17th for dinner (6:30-7:30 pm) and a meeting (7:30-9 pm) at the Tracy Library in New London. Please park in the large parking lot across from the library. Come and meet other area business owners and bring your brochures and business cards. This is a fabulous networking opportunity. Each business owner will have a few minutes to speak about her business. Non-members and new members very welcome.

For information please contact Heather Turner, 603-938-2433.

BRADFORD \$525,000



Circa 1790 low posted Cape. Perfect Gentleman's Farm. Sited on 87 mostly level acres. Over 5,000 feet of frontage on paved road. Nice features, wide pine floors & beams.

HENNIKER \$269,900



Antique Colonial Farmhouse on 5 acres. Almost totally restored from top to bottom. Indian shutters, wide wainscoting, wood floors. Rumford fireplace, 9 over 6 windows, curved ceiling. Small kitchen leads to rough space ready for upgrade

Ann C. Hallahan, Managing Broker

**COUNTRY
HOUSES**

Real Estate

1 Center Road PO Box 525
Bradford, NH 03221
938-2020

www.CountryHousesRE.com

QUOTE OF THE MONTH

"Cheers to a new year and another chance for us to get it right."

Oprah Winfrey, *O Magazine*
US actress & television talk show host (1954 -)

the
**Rolling
Pin**

**TAKE A BITE OUT OF
MY HEART SWEETIE!**

Surprise your sweetheart with a heart-shaped cake for VALENTINE'S DAY!

The seamless beauty of the HEART BUNDT PAN will be a crowd pleaser your round!

CLOSED JANUARY FOR INVENTORY
OPENING FEBRUARY 1ST 2005!
TUES.-FRI. 10-6, SAT. 9-5, SUN. 9-3

17 East Main Street • Warner, NH 03278
456-2590 • Fax: 456-2938

DODGE'S GENERAL STORE

Featuring



Premium Delicatessen Products
Beer • Wine • Full Dairy Case
Breads & Groceries
Medicines • Health & Beauty Aids
Newspapers
Housewares • Hardware,



We are now an agent of
Riverside Dry Cleaners LLC
Pickup & Drop off

**OPEN EVERY DAY
8 am - 9 pm**

102 E. Main Street, Bradford

Hillside Heating & Air Conditioning

Commercial and Residential Installations

Call for free estimates & system evaluations

Satisfaction Guaranteed

Over 20 years of experience

Bradford, NH

603.938.2454

Newbury



Blodgett Landing location for this 2 plus BR home withing a short walk to all access points on Lake Suinapee. The COA beach area is nearest to this home on a larger lot of land. Well kept property. Must see!

\$218,500

ELLIOT HANSEN ASSOCIATES

◆ A REAL ESTATE COMPANY ◆

603-763-9999



The Savvy Internaut Suggests

Credit Cards and Shopping on the Web

Some of my computer class students have expressed concerns about ordering on the Internet and using a credit card. The concern is about bad things happening—especially their credit card numbers being stolen. I ask if they ever use a credit card for other purchases, especially at a restaurant where the waiter takes the card out of the dining room. It is very easy for an unscrupulous waiter to copy a credit card number. Why isn't this generally a problem? Because most people are honest but more importantly because credit card companies want you to continue to do business with them. I have had two instances where I have had to call up the credit card company. In both cases they involved gas stations that had entered the charge twice, because allegedly the charge had not gone through the first time they swiped my card. In both of these cases, the credit card company immediately took the extra charges off.

It is also true that credit—not debit cards—are limited by federal law to a maximum fraudulent liability of \$50 per incident. Essentially, there is no limit on debit cards.

I buy a number of items over the Internet using a credit card. I have never had any problems. But I make sure that the page on which I enter my credit card information is secure. There are two ways to determine whether the information you enter is secure (encrypted) so that only you and your recipient can see the number. Look for "https"—notice the "s"—in the address line or a closed padlock symbol somewhere on the lower part of the page.

The Bradford Area Community Center computer class will start again on January 7, after a holiday break. Come join us at 10 am each Friday in the basement of the Community Center. Bring your computer questions and problems. Bev and I and the class will try to help you solve them.

Bill Hatt

Current Use

continued from page 5

agement, fire and police protection, and roads are necessary to all developments, but most particularly to the residential structures. On the other hand, undeveloped land requires very little in services, typically well less than each dollar of revenue collected in taxes, therefore causing a net gain for the town. Many of you attended a seminar on the topic presented by the Office of State Planning (OSP) a few years ago, where several case studies of open space benefits were discussed.

Indeed, OSP found that property tax rates are most often lower in those communities with more open space per residential unit.

Thus, the concept of keeping land undeveloped can be both an environmental boon for a town, as well as a stabilizing influence on the tax rate. The secret is finding the right balance of open space, and residential/commercial development to best fit the needs and character of the town.

Bradford Conservation Commission



New London
526-6951

**Fresh Meats
&
Produce
Fresh Fish
Fresh Deli Items**



Bradford Excavating, Inc.



Complete Site Work:

Rock & Stump, Foundation, Septic,
Road Construction, Fill, Stone Retaining Walls
Servicing Bradford, Warner, Sutton, Newbury, Henniker, and surrounding towns.

Offering:

Professional Service, up to date Equipment with Experienced Operators
Certificate of Insurance (upon request)

Real Estate Hints:

Architectural Styles, Part Four- The Victorian

by Laura Hallaban



Most people know Victorian homes from the elaborate details many feature – exterior trim that gives a gingerbread house appearance for example. But the term “Victorian” does not describe a single architectural style. Nearly any house built during and shortly after the reign of England’s Queen Victoria can be called Victorian. The Victorian era in the United States covered the period from 1840 to about 1900 and it was a time of great innovation and achievement. New machines made it possible to mass-produce ornamental features such as moldings, columns and brackets. With the expansion of the railroad system, these building parts could be sent across the country. Here are several important types of Victorian houses and their common elements:

Queen Anne: This is the quintessential Victorian, named after the 18th century English queen. It is characterized by elaborate bric-a-brac, a complicated roofline and expansive porches that wrap around the front and side of the house. Often it will have a round tower or enormous round bay windows.

Gothic Revival: These homes are inspired by the cathedrals of medieval Europe. The exterior window moldings are arched, forming a point at the top. Some Gothic homes are constructed of stone and others are modest wooden cottages.

Italianate: Italianate houses have low roofs and wide eaves with large ornamental brackets, whereas most Victorians have steep roofs and irregular shapes.

This style tends to be rectangular and fairly symmetrical.

Second Empire or Mansard Style: Second Empire style houses were inspired by the architecture in Paris during the reign of Napoleon III. They have high, boxy mansard roofs that provided extra living space on the upper story.

Shingle: This style is rambling and informal and sided mostly in wooden shingles. A shingle house will have much less ornamentation and is typically found in affluent coastal resort areas.

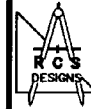
Stick: The Stick home is relatively plain but for the fairly complex exterior cladding that combines vertical, horizontal, diagonal and crisscross boards applied over the façade to create interesting patterns.

Eastlake: English architect Charles L. Eastlake wrote about furniture and other interior design details. This style uses the types of brackets, scrolls, spindles and other elaborate woodwork Eastlake described. Eastlake details include beaded spindles, jigsaw wooden forms, massive columns and balustrades.

Romanesque: Romanesque homes are constructed of rough-hewn stone and resemble castles as popularized by American architect Henry Hobson Richardson. They feature Roman arches at the entry or over the windows, round towers and large porches.

Folk or Vernacular: These modest farmhouses and cottages constructed during the mid-1800s and early 1900s feature ornamental trim and other surface details but do not fall easily into any distinct Victorian style.

FREE ADULT VOLLEYBALL
at The Bradford Elementary School
Fri. 7-9 PM & Tues. 8-10 PM
Beginning to Intermediate Players
Contact Heather. 938-2433



Septic System Designs
Test Pits, Perc Tests
Site Assessments
Land Planning
Permitting

ROBERT C. STEWART, Jr.
938-2256 Main Street



927-4973

Route 114
North Sutton

ALL & AWL REPAIR

Small Engine Sales & Service
Tractors • Harness & Tack Repair
Art, Kirk, Lynne & Kris Chadwick

Stewart Agency Realtors has been in the Lake Sunapee Region since 1935. We are a family business spanning three generations providing real estate services to the surrounding area. Our long-established ties give us a superior working knowledge of the Dartmouth-Kearsarge-Lake Sunapee regions. We ensure you the most pleasurable experience in your personal real estate transactions. As members of the National Board of Realtors we can access the most recent properties listed on the market by all Realtors in New Hampshire.

Our services include a NH Certified Wetland Scientist and established land planners experienced in working closely with local zoning and planning boards. We are NH licensed septic designers accredited to provide complete specifications and site assessments. With over 20 years of ecological background, we bring to you a full package of land development skills.

STEWART
AGENCY

Main Street, Bradford
938-2255 or 938-2256



SELECTMEN'S MEETING

October 19, 2004

Roll Call: Bruce Edwards, Chairman; David Pickman, Selectman; Peter Fenton, Selectman

Town Personnel: Cheryl Behr, Town Administrator

Minutes of October 5 accepted with explanatory addition that the release forms from the timber purchase agreement on the newly purchased town land on East Washington Road "had not been notarized."

Appearances: Mr. Avanzini appeared to discuss repurchase of a tax deeded property. He, his representative and Mr. Phil Picard, his power of attorney, accepted the Selectmen's decision giving him ninety days to finish the legal and financial paperwork; in the meantime he will pay rent to the town. Cheryl Behr will prepare a letter for Mr. Avanzini listing all costs incurred by the town for this repurchase.

Gerry Gold and John Warren, two of the commissioners of the Lake Todd Village District, presented RSA's indicating that the Selectmen must hold a public hearing at the request of the landowner if they are to take action on any of the boundaries in the Village district. Subsequently, the Lake Todd Village District would hold a meeting to approve or reject. This specific problem involves a piece of land with a separate deeded title with no access to Todd written in.

Jane Hubbard and Nancy St. Laurent from the Hazard Mitigation Plan, a branch of FEMA, requested the town apply for a grant for a pre-disaster plan, half of the money to be in kind supplied by the town. The plan would look at natural resources, natural disasters, including flooding, ice storms, communications etc, which would be due on Nov. 1, prepared by a town committee. It was felt the short time and necessary number of hours were impossible to meet.

Fire Chief Mark Goldberg and Chris Frey shared a concern that work is being done on the Sarto road subdivision without proper communication. They also feel the street plat is not following the road standards set forward in the subdivision text for roads. The Board of Selectmen have voted to authorize the Fire Department to contact the Town Attorney on this matter and other matters of access and life safety.

The lockboxes have been installed on the public buildings in town.

The Conservation Commission urged the Selectmen to authorize the East Washington Road purchase without the formal timber purchase notarized releases. They have one release notarized but will be unable to obtain the other until October 24th.

The sale will be forfeited if not approved within eight days. Attorney Coolidge said he will assume the risk of no financial loss to the town. Selectmen approved the purchase with the condition that the releases be authorized as soon as possible.

Road Agent Lucier requested a cell phone to save trips back to the Town Sheds. The Selectmen said the reception was poor in this area and it wouldn't be worth the purchase. Mr. Lucier also wants an upgrade of the town standard road width to a travel width of 20 feet and two foot shoulders. Selectmen voted unanimously in favor of the change. Mr. Lucier will make a request to the Planning Board that all future subdivisions meet and recognize this change.

The drainage ditch on East Main Street property has been completed by the homeowner, and East Washington Rd. has been paved down Gulf Hill.

Mr. Bellino's current use penalty has been paid, but an administrative problem with lot numbers results in a request that he have an extension to get the problem resolved before being assessed penalties which the Selectmen granted a thirty day extension.

Chief Valiquez presented the preliminary PD budget, and announced the search for a new officer has been started. Background checks will be done on candidates prior to final selection.

Accounts payable manifest reviewed and signed.

Timber tax bill, map 3 lot 6 approved and sent.

Driveway on Blaisdell Hill Road signed.

A notice to quit for the Sheriff's Dept. was signed.

The dry hydrant locations were identified as Sunset Hill Road and Deer Valley Road.

Selectmen will meet election day, November 2nd, 5:00 pm for their regularly scheduled meeting.

Review of traffic signs is being done by

the PD and will be reviewed at a public hearing.

Selectmen began the review of budgets submitted to them by town departments. Cheryl will contact department heads to set up individual meetings.

Meeting adjourned at 7:30 pm.

December 7, 2004

Roll Call: Bruce Edwards, Chairman; Dave Pickman, Selectman. Peter Fenton away with excused absence.

Minutes of the Nov 16th meeting were approved as written.

Appearances:

1. Tom and Jan Riley met with selectmen to discuss the Cemetery Budget. Selectmen approved budget with modifications.
2. Brooks McCandlish met with the Board of Selectmen to discuss abating the tax bill for the property purchased by the town on East Washington Road. The tax bills were printed before the sale was finalized. Selectmen agree.

Regular Business:

1. Accounts Payable manifest reviewed and signed.
2. Abatements signed for penalties charged in error.
3. Intent to cut wood signed for Battles and Duncan.
4. Steve Lucier commended for completion of level two of the Road Scholar program.
5. Yield tax warrant signed.
6. Selectmen requested Cheryl contact Attorney Brackett Scheffy regarding the Avanzini matter and inquire into the payment of back rent.

Selectmen will support the warrant article.

Bradford Board of Selectmen

Bruce Edwards, Chairman

Peter Fenton

Dave Pickman

Cheryl Behr, Admin. Assistant

Office Hours:

Monday–Thursday, 8:00 am–noon,
1:00–5:00 pm; Friday, 8:00–noon

Telephone: 603-938-5900

Meetings 1st & 3rd Tuesdays, 5pm

Rural Heritage Connection Looks Forward & Back

The Rural Heritage Connection of Bradford, Inc. (RHC) has been gathering momentum throughout 2004. Assisting the town of Bradford with the purchase of the Goodridge property, which adjoins the Bradford Bog, was the project that inspired the swift incorporation of our group as a non-profit. The RHC raised over \$15,000 in donations and an additional \$10,000 grant helped considerably to offset the purchase price, the subject of a Warrant Article at the last Town Meeting in March. The land acquisition was finalized in October. It will be important to protect this and other town-owned property permanently through conservation easements, which will be the subject of future meetings.

In July, the RHC had a booth at the Church Fair at the Bradford July 4th celebration and the Pow-wow at the Mt. Kearsarge Indian Museum in Warner. These were excellent opportunities to introduce our group to the public. We also encouraged visitors to explore the existing areas of interest in the town, including the Bradford Bog, Aiken Town Forest and the new Blitzer Easement on Rowe Mountain Road.

Two current projects are keeping our growing group busy —the Marshall Barn / Bradford Historical Society Cultural Center and Battles Farm. As described in an article in last month's *Bridge*, we are working on the first project with Bradford Parks & Recreation, Bradford Historical Society and the Bradford Women's Club to develop plans for a future collection



photo by Susan A. Janicki

Commitment is key: December's RHC meeting was well attended despite the cold weather and ongoing holiday festivities. The next meeting will be Monday, January 10 at the BAAC.

of buildings on East Main Street. Work on Battles Farm is just beginning, as we gather information about possible grants and other programs that can be used to preserve this open space for the future enjoyment of Bradford residents. Both of these projects, which encompass two different aspects of the "rural heritage" in the name of our group, can use lots of support. We need volunteers to research grants, write proposals, solicit (and contribute) donations, run fundraising activities, and more. There may be a warrant article about the cultural center project presented

at Town Meeting this March. We will keep you updated in the *Bridge*.

The RHC meets monthly on the second Monday at 7 pm in the Bradford Area Community Center on East Main Street. Please join us if you have any time to devote to preserving properties having historic, recreational or environmental significance. The RHC especially encourages residents and representatives from town organizations to attend this meeting. For more information, call: 938-2681.

Bill Glennie

Bradford Planning Board Notes

The Planning Board on December 14th gave conditional approval to the subdivision application for Chestnut Hollow that will create eight new building lots and two reserved conservation lots on a new road off Forest Street. The applicant must meet specific conditions that include: incorporation of recommendations from the Fire Department on the plan; all applicable legal documents to be reviewed by Town Counsel; an existing house to be removed; and parameters for water quality testing recommended by the Conservation Commission to be done weekly and continued at the applicant's expense for a two year period.

An application was received for a three-lot subdivision of a six-acre parcel located between Center and Cheney Hill Roads. The applicant was advised that, since the notice of the first public hearing on proposed zoning amendments had been posted, no final action can be taken by the Board until after the vote in March determines whether or not the proposed changes are approved. The Board made it clear that the proposals have been discussed over the past two years and are not directed at this particular application.

Work being proposed for the former Thistle and Shamrock Inn was discussed with L. Sam Vose of RCS Designs. It was

unclear whether or not any building permits had been issued. The Board voted to advise the Building Inspector that, as of December 14th, no application for site plan approval had been formally submitted to the Board.

The Board commended Edythe Craig for the great job she has done stepping in as Acting Chair of the Planning Board. Bill Glennie was appointed as an alternate to the Planning Board.

If substantive changes are made to the proposed zoning amendments, the Planning Board will hold a second public hearing. Notices will be posted at the Town Hall, Post Office, and Library at least 12 days before the hearing.

Bradford Phone List

TELEPHONE DIRECTORY 2003-2004 BRADFORD, NH

1000 1001 1002 1003 1004 1005 1006 1007 1008 1009 1010 1011 1012 1013 1014 1015 1016 1017 1018 1019 1020 1021 1022 1023 1024 1025 1026 1027 1028 1029 1030 1031 1032 1033 1034 1035 1036 1037 1038 1039 1040 1041 1042 1043 1044 1045 1046 1047 1048 1049 1050 1051 1052 1053 1054 1055 1056 1057 1058 1059 1060 1061 1062 1063 1064 1065 1066 1067 1068 1069 1070 1071 1072 1073 1074 1075 1076 1077 1078 1079 1080 1081 1082 1083 1084 1085 1086 1087 1088 1089 1090 1091 1092 1093 1094 1095 1096 1097 1098 1099 1100	1101 1102 1103 1104 1105 1106 1107 1108 1109 1110 1111 1112 1113 1114 1115 1116 1117 1118 1119 1120 1121 1122 1123 1124 1125 1126 1127 1128 1129 1130 1131 1132 1133 1134 1135 1136 1137 1138 1139 1140 1141 1142 1143 1144 1145 1146 1147 1148 1149 1150 1151 1152 1153 1154 1155 1156 1157 1158 1159 1160 1161 1162 1163 1164 1165 1166 1167 1168 1169 1170 1171 1172 1173 1174 1175 1176 1177 1178 1179 1180 1181 1182 1183 1184 1185 1186 1187 1188 1189 1190 1191 1192 1193 1194 1195 1196 1197 1198 1199 1200	1201 1202 1203 1204 1205 1206 1207 1208 1209 1210 1211 1212 1213 1214 1215 1216 1217 1218 1219 1220 1221 1222 1223 1224 1225 1226 1227 1228 1229 1230 1231 1232 1233 1234 1235 1236 1237 1238 1239 1240 1241 1242 1243 1244 1245 1246 1247 1248 1249 1250 1251 1252 1253 1254 1255 1256 1257 1258 1259 1260 1261 1262 1263 1264 1265 1266 1267 1268 1269 1270 1271 1272 1273 1274 1275 1276 1277 1278 1279 1280 1281 1282 1283 1284 1285 1286 1287 1288 1289 1290 1291 1292 1293 1294 1295 1296 1297 1298 1299 1300
--	--	--

The Bradford Phone List is available at the Bradford Area Community Center and at Bowie's Market, Bradford. Laminated, sturdy, and convenient, this list of all Bradford phone numbers is indispensable in all area homes and businesses. Pick up yours today, for just \$5.00. Proceeds benefit the Bradford Area Community Center.



BROWN MEMORIAL LIBRARY HOURS

Monday, 10 am–8 pm
 Wednesday, 10 am–7 pm
 Saturday, 10 am–3 pm
 StoryTime Wednesdays 10:30
 Telephone: 938-5562
 email: brownml@conknet.com

HENNIKER VETERINARY HOSPITAL

PROFESSIONAL ASSOCIATION
 Small Animal & Equine Practice
 Alyssa J. Brust D.V.M.
 Robert A. Brust D.V.M.
 Jill R. Patronagio D.V.M.
 Freya Moscowitz, V.M.D.

24 Hour
 Emergency Service
 House Calls Available
 Henniker,
 New Hampshire
 603-428-3441



Letter to the Editor

Dear Kearsarge Community Members:

The need to resolve the real physical problems at our present middle school has had the focused attention of your school board and leaders throughout the District for many years. Scores of people have worked hard to develop a comprehensive proposal that nearly passed at the last annual school district meeting. It is a design and plan that would provide the most affordable quality solution to serve all of the seven towns of the Kearsarge School District.

The staff at the Middle School works together in a committed and collaborative way to improve the achievement of our students and instill solid citizenship skills to ensure that the Middle School succeeds in its academic mission and becomes a safer environment that promotes learning and positive character. The present Middle School building is not only less than optimal for the number of students we serve and the teaching programs we have endorsed, but that it is by far the major obstacle to providing students, families, staff and our towns with the absolute best education we can afford.

As voters have approved warrant articles to explore different options, expend funds on professional architectural and engineering studies, and eventually purchase land in Sutton near the geographic center of the District, we saw that there would be large differences in the costs to build two schools. Perhaps more importantly, there would be significant differences in the ongoing, year after year, operating costs of two schools versus one. The sense of the school board over the past four years has been that our towns and our taxpayers need to be presented with reasonable, conservative and cost effective operating strategies that achieve educational excellence that respect the economic challenges we all face.

Kearsarge can offer a successful program containing different approaches because we do it affordably in a unified and shared learning environment. Under one roof, we can afford to offer every student from each town the choices necessary to ensure academic success. We couldn't afford two of everything important to this mission. The team at the middle school achieves synergy; they are able to provide children with far more as a single team than they would be able to do if divided. Separate would not be equal if we split one middle school into two. The District will face a divisive and potentially ruinous challenge if the time comes to divide the present teaching staff between two schools.

Our town is one of seven towns that benefit greatly from being part of the Kearsarge District. The District makes it possible for small communities to afford better educational services for our students than they otherwise could develop alone. I am grateful for the progressive support that citizens from every town in the District provide our schools.

Students from all over the District have told the school board it is crucial to the development of a sense of community to bring them together at the middle school and not at the high school. A single middle school fosters a social and cultural cohesion among our younger citizens that makes the Kearsarge Regional School District special.

Please support a new middle school for Kearsarge in the upcoming deliberative session and on voting day.

Thank you for your consideration.

Mark Fairbank, Chairman, Kearsarge Regional School Board



PIZZA CHEF

LUNCH SPECIALS ~ SUBS ~ PASTA ~ SALADS

"Delicious Pizza"

• Many New Items • Ice Cream • Beer & Wines

DINE IN OR CALL AHEAD

938-2600

Bradford Pizza Chef at the corner of Rte. 103 & Main ~ Bradford, NH

Lunch & Dinner

Outside

by J. Ann Eldridge

Back in November, long after hard frosts had done in the garden, there was a warmish afternoon when the unmistakable low duck-quack of a wood frog sounded intermittently from the swale. Why, and to whom, was he singing this lonesome remnant of his spring song? John Burroughs, observer and writer of no small fame, found a warbling wood frog one late December day in 1884. He, too, was puzzled by both its song and its apparent intent to winter in an unprotected location. Generously unwilling to assume idiocy for the creature, he reasoned that the frog had advanced knowledge of a mild winter and for such reason it would await spring just beneath the leaves. It was well known then that many amphibians and reptiles burrowed below the frost line or hibernated aquatically. Burroughs's theory that year proved incorrect. A severe winter followed, and on a bitter cold day in March he lifted the frozen matted leaves and found to his surprise the frog awake, alive, and well.

In the early 1980s, a physiologist in Minnesota also chanced upon a wood frog in winter shallowly hidden under leaves. This frog however, did not do what handled frogs usually do. It did not blink its glazed eyes. It appeared to be, and was, quite solidly frozen. He also presumed that the frog had not made a lethal error in judgment and proceeded to revive it by careful thawing. Thus began research on the freeze-tolerance of wood frogs, chorus frogs, and certain species of hatchling turtles. Similar cold weather strategies are likely also to be found in spring peepers and gray tree frogs.

Life as we know it, is water-based. As animals, we are mostly just fancy water containers. Cellular activity is restricted to that narrow temperature range between freezing and boiling, and most of us are uncomfortable at either end of that extreme. If we should unexpectedly freeze, the expanding shards of ice crystals will tear our delicate cell membranes causing important and irreparable leaking. This situation is what we are trying to avoid by attaching to ourselves layer upon layer of insulation and hiking up the thermostat at the slightest excuse.

Wood frogs, having had some millions of years in advance of us to work things out, have perfected elegant chemical solutions that are currently the envy of the cryobiotic industry.

Keep in mind though, that the winter we experience is not the same one that a one inch tall frog or meadow mouse experiences. The continuous snow cave that forms once the snow falls regulates the subnivian microclimate to within a few degrees above and below freezing. The fifty or so degree heat continually rising from the earth is trapped beneath the excellent insulation of ice, snow, and leaves. Wind is a huge factor at our height, but not at the level of a sleeping frog.

Picture a small brown wood frog in late fall food orgy. It is storing large amounts of starch in its liver. The weather is turning colder, metabolic activity slows down.

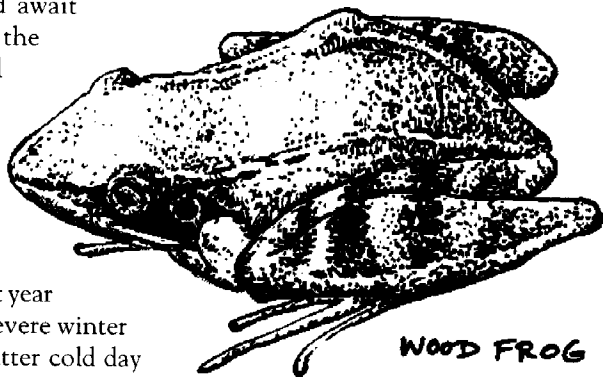
This much we too can understand. Then there comes a day when a toe freezes. Panic ensues in a human or mouse. Breathing and heart rate increases and blood flow is redistributed to the muscles. Some of this same "fight or flight" response also occurs chemically with the more patient wood frog. As with us, the hormone adrenaline is released from the adrenal glands, circulates to the liver where glycogen is converted to glucose, resulting in rising blood glucose concentrations. In the wood frog, the blood glucose response is massive. Levels instantly

reach those that would send us into a diabetic coma. For them, the glucose acts as a mechanical protectant for the cell membranes and at the same time serves as an antifreeze, lowering the temperature at which freezing occurs. Ice formation is almost magically restricted and actually *promoted* in the fluid *outside* the critical cells. These intercellular pockets of concentrated freezing osmotically draw more water out of the cells, aiding in preventing the hazardous formation of sharp ice crystals. Within the day the first finger or toe experiences freezing, the wood frog is rendered quite solid. Blood no longer flows, breathing stops. By any of our legal definitions, the frog is dead. It would make a small, unprotesting "thunk" if dropped.

An understanding of this phenomenon is of interest to the medical industry, as its application to humans might increase the time organs can be held prior to transplant.

A story is told of a certain town in the mountains of Vermont towards the end of the 19th century that formulated its own recipe for winter storage. For economy's sake, the aged and crippled were regularly frozen, to be revived refreshed in the spring to assist with planting. That recipe, it seems, has since been lost.

For more stories, check *Winter World* by Bernd Heinrich or *Mischief in the Mountains* by Hard and Greene at the Brown Memorial Library.



Bradford Area Senior Center January Calendar

MON. JAN. 3

Senior Center 8:45 am Strong Living Exercises – **New 12-week session begins**

Senior Center 10:00 am Craft Club "Baby Hats" project. Our goal is 100 hats to be made for the Baby Threads non-profit organization to help babies and young children in crisis or homeless throughout New Hampshire.

12:00 pm our Senior Community Dining serves BBQ Riblet, Cole Slaw, Potato Puffs, Peas, French Bread and Brownie for dessert.

TUES. JAN. 4

Senior Center 10:00 am Bradford Quilting Bees quilting the Senior Center's new fundraising quilt.

12:00 pm Senior Community Dining serves Grilled Chicken Breast, Stuffing, Sweet Potato, Garden Blend Veggie and Pudding for dessert.

THURS. JAN. 6

Senior Center: 10:00 am Foot Massage with Betty Perron. Betty, a local massage therapist, will be at the Bradford Senior Center the first Thursday of each month to give foot massages.

12:00 pm Senior Community Dining serves Meatloaf and Gravy, Rice Pilaf, Stewed Tomatoes and Apple Crisp for dessert.

FRI. JAN. 7

Senior Center: 8:45 am Strong Living Exercises

9:00 am – 12:00 pm "Continental Breakfast Café" The breakfast for seniors includes coffee, juice, pastry, cereal, and yogurt. It's fresh every Friday.

10:00 am 12:00 pm Dave Poisson from the "Fixit Program" will be available to discuss your personal home repairs or to answer any questions.

MON. JAN. 10

Senior Center: 8:45 am Strong Living Exercises

Senior Center: 10:00 am Craft Club "Baby Hats" project.

12 Noon a delicious Senior Community Luncheon of Salisbury Steak, Onion Gravy, Whipped Potato, Mixed Vegetables, Wheat Bread and Cookie for dessert.

TUES. JAN. 11

Senior Center: 10:00 am Bradford Quilting Bees

12 Noon Senior Community Dining serves Stuffed Peppers, Whipped Potato, Peas & Carrots, Wheat Bread and Fudge Stick for dessert.

THURS. JAN. 13

Senior Center: We celebrate January birthdays today! Birthday cake and ice cream will be served. If you have a January birthday, lunch is FREE and you receive a birthday gift. You must make a reservation by Jan. 6th to receive your gift!

12 Noon Senior Community Luncheon serves Beef Stew, Butternut Squash, Corn Muffin and Banana for dessert.

FRI. JAN. 14

Senior Center: 8:45 am Strong Living Exercises

9:00 am – 11:00 am "Continental Breakfast Café". Fresh fruit, pastry, cereal, juice and coffee every Friday.

MON. JAN. 17

Civil Rights Day Holiday. Senior Center is closed for the day.

TUES. JAN. 18

Senior Center: 10:00 am Bradford Quilting Bees

12 Noon Senior Community Dining serves Chicken – Broccoli – Cheese over Rice, Sliced Beets and Fruit for dessert.

THURS. JAN. 20

11:00 am – 12:30 pm Blood Pressure and Foot Clinic with Personal Touch Home Health Care. This FREE clinic is sponsored by the Bradford Community Center and is open to everyone in the community.

12 Noon Senior Community Dining menu serves Sliced Turkey, Stuffing, Cranberry Sauce, Whipped Potato, Peas & Onions, and Pudding for dessert.

FRI. JAN. 21

Senior Center: 8:45 am Strong Living Exercises

9:00AM – 11:00 am "Continental Breakfast Café". Fresh fruit, pastry, cereal, juice and coffee every Friday.

MON. JAN. 24

Senior Center: 8:45 am Strong Living Exercises

Senior Center: 9:30 am Craft Club boards bus for Stitchery Circle Class.

12 Noon Senior Community Dining menu serves Veal Parmesan, Rotini, Italian Bread, Italian Blend Veggie and Fruit for dessert.

TUES. JAN. 25

Senior Center: 10:00 am Bradford Quilting Bees

12 Noon Senior Community Dining serves Soup du Jour, Chicken Salad, Roll, Pear Salad and Pudding for dessert.

THURS. JAN. 27

Senior Center: 10:30 am Herbal Tea Tasting in celebration of National Hot Tea Month. Learn about these healthy teas and cozy up to sip a cup. Bring your own cup and saucer.

12 Noon Senior Community Dining menu serves Pot Roast, Whipped Potato, Squash, Rye Bread and Jello with Cream for dessert.

FRI. JAN. 28

Senior Center: 8:45 am Strong Living Exercises

9:00AM – 11:00 am "Continental Breakfast Café". Fresh fruit, pastry, cereal, juice and coffee every Friday.

MON. JAN. 31

Senior Center: 8:45 am Strong Living Exercises

10:00 am Craft Club "Baby Hats" project.

12 Noon Senior Community Dining menu serves Hot Dog, Baked Beans, Sauerkraut, Brown Bread and Peaches/Pears for dessert.

All programs are open to the public.
Any questions?? More information?? Call Sandi at 938-2104

Bradford Area Community Center January Calendar

MON. JAN. 3

Bridge Group – 1:00 – 4:00 pm
Junior Girl Scouts – 6:00 – 7:30 pm

TUES. JAN. 4

Fuel Assistance Applications – 9:00 – 12:00 pm - Call 456-2207 for appointment.

Brownies – 3:00 – 5:00 pm
Yoga Class – 6:00 – 7:15 pm- Call Fran at 456-3099 to register.

Kearsarge Area Preschool – 6:30 pm meeting.

Round Dance Instruction – 7:30 – 9:00 PM Call Regina Scudder 763-0187 for Information.

WED. JAN. 5

Yoga Class – 9:30 – 11:00 am

Thurs. Jan. 6

Foot Massage – 10:00 am with Betty Perron.

FRI. JAN. 7

Computer Class – 10:00 am -12:00 noon. Call Bev at 938-2996 for information.

SAT. JAN. 8

Writing Group - 9:30 -11:30 am

MON. JAN. 10

Bridge Group – 1:00 – 4:00 pm
Rural Heritage Connection – 7:00 – 9:00 pm

TUES. JAN. 11

Bradford Women's Club – Board meeting 9:30-11:00 am

Yoga – 6:00 – 7:15 pm Call Fran at 456-3099 to register.

BACC Program Information

For general information or to schedule an activity, call Director Jarna Perkins at 938-6228. There is available time and space to accommodate all age groups, organizations, or activities at the BACC.

For details or questions regarding Meals on Wheels, CAP Transportation, or Senior Programs call Senior Center Program Director, Sandi Bandieri at 938-2104.

For Kearsarge Area Pre-School information, contact Heather Cooper at 938-2668.

Round Dance Instruction – 7:30 – 9:00 pm. Call Regina Scudder at 763-0187 for information.

WED. JAN. 12

Yoga Class – 9:30 – 11:00 am

THURS. JAN. 13

Bradford Area Community Center – 5:30 – 7:00 pm Governance Board Meeting.

FRI. JAN. 14

Computer Class – 10:00 am – 12:00 noon. Call Bev at 938-2996 for information.

SAT. JAN. 15

Senior Council - 1:00 – 3:00 pm -Bingo

MON. JAN. 17

Bridge Group – 1:00 – 4:00 pm
Junior Girl Scouts – 6:00 – 7:30 pm

TUES. JAN 18

Fuel Assistance Applications – 9:00 – 12:00 noon by appointment. Call 456-2207

Brownies – 3:00 – 5:00 pm

Yoga Class – 6:00 – 7:15 pm– Call Fran at 456-3099 for information

Kearsarge Area Preschool - 6:30 pm meeting

Round Dance Instruction – 7:30 – 9:00 pm – call Regina Scudder at 763-0187

WED. JAN 19

Yoga Class – 9:30 – 11:00 am

Parks & Recreation – 6:30 – 8:00 pm

THURS. JAN 20

Blood Pressure & Foot Clinic 11:00 am–12:30 pm –no appointment needed –Free

FRI. JAN 21

Computer Class – 10:00-12:00 noon

SAT. JAN 22

Writing Group – 11:00 am– 1:00 pm

MON. JAN 24

Bridge Club- 1:00-4:00 pm

TUES. JAN 25

Yoga Class – 6:00-7:15 pm– Call Fran at 456-3099 for information

Round Dance Instruction – 7:30-9:00 pm - Call Regina Scudder 763-0187 for information

WED. JAN 26

Yoga Class – 9:30-11:00 am– call Fran at 456-3099 for information

FRI. JAN 28

Computer Class – 10:00 am- 12:00 noon

MON. JAN 31

Bridge Club – 1:00 – 4:00 pm
Junior Girl Scouts – 6:00-7:30 pm

For scheduling activities at the BACC call the Director, **Jarna Perkins** at 938-6228. There is available time and space to accommodate all age groups at the BACC.

- For details or questions regarding **Meals on Wheels** or **Senior Programs**, services or transportation, call the Senior Center Program Manager, **Sandi Bandieri** at 938-2104
- Kearsarge Area Pre-School; for info, contact **Fred Hubley** at 938-5521
- General Information - call the Administration Office 938-6228.



Senior Lunch: Mondays, Tuesdays, and Thursdays

Lunch is served at 12 noon. Join us for a delicious meal and fellowship. You might be surprised who you'll meet!

Advance reservations are appreciated.

Continental Breakfast Cafe Fridays 9:00 - 11:00 am, all are welcome.



January Calendar

TUESDAY, JANUARY 4

ZBA, Town Hall, 7:00 pm., if there is an agenda. CALL 938-5386 to confirm.

THURSDAY, JANUARY 6

BEOC, BACC, 7:00 pm
Cemetery Commission, Town Hall, 6:00 pm

MONDAY, JANUARY 10, 2005

Rural Heritage Connection Meeting
7 pm, Bradford Area Community Center

TUESDAY, JANUARY 11

Planning Board, Town Hall, 7:00 pm

TUESDAY, JANUARY 18

Conservation Commission, BACC, 7:30 pm

WEDNESDAY, JANUARY 19

Parks & Recreation, Town Hall, 6:30 pm

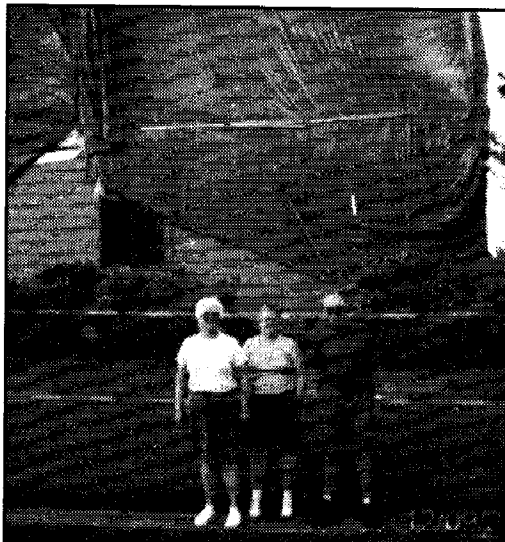
TUESDAY, JANUARY 25

Planning Board, Town Hall, 7:00 pm

Children's Story Hour, Wednesdays at Brown Memorial Library, 10:30 am

Bradford Historical Society, Old Post Office, open most Saturdays from 1:30-3:00 pm or by appointment, call 938-5386

Local Victims of Florida Hurricanes



Cynthia Glover, Martha Watson and Charles Glover.

Cynthia and Charles Glover and Charles' sister, Martha Watson, summer residents of Bradford, where they own seasonal cottages on Lake Massasecum, stand in front of a hurricane-damaged condo in the Sebastian area north of Vero Beach, Florida. Cynthia writes, "There are 180 units in our association. They are still demolishing and testing for mold. A crew is due in January to start the rebuilding. We are told next fall we can move back, if we're lucky!. Our favorite restaurant has just opened, outside seating. They hope to re-open in February."

Carpet ♦ Vinyl ♦ Ceramic Tile ♦ Hardwood ♦ Area Rugs

NEW LONDON ♦ FLOORCRAFT

and Creative Kitchens

Carl & Gail Olson
Route 11, Wilmot

526-2600
800-870-4646

Classifieds

WANTED: P/T evening/weekend help caring for an elderly gentleman. Experience with personal care a plus. Sense of humor, flexibility, self starter and interest in literary topics/reading aloud are assets. Must tolerate/appreciate 2 elderly dogs. Strong, mature woman preferred. Others considered. Salary negotiable depending on experience. References required. Call 938-2692 for more information or to schedule an interview.

FOR SALE: Brand new lady's 14k gold marquise (40 ct) diamond engagement/dinner ring. Stone measures 7.5 x 3.45 mm with side diamonds each .03 ct. Size 8. \$500. Call 938-2064

FOR SALE: 1976 Chevy K10-4x4. Runs; mint body work mostly done. 350 4 spd \$800. 4 sleds: two 81 440s, one is a Polaris other's a Yamaha. Also two 72 Skidoo Nordic 399s, best offer, 938-2865

To place a **FREE** classified ad of 40 words or less: please call Carey Rodd at 938-2692 or e-mail bradfordbridge@mcttelecom.com.

BRADFORD WEB SITE NOW HAS FREE COMMUNITY CLASSIFIEDS

Post Your Free Listings: Help Wanted, For Sale, Items Wanted, Tag Sales, Other. Classifieds will be listed for 1 month from date of receipt unless otherwise specified.

<http://www.bradfordnh.com>

To list events for the
February Calendar, call Beth Rodd
at 938-2692

or e-mail

bradfordbridge@mcttelecom.com
before January 20.

Due to printing deadlines, the
editors must receive display ads by
the 20th of the month.

Articles and notices received after
the 20th will be included only if
space allows.

**Bradford Bridge
February Deadlines**

Display ads	January 20
Classified ads	January 23
Articles	January 20