

THE BRADFORD BRIDGE

COMMUNITY NEWS BY NEIGHBORS FOR NEIGHBORS

Volume 13, Number 11; Issue 149

November 2003

Kearsarge Regional School District Budget

The forthcoming Kearsarge Regional School District proposed budget increase includes uncontrollable increases in health insurance, state retirement plan, and special education out-of-district placements. To control the cost of the overall budget, the School Board and Administrators have been forced to make hard choices.

The choice to cut the position of the specialist teacher in Mindstretch has been wrongly interpreted as a plan to reduce the enrichment program in the district. Such is not the case. We, in fact, want to increase opportunities for our talented children. The question is whether programs such as the math enrichment program should be taught by a math teacher such as our nationally recognized math coordinator, Betty Erickson, or be taught by a Mindstretch specialist. There is no intention of eliminating special events such as "Holocaust Week." Coordination of special assemblies and classroom teachers can be done as well by our librarians as by the Mindstretch coordinator.

The argument that our classroom teachers are not qualified to teach creative/critical thinking flies in the face of the fact that we have devoted significant professional development training to improve that capability. Parents should hold us responsible for the results and should rightly expect the continuation of enrichment programs in spite of the elimination of Mindstretch specialists.

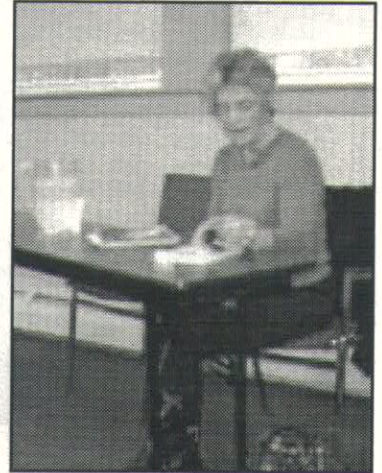
The Board has asked the Superintendent to prepare a detailed plan to assure that enrichment opportunities are increased, not decreased, and we will follow up this plan.

Another subject that has generated much interest in the community and throughout the District is the recently released NHEAP state standardized test scores. These scores pertain to 3rd and 10th grade of last year. The results are less than we had expected despite the work so far that has occurred in the Bradford school to improve NHEAP scores

KRSD Budget Continued on page 14

Reeve Lindbergh Visits Bradford

On Tuesday, October 25, Bradford was honored with a visit from Reeve Lindbergh, bestselling author and daughter of Charles and Anne Morrow Lindbergh. The occasion was Fran Lyons' memoir writing class, "Journey with me," at the Bradford Area Senior Center. Reeve has written a memoir, *Under A Wing*, about growing up in the large and boisterous family headed by the stern presence of Charles Lindbergh and the strong, quiet personality of Anne Morrow Lindbergh. Reeve read from that book, and from the later memoir of caring for her elderly mother, *No More Words: A Journal of My Mother, Anne Morrow Lindbergh*.



admitted that her fiction writing was in a large way autobiographical, so she decided finally to just do it! The result has been two wonderful books of insight into her upbringing and family. She encouraged all of us in the audience to continue our writing, as we are putting down memories that no one else has.

Bev Leo

Present at the reading were the Journey With Me writers, their invited guests, and a contingent from Havenwood in Concord. Fran Lyons has presented her writing workshop at area retirement homes, and has many graduates who are still writing and remembering.

Reeve's remembrances of her family, and especially of her mother, were interesting and amusing. But it was her comments on writing itself that held our attention. She

Inside

BNS Youth Sports	2
Planning Board	3
Selectmen's Meetings	4
Library Lantern	6
Letters	7
Town Clerk & Tax Collector	8
Real Estate Hints	8
Bradford Women's Club	9
Community Center Calendar	10
Then...	11
First Baptist Church News	12
Obituaries	13
Outside	15
Hunting Season dates	16
Town Calendar	16
Classifieds	16

Bradford Bridge December Deadlines

Display ads	November 20
Classified ads	November 23
Articles	November 20

THE BRADFORD BRIDGE



P.O. Box 463

Bradford, NH 03221

Telephone: 603-938-2692

FAX: 603-938-2995

bradfordbridge@mcttelecom.com

VOLUNTEER STAFF:

Bev Leo and Beth Rodd, Co-editors
Meg Fearnley, Assistant Editor
Carol Troy, Ad Manager
Debbie Lamach, Business Manager
Carey Rodd, Classified Ad Manager
Diane Planchet, Proofreader
Vern & Marion Hall, Subscriptions
John & Elinor Robie, Distribution
Gene Schmidt, Distribution
Milly Kittredge, Archivist

Subscription Information

For those wishing to receive the Bradford Bridge by mail, the annual subscription price is \$12 to cover the cost of mailing. To subscribe, please send a check to the address above.

Advertising

The Bradford Bridge is a free community newspaper supported by advertisers. To place an ad, call Carol Troy at 938-6186 or send a FAX to 938-2995. Ad deadline is the 20th of the month.

Submissions

The Bradford Bridge is written by neighbors, for neighbors. Anyone is welcome to submit articles and/or photographs of interest to the community. The Bridge reserves the right to edit submissions for length or content. Send articles or letters to Beth Rodd/Bev Leo at the address, FAX number, or e-mail address above by the 20th of the month.

HENNIKER VETERINARY HOSPITAL

PROFESSIONAL ASSOCIATION

Small Animal & Equine Practice

Alyssa J. Brust D.V.M.

Robert A. Brust D.V.M.

Jill R. Patronagio D.V.M

24 Hour

Emergency Service

House Calls Available

Henniker,
New Hampshire

603-428-3441



Classes Resume at KRES/Bradford

On September 29, KRES/Bradford students returned from their temporary classrooms at the Mt. Sunapee Ski Resort to resume classes in their newly renovated, mold free school. Repairs and replacement of 11 classroom carpets with tile required an evacuation of staff and students for the first three weeks of the school year.

Upon returning, students were treated to cake and ice cream before touring the new classrooms. Principal Scott Bouranis held an open house for parents and his presentation included two hundred slides taken by staff while conducting classes at the mountain. Mr. Bouranis said he received lots of positive feedback from parents, many of whom had not had an opportunity to observe the makeshift accommodations at Sunapee. With a clean bill of health and no more repairs needed in the foreseeable future, Mr. Bouranis said, "Everyone is happy to be back to a normal routine."



Computer Classes

Since the autumn of 2001, Bradford Area Community Center has offered elementary computer classes with Bev Leo and Bill Hatt, instructors. The structure of each class is somewhat determined by the needs of the students attending that day. We have covered using Word, Excel, Quicken, and Outlook Express e-mail. Bill has led many trips on the World Wide Web, teaching safe surfing, how to find information, and how to download patches and programs.

Recently, we took apart computers in class, cleaned them of dust, removed and replaced memory, and examined the inside of a hard drive.

For information in joining this fun class, call 938-2996.

Bradford/Newbury/Sutton Youth Sports

Though the weather was chilly, the 3rd Annual Golf Tournament was a success with great prizes and a lot of fun! Thanks to all who participated. BNSYS would like to thank all of the dedicated coaches for a fun and successful soccer season. The first and second graders enjoyed a post-game cookout at Warren Brook Park to bring their season to a close.

The Annual Soccer Awards and Dessert Social for the older athletes will be held at KRES-Bradford. The third and fourth grade teams will celebrate the season at their Social on Tuesday, November 4 at 6:30pm. The fifth and sixth grade team's celebration will be held on Wednesday, November 5 at 6:30pm. Please bring your clean uniform to turn in and your favorite dessert to share.

The BNSYS Annual Meeting will take place immediately following the celebration on November 5. There are vacant board positions that need to be filled—parents are encouraged to step up and volunteer.

On Saturday, November 8 at 9:00am at Warren Brook Park, BNSYS will host Fall Cleanup, i.e.: "Putting the fields and equipment to bed for the winter" day. Many helpful hands are needed. Bring your gloves, rakes, and community spirit and help out the organization that provides these great athletic programs for your children! As an added incentive, soccer picture distribution will also be held during Fall Cleanup. We hope to see you there!



Nic & Marie Hasey of Rowe Mountain Rd. announce the birth of their second son, Carter Hasey, born Sept. 10.



YOUR LOCAL INTERNET
ACCESS PROVIDER

"FROM SEA TO
SHINING SEA!"

Serving Bradford, Henniker, Hillsboro, Newport,
Sunapee, Sutton, Warner, and Washington

107 E. Main Street in Bradford 938.2127

Planning Board Notes, October 2003

As anyone who drives around town is aware, Bradford is growing rather rapidly (as are our neighboring towns). As the first step in dealing with this growth, the Planning Board recently signed an agreement with Central New Hampshire Regional Planning Commission (CNHRPC) to begin updating the 1996 Master Plan. CNHRPC will prepare a survey to gather input from town residents. The survey will be distributed this fall. A series of "visioning" sessions will be held prior to Town Meeting.

The Board also requested an outline of services to assist in dealing with this growth in a professional and efficient manner. CNHRPC could provide a "Circuit-Rider Planner" to be available at Town Hall for a specified time period each week to answer questions from the public and to assist the Board in preparing for its meetings and reviews. The cost for these services will be discussed by the Board, considered by the Budget Committee, and presented to the voters in March.

Bob Foor read a letter sent by the Selectmen to owners of a lot on Center Road informing them that the new driveway installed does not meet the safety requirements of the subdivision approval, which calls for a shared driveway between two lots.

In on-going business, the Site Plan review for a dog breeding facility operated on Ring Hill Road by Wanda Watson was approved with several conditions: A portion of the kennel building that extends beyond the setback line must be removed by November 11th. The facility is limited to six breeding adults (male and female), the dogs are to be contained on the premises, and bark collars and stockade fencing must continue to be functional for noise control. Any substantiated complaints of violations will result in revocation of the

permit to operate this facility, fines, and impoundment of the dogs.

An application for a street plat dealing with the access to Solitude Ridge from West Road was submitted, but will be held until additional information is provided. The subdivision application for Solitude Ridge was continued until November 11 when representatives from the consultants, Provan and Lorber and CNHRPC, will be present to discuss their reviews. A letter of extension for action on the project was signed by the applicant and placed in the file.

An application for a minor subdivision on Rowe Mountain Road was presented on behalf of Joseph N. and Juanita Battles in order to divide a seven-acre lot containing a house from the current 70+-acre parcel. The Board approved the application, but delayed signing the Mylar until necessary corrections are made to the plan.

The Board voted to recommend that the Selectmen approve a building permit on the Class VI section of Alder Plains Road since it is the first lot adjacent to the Class V portion.



Bradford Country Squares

The Bradford Country Squares will host a Class Level Square Dance at the Bradford Town Hall from 8:00-10:30pm on Saturday, November 15. Dan Bachelder will call and Bernie Porter will cue the rounds. Admission is \$5 per person and includes refreshments. For more information, call Bob Trombley at 763-3044. Spectators are free and always made welcome.

—Bob Trombley

927-4973

Route 114
North Sutton

ALL & AWL REPAIR

Small Engine Sales & Service
Tractors • Harness & Tack Repair
Art, Kirk, Lynne & Kris Chadwick
Hours: Mon-Fri 7:30-5:00, Sat til 1:00

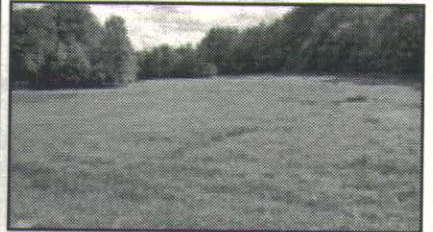
CHAOS DESIGN



* Graphic Design
* Web Design
* Computer Tutoring
bleo@iamnow.net
938-2996



Bradford



42 acres near town & school, zoned business/residential. Potential for 4 commercial lots. Access to Routes 103 and 114. Excellent view potential, wonderful farmland, gardens. Well-maintained 3 BR house, several barns/outbuildings, road frontage & timber value. **\$737,000**

Ann C. Hallahan, Managing Broker

COUNTRY HOUSES

Real Estate
1 Center Road PO Box 525
Bradford, NH 03221
938-2020

www.CountryHousesRE.com

PINK ELEPHANT BAZAAR

~NOW OPEN~

Saturday & Sunday 1:00 to 6:00

124 east Main Street, BRADFORD Behind BOWIE'S - on the LEFT

~Locally handcrafted FURNITURE, TOYS, GIFTS

~New & Used COLLECTIBLES & RECYCLABLES



The Workshop

The Workshop will meet on Thursday, November 13th, at 11:00am to finish the church project we started last month and assemble care packages for The Haven in White River. After lunch there will be entertainment supplied by several of the members. The group meets at the Friendship House in South Newbury.



New London
526-6951

**Fresh Meats
&
Produce
Fresh Fish
Fresh Deli Items**

NEWBURY



Cute year around two bedroom home with fir floors, fieldstone fireplace in the livingroom, new bath and kitchen, large sun porch, oil/FHA heat. Located close to Newbury Harbor and all activities there. A plus that goes with this property is a ten foot access to Lake Sunapee and a sandy bottom frontage facing west.

\$158,500

ELLIOT HANSEN ASSOCIATES

◆ A REAL ESTATE COMPANY ◆
603-763-9999

October Selectmen's Meetings

October 7. Ann Eldridge, Chairperson for the Conservation Commission, reported to Selectmen complaints received of dumping tires into Hoyt Brook. Ms. Eldridge provided information to the Selectmen regarding the filing of a formal complaint with Department of Environmental Services. Cheryl will file the report.

Bob Foor, Chairman of the Planning Board, met with Selectmen to discuss the Master Plan and the Town Web Site. The Planning Board has received a quote from Central NH Regional Planning Commission (CNHRPC) to provide assistance in three phases. The first phase will be completed with funds (\$5,000) voted at the March 2003 meeting. The second phase will require the town to raise an additional \$15,000 and \$10,000 the following year. The project will be presented to the Town during the March 2005 town meeting. The Planning Board is also requesting funds for a circuit rider from CNHRPC, to hold hours one day a week to meet with the public on planning issues and to attend meetings of the Planning Board twice a month. Bob Foor then discussed a proposal for the Town Web Site with Selectmen. Selectmen feel the matter should be placed before the Town at town meeting as a warrant.

Dick Keller, representing the Lake Massasecum Association, presented the Selectmen with the budget request for the milfoil program (\$5,590) for 2004. Select-

men supported the budget and will forward on to the Budget Committee.

Sue Ann Siarto met with Selectmen for the approval of the name "River Rock Hill Drive" for the private road to her proposed subdivision. The Selectmen approved the name of the road. Discussion continued on the road and the turning radius needed for emergency vehicles on the bridge. Police Chief James Kirby approved the plan for the Police Department. Fire Chief Mark Goldberg has issues with the plan.

Chief Kirby requested Selectmen approve the appointment of Dave Trottier to the position of Part-Time Police Officer. Selectmen signed the appointment and welcomed Mr. Trottier.

Selectmen signed a letter to the Department of Transportation requesting signage on the Bement Covered Bridge.

Intent to cut for Norcross signed.

Easement has been received from TDS for installation of an equipment shed on Rte 114.

CAP Budget request has been received for 2004 fiscal year. The request is for \$9,632, an increase of \$875.00.

Lake Sunapee VNA budget request has been received for 2004 fiscal year. The request is for \$3,974, an increase of \$167.00

Pike Industries has provided a quote for resurfacing Center Road from Jones Road to the Bradford Center. The amount of the quote is \$113,500. Selectmen wish to review the improvements needed on Center Road before re-paving the whole length and will evaluate in the coming weeks.

Selectmen decided to request preliminary replacement estimates from the State of NH on two bridges. One on West Road and one on Breezy Hill Road over the Massasecum River. These figures will determine the next bridge to be replaced under the Municipal Managed Bridge Replacement program.

Ground water sampling reports on the Naughton Landfill were reviewed.

Demolition quotes for the removal of the former Autocraft Garage were reviewed. Selectmen will request assistance from the Bradford Community Corporation to cover

Selectmen's, Continued on page 5

DODGE'S GENERAL STORE

Featuring
Boar's Head



Premium Delicatessen Products

Beer • Wine • Full Dairy Case
Breads & Groceries

We now have fresh meats & produce

**Your one stop for all
your Thanksgiving
needs, Hallmark
cards and Holiday
paper goods.**



**OPEN EVERY DAY
8 am - 9 pm**

**102 E. Main Street, Bradford
938-2258**

Hugo's Electric, Inc.

Licensed & Insured

RESIDENTIAL • COMMERCIAL

938-5573

3191 State Rte 114,
Bradford

Selectman's, cont. from page 4

the cost of the project.

Cheryl Behr requested Selectmen approve the training request for classes on October 15 & 16 and Oct 24. Michelle Marson will cover the office. Selectmen approved.

Transfer station ordinance will be reviewed by the Selectmen during a special work session on October 14, at 8:30am in the Town Hall.

Selectmen will also review the Town's Personnel manual at their work meeting on October 14.

The deed has been drafted for the intersection change on Cheney Hill Road. Selectmen are awaiting signatures on the deed before requesting the Road Agent schedule the work.

Selectmen signed a letter to the Department of Transportation Traffic bureau regarding the traffic emitters at the intersection of Main Street and Rte 103.

Joshua and Christine Rivers have written the selectmen regarding the building on a Class VI road (Alder Plains Rd). Cheryl will forward the forms to the Riverses.

Letter reviewed by Selectmen from Tom Wilkins and Susan McKeivitt regarding obtaining title to the former Rte. 114 Right of Way. Cheryl will contact Tim Bates regarding transfer.

Current Use Application for Charles and Janice Hewitt signed by Selectmen.

October 21. Jane Lucas and Betty Perron, representing Parks and Recreation, met with selectmen to discuss two issues. The first concerned the erosion at French's Park. Selectmen suggested the committee meet with the town road agent for his advice and develop a cost/estimate on the project. The selectmen suggested they return to the Board of Selectmen with these recommendations. This will allow for budget consideration of the plan or, if possible, correction sooner.

The second issue discussed concerned permission to use town land for the building of a gazebo for summer band concerts and programs. The committee suggested three sites: Brown Shattuck Field, the Marshall Property near the access to Main Street, or a portion of the Marshall property at the rear of the Community Center. Selectmen suggested the committee visit area towns to establish the size gazebo and design to be considered and requested an estimate of cost to build. Once these items are known, the choice of site can be determined. The committee wishes to apply the money raised from parks programs and

dances to the building of the gazebo. Selectmen will consider that issue after actual plans are presented.

Lyn and Bob Adams met with selectmen to request the change of the driveway established during subdivision to a new driveway on their property. Selectmen stated the driveway of record was established by the Planning Board as a condition of subdivision and could not be changed without the Planning Board approval. The location of the approved drive was established with safety issues considered. High volume of traffic on Center Road was considered in the placement of the drive. Selectmen referred the Adams' back to the Planning Board.

Intent to cut for Gildersleeve at Map 5 lot 71 on West Road reviewed and signed.

Intent to cut for Waite at Map 9 lot 30 on Alder Plains Road reviewed and signed.

Current use application for Merit Bank on Gillingham Drive approved.

Selectmen voted to borrow \$250,000 in anticipation of taxes. Cheryl will contact Lake Sunapee Bank for procedure.

TDS easement for signature. Cheryl reported discussion with Tim Bates. The matter must go to Town Meeting and should not be signed at this time.

Transfer of right of way property to Wilkins and McKeivitt will also need to be brought before the town at the March meeting.

SEA Engineering has submitted qualifications to the Planning Board and Selectmen for other services they can provide the town. Selectmen will review.

Bruce Edwards attended the Joint Board of Selectmen's meeting in New London on October 16. Edwards reported on the meeting and the \$23,000,000 to be placed on the Warrant for the new middle school and high school renovations. The School board plans to present the two projects on one warrant. The bond will be for 15 years at four percent interest.

Cheryl requested vacation time. Michelle Marson will cover the offices on Fridays for the remainder of the year. She will be available if conditions require her attention.

The selectmen have four more scheduled meetings this year. Budget reviews and personnel issues may require additional meetings. These will be scheduled and posted as needed.



Bradford Board of Selectmen

Bruce Edwards, Chairman
Peter Fenton
Dave Pickman
Cheryl Behr, Administrative Assistant

Office Hours:

Monday–Thursday, 8:00am–noon,
1:00–5:00pm
Friday, 8:00–noon

Telephone: 603-938-5900 • Meetings
1st & 3rd Tuesdays, 5:00pm



McPuter

Mike Pugliese—Owner/Technician

Located in the R.L. Dodge Building

102 E. Main St., Bradford, NH

mpugliese@conknet.com

(603) 938-2701

Guaranteed Computer Sales & Service
Repairs & Upgrades Our Specialty!

Thistle and Shamrock Inn



& Restaurant

11 West Main Street, Bradford, NH
03221

Bed and Breakfast Accommodations

Casual Gourmet Dining

5:30 to 9:00 pm

*Thanksgiving
Dinner at the
Inn*

Noon to 4:00 pm
Reservations required

Reserve early for those
Holiday parties and out of
town guests

938-5553

(Closed Mondays and Tuesdays)

Holiday Bazaar

The South Newbury Union Church will hold a Holiday Bazaar on Saturday, November 22 at the Friendship House from 9:00am until 2:00pm. You will find gifts for all your Christmas needs—ornaments, stained glass decorations, consignments, home-baked goods, kid's corner, puzzles, jewelry, crafts, and much more. Join us for lunch! The handicap accessible Friendship House is located on the corner of Village and Sutton Roads in South Newbury. Call 938-2064 for more information.



READY FOR OL' MAN WINTER?

Just put on your overcoat and come to Fox Chase.

We'll do the rest.

Foxchase, Assisted Living
Route 114, P.O. Box 620
South Sutton, NH 03273
(603) 938-5111



"In the only Henniker on earth"

Ict. Routes 202, 9 & 114.
Henniker, NH 03242

428-7007

OPEN
SEVEN DAYS A WEEK

Sun—Thurs 11am-9pm
Friday & Saturday 11am-10pm



Library Lantern

by Meg Fearnley

As I was preparing popcorn for our last book-to-movie discussion, the popcorn decided to burn in the microwave oven. I was astounded by the quick response to our fire alarm by the Fire and Police Departments and the Rescue Squad. They were all here within a very few minutes. It is good to know we have such dedicated and quick responders here in Bradford. And yes, my face was very red.

Join us on Friday, November 14 at 7:00pm as we continue our Frankenstein theme with a showing of the movie *Young Frankenstein* directed by Mel Brooks. This is purely for fun. Intellectual discussion is strictly forbidden! Note to Fire Department: We will be making the popcorn off-site.

We have a new small display in the library this month. When the basement got wet this spring, while cleaning up we discovered a box of artifacts. I have no idea what they are, where they came from or why

they were in the library basement. Please come in and take a look at the display. Maybe you can help identify these varied items. Two items we passed on to the Bradford Historical Society: A helmet and gas mask from World War I used by William Cressy.

Here are some of the new books added to your library in October. For adults:

Bleachers by John Grisham
Stone Cold by Robert B. Parker
Gatekeeper by Archer Mayor
Citizenship Papers by Wendell Berry
They Marched into Sunlight by David Maraniss

Fahrenheit 451 by Ray Bradbury
And for children:
The Slippery Slope by Lemony Snicket

On Noah's Ark by Jan Brett
Eragon by Christopher Paolini
Olivia and the Missing Toy by Ian Falconer
Loamhedge by Brian Jacques



LIBRARY HOURS:

Monday, 10:00am-8:00pm
Wednesday, 10:00am-7:00pm
Saturday, 10:00am-3:00pm
StoryTime Wednesdays 10:30
Telephone: 938-5562
email: brownml@conknet.com

Carpet ♦ Vinyl ♦ Ceramic Tile ♦ Hardwood ♦ Area Rugs

NEW LONDON ♦ FLOORCRAFT

and *Creative Kitchens*

Carl & Gail Olson
Route 11, Wilmot

526-2600
800-870-4646



Letters

I write this letter to raise the questions that many residents have about the sharp increases in our tax bill due December 12, 2003. It is very clear that the tax rate per thousand, especially in the town and local school portion, has had an outrageous increase since our tax bill due July 1, 2003. In 2001 the town completed a property re-assessment which may have dropped the tax rate per thousand but most residents property value increased. Therefore the majority of us still experienced an overall tax increase. How are we spending our town and school money that has produced such sharp tax increases?

I am a regular reader of the Bridge, local and regional newspapers and was taken by surprise by this huge tax increase. After the

town re-assessment our household had to save \$300 per month to pay our yearly taxes, then it increased to \$ 430 per month by July 2003 bill, and since then our tax increase has gone up so that we have to save \$545 per month just to pay the December 2003 bill.

What is going on?..... Many of us residents understand and have supported the operational expenses associated with the town and KRSD but why have expenses increased so much?

The residents of this town and school district need a written detailed explanation from the selectmen and school board representative and superintendent.

The writer asked to remain unnamed.

Tax rate/1000	7/1/2003	12/1/2003
County	\$ 1.10	\$ 2.34
School	\$ 3.64	\$ 10.21
Town	\$ 3.97	\$ 8.54
State Ed.	\$ 2.68	\$ 4.71
Total	\$ 11.39	\$ 25.80

Rural Heritage Association

The "open-space" preservation group that began to coalesce in early summer took a break on the Columbus Day weekend and will resume regular meetings on the 2nd Monday of each month at 7 PM at the Bradford Area Community Center.

For the meeting on November 10th, the revised outline that began with the help of the Community Conservation Assistance Program will be discussed as well as the mechanics of not-for-profit status. The working name of the group is the Rural Heritage Association (or Connection). The title is intended to reflect its mission of preserving the remaining treasures of this town's rural past. This is reflected in its

historical structures, granite echoes, and the forestry, agriculture, wildlife, and clean water that sustained the early community.

It's a certainty that population pressures will continue. There will be opportunities, however, for concerned owners of significant properties to be matched with federal, state, and local sources to assist in protecting the character of their properties well into the future.

If coming to the November meeting is not possible for you, but you might have talents, ideas, or encouragement, please contact Miranda Levin at 938-6095 or her email at inthering@conknet.com.

STATEWIDE FIRE EXTINGUISHER

Residential and Commercial
Fire Extinguisher Sales & Service
Inspection of Kitchen Suppression Systems



R. James Allen
P.O. Box 313
Bradford, NH 03221
phone 603-938-5245
cell 603-496-6525



Is this your tree?
Trees will be here by Thanksgiving. Come check them out!

Merrimack Farm & Country Store

Main Street, Bradford, NH
(603) 938-2211



www.merrimackfarm.com

BRADFORD

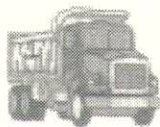


Very nice 1780's cape with attached 34x46 barn, fields & garden area, out-building pole barn 27x37, house south facing, very nice features, well kept with updates. 9 acres, 700' road frontage. Located on Rt 103 Bradford, south toward Warner.

\$325,000

STEWART AGENCY

Main Street, Bradford
938-2255 or 938-2256



Bradford Excavating, Inc.

Bradford, New Hampshire

Complete Site Work:

Rock & Stump, Foundation, Septic,

Road Construction, Fill, Stone Retaining Walls

Servicing Bradford, Warner, Sutton, Newbury, Henniker and surrounding towns.

Offering:

Professional Service, up to date Equipment with Experienced Operators

Certificate of Insurance (upon request)

938-5664



Town Clerk & Tax Collector's Office News

September 6. Wayne Moore and Christine Desfosses were married in Bradford.
September 10. Carter Castle Hasey was born to Harry and Marie Hasey in Concord.
September 11. Jordan Scott Durkee was born to Shannon and Jill Durkee in Lebanon.
September 13. Winifred Reeves died in New Hampshire.
September 23. Matthew Thomas Ulrich was born in Concord to David and Penny Ulrich.
September 27. Cassandra Jordan died in Henniker.
October 11. Robert Kulish and Deborah Bernacchia were married in Concord.
October 11. Michael Quinn and Amy Fournier were married in Northwood.
October 25. Sophie Burke died in New London.

The second half tax bills have gone out. If you did not receive yours or there is an error on your bill, please contact the Tax Collector's Office or the Selectmen's Office.

The office will be closed on November 11 for Veteran's Day. The office will also be closed on November 28 for Thanksgiving. Ann and I would like to wish all of you a safe and happy holiday season.

—Sue Pehrson

OFFICE HOURS:

Monday: Noon–7:00pm

Tuesday: 7:00–11:30am, 12:30–5:00pm

Friday: 8:00am–noon, 1:00–5:00pm

TELEPHONE: 938–2288, 938–2094

WALCO MECHANICAL CO.

REFRIGERATION, HEATING,
AIR CONDITIONING,
ELECTRICAL CONTRACTORS

COMMERCIAL • INDUSTRIAL • RESIDENTIAL

SERVICE • SALES • INSTALLATION

MAINTENANCE PROGRAMS

SYSTEM EVALUATIONS

938–2926

BRADFORD, NEW HAMPSHIRE



Real Estate Hints:

Arsenic in Water

by Laura Hallahan

You may have read recently that Southeastern New Hampshire has been identified as having moderate to high concentrations of arsenic in the drinking water. The arsenic in that region seems to be of geologic origins, though in some cases it may be due to present or past land-use practices. As a result, residents in Hillsborough, Rockingham and Strafford Counties have been advised to test their wells. While this advisory does not extend to Merrimack County, if you own a home with a private well—especially a dug well—you may want to test for arsenic at the time you do your annual water quality testing. Here are the facts you should know:

Arsenic is a semi-metallic element that is a member of the nitrogen family and it occurs naturally in rocks, soils, and water that come in contact with these rocks and soils. It is odorless and tasteless. It can combine with other elements to form inorganic arsenicals, which are primarily present in water. Exposure to arsenic at high levels poses potential serious health effects as it is known as a human carcinogen and also has been associated with the development of diabetes. Arsenic enters the body primarily through the mouth. While arsenic occurs naturally in rocks, soil, water, air, plants and animals, it can also be released by volcanic action, erosion and human actions. Almost 90 percent of industrial arsenic is used as a wood preservative but it is also used in paints, dyes, metals, drugs, soaps and semi-conductors. Arsenic in drinking water is measured in parts per billion (ppb) and the EPA-established maximum level for arsenic in drinking water is 10 ppb. Symptoms of arsenic poisoning include thickening and discoloration of the skin, stomach pain, nausea, vomiting, diarrhea, numbness in the hands and feet and even partial paralysis and blindness. If arsenic is detected, there are certified point-of-use reverse osmosis and distillation devices for the reduction of arsenic in water.

Some Simple steps you can take:

- Use licensed or certified water well drillers and pump installers when a well is constructed.
- An annual well maintenance check, including a bacteria test, is recommended.
- Keep hazardous materials away from your well.
- Check the well cover or cap periodically to ensure it is in good repair.
- When landscaping, slope the ground away from your well for proper drainage.
- Don't pile leaves or snow around your well and be careful when mowing near the well.
- Keep well records in a safe place.
- Be aware of any changes in your well or the area around your well.

The number of people with arsenic contaminated wells is likely to grow as the region's growing suburban population increasingly depends on drinking water obtained from existing and newly built private wells. For additional information, contact the National Ground Water Information Center at 800–551–7379 or the New Hampshire Department of Environmental Services on the web at www.des.state.nh.us/ws.htm.



**24 HOUR SELF SERVICE
GASOLINE & DIESEL PUMPS**

Serving the area's heating needs for more than 60 years
FUEL OILS & LPGAS / COMPLETE HEATING SERVICE

938–5335

Route 114, Bradford • Hall Ave., Henniker . . . 428–3333

Bradford Women's Club

The BWC needs its members to help with the current craft fair. Set up will be Saturday, Nov. 22 and the consigners will be in Sunday, Nov. 23, 10am to 2pm. The fair will be Nov. 28, 29 and 30 at the St. Peter's Masonic building on Main Street. Please try to put a few hours aside to help. Call Barbara at 938-2691.

Thanks to Chuck Johnsen for his informative program on 911 on October 21.

There will be an executive meeting Nov. 11 at 9:30AM at the Community Center. There will be no membership meeting this month.

Barbara Vannata, BWC President



DO WE WANT A TOWN CHRISTMAS TREE?

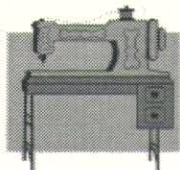
The BWC needs help. We need a volunteer to put lights on the tree at the library and take them down after the holidays. Our past volunteers have moved out of town. If you are able to help, please call Barbara at 938-2691.

BWC Craft Fair:

Friday, Nov. 28, 9am to 4pm

Saturday, Nov. 29, 9am to 4pm

Sunday, Nov. 30 11amM to 2pm



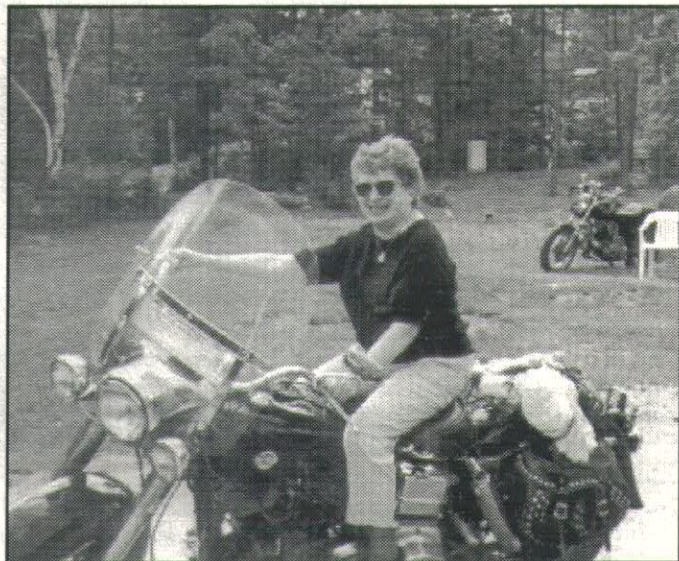
FAREWELL, SOPHIE BURKE

You came to Bradford 45 years ago from New York. New York would always be dear to you and you would remain a New Yorker always. Bradford would become your home though. You enjoyed it and loved the home you lived in alone for many years after your husband, Dick, passed.

For many years you had the companionship of your beloved cat, Minny, which you inherited from your good neighbor Rick Dolan when he moved. For years you walked West Road, talking to anyone and everyone who passed. If you needed help you'd just flag someone down. When you lost your dear friend Nellie Wing 15 years ago, her daughter Penny became a dear friend with whom you spent most holidays and many weekends at her home.

You met many people at Lake Sunapee Beach, Bradford Women's Club, The Library, The Women's Guild. You were a staunch Democrat and worked the polls for many years. You knew most of the voters and if you didn't, you soon did. You looked forward to the fall family get togethers.

You were never lonely you'd say because you had your telephone. Keeping in touch with dear old friends who you loved to visit and travel with. You'd call to complain or praise a product, finding out all about the person you spoke to, knowing they would send out the free coupons. You made all the calls for the Bradford Woman's Club, keeping all informed on what was going on. You enjoyed working at the Pepper and Sausage



Booth and sold raffle tickets like no one will ever be able to match. You were a regular on the parade floats. You enjoyed the Guild and the good works they did.

The Library was probably your favorite place. You enjoyed their programs and loved reading. Mysteries were your favorite but you'd read anything that kept you up on the latest movies, plays and what was going on in the world and then speak as if you'd been there or done that.

Food was your favorite pastime. You loved to collect recipes; you wouldn't make them but you'd have them to talk about or pass on like they were your own personal favorites. You loved going out to eat and critiquing the meal from start to finish.

You had many friends, but for those who were always there for those doctor and hospital runs I say for you, Thanks Penny, Clare, Kay, Kim and Deb.

We all say to you, "Goodbye Friend, Thanks For the Memories."

Jane



APPLESEED RESTAURANT

Don't forget Wednesday night pizza.
We'll be closed Thanksgiving.
Have a Happy Thanksgiving holiday.
It's never too early to start planning your Holiday Party. Call us--we can help.

"WHERE FAMILY AND FRIENDS GATHER"

Tuesday- Saturday 5:00- 9:00pm, Sunday 9:00am- noon, 5:00- 9:00pm
Route 103, Bradford, NH * Member, Bradford Business Association * 938- 2100



Breezy Hill Self Storage

Now Open!

Call 938-5826

Bradford Area Community Center

November Calendar

SATURDAY, NOVEMBER 1

Paint-a-Picture, 9:00am-3:00pm. For registration and information call Jane Lucas at 938-2075.

MONDAY, NOVEMBER 3

Junior Girl Scouts, 6:00-7:30pm

Senior Center: 8:45am Strong Living Exercises.

Senior Center: 10am Craft Club.

TUESDAY, NOVEMBER 4

Fuel Assistance, 9:00-noon. Call Laura Hall at 456-2207 for appointment.

Brownies, 3:00-4:30pm

Senior Center: 10am-12pm Bradford Quilting Bees, led by Jane Heald.

Senior Center: 10:30am-12pm Massage with Pamela Monaghan. Donations.

WEDNESDAY, NOVEMBER 5

Scrapbook Workshop, 7:00-9:00pm. Call Donna Long at 938-6431 for information.

THURSDAY, NOVEMBER 6

Senior Center: Trip to Christmas Tree Shop, \$9.00. Depart Senior Center 8:15am, and Warner 8:45am. Lunch on your own, call ASAP 938-2104 to reserve space. **No Lunch at Center Today.**

FRIDAY, NOVEMBER 7

Senior Center 8:45am Strong Living Exercises.

SATURDAY, NOVEMBER 8

Senior Council (or "Saturday Seniors"), 1:00-3:00pm. For fun, games and refreshments. Newcomers always welcome.

MONDAY, NOVEMBER 10

Senior Center: 8:45am Strong Living Exercises.

Senior Center: 10am Craft Club.

Senior Center: 10am-12pm FREE hearing tests. call 938-2104 for appointment.

Senior Center: 2:30pm Writing Workshop.

TUESDAY, NOVEMBER 11

Veteran's Day Holiday, Senior Center is closed.

WEDNESDAY, NOVEMBER 12

Floral Arranging, 7:00-9:00pm. Call Donna Long at 938-6431 for information.

THURSDAY, NOVEMBER 13

Bradford Area Community Center Governance Board, 5:30-7:00pm.

Senior Center: 10:30am Claudia Messier,

Merrimack County Long Term Care available for questions. call for appointment.

Senior Center: after lunch, Beck from Lake Sunapee VNA demonstrates the new Century Monitor. Today we celebrate November birthdays with cake and ice cream.

FRIDAY, NOVEMBER 14

Bradford Community Corporation, 7:00am

Senior Center: 8:45am Strong Living Exercises.

Senior Center: 10:00am-12:00pm Dave Poisson from Mr. Fix-It available to discuss services and answer questions. Call for appointment. Free service.

MONDAY, NOVEMBER 17

Junior Girl Scouts, 6:00-7:30pm.

Senior Center: 8:45am Strong Living Exercises.

Senior Center: 10:00am Craft Club will have a class by Vicki's Country Florist to make a Thanksgiving centerpiece. Cost \$6.00.

Senior Center: 2:30 pm Writing Workshop.

TUESDAY, NOVEMBER 18

Fuel Assistance, 9:00-noon. Call Laura Hall at 456-2207 for appointment.

Brownies, 3:00-4:30pm

Senior Center: 10:00am-12:00pm Bradford Quilting Bees.

WEDNESDAY, NOVEMBER 19

Cross Stitch Workshop, Call Donna Long at 938-6431 for information.

THURSDAY, NOVEMBER 20

Blood Pressure & Foot Clinic 11:00am-12:30pm. Free, courtesy of Personal Touch Home Health Care.

Senior Center: 10:30am Service Link is available for questions. Free referral service, meet Beth or Bobbie face to face. Call for appointment.

Senior Center: 11:am-12:30pm Blood Pressure and Foot Clinic with Personal Touch Home Health Care. FREE clinic sponsored by Bradford Community Center and is open to everyone in the community.

Senior Center: Thanksgiving meal: Enjoy a delicious turkey dinner with all the fixings at 12 Noon! Bring a friend!

FRIDAY, NOVEMBER 21

Senior Center: 8:45am Strong Living Exercises.

MONDAY, NOVEMBER 24

Senior Center: 8:45am Strong Living Exercises.

Senior Center: 10:am Craft Club.

Senior Center: After lunch, Movie Monday.

Writing Workshop will not meet today.

THURSDAY, NOVEMBER 27

HAPPY THANKSGIVING! SENIOR CENTER IS CLOSED.

FRIDAY, NOVEMBER 28

No Strong Living Exercises today.

Program Information

For general information or to schedule an activity call Director Jarna Perkins at 938-6228. There is available time and space to accommodate all age groups, organizations or activities at the BACC.

For details or questions regarding Meals on Wheels, CAP Transportation, or Senior Programs call Senior Center Program Director, Sandi Bandieri at 938-2104.

For Kearsarge Area Pre-School information, contact Heather Cooper at 938-2668.

BACC Ongoing Activities

Bridge Group, Mondays, 1:00-4:00pm, Community Room

Senior Center Luncheon, Mondays, Tuesdays and Thursdays, noon

Yoga Class, Tuesdays, 6:00-7:15pm, Community Room

Yoga Class (Not Advanced), Wednesdays, 9:30-10:45am, Community Room. Call Fran at 456-3099 to register.

Computer Tutoring, Fridays, 10:00am. Beginners: first and third Fridays, Intermediate: second and fourth Fridays. For information call Bev Leo at 938-2996.



Soo-Nipi Audubon Chapter

On Saturday, November 8, the Soo-Nipi Audubon Chapter will sponsor a birding trip to Great Bay National Wildlife Refuge and the New Hampshire coast to see migrating water and shore birds. Birding will take place at vehicle stops and no intensive walking is involved. Please meet leader Robin Gray at Warner Park and Ride, exit 9, I-89, at 8:00am. Bring lunch, beverage, binoculars, and a scope if you have one. For details call Gray at 927-4127.

The Soo-Nipi Audubon Chapter slide program on "Bird Banding at Long Point, Ontario, Canada," will take place Friday, November 1, 7:30pm at St. Andrews Episcopal Church, Gould Road, New London. Speaker Will McCumber has been active in the Twin State Tanagers Birding Team sponsored by the Vermont Institute of Natural Science. This program is open to the public and refreshments will be served. For more information please call Ruth White at 763-4893.

—Phyllis H. Curtiss



New London Area House Tour Offers Holiday Inspiration

Six very special homes in the Pleasant Lake area of New London and Elkins will open their doors to the public Saturday, December 13, as part of The Fells' Holiday House Tour. The self-guided tour, which runs from 10:00am to 4:00pm, is a benefit for The Fells, an historic site and wildlife sanctuary in Newbury. The homes on the tour range from a 1790 farmhouse decorated with continental antiques to a contemporary post-and-beam built with an extra wing for the grandchildren. Three of the tour stops offer spectacular views of Pleasant Lake. The homes, elegantly decorated for the holidays, will also display the homeowners' special collections including historic quilts, duck decoys, samplers and silhouettes passed down through six generations, nutcrackers and Santas, and an elaborate mechanized village with an overhead working train.

Tour headquarters, the historic Elkins Masonic Lodge, will offer an a la carte luncheon of homemade soups and a holiday

boutique of unusual gifts and decorations. All tour-goers should stop first at the Lodge in Elkins just off Route 11 to pick up the tour map.

"We're pleased to offer this chance to peek into these elegant homes, each with a different flair and all sure to inspire us with the exuberant spirit of the holidays," said Maggie Stier, director of The Fells. Advance tickets for the tour are \$20 and available at The Fells in Newbury, Morgan Hill Bookstore and C. B. Coburn in New London, the Bayberry Barn Christmas Shop in Sutton, MainStreet BookEnds in Warner, and Bloemenwinkel in Lebanon. On the day of the tour, tickets are \$25 and will be sold only at the Elkins Masonic Lodge. On Friday, December 12, the eve of the Holiday House Tour, Dan and Ellie Snyder are hosting a Holiday Patron Party at their Pleasant Lake home, with live music and catered hors d'oeuvres. Tickets for the cocktail party are \$50 and can be reserved by calling The Fells at 763-4789.

Then...

by Milly Kittredge



NEW OWNERS: *Ralph L. Dodge, left, passes the ownership papers of the R.L. Dodge Co. Hardware and Department Store to the new owners, Debbie and Bernie Lamach. The store is located on Main Street in Bradford. (1983)*

THEN AND NOW...Still There

The building, near the railroad tracks, was built as a garage in 1927 by Albert Ansart. Charles Ballard remodeled and used it as storage. It was next run by Dustin and Vera Cressy. After Dustin died, Ralph Dodge and Vera married, and he bought the building in 1945 from Carl Cressy, brother of Dustin Cressy. Ralph and Vera had the rear addition built in 1971. Then the Lamachs owned the store for almost twenty years, and it is now owned and operated by Mike Pugliese and Katherine White.

Custom Designed Jewelry

Spirit of New England
Jim Papuga—Goldsmith



Ring in 14k gold with half moon shaped blue topaz center stone and white sapphires on the side.

Member of the League of NH Craftsmen
By Appointment Only • 938-2901

FIREWOOD

\$185/CORD

(2 cord minimum)
Dry Cordwood
Cut, Split, Delivered

18" log length

Please call, leave message

938-6443

First Baptist Church News

From Lynne E. Hubley

"Kids Kwire": Our children are practicing on Sunday mornings at 9:30am.

Inquirer's Group: This women's study group that meets Mondays at 12:15pm in the Church vestry. They are currently studying M. Scott Peck's book "The Road Less Traveled." (November 3, 10, 17 & 24).

Craft Workshops: The ABWM-sponsored Fair is the last Saturday in November. Cheryl McDonald will be meeting every Monday afternoon during November at 2:15pm in the Church vestry to make crafts to be sold at the fair. (November 3, 10, 17 & 24).

Mom's Bible Study: The group meets in the pastor's study on Wednesday mornings. These are the following meetings in November: November 5 and 12 (9:00-10:00am) November 19 (10:00-11:00am). Childcare is provided.

Youth Group: Youth in grades 5-8 are invited to meet at the Church on Wednesday, November 5 at 6:30pm and travel to the home of Dick and Phyllis Whall for an evening of refreshments and fun. We will return to the Church by 8:00pm. On Saturday, November 22, we will meet at the Food Pantry from 8:00-9:00am to help fill the Thanksgiving baskets that will be distributed to needy families on that day. We will have cider and donuts.

Bible Study: Fred Hubley leads a Thursday morning bible study at the Fiske House from 9:00-10:00am.

Women's Christian Guild: Ladies will meet at the Church on Friday, November 7 at 12:30pm and travel to the Wilmot Flat Baptist Church for Church World United World Community Day Service. On Monday, November 17 at 10:00am, the group will meet at the Church and assemble Thanksgiving remembrances for shut-ins in the area.

American Baptist Women's Ministries: On Wednesday November 12 at 7:00pm the program will include Thanksgiving readings and poems. Women are invited to bring an object that is symbolic of something they are thankful for. Homemade Thanksgiving pies will be the dessert for the evening.

ABWM Spiritual Retreat (part 2): On Saturday, November 15 from 10:30am-3:00pm, the ABWM will hold "Part 2" of a retreat on "Boundless Love." Lunch will be beef stew and harvest cake. You do not have to have attended part 1 of this retreat to come on November 15.

Harvest Dinner: On Monday, November 17 at 6:00pm we will host a Harvest dinner. The cost is \$7.00 for adults. \$4.00 ages 4-12. Ages 3 and under are free. Reservations are most appreciated. Call 938-5313.

Men's Fellowship: The men will meet at the home of Fred & Lynne Hubley on Wednesday, November 19 at 7:00pm for an evening of pool, refreshments, and fellowship.

Thanksgiving Baskets: The Food Pantry committee will distribute thanksgiving baskets to needy families on Saturday, November 22 from 10:00am-noon.

Thanksgiving Sunday: Our Thanksgiving worship service will be held on Sunday, November 23 at 10:00am. Both our adult and "Kids Kwire" choirs will be singing some special songs. We will dedicate our pledge cards on that day, as well.

Gingerbread Bazaar: The ABWM will hold its annual Christmas fair on Saturday, November 29 from 9:00am-3:00pm. There will be Christmas crafts and decorations, baked goodies, a white-elephant table, and a corn chowder luncheon served from 11:30am-1:30pm.

Hanging of the Greens Worship Service: On Sunday November 30 at 10:00am, we will begin the Advent season by having a service of music and hanging of the greens. We will have a Christmas potluck luncheon after the service.

Toys for Tots: This annual project will start on Sunday, November 30. A Christmas tree will be put in the Church Narthex with tags decorating the branches denoting age, sex and wish list of the particular child. The toys are distributed with the Christmas food baskets in December. Please feel free to call the Church office if you wish to pick up a tag (938-5313).

Results of our Raffle: On Sunday, October 19, we had the drawing for the raffle we did at our multi-family yard sale. We are happy to report that the winner of a dinner for four at the Potter Place Inn in Andover, NH was won by Kathy Beals of Bradford.



the
Rolling Pin

*Everything to Make a Pie
but the Apples!!!*

Apple Peeler, Pie Plates, Apple Corer
Lemon Zester, Pastry Blender, Pastry Brush
Measuring Spoons & Cups, Flour Sifter
Mixing Bowl, Gourmet Pie Basket and
Of Course...A Rolling Pin!



Open: Tues.-Fri. 10-5, Sat. 9-5, Sun. 9-3

17 East Main Street • Warner, NH 03278
456-2590 • Fax: 456-2938



PIZZA CHEF

LUNCH SPECIALS ~ SUBS ~ PASTA ~ SALADS
ITALIAN DINNERS ~ CALZONES

"Delicious Pizza"

• Many New Items • Ice Cream • Beer & Wines

DINE IN OR CALL AHEAD
FOR TAKE OUT SERVICE

938-2600

Bradford Pizza Chef at the corner of Rte. 103 & Main ~ Bradford, NH

Obituaries

WINIFRED REEVES

TAMPA, Fla. - Winifred (Mulvey) Reeves, 86, formerly of Bradford, died Sept. 13 at home. She was a longtime resident of Bradford and Chatham, Mass. She worked as a registered nurse. Reeves was a devout Roman Catholic. She was an avid supporter of the American Red Cross and the Visiting Nurse Association.

Survivors include three sons, Ronald Reeves of Grantham, Albert Reeves Jr. of Hyannis, Mass., and Richard Reeves of Tampa, Fla.; a daughter, Winifred Reeves of Kasilof, Alaska; a brother, Thomas Mulvey Jr. of Fairhaven, Mass.; a sister, Jeanette Mahoney of St. Thomas, Virgin Islands; 11 grandchildren; and nine great-grandchildren.

Burial was held at Sunny Plain Cemetery in Bradford. In lieu of flowers, memorial donations may be made to LifePath Hospice, 3010 W. Azele St., Tampa, Fla. 33609.

SOPHIE BURKE

BRADFORD - Sophie Burke, of West Road, died October 25 at the New London Hospital. She was born in Manhattan, N.Y., the daughter of Nathan and Fannie (Baskin) Meyer. She worked for Borden's Co. in New York for many years and later for GTE Sylvania in Hillsboro for 25 years. She retired in the mid-1980s. She moved to Bradford in 1956.

Burke was a member and past president of the Bradford Women's Club and a member of the Women's Christian Guild and was active with the Bradford Community Senior Center. She was a Democrat and worked at the polls. She loved movies, theater and music and was an avid reader. She liked traveling around the area and trying out different restaurants.

Her husband, Richard Burke, died in 1976; and a brother, Philip, died previously. Survivors include five step-grandchildren; and many step-great-grandchildren.

Calling hours will not be held. Graveside services were held at Pond Cemetery in Bradford. The Rev. Lynne Hubley, pastor of the First Baptist Church of Bradford, officiated. In lieu of flowers, memorial donations may be made to Brown Memorial Library, Main Street, Bradford 03221.

CASSANDRA ANN JORDAN

BRADFORD - Cassandra "KC" Ann Jordan, 23, died Sept. 27. She was born in New London, the daughter of Peggy Hurd and Jeff Jordan. She attended Kearsarge Regional High School and was enrolled at the College for Lifelong Learning. She was involved with The Children's Learning Center at Mount Sunapee during the winter and Scott's Yard Care in New London during the summer. Jordan enjoyed nature, travel and following bands such as The Grateful Dead and Phish.

In addition to her parents, she is survived by her husband, Jim Lewis of Bradford; two sons, August Jordan and Banyan Jordan of Bradford; a sister, Carey Wheeler of Andover; a stepmother, Robin Jordan of Newbury; a stepfather, Dick Hurd of South Newbury; family friend Randy Dunphe of Chebeague Island, Maine; a stepbrother, Steve Hurd of Newbury; two stepsisters, Jessi Hurd of Orlando, Fla., and Tracy Hurd of South Newbury; two grandparents, Elsie O'Neill and Dan Bosworth; two uncles; three aunts; and many cousins.

Memorial donations may be made to the August and Banyan Education Fund, c/o Lake Sunapee Savings Bank, 9 Main St., Newport 03773.

New Bradford Phone Lists Available

The Bradford Area Community Center (BACC) Governance Board has prepared a new Bradford 938 phone list. The list will be available for \$5.00 at: Bradford Area Community Center's office, Bowie's Market, and Dodge's Store.

Proceeds benefit the BACC's community activities. The revised format features emergency numbers and Bradford town office hours. Businesses are highlighted. Containing all the 938 prefix numbers, it is an asset for everyone in the community and particularly for newcomers.

ENJOY THE NEW PHONE LIST.....

Phyllis Wilcox, Chair, BACC

From the "secret" recipe files of



Chef Jim Horigan
Thistle & Shamrock Inn

Apple and Cranberry Chutney

I know tradition calls for cranberry sauce (whole or jellied) for Thanksgiving dinner, but, this goes very well with turkey and it is excellent with pork. It also makes a great kitchen gift!

9 cups apples, peeled, cored & chopped
2 cups onions, chopped
1 cup dried cranberries or (2 cups fresh)
1 cup brown sugar
1 cup cider vinegar
1 Tbsp. curry powder
¼ tsp. cayenne pepper

Combine all ingredients, cook, stirring occasionally for 45 minutes or until tender and thickened.

Cool. Makes 1 quart.

Enjoy!

(If anyone has a question about, or problem with, any of my recipes, please feel free to call the Inn for assistance. JRH)



(603)456-2344 Office
(603) 456-2485 Fax
colbyre@colbyinc.com
www.colbyinc.com

Andy Thompson
REALTOR



Colby-Linehan
Real Estate, Inc.
11 E. Main St., PO Box 173
Wamer, NH 03278
Outside NH 1-800-282-7614

938-2315 60,000 BOOKS

Books by the Lake

Buying & Selling
Quality Used Books in Most Fields
Route 114 at Lake Massasecum
Thurs-Mon 10:00-5:30



Septic System Designs
Test Pits, Perc Tests
Site Assessments
Land Planning
Permitting

ROBERT C. STEWART, Jr.
938-2256 Main Street

KRSD Budget cont. from page 1

at the third grade level. It is important to note that the NHEAP test is designed to indicate whether or not the District's curriculum is aligned with the State Curriculum Frameworks. As explained by the professional educators we rely upon, student performance on this test is not meant to indicate what the particular student knows as compared to what other students know as is the case with the SAT test for example. The NHEAP test is designed to test each student's ability to demonstrate "higher order thinking skills" in problem solving and expression. Therefore, it is important for the community and educators to rely on other indicators, in addition to the NHEAP test scores, to get a complete picture of where our students stand in terms of personal and comparative academic performance.

The District has set long range goals that require significant improvements for large percentages of the student population by 2006. These goals were adopted two years ago. At that time, the School Board committed to work with the Administration to monitor progress toward the goals each year. This will enable us to understand whether or not the planned actions have occurred and are delivering the desired results. We are presently at such a juncture.

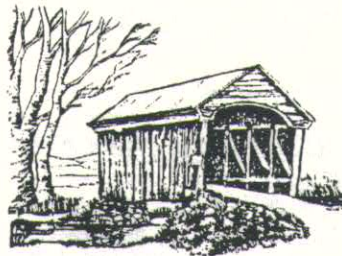
The third grade results at KRES Bradford were not acceptable last year. As significant and possibly more disturbing is

the three-year trend that indicates the issue should be considered something more than an anomaly. More needs to be done to ensure that students are taught what they need to achieve the results we expect from them.

The administration and faculty have prepared an action plan to address these issues. That plan was presented to the School Board on October 9. At that meeting, the School Board indicated that we would like to see the plan further developed to include some specific actions that are already in place in other schools in the District. We also want each action in the plan to include information on who is responsible for completing it, when it will be completed, and what measurement will be used to understand that the action is having the desired result. It is not acceptable to the School Board to wait until the next round of NHEAP test scores to know whether the strategies and actions are working.

We are justifiably proud of our students and our community schools. Each town in the District provides sufficient resources to our schools to expect strong results. Where additional resources are necessary, the School Board has required that the Administration make the case that existing resources cannot be redirected to support new initiatives before requesting additional funding. When additional funding is necessary, the School Board has required the Administration to present the case with sufficient details to indicate how we will measure that the investment has returned the results it was intended to achieve. The towns in this District deserve no less and have proven over time to be very supportive of the development and improvement of our schools. Thank you.

—Mark Fairbank, Bradford School Board representative to KRSD Board



DUMONT'S BARBER SHOP

Wednesdays 8:00–6:00

Main St.

Denis Dumont, Owner

KRHS Drama Club Presents *Once Upon A Mattress*



The Kearsarge Regional High School Drama Club will perform the musical production of *Once Upon A Mattress* November 21 and 22 at KRHS. Need a night out before winter sets in? Come and see this hilarious musical based on the story of The Princess and the Pea. Local actors will perform, the Earth Club will sell refreshments and KRHS senior Brittany Martell will be featured as Student Director. Written by Marshall Barer with music by Mary Rodgers (daughter of the famous Richard Rodgers), *Once Upon A Mattress* was written in 1959. Carol Burnette played the princess on the New York Stage.

Three KRHS students, Meghan MacLean, Kelsie Brook, and Jess Boyea choreograph the play. KRHS faculty member Ernie Mills is the Musical Director and Missy Owen is the Asst. Musical Director and accompanist. Deb Barton is the costume mistress, whose work has been seen on the stages of The New London Barn Playhouse and Colby Sawyer College. Senior Ian Locke leads the student tech crew of 10 in building and painting sets and running sound and lights.

As you can see, the talent here is overwhelming. KRHS faculty member and drama director Nancy O'Leary has been the technical director of the KAT summer shows for about 15 years. She has been the KRHS Drama Club director since 1994 and has been bringing our area marvelous shows since then. When asked about student director Brittany Martell, O'Leary explains: "Since she's a senior, Brittany was ready to direct a play. She went to an acting camp this summer and wanted to try directing. I try to nurture that. It's part of my job."

KRHS has been known for their fabulous productions such as *Grease*, *Oklahoma*, and *The Pajama Game*. *Once Upon a Mattress* is no exception. All ages will enjoy this hilarious musical spectacle set in a medieval castle. Bring friends and family when *Once Upon A Mattress* opens November 21 at 8:00pm in the KRHS Auditorium. Tickets are \$8 at the door for adults, \$4 for students. For information call Nancy O'Leary at KRHS at 927-4261.

Video Pursuit

Open 11 to 9 M-F

10-9 Sat/Sun

938-2111 • FAX 938-2453

DVD rentals \$3.00

All Old Movies only \$1.00!!!

Previously Viewed
Movies For Sale \$10



"Escape from your world;
watch a movie!"

Outside

by Ann Eldridge

Soon it will be All Soul's Day, Halloween, the Day of the Dead —when the veil between the worlds is thinnest. At this time in Mexico, in the state of Michuacan, monarch butterflies return. Here they are imagined as the souls of those who died young, returning for an annual visit. Orange marigolds and paper monarchs decorate the streets.

Few monarchs were found in Bradford this summer. Recent droughts in this, the north of their range, and an unusual freeze on their wintering grounds in 2002 set them back. Though recovering from the weather north and south, they must still survive larvacides in the cornfields and herbicided, traffic-blasted suburbanization in between.

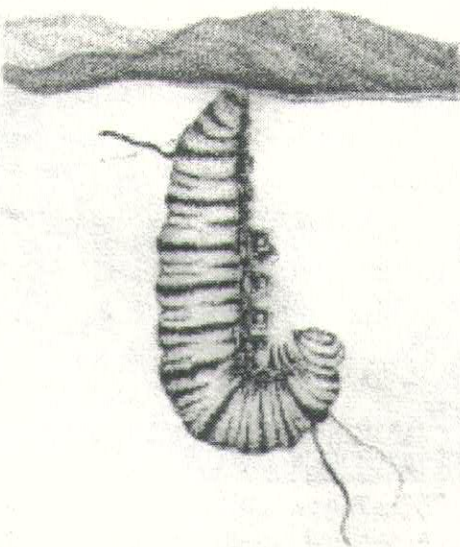
Older guidebooks state with confidence that these butterflies don't REALLY flap and glide all the way from Manitoba to Mexico, that they lay eggs along the way and leapfrog their generations south. That something so apparently fragile, nearly undetectable in weight, and consisting of naught more than powdered orange scales and black and white tufting over a framework of thread legs, tongue, and antennae could accomplish such a feat is unnerving. If we thought about it too long we'd feel a bit faint every time we passed a windshield-struck migrant.

But it's true. The monarch butterfly is perhaps the only long distance commuter bug on the planet. It wasn't until 1975 that the scientific community discovered what the local Mexicans always knew, that millions of monarchs cram into what amounts to a few square miles of tropical oyamel fir trees in the Transvolcanic Mountains of Mexico. In these specific places they sluggishly hang about until March when they begin to head north following the spring warmth and the specific plants they lay their eggs on—the milkweeds.

As milkweeds evolved toxins to prevent their consumption by bugs and herbivores, a few insects evolved an ability to tolerate the cardiac glycosides in the sap. For this they gained the bonus of relative immunity from their would-be predators by causing a nasty tasting illness. The viceroy butterfly, also evil-tasting from imbibing willow, bears such resemblance to the monarch that experienced birds are suspicious of anything dressed in orange and may advise their offspring as well. In the mountains of Mexico some orioles and grosbeaks

have taken advantage of the tempting millions by either adapting to tolerate the chemicals or by learning to carefully dissect before consumption.

Summer monarchs are behaviorally and biologically not quite the same insect as autumn monarchs. The butterflies mating their way north in the spring may live for 3-5 weeks at best, flying with an apparent solitary randomness. The last generation to eclose—or emerge from its chrysalis—leads what seems a more focused life that must last for 8 or 9 months. With determination they drink from one flower and move to the next flower due south. No longer loners, at night they roost communally, sometimes using the same site year after year. They no longer mate. Approaching an obstacle in their south-directed flight, they can soar to a height of thousands of feet.



There is a dilemma for those making a journey of thousands of miles and still landing with enough remaining fuel to make it through the winter. Monarch aeronautic authorities have puzzled over how an insect which, by nectaring as it goes and thus gaining abdominal weight, can still perform the necessary energy efficient soaring. The answer has to do with "differential ballasting" and "adjustment of wing loading" and the "optimal glide angle of 3.5 meters of forward movement for each 1 meter drop." The answer seems to be that water is taken on or expelled from the butterfly's crop at the fore to compensate for the weight in the aft.

The butterflies did not need grant money to figure this out but the trial and error process consumed thousands of post-glacial years. It is possible that the great North American monarch migration in the east may be largely a recent phenomenon due to colonial deforestation and the subsequent proliferation of milkweed. The concentration of monarchs may also have drifted eastward as the sod was broken in the Great Plains and less favored plants proliferated.

The migration of what is essentially a tropical butterfly is in effect a following of a food source. It is an alternative to metabolic diapause, which is what many of our year round resident butterflies do—hunker down in a safe place and hibernate.

To migrate with western monarchs, read *Chasing Monarchs* by Robert Michael Pyle, at the Brown Memorial Library.

November Calendar

MONDAY, NOVEMBER 3

Cemetery Commission, Town Hall, 10:00am
Library Trustees, BML, 7:00pm

TUESDAY, NOVEMBER 4

Selectmen, Town Hall, 5:00pm
Zoning Board of Adjustment, Town Hall, 7:00pm
Kearsarge Area Preschool Board Meeting, BACC, 7:00-9:00pm

THURSDAY, NOVEMBER 6

Bradford Economic Opportunity Committee, BACC, 7:00pm

MONDAY, NOVEMBER 10

Land Preservation Committee Meeting, BACC, 7:00pm

TUESDAY, NOVEMBER 11

Bradford Women's Club Board Meeting, BACC, 9:30am
Planning Board, Town Hall, 7:00pm
Kearsarge Area Preschool Parent's Meeting, BACC, 7:00-9:00pm

THURSDAY, NOVEMBER 13

Bradford Economics Opportunities Committee, BACC, 7:00

FRIDAY, NOVEMBER 14

Young Frankenstein movie, BML, 7:00pm

TUESDAY, NOVEMBER 18

Selectmen, Town Hall, 5:00pm
Conservation Commission, Town Hall, 7:30pm

WEDNESDAY, NOVEMBER 18

Parks and Recreation, Town Hall, 6:30pm

TUESDAY, NOVEMBER 25

Planning Board, Town Hall, 7:00pm

Transfer Station Hours

Wednesday, Saturday, & Sunday
10:00am-5:00pm

To list events for the December Calendar, please call Beth Rodd at 938-2692 or e-mail bradfordbridge@mcttelecom.com before November 20.

Children's Story Hour, Wednesdays at Brown Memorial Library, 10:30am

Bradford Historical Society, Old Post Office, open most Saturdays from 1:30-3:00pm or by appointment, call 938-5386

Emergency Numbers

EMERGENCY FIRE, POLICE & RESCUE TELEPHONE 911

Police non-emergency number 938-2522

Town Clerk and Tax Collector's office

OFFICE HOURS:

Monday: Noon-7:00pm
Tuesday: 7:00-11:30am, 12:30-5:00pm
Friday: 8:00am-12:00noon, 1:00-5:00pm

TELEPHONE: 938-2288, 938-2094



N.H. Fish and Game hunting season

The Fish and Game Web site has provided the following information regarding the current hunting seasons in New Hampshire. If you are not a hunter, it is useful to be aware of the various seasons, to be safe in the woods. With judicious wearing of hunter orange, we can all exist together in our beautiful back woods, whether hiking, trail biking, four-wheeling, horseback riding, or hunting.

For complete information, go to the Website, www.wildlife.state.nh.us/Hunting

2003 General Season Dates

Sept. 1 - Dec. 7	Black bear/dates vary according to method and WMU
Sept. - Jan.	Waterfowl/dates vary by species and zone
Sept. 27 - Sept. 28	Waterfowl/youth weekend
Sept. 15 - Dec. 15	Deer/archery
Sept. 15 - Dec. 15	Wild turkey/archery
Oct. 1 - Mar. 31	Small game/dates vary by species
Oct. 1 - Dec. 31	Pheasant
Oct. 18 - Oct. 26	Moose
Oct. 25 - Oct. 26	Deer/youth weekend
Nov. 1 - Nov. 11	Deer/muzzleloader
Nov. 12 - Dec. 7	Deer/firearms
May 3 - May 31	Wild turkey/archery and firearms



Classifieds

FOR SALE. Warner Wood Stove, 36"D x 20 1/2"W x 24"H. \$450 or BRO. Call 938-5933.

FOR SALE: Sears Heavy Duty electric dryer, not all cycles heat but very good. Probably needs a sensor. \$25.00 938-6362.

FOR SALE: Elna portable sewing machine, gd. condition. \$50 or BO. Ski Bag, used once. \$25 or BO. Call 938-2740.

FOR SALE: 1974 Chevrolet Cheyenne Super 20, 3/4 ton, camper special, auto, twd. Lively 454 big block, gd. condition. \$2800. Call 938-2303 after 6pm.

FOR SALE. Four studded snow tires 175/70R14 Wintermaster Plus tubeless steel belted radials driven only 10,000 miles. \$150. Call 938-2820.

FOR SALE. New solid brass fireplace enclosure screen and bi-fold glass doors, with top and bottom dampers. 35" long by 31" high inside and 42" long by 32" high outside measurements. \$50. Call 938-2820.

To place a FREE classified ad of 40 words or less: please call Carey Rodd at 938-2692 or e-mail bradfordbridge@mcttelecom.com.