

THE BRADFORD BRIDGE

COMMUNITY NEWS BY NEIGHBORS FOR NEIGHBORS

Volume 13, Number 7; Issue 145

July 2003

INDEPENDENCE DAY PROGRAM OF EVENTS



SATURDAY, JULY 5

- 7-10 am MASONIC BREAKFAST (St. Peters Lodge)
- 7:15 am 5K Road race Registration (Town Hall)
- 9:00 am 5K RACE BEGINS (Town Hall)
- 9:00 am FAIR OPENS
- 9:00 am LIBRARY BOOK SALE
- 9:00 am RED CROSS BLOOD DRIVE (Bradford Community Center)
- 11:00 am LITTLE RED WAGON (On Church side lawn)
- 11:30 am Luncheon Table Opens
- ICE CREAM SUNDAES (Served from the Fiske House Food Pantry)
- 3:00 pm Hand-Made Quilt Raffle Drawing
- 3:00 pm LINE UP FOR PARADE (Old Warner Road) & Post Office
- 3:30 pm JUDGING OF THE FLOATS
- 4:00 pm Independence Day Celebration Parade Begins: UNITED WE STAND. Starts at Rt.114 & Main St. Ends at the Appleseed Restaurant on High St.
- 5:00 pm MIDWAY OPENS-BROWN SHATTUCK FIELD; Chicken BBQ sponsored by the Community Center & the BBA. Vendors, Raffles, Children's Amusements
- 6:00-7:00 pm Bradford Country Squares
- 7:00 pm Music under the Tent with the BRADFORD BOYS
- 9:00 pm FIREWORKS (By Atlas Fireworks) Fireworks will not be shot off from the dump this year.

COME TO THE BROWN SHATTUCK FIELD FOR THE BEST VIEW IN TOWN



LETTVIN CHAMBER MUSIC SERIES

The Lettvin Chamber Music Series will be featured at the Bradford Center Meeting House on Friday evening, July 18th, and Saturday, July 19th at 7:30 PM. This will be number fifteen in a musical series that began when Betty Cilley, our longtime town clerk, invited Ted Lettvin to play a benefit performance at the Baptist Church on Main Street in the late 1980's. Every summer since that beginning this splendid tradition has continued in the bucolic setting of the Bradford Center Meeting House.

This will be the third year that the Union Congregational Society and the Bradford Area Community Center will be co-sponsoring the event. Although Ted Lettvin is living at Pleasant View Center in Concord, his wife Joan continues to bring excellent classical music and musicians to Bradford. Joan's wish is to establish a trust that will keep the series going in coming years.

This year the Friday, July 18th concert will feature a piano-cello duo. Joan explained that this duo, cellist Agnieszka Dziubak and pianist Olga Talroze, met in 1989 while attending the Boston Conservatory of Music. They enjoyed playing together so much that they formed a cello-piano duo. Both come from Eastern Europe and have similar backgrounds and interests. They share a passion for music and produce a unique blend of emotional and spiritual elements in their performances.



On Saturday, July 19th, James Winn and Ken Osowski will present a program of four-hand and solo piano music. James Winn is presently on the Piano and Composition faculty of the University of Nevada's music department. Dr. Winn has been a solo pianist with the New York City Ballet, and a frequent guest soloist with the Chamber Music Society of Lincoln Center. He is an active recording artist with many CDs featuring his piano artistry. James Winn began his piano studies with Theodore Lettvin when he came to the New England Conservatory as a freshman.



Ken Osowski is a doctoral candidate at the Peabody Conservatory of Music at Johns Hopkins University. He has studied with Dr. Winn at the University of Nevada. Mr. Osowski is currently on the faculty of York College in Pennsylvania where he teaches piano and music appreciation.

On Friday, July 18th, the cello-piano duo will perform Beethoven, Shostakovich, and Brahms. On Saturday, July 19th, the piano program will feature music of Mozart, Ravel, Chopin, and Schubert.



Tickets will be available at the Meetinghouse door on concert nights. Tickets for adults are \$8.00 and \$4.00 for children or phone 603-938-5373 for information.

Refreshments will be available at intermission.

Join the players for a wonderful evening of unforgettable music for one or both performances.

THE BRADFORD BRIDGE



P.O. Box 463
Bradford, NH 03221
Telephone: 603-938-2692
FAX: 603-938-2995
Email: bradfordbridge@mcttelecom.com

VOLUNTEER STAFF:

Bev Leo and Beth Rodd, Co-editors
Meg Fearnley, Assistant Editor
Carol Troy, Ad Manager
Debbie Lamach, Business Manager
Carey Rodd, Classified Ad Manager
Diane Planchet, Proofreader
Vern & Marion Hall, Subscriptions
John & Elinor Robie, Distribution
Gene Schmidt, Distribution
Milly Kittredge, Archivist

Subscription Information

For those wishing to receive the Bradford Bridge by mail, the annual subscription price is \$12 to cover the cost of mailing. To subscribe, please send a check to the address above.

Advertising

The Bradford Bridge is a free community newspaper supported by advertisers. To place an ad, call Carol Troy at 938-6186 or send a FAX to 938-2995. Ad deadline is the 20th of the month.

Submissions

The Bradford Bridge is written by neighbors, for neighbors. Anyone is welcome to submit articles and/or photographs of interest to the community. The Bridge reserves the right to edit submissions for length or content. Send articles or letters to Beth Rodd/Bev Leo at the address, FAX number, or e-mail address above by the 20th of the month.

HENNIKER VETERINARY HOSPITAL

PROFESSIONAL ASSOCIATION
Small Animal & Equine Practice

Alyssa J. Brust D.V.M.
Robert A. Brust D.V.M.
Jill R. Patronagio D.V.M.

24 Hour
Emergency Service
House Calls Available

Henniker,
New Hampshire

603-428-3441



Piano Recital

June 14th dawned sunny and beautiful, a wonderful day for the nine students to display their skills. Phyllis Wilcox and her students played to an audience of about 40 parents, siblings, and guests, at 1 pm in the Senior Room at the Bradford Area Community Center.



Pictured is Heidi Eisenberg, nine years old, from Henniker. Heidi and her teacher, Ms. Wilcox, also played a duet.

Major League Soccer Camp

There is still time to sign up for Major League Soccer Camp. It's happening in Bradford, from August 11-15. Half-day camp is available for children grades 1-4. Full-day camp is also available for children grades 5 and up. Also, there will be a camp for Nippers, grades K-1, if there is enough interest. MLS Camps is the official camp of Major League Soccer, the nation's premier professional league. Coaches, primarily from Great Britain, bring loads of energy, humor, and skills to the playing fields in Bradford. For registration forms or more information, please call Diane Gadoury at 938-2482 or Debbie Bruss at 938-2979.

George's Mills Ladies Aid Society

The George's Mills Ladies Aid Society holds its 106th annual Church Fair on Wednesday, July 30 at the United Methodist Church, 7 Prospect Hill Road in George's Mills. Join us from 9:00am until 2:00pm (no early birds, please). The fair will feature a food table, handcrafts, books, a cookie walk, a children's table, balsam pillows, white elephants, and a silent auction.

—Marge Gardner

LINEC July Courses

LINEC (Learning Institute at New England College) has some blockbuster courses beginning July 17 and continuing through July 24. All eight courses are offered for \$10, plus a modest membership fee. Enjoy one or more of the following. There are no exams and no pressure.

Visualizing Irish History taught by Ruth-Ann Harris will take you through Ireland's rich history.



Are International Assistance Programs a Waste? taught by John R. Harris will explore whether international aid programs have been effective.

The Summer Reading Group will tackle *Ulysses* by James Joyce with a video lecture and discussion led by Janet Quinn and Paul Hague.



Geographic Transformation and Economic Space—America in the Nineteenth Century is taught by Gordon Riedesel. As America industrialized in the 19th century, physical landscapes and structures of society were transformed.

Japanese Gardens taught by Sachiko Howard will study the history and principles of Japanese garden design.

Laughs in the Libretto taught by Helen Blakelock will explore the ways that opera can be funny!

More Food Issues taught by Beatrice Trum Hunter will be a discussion of current trends and controversies about "healthy food" and what is truly nourishing.



Practical Computer Use will be taught by Beverly Leo. Registration will be limited to the first ten enrollees.

In addition, "Wednesday Afternoons with the Arts" presents a special series—"Life of the Craftsman in New Hampshire." This series is available to members and non-members at the NEC Gallery from 1:00-3:00pm. And to wind it up, August 6 will be LINEC Day at the 70th Annual Craftsmen's Fair at Sunapee State Park with free passes available to LINEC members. LINEC is sponsored by New England College and is a member of the Elderhostel Institute Network. For a complete course booklet and registration information, contact the Registrar at Box 75, New England College, Henniker NH 03242.

★ ★ ★ ★ ★ ★ ★ ★

Rural Community Preservation Update

The still-unnamed ad hoc rural community preservation group held a second public meeting on June 19. After brief comment on the progress of the Federal Pillsbury-Sunapee Highlands Project and other updates, the meeting was given over to a presentation by Carol Foss from the Minimum Impact Development Partnership. The mission of this organization is to help communities grow without losing their essential character, be it "wild," as in some of the most northern townships, "working," "rural" (Bradford's current status), "village," "suburb," "small city", etc. She outlined the method they have developed which is to map the existing infrastructures of a community and then work with any potential conflicts that are uncovered. They identify three types of infrastructure:

1. Built, meaning the constructed elements that transport and shelter people, goods and information—commercial districts, compact housing.

2. Social, the opportunities and places within a community for organized and informal social interaction - recreational areas, historic sites, community centers, churches.

3. Green, the natural life support system of interconnected lands and waters upon which human life and economic activity, as well as other forms of life, depend.

Obviously, there are overlaps. The transfer station, post office, and library can be social gathering places as well as places of commerce and information gathering. Hiking trails can be social as well as wildlife areas.

The main goal is to encourage development where it makes sense and minimize it where it doesn't. Other organizations in town are working to the same ends and a mutual exchange of information will be important.

The next meeting will be held July 23rd at the Bradford Area Community Center at 7:00pm.

Frank Mitchell from the Cooperative Extension's Community Conservation Assistance Program will be there to outline how other towns have organized efforts, raised funds, applied for grants, and disseminated information to interested landowners and developers. People of all interests are encouraged to attend.

News from the Town Clerk and Tax Collector's office

June 11, 2003 Jonas "Estrid" Cosgrove died in New London.

June 12, 2003 Mary "Betty" Moore died in New London.

June 14, 2003 Ruth Bibbo died in Natick, Massachusetts.

Starting July 1st there will be a \$2.00 late penalty for each dog egistered.

Dogs registered from now on will have to be licensed through the Police Department.

The 1st 1/2 tax bills will be due on July 1st. After that date they will start accruing interest at 12%.

Town Clerk/Tax Collector's Office: The offices will be closed on July 4th for the holiday.

OFFICE HOURS:

Monday: Noon-7:00pm

Tuesday: 7:00-11:30am, 12:30-5:00pm

Friday: 8:00am-12:00noon, 1:00-5:00pm

TELEPHONE: 938-2288, 938-2094

Parks and Recreation

We welcome two new members Heather Cooper and Jess Noury.

The Blood Drive will be held once again at the BACC on July 5, starting at 9 AM. Look for the Bloodmobile out front.

Paint a Pic in one day will be at the BACC on July 26. For information call Margaret at 938-5392.

Red Cross Swim Lessons start Monday July 7, call 938-2570 for information.

Watch for our Bradford Batonettes in the Independence Day Parade. They have worked very hard again this year to put their routine together.

Rock Maple Nursery

Flowers - Potted Plants - Shrubs
Perennials - Bark Mulch - Wood
Snow Plowing
Open Year Round

Debbie & Charlie Spaulding
(603) 938-5955
Jct. 114/103
Bradford, NH

Henniker Farmer's Market

You will find everything you need to complete your summer table, and unique handmade crafts, at the all-new Henniker Farmer's Market. Among the items for sale are fresh local fruits and vegetables; fresh, dried, and edible flowers; honey and other bee products; homemade dog biscuits; maple syrup; free range eggs; dairy and locally produced pork and chicken; fresh goat's cheese; handmade soaps; freshly baked organic goods; and too many lovely crafts to mention.

Opening day is Wednesday, July 2 from 3:00-6:00pm in the park in front of the old Masonic Hall on Main Street, Henniker. There will be entertainment. Call Liane Tyrrel at 428-7490 if you are interested in becoming a vendor or would like to help organize this event.

Bradford \$1.5 Million



With the sad loss of Big Joe comes more change. Battles Farm, a wonderful, beautiful Bradford treasure is for sale. The property consists of approximately 170 rolling acres w/ mountain views and both a stream and a town road going through it. It includes an enormous old farmhouse, a barn, silo and other outbuildings, plus gardens. The business and 5 acres will be subdivided off and kept in the family. Please contact our office for further details.

Ann C. Hallahan Real Estate

Route 103 / At Covered Bridge, Bradford
938-2020 Web page: heartofsunapee.com
E-Mail: coveredbridge@conknet.com



CRICENT'S
M A R K E T
Quality - Service - Integrity

New London
526-6951

Fresh Meats
&
Produce
Fresh Fish
Fresh Deli Items

927-4973 Route 114
North Sutton

ALL & AWL REPAIR

Small Engine Sales & Service
Tractors • Harness & Tack Repair
Art, Kirk, Lynne & Kris Chadwick
Hours: Mon-Fri 7:30-5:00, Sat til 1:00

SUTTON



New to be built ranch with three bedrooms and a nice comfortable layout. Local contractor with experience to build quality yet affordable homes. Photo is of a similar home already sold and built this year nearby. The location is going to be on Mastin Road and there will be a lower level walkout basement.

\$165,000

ELLIOT HANSEN ASSOCIATES
◆ A REAL ESTATE COMPANY ◆
603-763-9999



Letters

We are quite pleased that the *Bridge* will continue. I am a life-long summer resident of Massacum and have enjoyed the *Bridge* as a way of keeping in touch (I have every issue)! We wish you well in this endeavor.

David B. Gaudes, Sr.

To all the volunteer staff of the *Bradford Bridge* and especially to Lyn Betz and her new replacements, I have never heard of or seen any other monthly local paper that was published by volunteers. The *Bradford Bridge* is also, by far, the best publication of its type I have ever seen. What more can I say except thanks again to each and every one of you!

Howard A. Stockwell

Bob and I would like to thank the town for supporting our son Craig during these hard times of war. To update everyone he is still in Baghdad and as of this edition, he is due to return in September. He has been over there since November of last year. We have seen the "Craig Lites" around town and thank everyone for their support. We would also like to thank the Bradford Women's Club, and all the people behind the making of the "Support the Troops" sign in the BWC's garden. It came out beautiful and elegant. When Craig does come home, we will let you know! Just pray him home!

Thanks again, Bob and Tracy Foor

The New London Hospital Auxiliary's mission is to provide support through fund raising and special events. Over the years the Auxiliary has been the major fundraiser for the New London Hospital, Clough Center and Newport Health Center renovations. They have provided scholarships for local high school seniors and New London Hospital employees furthering their careers in health care services. They have provided continuation of dental care and prevention for area elementary school children through the Rock Dental Clinic.

On June 4, the Auxiliary will inaugurate a Cash Raffle to benefit the New London Hospital. Only 300 tickets will be available for sale at \$100 each. The winning ticket, drawn during New London Hospital Days festivities on August 1, is worth \$10,000. The winner does not have to be present. The Hospital will receive up to \$20,000 for equipment and services. A raffle ticket can be purchased in a variety of combinations: one person for \$100, two people for \$50 each, five people for \$20 each and ten people for \$10 each. There are lots of winners in this raffle: the lucky ticket holder, the New London Hospital, and the people who take advantage of the best critical care hospital in the region. We hope that your readers will partake in this worthy cause. Ticket coupons are available by calling 763-9880 and posters containing the ticket coupons will be located throughout the region.

New London Auxiliary

We continue to look forward each month for each issue of the *Bradford Bridge*, they bring back many happy memories of Bradford where I grew up and lived until enlisting in the United States Air Force in January, 1961. Both of us visit Bradford every year and hope they re-open the Birch Lane Lodges and Motel where we spent our vacations. We wish to convey our best wishes to Lyn Betz for her outstanding editorship of the *Bridge* during the past several years—and welcome the new members of the *Bridge*, Beverly Leo and Beth Rodd. May God bless you all, always.

Charles & Geri Page

Friends Sponsor Children's Summer Reading Program

The Friends of Brown Memorial are sponsoring a free 2003 Summer Reading Program, *Reading Rocks the Granite State: The Age of Dinosaurs*, at the library in Bradford on Wednesdays in July at 10:30am for children ages preschool through age nine. Certificates for children's reading accomplishments will be awarded to all participants on the final Wednesday, July 30. In one-hour sessions, workshop leaders will read stories and guide hands-on arts and crafts activities.

New Hampshire author Debbie Bruss kicks-off the program on July 9, followed by Denise Fairbank (July 16), Lyn Betz (July 23), and Sarah Harvey (July 30). Heather Cooper will guide preschool arts activities. A special collection of books on dinosaurs is being lent to Brown Memorial Library for the reading program. The handicapped accessible library is located at 78 West Main Street, Bradford. Pre-registration is not required. For more information, call Librarian Meg Fearnley at 938-5562.



—Audrey Sylvester

NEWBURY RECREATION AREA GETS WETLAND APPROVAL

On June 5, New Hampshire's Department of Environmental Services Wetlands Bureau notified the Town of Newbury of their approval of a recreational master plan for the property known as Fishersfield. Wetlands Bureau approval, the result of a long effort by Newbury's Parks and Recreation supporters, represents a tremendous achievement. Harry Seidel, Parks and Recreation Director, credits Brenda and Doug Sweet and their staff at Bristol, Sweet and Associates, as well as David Marceau of Marceau Environmental Consultants, for the thorough work they did together to produce both a comprehensive and convincing application.

The Velie Family is committed to helping raise funds to build recreation fields and a nature center to memorialize Currie-Hill Velie and her two sons, Joe and Jack, who were tragically murdered in Florida last September. The town originally purchased the Fishersfield property in 1998.

The Town of Newbury's approval of the Master Plan at the March Town Meeting was contingent on Wetlands Bureau approval. In the Plan the educational potential of Fishersfield will be emphasized through the Velie Family Recreation Area Nature Center where visitors can learn about the importance of wetlands and the beauty and intrinsic value of the natural landscape.

Velie Family Fund Benefit

ODDS BODKIN benefit Saturday, August 2, at 2 PM at Colby-Sawyer College. The show is A POCKETFUL OF MIRACLES and it's splendid. All proceeds will benefit the Velie Family Fund, Inc. and will be used to develop the Velie Family Recreation Area at Fishersfield in Newbury.

New Painting Exhibit Opens at Brown Memorial Library

An exhibit of paintings and drawings entitled, "Paradise Found", by Lake Blaisdell summer resident Carol Belliveau, opens on July 5 at Brown Memorial Library in Bradford. A "Meet the Artist Reception" will take place on Monday, July 14, from 6:00 to 8:00PM. Belliveau describes her paintings as a celebration of the pleasures of summer, nature, summer creatures, sunshine, and water. "My approach to painting is playful, experimental, and reflects my many years of teaching preschoolers." Her work consists of acrylic paintings; paintings on glass and oil pastels used with a variety of multi-media and found materials.

The handicapped accessible Brown Memorial Library is located at 78 West Main Street, Bradford (near the intersection of Route 103 and Main Street next to the church). The "Meet the Artist Reception" is open to the public. Refreshments will be served. The exhibit may be viewed during regular library hours, Monday, 10:00am-8:00pm, Wednesday, 10:00am-7:00pm and Saturday, 10:00am-3:00pm. For more information, call 938-5948.

—Audrey Sylvester

Bradford Country Squares

The Bradford Country Squares will host a Casual Dress Square Dance at the Bradford Town Hall on Saturday, July 19. Matt Auger will call A1 from 7:00-8:00pm and Mainstream/Plus from 8:00-10:30pm. Beverly Boudreau will cue the rounds. The theme is "Peel Off for Summer." Admission is \$5 per person and includes refreshments. For further information, call Bob Trombley at 763-3044. Spectators are free and always made welcome.

—Bob & Shirley Trombley

DUMONT'S BARBER SHOP

Wednesdays 8:00-6:00

Main St.

Denis Dumont, Owner

Custom Designed Jewelry

Spirit of New England
Jim Papuga—Goldsmith



The Angie Ring

14k yellow gold with blue sapphires and diamonds

Member of the League of NH Craftsmen

By Appointment Only • 938-2901

Thistle and Shamrock Inn & Restaurant

11 West Main Street, Bradford, NH
03221

"Bed and Breakfast Accommodations"

Casual Gourmet Dining
5:30 to 9:00 p.m.

New Menu Items

The dining room is open to the public for dinner, nightly,
from 5:30pm
Reservations appreciated

938-5553

(Closed Mondays and Tuesdays)

938-2315 40,000 BOOKS

Books by the Lake

Buying & Selling

Quality Used Books in Most Fields

Route 114 at Lake Massasecum

Wed-Sun 10:00-5:30



Septic System Designs
Test Pits, Perc Tests
Site Assessments
Land Planning
Permitting

ROBERT C. STEWART, Jr.
938-2256 Main Street

WALCO MECHANICAL CO.

REFRIGERATION, HEATING,
AIR CONDITIONING, ELECTRICAL CONTRACTORS
COMMERCIAL • INDUSTRIAL • RESIDENTIAL
SERVICE • SALES • INSTALLATION
MAINTENANCE PROGRAMS

SYSTEM EVALUATIONS

938-2926

BRADFORD, NEW HAMPSHIRE

Country Spirit

RESTAURANT & TAVERN

"In the only Henniker on earth"

Jct. Routes 202, 9 & 114.
Henniker, NH 03242

428-7007

OPEN
SEVEN DAYS A WEEK

Sun—Thurs 11am-9pm

Friday & Saturday 11am-10pm



Library Lantern by Meg Fearnley

The Library will be open on Saturday, July 5, and to celebrate Independence Day we are holding another book sale from 9:00am until 2:00pm. Enter at the Church Street lower level. We will also be represented in Bradford's Parade later that day at 4:00pm. Please keep your

heckling to a minimum!

Join us on Friday, July 25 at 7:00pm for a discussion of Gerald Durrell's book *My Family and Other Animals*. This book is a humorous look at a British family living on the Greek island of Corfu from 1935-1939. The author writes, "My childhood in Corfu shaped my life. If I had the craft of Merlin, I would give every child the gift of my childhood." Copies of the book are available at the library.

On a sad note, former Brown Memorial Library Trustee Ruth Bibbo died on June 14. She was the library treasurer for many years. Her family has kindly established a memorial fund at the library for the purchase of children's books. Ruth's family has our sincerest condolences.

See related articles in this copy of the *Bradford Bridge* on the Yogurt Poets, the Summer Reading Program, and a new art exhibit all at Brown Memorial Library in July.

Here is a list of some of this month's new books at your library:

For adults:

The New York Times Parent's Guide to the Best Books for Children by Eden Ross Lipson
The Wandering Hill by Larry McMurtry
A Summer in the Country by Marcia Willett
A Body to Die For by Kate White
From The Cook's Garden: Recipes by Ellen Ogden
Dead Ringer by Lisa Scottoline
The True Account by Howard Frank Moshier
Say When by Elizabeth Berg

For children:

Varjak Paw by S F Said
It's a Hummingbird's Life by Irene Kelly
A Day in the Life of Murphy by Alice Provensen

**NEW LIBRARY HOURS:**

Monday, 10:00am-8:00pm
Wednesday, 10:00am-7:00pm
Saturday, 10:00am-3:00pm

StoryTime Wednesdays 10:30

Telephone: 938-5562

email: brownml@conknet.com



Carpet ♦ Vinyl ♦ Ceramic Tile ♦ Hardwood ♦ Area Rugs

NEW LONDON ♦ FLOORCRAFT

and *Creative* ♦ *Kitchens*

Carl & Gail Olson
Route 11, Wilnot

526-2600
800-870-4646

JOAN LETTVIN

Joan Lettvin was recently honored in Ann Arbor, Michigan, where she founded the Great Lakes Performing Artist Associates (GLPAA). This is the same Joan Lettvin who masterminds the Lettvin Chamber Music Series every summer. The GLPAA recently celebrated its 25th year of operation, and Joan, who recently turned 80, went out to Michigan to be honored and participate in the event.

Joan explained that the idea for this type of an organization arose from a remark by her husband, Ted Lettvin, in the early 1970's. Ted thought that he should stop teaching since there really was no performance area for his students who were training for the concert stage. The big management apparently left little room for the new artists, devoting their efforts instead to the more established performers.

Joan took a Harvard Arts management program. As the wife of a performing concert artist, she decided to start "The Performing Artists of New England" in 1974. In the beginning she worked out of her kitchen using a recipe box. The idea of a nonprofit organization that would showcase the artists of a region for the audiences of the region was so successful that, when

she and Ted moved to Ann Arbor a few years later, she did it all over again and founded the Great Lakes Performing Artist Associates.

GLPAA has continued along this path for 25 years. Joan began the process which has carried on and promoted the careers of many aspiring talents in the world of the performing arts with vocalists, pianists, instrumental soloists and ensembles, and dancers. The roster continues to be very impressive.

When Joan and Ted returned to Bradford during the summer months, she again used her expertise to bring these talented performers to the Bradford Meeting House.

Joan Lettvin knows where the performing artists are and has brought them to the Meeting House stage for fifteen years. We are fortunate to have Joan in Bradford, and we congratulate her on the recent honor that she received.

So we too celebrate Joan in Bradford and look forward to the 15th Lettvin Chamber Music Series this July.

Phyllis Wilcox

www.merrimackfarm.com

PERKY-PET BRAND

THE WIDE MOUTH
HUMMINGBIRD FEEDER



Merrimack Farm
& Country Store
Main Street, Bradford, NH
(603) 938-2211



MTC Appliance Repair
AUTHORIZED SERVICE
OF ALL MAJOR BRANDS
Boscawen, NH
753-4446 / 248-3654—PAGER
Email: mtc@totalnetnh.net



YOUR FRIENDLY
PHARMACY
499-3454



APPLESEED RESTAURANT

When it's hot outside
it's always cool in our
air-conditioned dining room

"WHERE FAMILY AND
FRIENDS GATHER"

We will be closed Friday, July 11 and Saturday, July 12
Tuesday—Saturday 5:00—9:00pm, Sunday 9:00am—noon, 5:00—9:00pm
Route 103, Bradford, NH * Member, Bradford Business Association * 938-2100



Bradford Excavating, Inc.

Bradford, New Hampshire
Complete Site Work:



Rock & Stump, Foundation, Septic,
Road Construction, Fill, Stone Retaining Walls
Servicing Bradford, Warner, Sutton, Newbury, Henniker and surrounding towns.

Fully Insured, with many years of excavating experience

938-5664

Paul Gross, Joe N. Battles, Bruce Rubchinuk

BRADFORD



This 3 bedroom home in Bradford has a beautiful setting on the edge of the West Branch Brook, 2 Car garage with glassed in breezeway with wood stove. Great starter home or vacation home\$129,000

**STEWART
AGENCY**

Main Street, Bradford
938-2255 or 938-2256



Conservation Commission Notes

Dr. Deb Dunlop, Professor of Biology at New England College, once again graciously made herself available to take an interested group on a guided tour of the Bradford Bog on Sunday June 8. Much of this conservation land was donated to the Town by the New England Wild Flower Society in 1971. This rare inland Atlantic Cedar swamp and quaking bog is located about three miles out on East Washington Road in the southwest corner of town. Many unusual geographical and botanical features were discussed. There is a sometimes-slippery boardwalk, observation tower, and a pamphlet for self-guided tours.

A new "Bradford Pear" tree has been installed at Lafayette Park. It will keep company with the bonsai pear, which was unfortunately situated too close to the zealously plowed edge of the sidewalk. Lafayette Park is located at the corner of route 114 and Main Street, currently the location of a bus stop. This is the site where, in 1825, the great General Lafayette paused at the Raymond House, an inn that was destroyed by fire some time later.

Bradford Board of Selectmen

Bruce Edwards, Chairman

Peter Fenton

Dave Pickman

Cheryl Behr, Administrative Assistant

Office Hours:

Monday–Thursday, 8:00am–noon,
1:00–5:00pm

Friday, 8:00–noon

Telephone: 603-938-5900 • Meetings
1st & 3rd Tuesdays, 5:00pm



Real Estate Hints:

Industry News & Trends

by Laura Hallahan

Interest rates have dropped yet again, and while the market remains strong, the recent bad weather has been a big factor in a slower start to the usual hot selling season in our area. Along with praying for sunshine, this month I share a few interesting tidbits:

- While towns and counties across the country are increasing minimum lot sizes as a way to control growth, an Urban Land Institute fellow warns that such changes simply move development elsewhere. This in turn worsens sprawl, drives up land and home prices, shrinks open space, and boosts property taxes. A better solution is to tie new growth to existing areas and systems instead of building new roads or installing new sewers. Developers oppose minimum lot requirements because of the cost and the fact that many homeowners want smaller yards & less maintenance.

- Real estate has emerged as an increasingly popular investment among Generation X-ers, those consumers between the ages of 22 and 36. In the last year, they have curtailed their investment in securities and mutual funds and have put more of their personal funds into real estate. Another trend shows that single women accounted for 18 percent of first-time homebuyers in 2002, double that of single men. An increasing number of single women are making home purchases because they view home ownership as a safe investment and have better access to mortgages than in the past. They also undertake more extensive home searches and make up nearly half of all condominium owners due to the ease of maintenance and the other amenities found in condo living.

- Mold is a big issue these days, and, while it is more predominant in southern states, it can be found anywhere. There are two new products that resist mold and mildew, and sales are strong despite the high price tag. Humitek is a drywall with a biocide that is a safeguard against mold and mildew. Once installed and finished it resembles traditional drywall. DensArmor Plus is another product that keeps moisture away with inorganic glass fibers. As these and similar products are introduced to the market, prices should come down. Even with these products, the key is to protect materials and equipment from the elements during the building process.

- If there is a downside to all the so-called McMansions people have been building on tiny lots in towns across the country, it is the decorating dilemma. Many of these residences have no interior walls to break up the foyer, living room, and dining room. These expansive spaces can be difficult to decorate because traditional furnishings are too small and can get lost in the vast amount of space. Interior Decorators say the key is to blend scale, color, and light. Large-scale furniture, tapestries, and paintings mixed with the use of bright colors and low-hanging ceiling fixtures can create a more cozy feeling. Another idea is to divide the room in sections and decorate each section differently.



McPuter

Mike Pugliese—Owner/Technician

Located in the R.L. Dodge Building

102 E. Main St., Bradford, NH

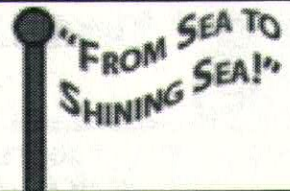
mpugliese@conknet.com

(603) 938-2701

Guaranteed Computer Sales & Service
Repairs & Upgrades Our Specialty!



YOUR LOCAL INTERNET
ACCESS PROVIDER



**Serving Bradford, Henniker, Hillsboro, Newport,
Sunapee, Sutton, Warner, and Washington**

107 E. Main Street in Bradford 938.2127

Legislative Report

By Representative
Barbara Conner French



I recently had the honor and privilege of working with about twenty other people to judge the 5th grade students of Beth Spaulding and other students. They worked on a project of the Center for Civic Education, funded by the U.S. Department of Education through an act of Congress that was established in 1987 under the Commission on the Bicentennial of the United State Constitution.

The project is called "We the People ... The Citizen and the Constitution". The lessons are designed by the students, the next generation of American citizens. The purpose is to gain an understanding of the background, creation, and subsequent history of the unique system of government brought into being by our Constitution. At the same time the program will help the students understand the principles and ideals that underlie and give meaning to the Constitution, a system of government by those governed.

The Preamble to the Constitution of the United States reads: "We, the People of the United States, in order to form a more perfect Union, establish justice, insure domestic tranquility, provide for the common defense, promote the general welfare, and secure the blessings of liberty to ourselves and our posterity, do ordain and establish this Constitution for the United States of America."

I was elected to carry out my constitutional responsibility. This week we voted on the state's budget for the next two years. I'm sure you are aware of the struggle the House, the Senate, and finally the Conference Committee went through to achieve a compromise and a final product. This budget:

1. Requires the Commissioner of Education to redirect \$5 million in Title I funds in FY '04 into testing and to reduce the budget by \$2.4 million in '05;

2. Leaves funding for the Land and Community Heritage Program (LCHIP) at \$250,000 for administrative costs and grants amounting to \$500,000 per year for the purchase of land only;

3. Maintains level funding for Medicaid Medical Provider payments.

The alternative would be much worse. If you remember, the House ended up with three budget possibilities, "A", "B", and "C". The "B" budget is basically what we have ended up with coming out of the Conference Committee. The "C" budget, which the House initially passed in April, actually eliminated much more and is what we would end up with if the compromise budget isn't passed. I did vote for the compromise budget, as I could not have lived with myself knowing what would happen to my constituents! This is not really an adequate budget; the population has increased, needs

change, people are going through difficult times and, as the Preamble says, I am elected to promote the general welfare.

I should add that the education funding mechanism that was passed this week and for which I did not vote will reduce state support for public education by \$142 million over the biennium. Education costs are not going to decrease; therefore the local property tax will have to be increased to maintain the appropriate level of funding for quality education.

Does this mean that I'm satisfied with the way we've resolved our budget dilemma? Of course not! I will continue to fight for a responsible, reliable, fair, long-term revenue solution to our budget problems.

Actually, as I write this, we have received the Governor's Budget Veto. I hope we are able to override and not have some disastrous results.

Thanks for your continued support. Please feel free to contact me about any concerns you might have at 428-3366. Enjoy the summer!



SUMMER, AT LAST!

We are enjoying the yard, walking, bird watching, food cooked on the grill, shade, iced tea. Join our family.

Foxchase, Assisted Living
Rt. 114, P.O. Box 620
South Sutton, NH 03273
(603) 938-5111

We're NOT just another convenience store...
WE ARE A TRAVELER'S COMPANION:

WANT ENTERTAINMENT?

We rent VIDEOS (New releases \$3, old movies \$1)



Wishing everyone a
Happy 4th of July!

FORGET SOMETHING? We probably have it at...

Cobble Pond Farms

Groceries • ATM • Beer & Wine • Lottery • Gifts
Sodas • Snacks • Sandwiches • Auto Supplies
Newspapers & Magazines • Toys • Gas, Diesel &
Propane

938-2662

Rte. 103, Bradford

OPEN SEVEN DAYS! 6:00am-10:00pm



Art & Music Events at The Fells.

For more information please contact The Fells at (603) 763-4789
Main House Gallery, The Fells, Route 103A, Newbury

Shadows & Light: Landscapes by Melissa A. Miller Through July 20.

Evocative landscapes of the White Mountains and other New Hampshire scenes, rural and urban, by this popular Concord artist. Presented by McGowan Fine Art, Concord.

Bright & Beautiful : Paintings by Jennifer Hansen July 26 through Sept. 1

Jennifer Hansen of New London works in oil and pastel to create landscapes with vibrant color.

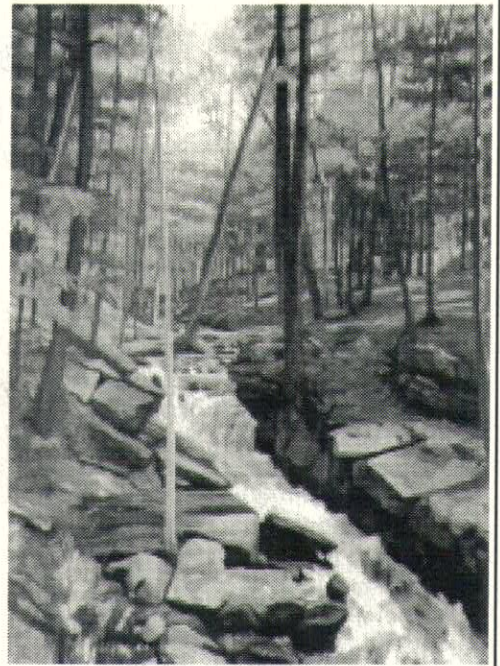
Jennifer Hansen: Opening Reception Friday, July 25 • 4 to 6 p.m.

Meet Jennifer Hansen, a New London artist with a growing reputation, and enjoy the selection of landscapes and still lifes for sale. Exhibit runs through September 1.

Poets on the Porch Sunday, July 27 • 2:30 to 4:30 p.m.

Readings by local poets and a special presentation of little-known works of three generations of the Hay family. This event is part of the "Afternoons in the Garden" series.

\$5 adults, \$2 children, members free.



Melissa A. Miller:
"Chesterfield Gorge from
the Bridge" (oil, 36x26)

Bradford Historical Society

William Copeley, head librarian at the NH Historical Society Library will talk about the information to be found at the Tuck Library in Concord. Before Bradford had a building for artifacts, or a Historical Society, many local items were given to the State to be kept safe and to be available for research.

Mr. Copeley will share some of our local history to be found in the archives as well as present an overall look at research opportunities at the State Historical Society. The program is free and all are welcome. It will begin at 7:30 at the Old Post Office building and refreshments will be served.

TOP LINE

Complete Chimney Service

Rebuilding • Flashing • Cleaning
Stainless Liners • Masonry

Quality and Clean Work
Yrs. Experience

References Available

Reasonable Rates • Fully Insured

(603) 763-7385

Todd Longley

CLIMBING—CLEARING—PRUNING

TREES UNLIMITED

HOUSE LOTS • VIEWS • BACK YARD LOGGING
PROBLEM TREES • STORM DAMAGE • TRUCKING
SPRING CLEANUP • DRIVEWAY REPAIR

CALL CHARLIE SPAULDING

938-5955



STONERIDGE FARM



Opening Wednesday, July 2

Stop by and check out our
**Fresh Organic Produce,
Herbs, and Cut Flowers**

Open Wednesday through Sunday 10-6

Directions: From Route 103, turn right onto Center Road
and cross the covered bridge, follow for one mile
and turn right onto Cressy Road.

330 Cressy Road, Bradford

A Note From The Bradford Rescue Squad

Our town is very fortunate to have an ambulance. The Wise family of Bradford was key in getting one of the original ambulances, which served Bradford up to the early 1990's. Many years of fund raising came together to afford the most recent "rig" which was purchased in 1994. With this asset, Bradford Rescue is able to service Bradford as well as cover calls in portions of Newbury, Sutton, and Warner.

An out-of-town ambulance services most small towns in the region. A fast-squad, comprised of EMS trained personnel, responds initially with a vehicle outfitted to provide critical medical treatment and prepare the patient for transport. When Bradford's ambulance covers a mutual aid call in a neighboring town, we rely on the fast-squad to do the initial medical assessment and we arrive to transport the patient to either New London or Concord Hospital. Should we deem during the call that the patient needs a paramedic to handle extreme pain or life threatening

concerns, we can request a paramedic and have one en route to the scene in practically an instant.

If an additional ambulance is needed (when multiple patients need to be transported), we call either New London or Henniker (daytime only). On snowy days when folks are trying to remember how to drive on slick roads, we have been called as far as Contoocook Center because all other ambulances were responding to other calls. This is rare, but always a possibility.

If you are at all interested in knowing more about the squad, or possibly getting involved as a driver or EMS provider, you have the perfect opportunity to find out more. During the day of events on July 5, we will be mixed in the crowd wearing blue shirts that say Bradford Rescue. Please feel free to ask questions, our members will be more than happy to chat with you.

Stephen Manley
Lieutenant, Bradford Rescue



Hugo's Electric, Inc.

Licensed & Insured

RESIDENTIAL • COMMERCIAL

938-5573

3191 State Rte 114, Bradford

Video Pursuit

Open 11 to 9 M-F

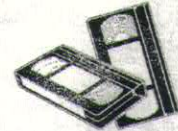
10-9 Sat/Sun

938-2111 • FAX 938-2453

DVD rentals \$3.00

All Old Movies only \$1.00!!!

Previously Viewed
Movies For Sale \$10



"Escape from your world;
watch a movie!"



24 HOUR SELF SERVICE
GASOLINE & DIESEL PUMPS

Serving the area's heating needs for more than 60 years

FUEL OILS & LPGAS / COMPLETE HEATING SERVICE

938-5335

Route 114, Bradford • Hall Ave., Henniker... 428-3333

PIZZA CHEF

LUNCH SPECIALS ~ SUBS ~ PASTA ~ SALADS
ITALIAN DINNERS ~ CALZONES

"Delicious Pizza"

• Many New Items • Ice Cream • Beer & Wines

DINE IN OR CALL AHEAD
FOR TAKE OUT SERVICE

938-2600

Lunch & Dinner
Open 7 Days 10 to 9

Bradford Pizza Chef at the corner of Rte. 103 & Main ~ Bradford, NH

DODGE'S GENERAL STORE

Featuring

Boar's Head



Premium Delicatessen Products

Beer • Wine • Full Dairy Case

Breads & Groceries

Medicines • Health & Beauty Aids

Newspapers

Housewares • Hardware,

Toys • Gifts • Hallmark Cards



Full Service

SODA FOUNTAIN

Ice Cream, Sundaes,

Banana splits, Shakes,

Frappes, Floats, Sodas

OPEN Sun-Thurs 8am-9pm

Fri & Sat 8am-11pm

102 E. Main Street, Bradford

938-2258

CHAOS DESIGN

* Graphic Design * Web
Design * Computer Tutoring
bleo@iamnow.net
938-2996



Bradford Women's Club Update, July, 2003

The BWC had the unveiling for the US Serviceman's Sign at the Rt. 103 intersection garden on June 14th. Thanks to Erica Gross for her hard work coordinating the event.

We are working on a sausage and meatball stand for the Fourth of July celebration. We will be contacting members to help.

The Rt. 103 garden looks great! Thanks to Jane Johnsen and Sandi Goldberg. We would also like to thank the Lyons Family Nursery for contributing shrubs.

There will be no general membership meeting in July. There will be an executive meeting July 8th at 9:30 AM at the Mountain Lake Inn. A craft workshop will follow at 11:00 AM. There will also be a craft workshop July 22 at 7:00 PM at the Mountain Lake Inn.

Barbara Vannata, BWC President

**Breezy Hill
Self Storage
Now Open!
Call 938-5826**

Community Center seeks new director

The Bradford Area Community Center is seeking applications for a part-time, independently contracted Director to oversee all the activities of the Center. A director will assist the Board in its outreach activities and in fundraising for the operation and maintenance of the Community Center. Position description and application may be picked up at the Bradford town offices or at the Community Center office (mornings only). References required. The BACC is a town agency and is an equal opportunity employer. For further information, please call 938-5973 or 938-6228.

SUMMER FAIR

July 19, 8:30 am - 1:30 pm
First Baptist Church, Main
Street, New London
**Sponsored by the
Baptist Women's
Fellowship**

Morning Coffee, White
Elephants, Books, Wood-
working, New & Collectible
Items, Pantry Goodies &
Baked Goods, Crafts, Plants,
Sewing & Knitting Projects,
Children's Activities, and a
Summer Cookout Luncheon
with the Kearsarge Commu-
nity Band.

South Newbury Union Church

Celebrate summer with a Country Chicken Barbecue at the handicap accessible Friendship House of the South Newbury Union Church. Join us Saturday, July 26 from 5:00-7:00pm rain or shine. Come and enjoy a great barbecue with friends and neighbors. The cost for adults is \$8, ages 6 through 11 \$4, and children 5 and under eat for free. Tickets will be on sale for the August Church Fair raffle and Chinese auction. The Friendship House is located on the corner of Village and Sutton Roads in South Newbury. For more information call Gail at 938-2064.

—Gail Bostic

French Farm Greenhouses



grower of top-quality plants & purveyors of distinctive garden ornamentation

Flowering shrubs add interest to your yard and garden.

Come and see what's blooming this week!

Open Mon-Sat 8-6, Sun 8-5
27 French Road, Henniker (603) 428-3383
follow the signs from Rtes. 9 & 202

Obituaries

Jonas (Estrid) Cosgrove, 70, died on Wednesday, June 11 at the Clough Center in New London. Formerly of Bradford, Jonas moved to New London two years ago to be near her husband, Peter, who is at the Clough Center. Born in Aabyhoj, Denmark, Jonas was the daughter of Andres and Johanne (Mouritcen) Jonassen. She is survived by her husband, Peter, siblings living in Denmark, two nieces and many friends and neighbors who have known her for many years.

Mary "Betty" Moore, 83, died suddenly on June 12 at Foxchase. She was born in Bradford, the daughter of Lester and Ruth (Hoyt) Hall. She lived in Bradford most of her life. She also lived in Los Angeles during World War II. She graduated from Simonds High School in 1938 and attended Concord Commercial College for two years. She worked as a bookkeeper for Cressy and Williams in Bradford for many years. Moore was a former member of the Grange, the Women's Club and Vesta Chapter No. 49 Order of The Eastern Star in Warner. Survivors include two sons, Robert Moore of Raleigh, N.C. and Richard Moore of Bradford; a brother, Vernon Hall of Bradford; two granddaughters, Jennifer Bedard and Rebecca Robinson; four great-grandchildren; and a niece and a nephew. Her husband, Robert Moore, died in 2001. Memorial donations may be made to the Bradford Fire Department, P.O. Box 206, Bradford 03221; or to the Bradford Rescue Squad, P.O. Box 381, Bradford 03221.

Ruth E. Bibbo, 83, of Vision Drive, died on June 14 in Natick, Massachusetts. She was born in New York City, the daughter of Walter and Isabel (Columbo) Cain. She lived in Sleepy Hollow, New York for many years before retiring to Bradford in 1973. Bibbo served as a trustee of the Brown Memorial Library, volunteered at the Bradford Elementary School and the Phelps Memorial Hospital in New York. Her husband of 58 years, Dr. James Bibbo Jr., died in 2000. Survivors include two sons, James Bibbo III of Bradford and G. Edward Bibbo of Toronto, Canada; two daughters, JoAnn Pedrotti of Wellesley Hills, Mass, and Nancy Wilson of Lanoka Harbor, N.J.; and seven grandchildren. Burial took place at the Sunny Plain Cemetery in Bradford. Memorial donations may be made to the Brown Memorial Library to establish a fund for children's books.

Mildred Schmidt, age 81, beloved wife of Eugene J. Schmidt, formerly of Clifton, New Jersey, died on June 24, 2003 at Hospice House in Concord, NH after a long illness. She was born on February 1, 1922 in Clifton, NJ, the daughter of Joseph and Catherine (Szumzer) Heller. Mildred worked at New England College, Henniker, NH, and was secretary to the Vice President. While working at the college, she developed an interest in reading and writing poetry, took courses, and subsequently received an Associate's Degree. She was happiest helping children at Center Woods Elementary School in Weare, NH, and at the Bradford Elementary School. Mildred was a member of the Bradford Women's Club and contributed her favorite recipes to the Bridge. She is survived by her husband, Gene, of 62 years; three daughters, Marilyn Russell, Nancy Kocsis, Jean Desjardins; a sister, Helen Ross of Clifton, NJ, as well as several grandchildren and a great-grandchild. Private funeral arrangements will be held by the family at a later date. Memorial donations may be made in Mildred's memory to the CRVNA, Hospice House, P.O. Box 1797, Concord, NH, 03302-1797.



From the "secret" recipe files of



Chef Jim Horigan
Thistle & Shamrock Inn

BARBECUED SALMON STEAKS

Looking for something different for that 4th of July BBQ?

Salmon Steaks (We like them at least an inch thick)

Make a basting sauce using the following:

In a saucepan, dissolve 2 Tbsp. cornstarch in 2 Tbsp. water.

Add:

½ cup dry sherry

½ cup Kikkoman soy sauce

1 Tbsp. sugar

Bring to a boil and cook until clear.

Brush both sides of the steaks with the sauce and cook 5-10 minutes on each side until done.

Serve with extra sauce.

Enjoy!

(If anyone has a question about, or problem with, any of my recipes, please feel free to call the Inn for assistance. —JRH)

WE'VE TRAVELED...

Come visit

Travel Network

in our new location
and plan a trip of your own!

**It's a good time
to start planning
your Christmas vacation!**

Now Located
on Route 11 in Sunapee
across from the school gym.

Serving New England Over 11 Years
With Experienced World Travelers



1-800-492-0257

www.adventurespirit.com

Hopkinton Town Band Scores a Hit!



On June 21st, the Bradford Historical Society sponsored its Band and Berry Festival. The morning sunshine gave way to some clouds, which provided relief from the earlier bright sunshine. There were about 50 people in attendance, enjoying the strawberry shortcake and the band music. Children ran about, well-behaved dogs romped, some people brought chairs or blankets, and others sat on the grass of the Meeting House grounds. The Hopkinton Town Band played many favorites, a rousing Stars and Stripes Forever, and the National Anthem, which brought all of us to our feet. It couldn't have been a nicer day and it was the perfect setting to enjoy the music, and meet neighbors and friends.

Don't miss future concerts of the Hopkinton Town Band: Wednesdays at 7:00 pm, July 9th through August 6th in Contoocook on the Green at Perkins Manor, at Park and Kearsarge Avenues.

An Evening of Shakespeare Rocks Bradford!

On Saturday, June 21, the New England Shakespeare Ensemble treated us to a Salon Presentation of excerpts from some of the Bard's comedies. The beloved Bradford Meetinghouse was the setting for this delightful presentation and stage lights were specially wired up for the performance. As we all know, there is (usually) no electricity in our quaint Meetinghouse. Refreshments and wine were provided and then we settled in to watch an hour of scenes. Characters quoted passages from *As You Like It*, *Love's Labour's Lost*, *The Taming of the Shrew*, and more. The costumes and minimal stage set allowed the talent of the actors full reign.

The newly formed repertory theater will combine a core company of Equity actors with the best local talent to present two plays in repertory the summer of 2004. Adult Enrichment, Professional Development for Theatre Artists, and School Outreach programs are among the goals of this talented troupe. Watch for them in the future!



Cast: Michael Littman, John Goodlin, Laurie Buchar, Jill C. Fischman, and Terry Stoecker, with Laurie Reeder as Minstrel.

Bowie's Market LLC

126 East Main Street, Bradford, NH 938-5533 • Fax 938-2609

THE LITTLE STORE THAT HAS IT ALL! • OPEN 7 DAYS
Mon.-Fri. 5:30am-8:00pm, Sat. 6:00am-8:00pm, Sundays 6:00am-7:00pm

**All of us at Bowie's wish everyone a
safe and happy 4th of July**

**COME IN AND CHECK OUT OUR
FLYERS FOR WEEKLY SPECIALS!**

Credit & Debit Cards • WIC • Food Stamps Accepted

Lake Massasecum Improvement Association

FLAIR NIGHT Friday, July 4th 9:00 pm
Flares available for sale at the following:

Al Mosley on Oakdale Road
Joan Dorn, French's Park
Tom Marshall, Davis Road
Dick Keller, Chrittenden Road
and at the Casino

ANNUAL MEETING of the Lake Massasecum Improvement Association is Saturday, July 12, 9:00 am at the Casino.

Then...

by Milly Kittredge



4th of July, 1999

Mary Mitchell's Pre-School.

Do you still have those neat hats?

Bradford/Newbury/Sutton Youth Sports Baseball/Softball Season Wraps Up

One hundred twenty-eight children participated in another successful baseball/softball season. The fields looked great, and I would like to thank Joe Torro and his maintenance crew of Brian Falicon, Karl Scribner, and Tommy Pitts for their diligent and tireless efforts. I also extend my appreciation to the Lumber Barn for their generous donation towards our new utility sheds. Finally, I would like to thank the Bradford Police Department with their work in solving a couple of vandalism incidents at the fields. The persons responsible for these acts were not players in the program.

Thanks to all the coaches, all the parents and their children at spring field clean-up day, the umpires, and those who worked the snack shacks. Volunteerism drives the success of BNSYS. Finally, as we enter the final week of June, the Bradford Brewers 14-15 Babe Ruth team is still alive in the playoffs after a first place finish in the league. The championship game, should they get that far, will be at Bradford on July 2nd at 5:30pm. Come watch a ball game!

Alan Craigie

Baseball/Softball Director



GENE'S RASPBERRIES

*Ready by the second week of July
Call for picking conditions*

P.Y.O. or we will pick.

Follow signs from covered
bridge on Route 103

45 Sunset Hill, Bradford

938-2190 • 8:00am to dusk

Mandatory Recycling

Here's a reminder of items you must separate and recycle at the Bradford Transfer Station. If you have any questions about proper disposal of an item, please ask the attendant.

Glass—all colors, any kind of glass object

Steel cans—food cans. Please rinse cans and bottles to reduce odor and pests.

Aluminum beverage cans—beer, soda

Scrap metal—any metal item that needs to be disposed of. Ask for attendant assistance.

Newspaper—Newspaper print only, no glossy inserts

Residential Mix—Magazines; glossy inserts; cereal, beer, soda, and other food boxes; old mail; wrapping paper; shredded paper; egg cartons; and any and all clean paper

Corrugated cardboard is recycled, and includes corrugated cardboard only. 4

Construction & Demolition—Treated wood, painted wood, sheetrock, shingles, furniture. There is a disposal fee, see attendant

Burn pile—untreated, unpainted wood only, brush accepted

Refrigerators/Air Conditioners—accepted. There is a Freon removal charge, see attendant

Mattress/Box spring—accepted if stripped. Springs go into scrap metal, foam and material go into regular household trash

Clothing & textiles—Planet Aid container on premises

Used motor oil—accepted, see attendant

The Household Hazardous Waste Day will be held on Saturday, October 19. Please deliver waste to the Henniker Highway Department, Ramsdell Road, Henniker.

Note from Ken Anderson, Manager:

We have had a wonderful response to our residential mix (clean paper) recycling. Residential mix represents 40% of post-consumer waste. This recycling helps in three areas: it saves taxpayer dollars by reducing the compactor tonnage for the landfill, it makes money for the town, and it conserves our natural resources used to produce paper goods.

Bradford Area Community Center

July Calendar

THURSDAY, JULY 3

4th of July Party, 12 noon, Senior Center. Lester Hirsh of Concord will perform a patriotic show. Wear your red, white and blue. Make your reservations early for lunch as space is limited. Everyone in the community is welcome.

FRIDAY, JULY 4

Independence Day Holiday – The Senior Center is closed.

SATURDAY, JULY 5

Red Cross Blood Donor Day 9:00-noon

MONDAY, JULY 7

It's Movie Monday, Senior Center., 12:30

THURSDAY, JULY 10

BACC Governance Board meeting, 4:30-7:00pm

BEOC meeting, 7:00-9:00pm

FRIDAY, JULY 11

Bradford Community Corporation meeting, 7:00am

Dave Poisson from Mr. Fix It is available to discuss services and answer any questions you may have, 10:00am – 12 noon. Please call for an appointment.

Picnic at Sunapee State Beach, Senior Center. \$5.00 per person.

MONDAY, JULY 14

Helene Watts from Lake Sunapee VNA on Strength & Fitness., 12:30pm, Senior Center.

TUESDAY, JULY 15

Meet to carpool for lunch at L.Z. Burdick's in Walpole, 10:15am. Call 938-2104 for reservations. Deadline is Wed. July 9.

THURSDAY, JULY 17

Blood Pressure and Foot Clinic, 12:30 pm, Personal Touch Home Health Care, free blood pressure check and foot care, 11:00am - 12:30 pm.

MONDAY, JULY 21

Lunch will celebrate International Ice Cream Day! Senior Center. Everyone bring a pint of your favorite flavor for everyone to taste. 50/50 raffle and door prizes!

WEDNESDAY, JULY 23

Rural Community Preservation Group 7:00pm. Frank Mitchell of Cooperative Extension Community Conservation Assistance Program will speak.

THURSDAY, JULY 24

Linda Howes from 14 Carrots will talk about "Your Herbal Medicine Chest and First Aid Kit" at Senior Center.

MONDAY, JULY 28

Tufts Strong Living Exercise Program Pre-registration at the Bradford Area Senior Center, 11:00am. You must arrive to pick up registration forms to prepare for September program. Hope to see you there!

THURSDAY, JULY 31

Join us for our Blueberry Festival, Senior Center! Everyone bring your favorite blueberry dessert to share. We will learn about the nutritious value of this wonderful fruit.

Tall Pines Summer Program

Five weeks of extreme fun are planned at the Bradford Area Community Center with returning Program Director Christine McCloskey. All sessions are for rising 3rd, 4th, 5th, 6th, 7th, and 8th graders. Program hours are Monday-Friday, 9:00am-3:00pm.

Session One, July 7-18, \$150

Session Two, July 21-25, \$75

Session Three, July 28-August 8, \$150

Discounts will be given for two or more children from the same family and/or for several sessions. Registration forms are available at KRSD schools, at the BACC, and by mail.

For more information call Susan Cowan at 526-2051 x232 or the BACC office at 938-6228. Tall Pines Summer Program is a collaborative effort of Kearsarge Assets Network, Kearsarge Regional School District, Bradford Parks and Recreation, Bradford Area Community Center, and the Town of Bradford Police Dept.

Program Information

The Senior Council meetings for June, July and August have been canceled. Fall activities of the Saturday Seniors begin September 6 with a pot luck picnic at the home of Jean and Dick Kennedy, Chittenden Road, Lake Massasecum. There will be a grill ready for you to cook your own hot dogs and hamburgers. For other dishes, please call Marion Hall at 938-5387 to discuss your choice or whatever is needed. For directions to the Kennedy's, please call Ona Ruchti 938-5330.

The welcome mat is always out for seniors, so come and get acquainted. Happy summer to all.

For information about Meals on Wheels or Senior programs call Senior Site Director, Sandi Bandieri at 938-2104.

For general information or to schedule activities call the Director at 938-6228. There is available time and space to accommodate all age groups, organizations, or activities at the BACC.

Ongoing Activities

Senior Craft Club, Mondays, 10:00am-noon

Bridge Group, Mondays, 1:30-4:00pm

Senior Luncheon, Mondays and Thursdays, noon

Yoga Class, Tuesdays, 6:00-7:00pm

Yoga Class (Not Advanced), Wednesdays, 9:30-11:00am. Call Fran 456-3099 to register

Senior Walk Around the Block, Thursdays, 11:00am

Weight Watchers, Thursdays, 5:15-7:00pm

Computer Tutoring, Beginners, first and third Fridays, 10:00am

Advanced, second and fourth Fridays, 10:00am in the Senior Room (For information call Bev Leo 938-2996)

Outside

by Ann Eldridge

An urban-born friend left a hurried phone message: "What about those blackbirds? The ones eating things on the side of the road, crows or ravens, and what about the smaller ones? Greckles, geckles, deckles, no! Grackles!"

There are blackbirds and there are birds that are black. For the compulsive namers of things, many of the local black birds are of the family Icteridae. This group includes the familiar red-winged blackbird, grackles, and cowbirds and some not-so-black birds like the bobolink and oriole. According to the matron Goose, twenty-four were required for a royal pie. But my friend was calling about black birds. Here's a brief guide to some of the most common dark-colored birds living here.

The largest is the turkey vulture, though it was not common this far north until recently. The first documented breeding in New Hampshire was in 1981. These are the big hang gliders with a wingspan of six feet. They rarely flap their wings except for takeoff or courtship display, holding steady in a pronounced V shape. They lay their eggs directly on the ground in high, rocky places. A similarly large, dark bird with its wings held on a horizontal plane might be an immature eagle, especially if seen near waterways in spring or fall.

The mysterious and hard to replicate croakings of ravens are sometimes heard overhead. They were absent from this area by the mid 1800s. After the mid 1950s, as the forests began to recover from extensive logging and farms were deserted, they began to repopulate from the north. These birds, unlike their crow relatives, are very wary of humans and are not apt to visit you in your yard. They typically nest in high, undisturbed real estate. At close range they unmistakably differ from crows with their larger size, heavier bill, and longer tail.

Crows are indeed likely the large black birds stalking the highways. Cruising for road kill, they are apt to pick up and fool with any object that strikes their fancy. They seem to have time to burn.

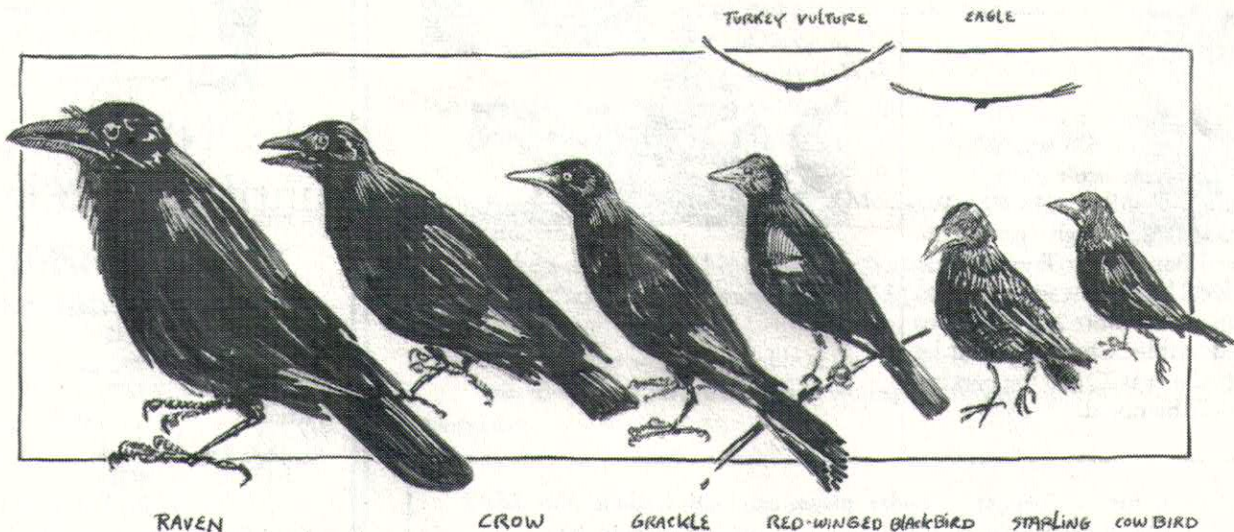
Grackles are blue jay sized but slimmer with long keeled tails. Their eyes are brown when young and turn almost white as adults.

Their plumage has a magnificent bronze or purple sheen. Grackles have expanded their numbers and their range to the north in the last eighty to ninety years. They are fond of suburbanization.

The European starling is next in heft. Their short tails and their nervous, zigzag stroll easily distinguish these small, dark birds. Starlings have an interesting history. In fits of nostalgia for the Old Country attempts were made to introduce starlings in the 1800s. An admirer of Shakespeare's works felt that Central Park might be improved with the addition of every bird mentioned in those venerable writings. Unfortunately, perhaps, the Bard also happened to speak of the "house" or English sparrow and the pigeon or "rock dove" which readily took to the new landscape. A lively industry soon sprang up in bluebird boxes, martin houses, plastic owls, and societies related to the defense and preservation of our native species.

The cowbird is yet another dark bird with dark consequences to their successful arrival east of the Mississippi. The now ubiquitous cowbird is incapable of building its own nest, and for good reason. It originated on the Great Plains where it followed the migrations of buffalo, chasing after the insects stirred up by those once numerous hooves. They developed mechanisms by which they could rapidly lay their large, fast-maturing eggs secretly in nests of other birds—to be raised by unsuspecting adoptive adults to the detriment of their own offspring. With the clearing of the eastern forests, the cowbird discovered that oxen, cows, and horses perform the same buffalo function they were accustomed to. The nests of 216 species of nest-builders are known to be parasitized by cowbirds, 139 of them with great success. In New Hampshire, the birds most frequently fostering cowbird young are the yellow warbler, song sparrow, solitary and red-eyed vireo, black and white warbler, redstart, ovenbird, and chipping sparrow.

The question remains why are these birds so black? Most birds seem to use colorful plumage to attract mates. Does it have something to do with heat absorption or camouflage? One person holding a high degree in biology responded to the question with "Because they CAN be." Perhaps that is the only answer needed.



July Calendar

TUESDAY, JULY 1

ZBA 7:00pm Town Hall, Public Hearings.
Selectmen's Meeting, Town Hall, 5:00pm

THURSDAY, JULY 3

Bradford Economic Opportunity Committee, Community Center, 7:00 pm

SATURDAY, JULY 5

Independence Day Celebration. See schedule on page one.

MONDAY, JULY 7

Cemetery Commission 10:00am Town Hall

TUESDAY, JULY 8

Planning Board, Town Hall, 7:00 pm

TUESDAY, JULY 15

Conservation Commission, Community Center, 7:30 pm

WEDNESDAY, JULY 16

Parks and Recreation, Town Hall, 6:30 pm

TUESDAY, JULY 22

Planning Board, Town Hall, 7:00 pm

WEDNESDAY, JULY 23

Bradford Historical Society, Old Post Office, 7:30pm "Treasures at the Tuck", NH Historical Society Program.
Rural Community Preservation Group at the Bradford Area Community Center 7:00pm. Frank Mitchell of Cooperation Extension Community Conservation Assistance Program will speak.



Children's Story Hour, Wednesdays at Brown Memorial Library, 10:30am

Bradford Historical Society, Old Post Office, open most Saturdays from 1:30-3:00pm or by appointment; call 938-5386



NOTICE

The BACC is growing in use. The parking lot has become inadequate. We plan to expand and resurface parking areas. The overall cost will be \$15,600. We have raised \$1,000 through a grant from the Cogswell Benevolent Trust. We do hope that local businesses and individuals will help in this effort. All donations are tax deductible. Checks should be made out to the BACC and the parking project should be noted.

To list events for the August Calendar, please call Beth Rodd at 938-2692 or e-mail bradfordbridge@mcttelecom.com before July 20.

Classifieds

YARD SALE. Multi-family yard sale, Route 114 south end of Massasecum. July 12, rain date, July 13. A wide variety of treasures and stuff and books galore!

'93 FORD TAURUS. 178K miles. New heater core. \$1,000 (or best offer). 938-6419

HELP WANTED: Conscientious housekeeper year round. References required. Call 938-2199

HELP WANTED: Vigorous, summer resident professionals seek part-time help with office (micro-soft computer skills necessary), some housework, gardening, etc. Possible year round apartment available. Call 938-2196.

To place a FREE classified ad of 40 words or less, please call Carey Rodd at 938-2692 or email bradfordbridge@mcttelecom.com.

AutoCraft

We do Motorcycle Inspections \$20

State Inspection • 20-day plate

2005 Rte. 114, Bradford



938-2623



DON'T WAIT until it's too late!

Bradford Bridge August deadlines

Display ads	July 20
Classified ads	July 23
Articles	July 20

See page 2 for more submission info.

GOT A GREAT PHOTO? SHARE IT IN THE BRIDGE!