



# THE BRADFORD BRIDGE

COMMUNITY NEWS BY NEIGHBORS FOR NEIGHBORS

Volume 12, Number 3; Issue 129

March 2002

## Calling all Bradford voters!

**M**arch: maple sugaring, mud, and Town Meeting month. Elections of town officials and Kearsarge Regional School District ballot voting will take place at Town Hall on March 12, 2002. Polls will be open from 8:00am to 7:00pm. Voting on the Planning Board's recommended amendments to the zoning ordinance also takes place at the polls. Registered voters then take up the budget and additional warrant articles at Town Meeting on Wednesday, March 13 beginning at 7:00pm. Selectmen and the Budget Committee recommend passage of all appropriations.

The Planning Board's Amendment No. 1 asks voters if they are in favor of the amendment to revise the ordinance so that non-conforming buildings being replaced must not extend beyond the original footprint on any floor of the new building.

The Planning Board's Amendment No. 2 asks voters if they are in favor of the amendment to revise the manufactured housing provision to allow them to be located only in subdivisions specifically constructed and designated as manufactured housing subdivisions.

The Planning Board's Amendment No. 3 asks voters if they are in favor of the amendment to amend the cell tower provisions to ensure abandoned tower properties are returned to their pre-construction condition, removing all buildings, roads, etc, and re-establishing vegetation.

At the meeting on Wednesday, voters will be asked to raise

*WARRANT continued on page 10*

## An out-of-town guest

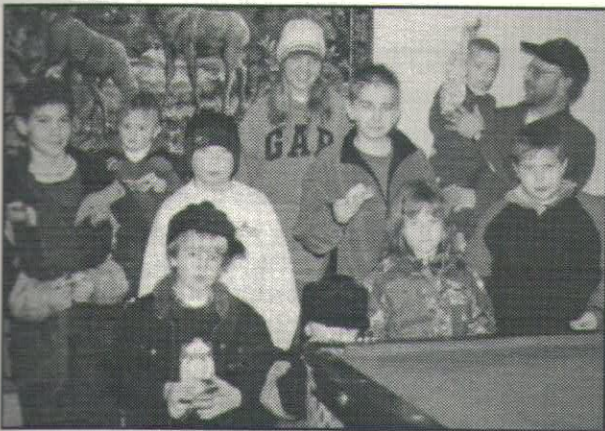


Have you seen this ambulance responding to rescue calls in Bradford since February 20<sup>th</sup>? No, we do not have a private ambulance service in town. If you look closely, you will see your friends and neighbors of the Bradford Rescue Squad manning the ambulance.

Our ambulance is having maintenance done and it will be out of service for approximately three weeks. Retta Brown, a member of the rescue squad and a full-time Intermediate EMT with Stewart's Ambulance, asked her employer if we could borrow an ambulance to use while Bradford's was being worked on. They agreed to supply an ambulance at no cost. The town is covering all liability in its use and again, at no additional cost!

So if you need help, call 911. The Bradford Rescue Squad is fully manned and ready to respond. Please put your house number where it will be visible. We can't help you if we can't find you.

## Bradford's finest



Winners in the Bradford Fish & Game Club's ice fishing derby pose for posterity: Garret Springer, Lauryn Baldyga, Geordie Mellen, Eric Moody, Pat Dyer, Alex Yates, Jason Leathers, Rhett Courser, Colton Wilhelm, and Samantha Pugliese, not necessarily in that order.

## Candidate's Night

Wednesday, March 6

7:00pm

Bradford Town Hall

A Supervisor of the Checklist  
will be available for voter registration

Sponsored by the Bradford Women's Club

## THE BRADFORD BRIDGE



P.O. Box 463  
Bradford, NH 03221  
Telephone: 603-938-5029  
FAX: 603-938-5702  
Email: bradfordbridge@conknet.com

### VOLUNTEER STAFF:

Lyn Betz, Editor & Publisher  
Meg Fearnley, Assistant Editor  
Carol Troy, Ad Manager  
Debbie Lamach, Business Manager  
Carey Rodd, Classified Ad Manager  
Betty Hague, Calendar Editor  
Diane Planchet, Proofreader  
Denise Fairbank, Proofreader  
Vern & Marion Hall, Subscriptions  
John & Elinor Robie, Distribution  
Gene Schmidt, Distribution  
Milly Kittredge, Archivist

### Subscription Information

For those wishing to receive the Bradford Bridge by mail, the annual subscription price is \$12 to cover the cost of mailing. To subscribe, please send a check to the address above.

### Advertising

The Bradford Bridge is a free community newspaper supported by advertisers. To place an ad, call Carol Troy at 938-6186 or send a FAX to 938-5702. Ad deadline is March 20.

### Submissions

The Bradford Bridge is written by neighbors, for neighbors. Anyone is welcome to submit articles and/or photographs of interest to the community. Send articles or letters to Lyn Betz at the address, FAX number or e-mail address above by March 20.

## Selectman's Update

March 12 and 13 are two very important dates in the calendar year for the Town of Bradford. On March 12 we vote by ballot. On March 13 we continue the Town Meeting and vote on the town budget and warrant articles. First, let's discuss the ballot vote. One of the ballots will have the school budget and items concerned with the Kearsarge Schools. Another, separate ballot, will contain the various town positions available. This year, for some reason, there are several positions that are to be filled that have no one running.

Here in Bradford, we keep things very simple. No "chads," "dangling" is not a problem. No "butterflies" and no holes to punch. Sue Peherson, the Town Clerk, just prints up the ballots and puts squares next to the names of the people running. You will note that there are also lines available for the amount of vacancies for the particular position to be voted on. You can vote by putting an "X" next to the name that is printed on the ballot or you can write in a name and then put an "X" next to that name. That is your choice. The votes are hand counted after the polls close. Do not assume that your vote does not count. Others may be thinking of the same person as you are. If you are interested in a particular position, put in your own name. We need people to fill positions that are important to the town. Please consider writing in a name or volunteering your time.

The following positions have no candidates by name on the ballot: Moderator (vote for 1), Supervisor of the Checklist (vote for 1), Trustee of the Trust Funds (vote for 1), Trustee of the Brown Memorial Library for two years (Vote for 1), Trustee of the Brown Memorial Library for 3 years (two positions have no candidates) (vote for 3).

At the reconvening of the Town Meeting on March 13, we will come together to vote on the operating budget and the warrant articles. You can vote by voice vote, by hand, or by ballot. Only you, the taxpayer, can determine what monies will be raised by taxation to run the town. Only you can determine what will be spent to accomplish the things that have to be done.

After many hours of review and consultation with the selectmen, the budget voted on by the Municipal Budget Committee is presented to you. For the first time ever, the Capital Improvement Plan was one of the things used in determining what will be spent on future projects. Some items are new to the budget or have been mandated by the State. Other increases are due to the cost of doing business going up. As an example, the fees for removing construction and demolition debris from the Transfer Station have gone up. There are mandated state requirements for monitoring the "Naughton Property." Fire protection requirements and air quality requirements at the Bradford Area Community Center have to be dealt with. The insurance premiums have risen 27% from last year.

Remember, the polls will be open on Tuesday, March 12 from 8:00am to 7:00pm at the Town Hall. We will adjourn and then reconvene at the Bradford Elementary School on Wednesday, March 13 at 7:00pm. Please exercise your right to vote.

—Dick Vitale, Chairman Board of Selectmen



MARCH: WINDS,  
MUD...

...homemade soup,  
and warm bread.

*Foxchase, Assisted Living*

Rt. 114, P.O. Box 620  
South Sutton, NH 03273  
(603) 938-5111

[www.suttonnh.com/  
foxchase.htm](http://www.suttonnh.com/foxchase.htm)

<sup>2x3</sup>  
Stewart Agency Realtors has been established in the Lake Sunapee Region since 1935. We are a family business spanning three generations providing real estate services to the surrounding area. Our extensive knowledge of the unique neighboring communities of this district is unsurpassed by any other agency. Our long established ties within these communities give us a superior working knowledge of the Dartmouth - Kearsage - Lake Sunapee regions. We ensure you the most pleasurable experience in your personal real estate transactions. As members of the National Board of Realtors we can access the most recent properties listed on the market by all Realtors in New Hampshire.

Additionally, our services include a NH Certified Wetland Scientist and established land planners experienced in working closely with local community zoning and planning boards. We are also NH licensed septic designers, accredited to provide complete specifications and site assessments. With over 20 years of ecological background we bring to you a full package of land development skills.

Whether you are a buying or selling property you can be assured that we will meet your needs.

## STEWART AGENCY

Main Street, Bradford  
938-2255 or 938-2256



## Governor honors Rosewood Inn



Governor Jeanne Shaheen personally offered an official Commendation to Dick and Lesley Marquis, owners of the The Rosewood Country Inn, for winning the title of Inn of the Year for 2002 in Pam Lanier's *The Complete Guide to Bed & Breakfasts, Inns & Guesthouses in the U.S., Canada, and Worldwide*, and for taking the top honors as the nation's best inn and for being named the "Most Romantic B&B/ Country Inn" by readers of *Arrington's Bed and Breakfast Journal*.

## News from the Town Clerk & Tax Collector

January 22. Erin Louise Taylor was born to Peter and Diane in Manchester.

February 4. Matthew Cox and Julie Bourn were married in Henniker.

Dog licenses are now available at the office or by mail. These licenses are for the 2002-2003 licensing year.

Absentee ballots are ready at the office for the upcoming election on March 12.

Town Election will be at the Town Hall on Tuesday, March 12 from 8:00am-7:00pm. Town Meeting will be at the Bradford Elementary School on Wednesday, March 13 beginning at 7:00pm.

Notices of tax lien have gone out. As of March 31, 2002 any unpaid taxes will accrue interest at the rate of 18% when the tax lien goes into effect.

Notices of tax deed have gone out. It is imperative to pay these past due taxes to avoid loss of property to the town.

OFFICE HOURS: Monday, 2:00-7:00pm; Tuesday, 8:00am-5:00pm; Friday, 8:00am-noon.

Telephone 938-2288, 938-2094

—Sue Pehrson

## Spring Baseball/Softball Sign-up

Spring is just around the corner and it's time to think about baseball/softball! Bradford Newbury Sutton Youth Sports (BNSYS) is holding spring sign-ups on Saturday, March 9 and 16 from 1:00-4:00pm at the Bruss Construction offices on Main Street. If your child is between the ages of 5 (before August 1<sup>st</sup>) and 15, have them come sign up to play ball. A copy of their birth certificate is required for players joining the program for the first time. Registration fees start at \$25. For more information, contact director Alan Craigie at 938-5154.

## Student Poetry Contests

The Poetry Society of New Hampshire is holding two poetry contests this spring. A poetry contest for high school students has a deadline (postmark) of March 9. Ten poems will be selected from all poems in each contest to compete at the national level. Each state winner will receive a \$10 prize and the poem will be published in *The Poet's Touchstone*. The entry fee is \$1 per poem. Send your poem plus a #10 self-addressed stamped envelope to Patricia L. Frisella, Contest Coordinator, 282 Meaderboro Road, Farmington, NH 03835.

The Poetry Society of New Hampshire Junior Division contest for grades 5 and 6 has a deadline of May 6. Send one copy of the poem with your name, address, school and teacher on the back. Any form of poetry is acceptable, one page per student. For complete guidelines send a #10 self-addressed stamped envelope to Janice Smith Seufert, 76 Edgerly School Road, Meredith, NH 03253.

**Zinom's**

an eclectic Shabby-Chic Shoppe  
& Country Tearoom (TBA)

*A mix of the fashionably aged with new  
Romantic gifts, chocolate, Davidson's  
teas, beautiful jewelry, Cardigan Mtn.  
soaps, Rosy Ring candles & more*

email: [zinoms@ifriendly.com](mailto:zinoms@ifriendly.com)  
web site:  
<http://home.ifriendly.com/~zinoms/>

938-6123 ♦ Open Wed-Sat 11-5

---

*Antiques and Artist Tree*

938-5045  
Open  
Wednesday-Sunday  
10-5

126-128 E. Main St. (behind Bowie's)

Carpet ♦ Vinyl ♦ Ceramic Tile ♦ Hardwood ♦ Area Rugs

NEW LONDON ♦ FLOORCRAFT

and Creative Kitchens

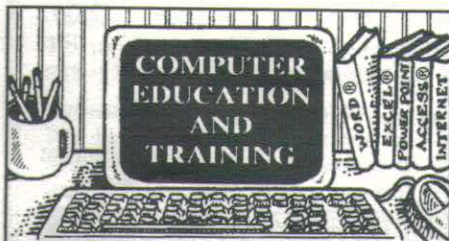
Carl & Gail Olson  
Route 11, Wilmot
526-2600  
800-870-4646

## Bradford-Newbury Community Workshop

The program on Thursday, March 21 will be a report and slide show at 1:00pm by Catherine Wareing, who went to Costa Rica this past year on a 4-H exchange program.

Our potluck luncheon at noon will feature dishes typical of those served in Costa Rica and the program will follow. Supporting the University of New Hampshire's 4-H exchange program has been one of the Workshop's main activities for many years. Candidates are chosen for the program based upon their participation in 4-H activities, as well as their roles in scholarship, leadership and volunteerism.

Be sure to note that the date for this meeting is the third Thursday of the month due to scheduling needs of the speaker. Anyone with a particular interest in Costa Rica is invited to participate and, as always, everyone is welcome to join the group. Give Dolores Hansen a call at 938-5586 for more information.



*Practical on-site training  
to increase productivity.*

### Classes Include:

- Word
- Excel
- Access
- Power Point
- Outlook
- Visio

**WOODY PRINGLE**

17 Years Experience in  
Business Education

603-938-5742

[www.woodypringle.com](http://www.woodypringle.com)



## Letters

To the editor:

I would like to insert a measure of perspective into the tax rate discussion. Given the habitual bemoaning of poor Bradford's soaring tax rate many residents will perhaps be surprised to hear that when tax rates across the state are equalized (calculated as if all towns were at the same 100% evaluation at the same time) Bradford's rate continues to be only ever so slightly above average.

This is not to say that all is well. As in other states, most of our tax money goes towards educating our kids. In New Hampshire, the funding source is primarily the property tax, the size, condition and location of our dwellings. Bradford's situation is obviously different than some of the other towns in our school district which have expensive lake front property, fewer children, and/or bigger tourist industries requiring few town services. Our effort as a town should be in keeping our tax rate in step with similar nearby towns. Compared to many surrounding towns, Bradford lags behind in its preparedness for reasonable measured growth though the Planning Board is working hard to catch up. Our tax rate in this current building boom could exceed the higher rates of Warner (\$25.02) and Henniker (\$29.00) if this town continues to be known among realtors and developers as the most favorable location for ter-

mination logging, inexpensive lots, inexpensive housing and development on back roads and non-roads.

Consider this. The highest evaluation rate in Merrimack County is Pittsfield at \$32.17 per \$1000. Pittsfield has lots of inexpensive housing, a lot of kids, and extensive services are required for transfer station, highway, police, and fire. In addition, Pittsfield has little "open space" or land protected from development. The lowest tax rates are enjoyed by towns with the most land in trees and agriculture. Though open space doesn't usually bring in much tax revenue, it doesn't require the outlay in services and thus a town gains overall. The highest rates go to towns where industry came in, bringing population growth, and then industry left, i.e. Berlin and Antrim.

We need a varied community and population growth happens but we also need to keep a pace consistent with surrounding towns.

Ann Eldridge

*Letters to the editor should be no more than 400 words and may be edited for clarity and content. All letters must be signed and include a telephone number for verification.*

## South Newbury Union Church Flea Market

The South Newbury Union Church is having their annual Flea Market and Bake Sale on Saturday, March 23 from 9:00am until 2:00pm. It will be held at the Friendship House in South Newbury. The Flea Market will feature household goods, toys, books; attic treasures and lots more. Look for home baked goods, jams and jellies in the Bake Sale. Enjoy coffee and goodies; meet lots of your friends and neighbors that you haven't seen since the beginning of winter. The Flea Market and Bake Sale will be indoors; the building is handicap accessible. For further information call 938-5369.



**Ayer & Coss**  
FUELS

**24 HOUR SELF SERVICE  
GASOLINE & DIESEL PUMPS**

*Serving the area's heating needs for more than 51 years*

**FUEL OILS & LP GAS / COMPLETE HEATING SERVICE**

**938-5335**

Route 114, Bradford • Hall Ave., Henniker . . . 428-3333

# The Case for the High School Addition

by John Dabuliewicz, Warner KRSD Board member

Back in March of 1995, the Kearsarge Regional School District annual meeting included a warrant article proposing a bond of \$7,275,000 to pay for an addition and renovations to Kearsarge Regional High School. That proposal would have sized the high school to accommodate about 700 students. It received less than the 2/3 vote required for passage.

In response, the School Board scaled back the project and in March 1996 submitted a warrant article to bond a reduced amount of \$6,271,527 to construct the addition which was approved by the required 2/3 of the voters. To gain voter approval, the new proposal eliminated eight classrooms and sized the high school to accommodate 650 students. The enrollment at the high school as of October 1, 2001 (the official date the state requires all school districts to report school year enrollment for calculating state aid) was up to 668 students. Fortunately, the 1997 addition was constructed to support a second story, which is now being proposed. Had the additional \$1 million in the 1995 bond been approved, this year's request to add nine classrooms would be unnecessary.

One piece of advice school board members often hear from citizens is to do a better job of planning for the future. Heeding such advice by planning for physical facilities sized to accommodate projected enrollment increases (which are a fact of life in our district because it remains a highly desirable place to live) seems wise. The current Board can only hope to be more successful than its 1995 predecessor in convincing the voters this year that we should build with future growth in mind rather than undersize building projects to reduce the short-term cost.

The recent *Facility Committee Report* presented to the Board had this to say about enrollment:

"Over the past ten years, District enrollment has increased at an overall rate of 1.5% to 2%. However, the rate of growth has varied dramatically between grade levels. The high school and middle school population has been growing at a rate in excess of 3% while the elementary enrollment has actually declined. This difference in growth rates is probably ex-

plained by the housing market and by overall population changes. There is very little rental property or multifamily housing in the seven towns of the district and property values are relatively high. Thus it is very difficult for young families to find affordable housing. As they grow older and more prosperous, they can then afford to move into the district hence accounting for the growth of the high school and middle school population. A review of building activity in the seven towns shows little reason to change the historical pattern....(*Facility Committee Report*, 11/29/01, p. 1)"

In forecasting future enrollment, the Facilities Committee used two different projection methods as noted above and more fully explained in the *Report* (available from the Superintendent's Office, tel. 526-2051). One method yielded a forecast for the year 2012 of 773 students for the high school while the other method projected 890 students by the year 2012. Considering the shorter term, the class of 2002 should graduate 128 students while about 180 students will graduate from the eighth grade at the Middle School, most of whom will enroll at the high school. While the present high school enrollment already slightly exceeds the building's design capacity, it is abundantly clear that this growth will continue and the building is not sized to handle the foreseeable increase in enrollment over the next decade.

Meanwhile, our high school students are already forced to attend classes in the auditorium, in various conference rooms, in the music room, and in a converted closet. Directed studies for freshman students, which require them to work on current academic courses with teacher oversight, can no longer be scheduled due to lack of space. Furthermore, the State Department of Environmental Services has mandated that the district upgrade the wastewater treatment plant serving the high school because it fails to consistently comply with environmental standards designed to protect ground and surface water.

It is both necessary and prudent for the District to resolve these space needs as proposed.

**Hugo's Electric, Inc.**  
*Licensed & Insured*  
 RESIDENTIAL • COMMERCIAL  
 938-5573  
 3191 State Rte 114, Bradford

**Martin Energy**  
 \* \* **COAL** \* \*  
 Ask about our new & used stoves  
 Hand Fired Heating Units  
**938-5531**

**Need travel arrangements?**

Now, more than ever, you need the expertise and support of a travel agency.



Serving New England Over 10 Years  
 With Experienced World Travelers.

We find the best vacation and travel values for your money

**TRAVEL NETWORK VACATION CENTRAL**

**1-800-492-0257**  
[www.adventurespirit.com](http://www.adventurespirit.com)

**Country Spirit**  
 RESTAURANT & TAVERN

*"In the only Henniker on earth"*  
 Jct Routes 202, 9 & 114, Henniker NH 03242

**428-7007**

**WINTER HOURS**  
**CLOSED TUESDAYS**  
 Open  
 Sun-Mon-Wed-Thurs  
 11am-9pm  
 Friday-Saturday 11am-10pm

To enhance your dining experience, we are now a  
**NON-SMOKING**  
 establishment

## A special thank you

I would like to thank Denise Fairbank for four years of dedicated volunteer service to Bradford as ad manager of the *Bridge*. I am also very grateful that she has found an equally wonderful replacement for herself. I welcome Carol Troy to our staff!

—Lyn Betz

From the "secret" recipe files of

**Chef Jim Horigan**



**Thistle & Shamrock Inn**

### SPINACH CASSEROLE

This is quick and easy to put together with the frozen spinach or, if you have the time, steam two bags of fresh spinach.

Combine:

- 2 pkgs. frozen chopped spinach, well drained
- 1 pint cottage cheese
- ¼ lb. softened butter
- 1 lb. grated cheddar cheese
- 6 eggs
- 6 Tbsp. flour

Mix until well blended. Put into a well buttered casserole dish and bake at 350°F for 1 hour and 20 minutes.



**Rainbow Garage Inc.**  
539 Route 103 • S. Newbury, NH

603-938-5100

**\*FREE 10 POINT  
SAFETY CHECK\***

*If you get stuck, we'll help you out.*

*But you're better safe than sorry,  
without a doubt.*

*Don't get stranded, or in a wreck,  
Stop in for our FREE 10 point check!*

Call today for an appointment.

(\*This is not a state motor vehicle inspection.)

## Lalla competing in 2002 Paralympics

Bradford's Jason Lalla will be participating in the 2002 Paralympics in Salt Lake City as a member of the U.S. Disabled Ski Team. He is expected to ski in the Super G, Giant Slalom, and Slalom and may also ski in the downhill. Lalla has won gold medals at the 2000 World Disabled Championships held in Switzerland and the 1998 Paralympics in Nagano, Japan.

For the first time ever in the U.S., the A&E Network (Arts & Entertainment Channel) will provide television coverage of the competitions. Between March 9th and 16th, viewers can tune in to A&E for highlights of Paralympic action from 6:00pm to 7:00pm (EST). Harry Smith and Joan Lunden will host the coverage. NBC will carry the Opening Ceremonies on March 9 at 2:00pm (EST)

## CLL Spring Course Registration Open

The College for Lifelong Learning's spring course flyer is now available and registration is open for the 12-week spring term. Classes begin the week of April 8. Sixty courses are offered this spring at CLL's Newport and Lebanon centers. They include courses in a variety of disciplines including behavioral science, computers, management, criminal justice, and communications. Several courses are offered online, making them available statewide to students who have access to the Internet. Also scheduled are free information sessions about CLL degree and certificate programs. Information sessions are scheduled for 5:00pm March 4 at the Lebanon Center and 5:00pm March 13 at the Newport Center. CLL, one of the four colleges in the University System of New Hampshire, was established in 1972 to serve adults. CLL offers associate and bachelor's degrees as well as advanced certificates in a number of professional areas. Plymouth State College graduate courses in education and business administration are also available at CLL. Financial aid is available for part-time (four credits) and full-time (eight credits) degree candidates. To request a course flyer, call CLL's center in Lebanon (448-6797) or Newport (863-2361). Information is also available on CLL's website: [www.cll.edu](http://www.cll.edu).

## Bradford Country Squares

The Bradford Country Squares will host a square dance at the Town Hall on Saturday, March 16. Norm Poisson will call A-1 from 7:00-8:00pm, and Plus from 8:00-10:30pm. Marilyn Rivenburg will cue. Shamrock Hop describes the Irish decorative theme of this dance. Admission is \$5 per person. For further information, you may call Kris Sweet at 863-0974. Spectators are always welcome at no charge.

—Kris Sweet, President

## BWC Update

The Bradford Women's Club will hold their executive meeting on March 12, 9:30am at the Bradford Area Community Center. The March general meeting will be on March 19, 1:00pm at the First Baptist Church Vestry and will feature an "Antiques Roadshow" by Elinor Harris and Lynn Long of White Star Auctions. Bring an item you would like to have appraised.

—Barbara Vannata, President



*2x2*  
[iamnet.USOnline.com](http://iamnet.USOnline.com)  
Your One Stop Internet Support Shop

- Internet provider
- Web hosting
- E.Commerce
- 4 free mailboxes
- \$10 for 25 hours
- 56K v.90 modems
- Fastest T1 around
- 18 Ring Hill Rd. Bradford, NH
- 938-2127**

## NH Author Rebecca Rule Featured at Brown Memorial Library

The Friends of Brown Memorial Library feature New Hampshire native and author Rebecca Rule of Northwood on Thursday, March 7 and March 14 at 7:00pm. In the first program, Rule will read selections from New Hampshire prose writers and poets. "Of Stones & Bones," is a tribute to contemporary New Hampshire writers whose prose and poetry reveals the special characteristics of this place. This is an audience participation program (purely voluntary) of individual voices and choral interpretations of work ranging from Charles Simic's "Stone" to Alice Fogel's "The Wind Is." Rule said, "Selections vary by season but typically include works by Donald Hall, Maxine Kumin, Thomas Williams, Jane Kenyon, Marie Harris, and other great writers whose words fill the air as we speak it and take its meaning to heart."

On Thursday, March 14 at 7:00pm, Rebecca Rule will present "Tales from the Town of Woodford: An Evening of Yankee Humor." Don't mistake this for Maine humor, it's pure New Hampshire. Mavis, Perley, Kermit, Gob and their friends in

Woodford have many adventures and writer Rebecca Rule is happy to tell you all about them. Many hear these stories and think they recognize their neighbors or even themselves but, though based on a New Hampshire native's experiences, they're made up, pretty much. Critical topics typically covered: Small town politics, the dump, bargain hunting, and how not to hire out work, how to get along with your relatives including your spouse.

Rebecca Rule is the author of two collections of short stories, *Wood Heat* and *The Best Revenge*. Her audiotapes are *Perley Gets a Dumpster* and *Other Harrowing Tales*, *Fishing With George*, and *Mavis Goes to Yoga*. Her columns on writers and books appear weekly in the *Concord Monitor*, *Nashua Telegraph*, and *Portsmouth Herald*. The free programs, made possible with a grant from the NH Humanities Council and The Friends of the Library, will be held in the handicapped accessible Brown Memorial Library, 78 West Main Street, Bradford. A snow date has been scheduled for Thursday, March 21. For more information, call 938-5948.

## NEHSA Ski & Board Challenge and Auction

On Saturday, March 9, two events of note will take place at Mount Sunapee Resort—the annual Corporate Ski & Board Challenge and Auction. Both will benefit the New England Handicapped Sports Association (NEHSA), the oldest non-profit disabled sports program in New England. The outdoor highlight will be the Corporate Ski & Board Challenge, where individuals, businesses and corporations sponsor four-person teams who compete on Mount Sunapee's slopes. Amateur racers are welcome. The tax-deductible sponsorship fee (\$275 per team) includes full-day lift passes for all team members, two runs on a giant slalom course at 10:00am, and a "goody bag" for each team member filled with gifts from local merchants.

Throughout the day, a silent auction will take place in the Sunapee Lodge with bargains including round-trip airfare on U.S. Airways and Southwest Airlines, ski passes to many mountains throughout the northeast, lodging packages, skis, snowboards, clothing, gift certificates to

local restaurants and stores, and more. The day will close with a live auction at 5:00pm, promising further bargains as well as warm camaraderie with skiers, boarders, and NEHSA staff.

New England Handicapped Sports Association provides over 400 ski and snowboard lessons per year to individuals with disabilities, both physical and developmental. NEHSA is operated by a staff that includes one paid position and over 100 volunteers. This volunteer staff, which performs every sort of task from office work to fund-raising to on-snow instruction, assures that the maximum possible proportion of resources available goes directly to program development and implementation. NEHSA operates from its own lodge at Mt. Sunapee, a lodge built with donations from members, supporters, and sweat equity from volunteers. Team sponsorships are still invited, as are donations for the auction. For more information about either event, visit NEHSA's website at [www.nehsa.org](http://www.nehsa.org), call 1-800-628-4484, or email at [info@nehsa.org](mailto:info@nehsa.org).

*AutoCraft* ✓

1989 Ford Ranger,  
4 X4 X-cab, \$2,500  
1990 Plymouth Voyager, \$1,800  
1991 Ford Taurus, \$1,500

Test Drive Available  
State Inspection • 20-day plate

2005 Rte. 114, Bradford

938-2623

AAA  
MasterCard  
VISA

**WALCO** 3  
**MECHANICAL CO.**

REFRIGERATION, HEATING,  
AIR CONDITIONING, ELECTRICAL CONTRACTORS

COMMERCIAL • INDUSTRIAL • RESIDENTIAL

SERVICE • SALES • INSTALLATION

MAINTENANCE PROGRAMS

SYSTEM EVALUATIONS

**938-2926**

BRADFORD, NEW HAMPSHIRE

*Ed* **BRADFORD**



Situated on 3 acres, this three BR and two bath home has a nice layout with the living area in the middle and the BR's and baths on both ends. Full basement. Gas/FHW heat. New home.

**\$153,000**

ELLIOT HANSEN ASSOCIATES  
◆ A REAL ESTATE COMPANY ◆  
603-763-9999

## Candidates for Town Offices



Budget Committee, for three years—  
vote for two

- George P. "Bud" Morse
- David Pickman

Cemetery Commission, for three  
years—vote for one

- Thomas A. Riley

Moderator, for two years—vote for one

- No candidate

Planning Board, for three years—vote  
for two

- Edythe Craig
- Marlene Freyler
- Michele Vautrain Halsted
- "Don" Johnsen
- "Doug" Troy

Scholarship Committee, for three  
years—vote for one

- Dawn Rich

Selectman, for three years—vote for  
one

- "Jim" V. Bibbo, III

Supervisor of the Checklist, for six  
years—vote for one

- No candidate

Trustee of the Brown Memorial Library,  
for two years—vote for one

- Brooks McCandlish—Write in Candidate

Trustee of the Brown Memorial Library,  
for three years—vote for three

- Nancy Alibrandi
- Laurie A. Brown—Write in Candidate
- Lynn Horigan—Write in Candidate

Trustee of the Trust Funds, for three  
years—vote for one

- Tom Riley—Write in Candidate

Zoning Board, for three years—vote for  
one

- Bernard D. Lamach

To provide the Community with information on this year's candidates for town offices, the Bridge asked each candidate to answer four questions:

- 1) Why do you want to serve?
- 2) What are the most important issues you will have to address?
- 3) What do you hope to accomplish during your term of office?
- 4) What are your qualifications?

### George P. Morse, Jr., Budget Committee

- 1) The financial operations of the Town always interest me. After having been absent from it for a year I desire to become involved once more.
- 2) Our town is constantly growing. Some growth becomes issues for increased Town expenditure to be addressed by the Budget Committee with the assistance of the Selectmen.
- 3) To help ensure the Budget Committee and the Selectmen monitor and control all Town expenditures, which is their responsibility to the resident taxpayers.
- 4) I served on the Budget Committee from 1983 through 2000. I believe my experience over those years provides me with the knowledge and insight to be an effective participating committee member.

### Tom Riley, Cemetery Commission

- 1) I am running for re-election for Cemetery Commissioner.
- 2) The most important issues that need to be addressed are the tree work that needs to be done in our cemeteries, repair of fences and stones that have been broken or fallen, and the continued re-mapping and check of our cemetery records.
- 3) We hope to continue the mapping work, especially Sunny Plains Cemetery and if funds permit, begin the tree work that needs to be done.
- 4) I have worked in cemetery management in the past and am glad to be able to offer my services to the Town in this capacity. P.S. I understand there is an open position as Trustee of the Trust Funds. Since this is somewhat associated as most of the

Cemetery monies are in the trust funds, I am willing to have my name written in for this position.

### Michele V. Halsted, Planning Board

- 1) Bradford is poised for change, and all citizens need to be engaged in determining the directions the community should take. The Planning Board should be the focus of planning for the future, to lay out for the electorate its assessments of the decisions that need to be made to guide Bradford successfully through change. We all know of communities that have failed. Much of the attractiveness of our community is due to the beauty of its setting and its open space. Without controlled growth, this can easily be lost.
- 2) Development is pressing in from all sides as a consequence of nearby recreational facilities and the expansion of commuting distances. Population growth should be expected in Bradford as a result, and that in turn raises key questions: What are the limits of our land to support growth, and what impact will growth have on our services and infrastructure—schools, emergency services, aquifers, country roads—and on the rural tranquility we enjoy?
- 3) Looking ahead, we need to conceive a comprehensive master plan that preserves Bradford's heritage and rural character. We can learn from how other communities have successfully faced challenges of this kind. I already have begun discussions with the New Hampshire Department of Environmental Services and the Central New Hampshire Regional Planning Commission to get a better sense of innovative and successful strategies. My principal goal as board member will be to communicate the range of choices and possibilities so the community may make informed decisions on the blueprint for the future.
- 4) A New England native, I have twenty years of experience in the diplomatic service dealing broadly with government officials at all levels to get results. I welcome the opportunity to help shape an enduring plan for Bradford that sets as its priority wise custodianship of her treasures, so that when growth comes, the essential character of the town that we know and love remains unchanged.

### Don Johnsen, Planning Board

- 1) Having had the privilege of living in essentially all regions of the U.S. at one time or another, I recognize how much potential is present in Bradford; its people, scen-

*Continued on next page*



## Candidates *continued*

ery and resources. I also recognize that with the surge in population growth headed our way we are at a critical cross-road. We have the opportunity to either guide our Town's future in a positive direction or just react to events as they occur. I believe we should be proactive in improving our Town rather than just being spectators.

2) The pressures of growth and the tendency for rising tax rates to meet new obligations for community services. Achieving a fair balance between necessary regulation and the rights of individual property owners. Planning for Bradford's future.

3) Developing policies and procedures to effectively guide growth in Bradford. Refining or eliminating unnecessarily burdensome and ineffective regulations. Incorporating new and modifying existing regulations to address new issues arising due to rapid growth in order to protect our current residents and maintain property values. Promoting enforcement of regulations, fairly and consistently, for the benefit of all residents. Balance the focus of the Planning Board between the issues of today with the goals and objectives for the Bradford of tomorrow.

4) I've been an active member of the Board of Selectmen's Bradford Economic Opportunities Committee (BEOC) since its formation in January 1997. The BEOC's primary function is long range planning for our community. In addition, I've served on the Board of Directors of the Bradford Community Corporation since its incorporation in 1998. In various previous endeavors I was involved in policy, operational and financial planning activities: a family-owned business; serving as the director of strategic planning for a medium-sized corporation; various positions involving planning while serving in the U.S. Navy.

### Doug Troy, Planning Board

1) I moved to the town of Bradford because it has a lot of great things going for it, and would like to do my part to keep those qualities intact and improve upon them where possible.

2) While there will be many issues that arise over time, I see two that need to be addressed quickly. First, the population of our area is growing, and Bradford is beginning to see pressure from this growth. While growth is difficult, if not impossible to stop, we can certainly take some modest steps to direct that growth in a positive direction. Typical of most small

towns, our Planning Board currently has minimal tools it can utilize to regulate growth in a meaningful way. If elected, I would propose that the Planning Board adopt a small number of tools allowing the Board to focus growth in a direction that is beneficial to the Town and its residents. Many of our neighboring towns have implemented some of these suggestions and have experienced reasonable success. Unfortunately, most towns put these into effect after they have been over run by growth. I would like to see us implement some of these tactics before we have a town we would not be proud to call home. The second issue is our tax base, it is essential that our growth be well planned to create a tax base that will maintain or lower our tax rate. Proper planning will make Bradford a community that is prepared for growth, so that when future development occurs, it will be in a manner that does not negatively impact our tax rates. If we chart our future now, we can avoid seeing our property taxes double or even triple down the road.

3) I would like to work with the Planning Board to place some simple but effective systems into service that will help in maintaining the traits that we truly enjoy about Bradford. We live in a great place; let's control our own destiny, and not allow some out of town developers decide what our town should look like in five years.

4) While only living in Bradford for a short time, I have become come involved with the Bradford Economic Opportunity Committee (BEOC) and the Bradford Community Corporation (BCC). Having lived in several areas of the country I have seen many of the tools that planning boards can use to direct development. Likewise, I have seen the other side of the coin and have witnessed how some developers have worked to circumvent the town's best interest to achieve their own business/personal goals. In business I have worked for the largest of corporations and also have been a partner in small startup businesses that have grown to large successful enterprises. I understand the balance of creating an environment where business can flourish and one where people will want to call home.

### Dawn Rich, Scholarship Committee

1) To be able to assist children in obtaining scholarships so they can reach their goals of higher education.

2) That we are fair in selecting the applicants that are sincere in their quest for higher education.

3) To continue to assist and encourage

more applicants to seek scholarships for further education.

4) My qualifications have been working with youth here in New Hampshire and New Jersey both as a parent involved in PTA, PAL, Little League, Lassie League, Sunday school teacher and as a school secretary for fifteen years. In my personal life my five children have gone through their college years with scholarships. I have never forgotten how much I appreciated all the help my children received from their scholarships. Now I want to be available to assist any student in obtaining scholarships so they can obtain their goals of higher education.

### Jim V. Bibbo III, Selectman

1) I am retired from public school administration but still desire to serve the public.

2) Equity, organization, growth and budget issues.

3) To have served the citizens fairly, equitably and with integrity.

4) I have been responsible for multi-million dollar budgets, have worked with budget committees, served as a planning board member, zoning board alternate, welfare fair hearing officer, CDBG committee, business and industrial search committee and elderly advocate with CAP.


### Brooks McCandlish, Trustee of Brown Memorial Library (Write-in candidate)

1) The Library provides a wonderful service and resource for the town. I would like to serve for two more years as Library Trustee because it an important job that needs doing.

2) The most important issues to be faced will be working with new and old staff to set a course for the future, develop the collection, and adapting technologies to better serve Library users and all of the people of Bradford.

3) I would like to see everyone in Bradford getting the most out of the Library, and I would like to be able to pass on my experience to new Trustees.

4) I love to read and to discover new information. I have served for several years as Trustee, two years as co-chair, and one year as chairman of the board.

938-2315	40,000 BOOKS
 <b>Books by the Lake</b>	
Buying & Selling Quality Used Books in Most Fields Route 114 at Lake Massasecum Wed-Sun 10:00-5:30	

**WARRANT**Continued from page 1

and appropriate \$1,166,759.00 for general municipal operations.

**Additional warrant articles:**

To see if the town will vote to raise and appropriate \$20,000 to be added to the Highway Department Capital Reserve Fund. This sum is to come from fund balance (surplus) and no amount is to be raised by taxation.

To see if the town will vote to raise and appropriate \$10,000 to be placed in the Fire Department Capital Reserve Fund. This sum is to come from fund balance (surplus) and no amount to be raised by taxation

To see if the town will vote to raise and appropriate \$10,000 to be added to the Ambulance Capital Reserve Fund. This sum is to come from fund balance (surplus) and no amount to be raised from taxation.

To see if the town will vote to raise and appropriate \$5,000 to be added to the Town Facilities and Buildings Capital Reserve Fund. The sum is to come from fund balance (surplus) and no amount to be raised from taxation.

To see if the town will vote to create a Town Highway Garage Capital Reserve Fund for the purpose of constructing a new Highway Garage and raise and appropriate \$10,000 to be placed in said fund

To see if the town will vote to create a Gravestone Repair and Preservation Expendable Trust Fund and raise and appropriate \$1,000 to be placed in said fund. Further, to appoint the town's Cemetery Trustees as agents to expend said fund.

To see if the town will vote to raise and appropriate \$26,000 for road oil. This will be a non lapsing appropriation pursuant to RSA 32:7 and will not lapse until the funds are used or on December 31, 2006.

To see if the town will vote to create a Police Facility Capital Reserve Fund for the purpose of expanding the existing police facility or for a new police facility and raise and appropriate \$5,000 to be placed in said fund.

To see if the town will vote to discontinue the Revaluation Capital Reserve fund created in 1988. Said funds, with accumulated interest to date of withdrawal, are to

be transferred to the Town's general fund.

To see if the town will vote to raise and appropriate \$10,000 for engineering and drainage work on Main Street. This is a non lapsing appropriation pursuant to RSA 32:7 and will not lapse until the funds are used or on December 31, 2006.

To see if the town will vote to raise and appropriate \$40,000 for the continuation of the reconstruction of East Washington Road. This will be a non lapsing appropriation pursuant to RSA 32:7 and will not lapse until the funds are used or on December 31, 2006.

To see if the town will vote to raise and appropriate \$50,000 for the purpose of completing the final engineering plans/drawings, applicable state and federal permitting and bid specifications for replacement of bridge #100-141 located on Fairgrounds Road. This will be a non lapsing appropriation pursuant to RSA 32:7 and will not lapse until the funds are used or on December 31, 2006.

To see if the Town will vote to raise and appropriate a sum not to exceed \$87,900 for the purchase of a new dump truck, plow and wing for the Highway Department.

To see if the town will vote to raise and appropriate \$7,500 for the purchase of a plow for the Highway Department.

To see if the town will vote to raise and appropriate \$38,900 for the purchase of a One Ton Truck for the Highway Department, with \$10,400 to be withdrawn from the Highway Department Heavy Equipment Capital Reserve Fund, \$10,000 from the town's fund balance (surplus), with the balance \$18,500 to be realized from the trade-in of existing equipment.

To see if the town will vote to raise and appropriate \$7,500 to fund the second year of a three year lease/purchase agreement of a Police Vehicle. The lease/purchase agreement gives the town the right to purchase the vehicle for one dollar at the end of the three year lease term.

To see if the town will vote to raise and appropriate \$9,700 to fund the first year of a three year lease/purchase agreement of a new Police Vehicle. This allows for \$7,700 for the vehicle lease/purchase and \$2000 to equip the vehicle. The lease/

purchase agreement gives the town the right to purchase the vehicle for one dollar at the end of the three year lease term.

To see if the town will vote to raise and appropriate \$3,500 for the purchase of street signs. This will be a non lapsing appropriation to continue until the money has been used or until December 31, 2006.

To see if the town will vote to raise and appropriate \$5,500 for the purpose of inspecting boats launched from the town boat launch on Lake Massasecum and educating the public on milfoil contamination. This would provide an attendant five days a week to inspect from May to September.

To see if the town will vote to raise and appropriate \$5,000 for oil tank removal at the Naughton Property as required by the Brownfields study and the Department of Environmental Services. This money represents the deductible on a Site Level Investigation required by the state, with all other costs covered by the Oil Discharge and Disposal (ODD) Clean-up Fund. This will be a non lapsing appropriation pursuant to RSA 32:7 and will not lapse until the funds are used or on December 31, 2006.

To see if the town will vote to raise and appropriate \$15,000 for detailed research to define the volume of waste materials in the landfill on tax map 17-12 and develop a plan for their removal. This will be a non lapsing appropriation pursuant to RSA 32:7 and will not lapse until the funds are used or on December 31, 2006.

To see if the Town will endorse development of the Town Land, currently the location of the Transfer Station and Bradford Historical Society, totaling 45 acres, more or less, (Map 3, Lot 110) which is bordered by Route 103 and Route 114. The purpose is to broaden Bradford's tax base by developing the land for a combination of beneficial uses such as a Municipal Complex (e.g., Highway Department, Transfer Station), a Business Park and a seasonal or cluster Housing Area.

To see if the town will vote to accept the reports of the Town Officers.

To transact any other business that may legally come before the meeting.

*pk*

*pd*

*pd*

**DUMONT'S BARBER SHOP**  
 Wednesdays 8:00-6:00  
 Main St. Denis Dumont, Owner

**Henniker Pharmacy**  
 YOUR FRIENDLY PHARMACY  
 428-2456

**ROBERT C. STEWART, Jr.**  
 938-2256 Main Street

Septic System Designs  
 Test Pits, Perc Tests  
 Site Assessments  
 Land Planning  
 Permitting

# Legislative Report

By Representative Beth Rodd



Since my last report, the legislative session has been moving along at breakneck speed towards an early conclusion. Usually we have the benefit of a second year session that continues through June and gives us plenty of time to hear bills, digest the information, and discuss and ruminate about the multi-faceted aspects of our bills before casting a thoughtful vote. This year though, we have rushed through so much information to finish session by May that it has been difficult to fully integrate the voluminous information into some coherent structure.

We've had great success so far with pushing through the "Milfoil" bill. The success of this bill, one that will apply \$300,000 for the purpose of studying and eradicating this exotic, aquatic pest from our lakes, belongs in no small measure to Rep. Barbara French and certainly to the efforts of Dick and Marcia Keller. Their willingness to persevere through an unusual number of obstacles over a period of years has paid off in a heightened awareness of the problem in the private and public sectors. The success of this bill will benefit the entire state and help to maintain the tourism trade upon which much of our economy rests. We owe our hard working neighbors and our local Rep. many thanks.

A smattering of bills that I found interesting and thought others might as well:

HB 420 relates to redistricting of house seats, a process that is reviewed every ten years and based on current census information. Generally, the House majority seeks to rearrange districts in a manner that is favorable to the majority and this year is no exception. While Democrats aren't pleased with the plan, they haven't yet decided whether it's bad enough to ask for a governor's veto. The bill passed the House and is on its way to the Senate.

HB 1209, relative to a civil rights act for health care providers. This would have allowed any health care employee who objects to a medical procedure to refrain from treating or providing medical assistance or information to a patient if that employee had personal or ethical problems with the issue at hand. A pharmacist, for instance, could refuse to dispense birth control pills or other medications he or she found not in keeping with their own ethics. The committee and the House saw the immense implications of such a bill and it was voted ITL (inexpedient to legislate, i.e. dead).

HB 1380, relative to parental consent for abortions performed on children less than 16 years of age. According to testimony, 75% of young, pregnant women confide in their parents when confronted with an unplanned pregnancy. The committee felt that no legislation could be successful in forcing young women to talk with parents if they feel confiding in parents is not an option. This is particularly so in the case of rape or incest. Supporters of the bill reasoned that since students cannot receive even an aspirin from the school nurse without permission, a procedure such as abortion should require parental permission. The House defeated the bill by a large margin but expect to see this and all other abortion bills reappear next year.

HR 21 is a "House Resolution," that is it carries no weight of law but gives the House an opportunity to vote on a collective opinion that sits on a desk someplace. This particular resolution says that the New Hampshire House of Representatives urges the development and implementation of a national missile defense system. Last fall, a group of Washington lobbyists with ties to Lockheed-Martin began making the rounds of state legislatures to encourage this resolution. Success for the resolution translates into jobs for their industry. The 186-135 vote isn't very impressive and tells us that some support and some do not support this effort. Many of us have deepening concerns about the wisdom of escalating missile development here because we know that such development will be matched by other countries and will eventually result in a heightened military readiness throughout the world that can only be satisfied by war. Think twice before you support any resolution.

I am amused by the great fuss over Rep. Martha Fuller Clark's short nap, filmed by a colleague and used to discredit her congressional run, that has hit the papers lately. There is a Rep. on my own committee who regularly nods off and snores so loud that it's impossible to hear testimony. Upon being nudged back to wakefulness, he asks witnesses all the questions that have been answered during his nap! Sleep apnea is a very common ailment at the House. Keep calling and e-mailing me with your ideas and interests. Constituent interest is what makes this job so interesting. You may contact me at 938-2692 or e-mail [c\\_rodd@conknet.com](mailto:c_rodd@conknet.com).



**New London**  
526-6951

**Fresh Meats**  
&  
**Produce**  
**Fresh Fish**  
**Fresh Deli Items**

**TOP LINE** ✓

**Complete Chimney Service**

Rebuilding • Flashing • Cleaning  
Stainless Liners • Masonry

Quality and Clean Work  
Yrs. Experience  
References Available  
Reasonable Rates • Fully Insured

**(603) 763-7385**  
Todd Longley



**For All Those Years of Happiness,  
Honor Them With Blue Seal**


3 Available at




**Merrimack Farm  
& Country Store**  
Main Street, Bradford • (603) 938-2211

*free*

# Does **your HOUSE** **NEED** a little **WORK?**



**Resident Application  
Kearsarge Region Workcamp**

Your Name \_\_\_\_\_

Your Address \_\_\_\_\_

City \_\_\_\_\_ State \_\_\_\_\_ Zip \_\_\_\_\_

Daytime Phone \_\_\_\_\_ Evening phone \_\_\_\_\_

Check all that apply:

- Low income    Senior Citizen    Handicapped

Name of Church (optional) \_\_\_\_\_

Describe work you would like to have done:

\_\_\_\_\_  
\_\_\_\_\_  
\_\_\_\_\_

Signature \_\_\_\_\_ Date \_\_\_\_\_

**Let us do the work  
for you, for FREE !!!**

Sign up for the Kearsarge Region Workcamp! Trinity Bible Church and Casey Family Services are sponsoring 400 individuals and youth from across the country to come to the Kearsarge area and perform hands-on home repair projects for **senior citizens, low income, needy and handicapped residents**. Up to 100 homes will have work done on them!

Free materials and labor will be provided to residents for roofing, painting, porch repair, wheelchair ramps and other external and internal repairs. The work will be done by teams of 5 young people and at least one adult leader who are members of church youth groups representing many Christian denominations.

The workcamp will run July 14-20, 2002, so sign-up NOW! Just fill out the form to the left and mail to:

Kearsarge Region Workcamp  
Trinity Bible Church  
PO Box 566  
South Sutton, NH 03273

Applications will be received until the Workcamp is full on a first come, first served basis. For further information please call 603-927-6345



# Church News

From Lynne E. Hubley

**Women's Christian Guild:** On March 1, from 11:00am-1:00pm the ladies will reminisce about the old days by bringing a picture or item pertaining to a special time in their lives. Chef's salad and beverage will be provided. A sandwich may be brought if desired.

**Women's Spiritual Renewal Retreat:** (sponsored by American Baptist Women's Ministries) Friday evening, March 8 at 6:00pm through Saturday, March 9 at 3:00pm at Judy Marshall's home on Lake Massasecum. The theme will be "Know the Heartbeat of God." The retreat will include singing of praise songs, worship, journaling, prayer, devotions, and free time to enjoy the outdoors or the hot tub.

**New Membership Gathering:** People who are interested in becoming a member of the First Baptist Church will meet on Sunday, March 10 from 2:00-3:00pm at the Fiske House. This will be a time of sharing personal church histories, history of FBC, responsibilities and privileges of membership, and some information about the make-up of the church and American Baptist polity.

**Youth Groups:** (Grades 5-8) Wednesday, March 13 from 6:30-8:00pm at the Church Vestry. The program will be "Mission Impossible." The youth will play a spy/mission game where they will look for excellent relationship qualities and counterfeit qualities. This is a team game. There will also be discussion and other activities surrounding the issue of quality friendships. Ice Cream Sundaes will be the snack.

Sunday, March 24 from 1:00-4:00pm the youth will travel to Hogan Sports Center at Colby Sawyer College for an afternoon

of swimming, basketball, and running. The cost is \$5.00.

**Food Pantry:** The pantry will be open Wednesday, March 20 from 6:00-7:00 p.m. Food can also be obtained at other times by calling the church office at 938-5313.

**Palm Sunday Worship Service:** Sunday, March 24 is Palm Sunday and our worship service will be a musical one including a Palm Sunday medley by our young people. Service begins at 10:00am.

**Maundy Thursday Service:** The service will begin at 7:00pm on Thursday, March 28. In addition to singing familiar Lenten hymns and a time of prayer, we will have a play entitled "Witnesses of the Crucifixion." We will also celebrate the Lord's Supper.

**Good Friday:** The sanctuary will be open on Good Friday, March 29, between noon and 3:00pm. People in the Church and community are invited to come into the sanctuary and enjoy some quiet meditation and reflection.

**Easter Sunrise Service:** Our annual inter-church Sunrise Service will be held on the grounds of First Free Will Baptist Church in Sutton on Sunday, March 31 at 6:30am. Those participating in the service will be Rev. Herschel Rogers and Rev. Deborah Blaisdell from Sutton, Rev. Art Urie from South Newbury Union Church and I from Bradford. There will be a breakfast immediately following the service with a free-will offering taken.

**Easter Worship Service:** Our service begins at 10:00am. The message will be "Three Gifts of Easter" from the Gospel of John. We will sing the traditional Easter hymns as well as some contemporary special music.

*Pa*

## Breezy Hill Self Storage

### Now Open!

Call 938-5826

## HENNIKER VETERINARY HOSPITAL

PROFESSIONAL ASSOCIATION  
Small Animal & Equine Practice

Alyssa J. Brust D.V.M.  
Robert A. Brust D.V.M.

24 Hour  
Emergency Service  
House Calls Available

Henniker,  
New Hampshire  
603-428-3441

## Video Pursuit

Open 11 to 9 M-F  
10-9 Sat/Sun  
938-2111 • FAX 938-2453

DVD rentals \$3.00  
All Old Movies only \$1.00!!!

NEW PLAYSTATION 2  
GAMES HAVE ARRIVED!

"Escape from your world; watch a movie!"

## PIZZA CHEF

LUNCH SPECIALS ~ SUBS ~ PASTA ~ SALADS  
ITALIAN DINNERS ~ CALZONES

### "Delicious Pizza"

- Many New Items • Ice Cream • Beer & Wines

DINE IN OR CALL AHEAD FOR TAKE OUT SERVICE

**938-2600**

Lunch & Dinner  
Open 7 Days 10 to 9

Bradford Pizza Chef at the corner of Rte. 103 & Main ~ Bradford, NH

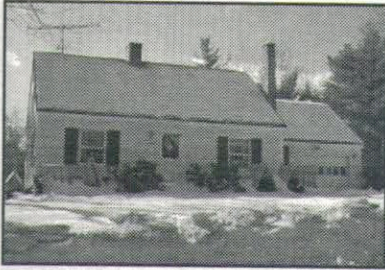
927-4973

Route 114  
North Sutton

**ALL & AWL REPAIR**

Small Engine Sales & Service  
Tractors • Harness & Tack Repair  
Art, Kirk, Lynne & Kris Chadwick  
Hours: Mon-Fri 7:30-5:00, Sat til 1:00

SUNAPEE - \$172,500



This new listing is close to the Harbor and schools as well as I-89 & Mt. Sunapee. It is a well-built 3 BR Cape on 2.2 acres w/many recent improvements. Deck, screened porch, 1 car garage and more await your arrival! Call for an appointment.

**Ann C. Hallahan Real Estate**

Route 103 / At Covered Bridge, Bradford  
938-2020 Web page: heartofsunapee.com  
E-Mail: coveredbridge@conknet.com

**DODGE'S  
GENERAL STORE**



**We Carry**

- Beer • Wine • Full Dairy Case
- Breads & Groceries
- Medicines • Health & Beauty Aids
- Newspapers
- Housewares • Hardware,
- Toys • Gifts • Hallmark Cards



**Full Service  
SODA FOUNTAIN**  
Ice Cream, Sundaes,  
Banana splits, Shakes,  
Frappes, Floats, Sodas

**OPEN 7 DAYS 8AM-9PM**  
102 E. Main Street, Bradford  
938-2258

**Preschool News**

Bradford-Newbury Kindergarten and Preschool is excited to announce our new name: Kearsarge Area Preschool. When the Kearsarge School District voted for public kindergarten last year, BNKP decided that we would no longer offer a kindergarten program but, instead, offer preschool to three-year-olds as well as four-year-olds. Our new name reflects that change and it offers a more representative name to include the families we serve coming from other area towns such as Warner and Sutton.

It's hard to believe, but registration for next year is already upon us! We are holding a registration night on March 7 at 6:00pm at the classroom in the Bradford Area Community Center. Children who will be at least three years old by September 30, 2002 are eligible to attend. If you have questions about our program or cannot attend registration night, please call Sarah at 938-2624.

Thank you to all the community members who ordered Tupperware to help our fundraiser along! We appreciate your orders. If there is anyone who would still like to place an order, please call Sheri at 938-2024.

**Spelling Success**

On Tuesday, February 12, fourteen fourth and fifth grade students took part in the annual KRES at Bradford Spelling Bee. The school spelling bee is the first step in the Scripps Howard National Spelling Bee and the purpose is to select a student representative who will participate in the area spelling bee in Concord, NH on March 23. The *Manchester Union Leader* and *New Hampshire Sunday News* sponsor area and statewide spelling bees.

Jeffrey Wilson, who is a fifth grade student in Mrs. Lee's class, will represent KRES at Bradford at the area spelling bee. Kenny Barker, also in Mrs. Lee's class, was the runner-up. In an exciting finish, Jeff and Kenny went eleven rounds before Jeff won the Spelling Bee by correctly spelling the word "hibernation."

**Voter Registration**

**Saturday, March 2**

**11:00am-noon at Town Hall**



**APPLESEED RESTAURANT**

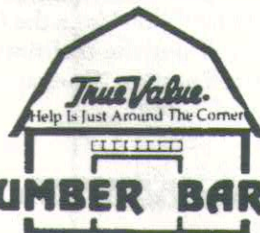
Returning from vacation Tuesday, March 5

- Tuesday & Thursday Night Two 'Fers
- Roast Beef Buffet Wednesday Night
- Fish & Chips on Friday
- Prime Rib on Saturday
- Sunday Breakfast Buffet 9:00am-noon

"COUNTRY DINING AT  
COUNTRY PRICES"

Tuesday-Saturday 5:00-9:00pm, Sunday 9:00am-noon, 5:00-9:00pm

Route 103, Bradford, NH \* Member, Bradford Business Association \* 938-2100



**the LUMBER BARN, Inc.**

Route 114 • Bradford  
(603)938-5161 • (800)287-9889

**Power Equipment**

Sales - Service - Rentals  
Stihl & Husqvarna  
forest & garden  
power products  
Tools & Safety Clothing

**Lumber**

Millwork - Plywood  
Treated Lumber  
Roof & Floor Trusses  
Masonry Supplies  
Kitchens

**Building Materials**

Tru-Test Paints & Stains  
Glass & Screen Repairs  
Makita Power Tools  
Garden & Lawn,  
Electrical & Plumbing Supplies

**Hours**

**Monday - Friday: 7am - 5pm**  
**Saturdays: 7:30am - 5pm**

## Bradford Area Community Center March Calendar

Ongoing Activities:

**MONDAYS AND THURSDAYS**

**CAP Senior Luncheon**, Senior Room, noon (for reservations, please call 938-2104)

**WEDNESDAYS**

**Yoga Class**, not advanced, Senior Room, 9:30-11:00am, call Fran at 456-3099 to register

**FRIDAYS**

**Computer Tutoring**, Senior Room, 10:00am (other times by appointment, call Bev at 938-2996)

**TUESDAY, MARCH 5**

- **CAP Fuel Assistance**, Conference Room, 9:00am-noon (please call 456-3207 for appointment)
- **"Acupuncture and Nutrition,"** CAP sponsored program, Senior Room, 11:00am

**THURSDAY, MARCH 7**

- **BACC Governance Board**, Senior Room, 5:30pm
- **Kearsarge Area Preschool Board Meeting**, Senior Room, 7:00pm

**SATURDAY, MARCH 9**

- **Bradford Community Corporation Annual Meeting**, Senior Room, 10:00am, all area residents welcome
- **BACC Annual Meeting**, Senior Room, 11:00am, all area residents welcome
- **Senior Council Meeting**, Senior Room, 1:00-3:00pm, all seniors welcome

**MONDAY, MARCH 11**

- **Bridge Group**, Senior Room, 1:30-4:00pm
- **Rainbow Girls**, Community Room, 5:30-7:30pm

**TUESDAY, MARCH 12**

- **AARP 55 Alive Driver Program**, Senior Room, 9:00am-1:00pm, Tom Riley, instructor, pre-register at 938-5539, course cost \$10

**WEDNESDAY, MARCH 13**

- **AARP 55 Alive Driver Program**, Senior Room, 1:00-5:00pm, Tom Riley, instructor, pre-register at 938-5539, course cost \$10

**THURSDAY, MARCH 14**

- **Special CAP St. Patrick's Day Luncheon**, "Music and Sing-a-long," Senior Room, Noon
- **Brownies**, Community Room, 3:00-5:00pm
- **Kearsarge Area Preschool Parents Meeting**, Community Room, 7:00pm

**FRIDAY, MARCH 15**

- **Bradford Community Corporation**, Senior Room, 7:00am

**TUESDAY, MARCH 19**

- **CAP Fuel Assistance**, Conference Room, 9:00am-noon (please call 456-3207 for appointment)

**THURSDAY, MARCH 21**

- **Personal Touch Free BP Check and Foot Care Clinic**, Medical Services Room, 12:30-2:00pm
- **BACC Governance Board**, Senior Room, 5:30pm

**MONDAY, MARCH 25**

- **Bridge Group**, Senior Room, 1:30-4:00pm
- **Rainbow Girls**, Community Room, 5:30-7:30pm

**THURSDAY, MARCH 28**

- **Brownies**, Community Room, 3:00-5:00pm

For details or questions regarding Meals on Wheels or Senior Programs call 938-2104. For Youth Program information call director Susan Cowan at 938-6228 or 526-2389. For general information call the Administration Office at 938-6228. There are still certain rooms available for meetings or parties. If you are interested, please call the office at 938-6228.

428-7076

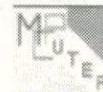
*pd*

### Wright Travel

WORLDWIDE TRAVEL ARRANGEMENTS  
Henniker Mini-Mall Nancy Wright  
Main St., Henniker Manager

### Ray's Auto Repair at Battles Farm

Please call for an appointment during business hours  
Open Monday-Thursday 8-12  
Friday 8-7 • Saturday 9-6  
**938-2241**



### McPuter

Mike Pugliese—Owner/Technician  
Located in the R.L. Dodge Building  
102 E. Main St., Bradford, NH  
mpugliese@conknet.com  
**(603) 938-2701**

Guaranteed Computer Sales & Service  
Repairs & Upgrades Our Specialty!

### Thistle and Shamrock Inn & Restaurant

11 West Main Street, Bradford, NH  
03221  
"Bed and Breakfast Accommodations"

**Casual Gourmet Dining**  
5:30 to 9:00 p.m.

St. Patrick's Day  
Buffet  
Sunday, March 17  
5:30-8:00pm

**938-5553**

(Closed Mondays and Tuesdays)

# March Calendar



## MONDAY, MARCH 4

Bradford Cemetery Commission, Town Hall, 10:00am, call 938-5386 for more information

Library Trustees, BML,, 7:00pm

## TUESDAY, MARCH 5

ZBA, Town Hall, 7:00pm  
Bradford Fish and Game Club, Gillingham Drive, 7:30pm

## WEDNESDAY, MARCH 6

Meet the Candidates, Town Hall, 7:00pm

## THURSDAY, MARCH 7

BACC Governance Board, BACC, 5:30pm  
Rebecca Rule Prose & Poetry reading, BML, 7:00pm

## FRIDAY, MARCH 8

KRMS Dance, KRMS, 7:00-9:30pm

## MONDAY, MARCH 11

Selectmen's Meeting, Town Hall, 5:00pm  
8th Grade parent meeting at KRHS, 7:00pm

## TUESDAY, MARCH 12

VOTE for Local Offices, School Budget and School Warrant Articles, Town Hall, 8:00am-7:00pm  
BWC Executive Meeting, BACC, 9:30am  
Planning Board, Town Hall, 7:00pm  
KRMS PTO Meeting, KRMS, 7:00pm

## WEDNESDAY, MARCH 13

TOWN MEETING, Bradford Elementary School, 7:00pm

## THURSDAY, MARCH 14

"Tales of Woodford" with Rebecca Rule, BML, 7:00pm  
KRSD School Board Meeting, KRHS, 7:00pm  
BEOC Meeting, BACC, 7:00pm

## FRIDAY, MARCH 15

Bradford Community Corporation, BACC, 7:00am

## MONDAY, MARCH 18

BBA, Church Vestry, 7:00pm

## TUESDAY, MARCH 19

BWC General Meeting, Church Vestry, 1:00pm  
Conservation Commission, Town Hall, 7:30pm

## WEDNESDAY, MARCH 20

Country Capitalist Meeting will not be held this month

Road Committee, Town Hall, 7:00pm  
Friends of the Library, BML, 7:00pm

## THURSDAY, MARCH 21

BACC Governance Board, BACC, 5:30pm  
KRMS Spring Drama Production, KRMS, 7:00pm

## FRIDAY, MARCH 22

KRMS Spring Drama Production, KRMS, 7:00pm

## MONDAY, MARCH 25

Selectmen's Meeting, Town Hall, 5:00pm

## TUESDAY, MARCH 26

Planning Board, Town Hall, 7:00pm

## THURSDAY, MARCH 28

KRSD School Board, KRHS, 7:00pm

## FRIDAY, MARCH 29

KRMS Dance, KRMS, 7:00pm

- **Children's Story Hour**, Wednesdays at Brown Memorial Library, 10:30am
- **Thistle Spinners**, Every Monday, Thistle and Shamrock Inn, 1:00-3:00pm
- **Bradford Historical Society**, Old Post Office, open by appointment, call 938-5386

# Classifieds

**CELIAC POTLUCK & SUPPORT GROUP** will form in the Henniker area if there is enough interest. Group is for gluten-intolerant people who wish to meet 4-5 times per year. Call 428-7086.

**MOVING SALE (cont'd)** Sat. March 9, 9:00am-3:00pm. 1929 Green and Cream Enameled Cookstove, Pine Bar with shelves, mahogany sideboard, 3 pieces of white wicker, lamp stands, many small and Free items. Sunshine Farm, Rt. 103, 938-2716

**FOUR CORDS WOOD**, cut, split, dry. \$475, you pick up. 938-2820

**2-BURNER WOOD STOVE**, Atlanta Stove Works, 27 box. Disassembles, stove pipe included. \$100. 938-2820

To place a **FREE** classified ad of 40 words or less (no businesses please), call Carey Rodd at 938-2692 or email [bradfordbridge@conknet.com](mailto:bradfordbridge@conknet.com).

Friends of Brown Memorial Library

## EASTER EGG HUNT

Saturday, March 30

Stories in the Library at 11:00am, egg hunt following

PRIZES for decorated baskets!

For preschool through 3rd Grade



## Bradford Bridge April deadlines

Display ads	March 20
Classified ads	March 23
Articles	March 20*

\*If you would like to submit an article covering an event occurring after the deadline, please contact Lyn Betz at 938-5029.

**GOT A GREAT PHOTO?  
SHARE IT IN THE BRIDGE!**

To list events for the April Calendar, please call Betty Hague at 938-2722 or e-mail [bradfordbridge@conknet.com](mailto:bradfordbridge@conknet.com) before March 20.