



THE BRADFORD BRIDGE

PROFESSIONAL

Jim & Lynn Horgan
owners of Thistle &
Shamrock Inn
see page 13

Volume 5, Number 12

Community News - By and for our neighbors

December 1995

NEWS BRIEFS

Main Street property sold to high bidder

Richard and Judy Willoughby submitted the high bid for the town-owned Main Street property known as the "Milly Jane." As abutters, Richard said, they've had to watch the building deteriorate; now they plan to remove it and plant flowers.

Bridge construction begins December 4

United Construction was awarded the contract to rebuild the Fairgrounds Road bridge. United plans to begin work on December 4; completion date will depend on weather conditions.

Burdette Auctions cease at Main Street site

Selectmen notified Bob Burdette that he could no longer hold auctions at the Car Care of Bradford facility until the owner corrected fire code violations. Burdette said he was moving his business because Holloway had refused to make the repairs.

House numbers are critically important

Selectmen remind homeowners to install house numbers in a visible spot either on the house or at the end of the driveway. House numbers are very important for emergency services to locate individuals in distress.

4.8% reduction in tax rate

The tax bills sent out in November reflected a 4.8% reduction in Bradford's 1995 property tax rate. The rate is now \$27.30 per \$1,000 of assessed evaluation, down \$1.31 from the 1994 rate. The county portion is up 31 cents. But both the school and town portions were lower.

The school portion is \$17.68, down 82 cents. According to School Board Rep Dick Keller, this is due both to "holding the line" on the budget and to the adjustment to the apportionment formula adopted at last year's school meeting.

The town portion is \$7.41, down 79 cents. In 1994, total appropriations were down and revenue was up, partly due to capital reserve funds being used to cover some warrant article expenses.

Payment of property tax bills is due by December 15.

High School addition gains support from combined boards

Selectmen representing the Kearsarge District towns and the KRSD School Board met on November 28 to discuss school district facility planning matters. Plans for the proposed high school addition and related site work were reviewed by Architect R. Wendell Phillips. The combined boards accepted the few modifications that resulted from this re-

Library chooses Central School site for expansion

"We'll take it." With those few words, Janet Sillars, Chairman of the Library Trustees, informed the town that the trustees would accept the offered Central School site for the library's expanded facility. This decision marks the end of months of study and discussion among trustees, building committee members, and town residents about where the library should be located.

The decision also marks the beginning of the next phase, planning and fundraising. When the Selectmen inquired what the next step was, Sillars responded that they intended to determine "within a month or so" whether it was more cost effective to remodel the existing structure or to replace it with a single-story building. They also must decide whether to submit a warrant article for the project immediately or

to take a year to develop plans and submit only a capital reserve warrant article in 1996. Trustees emphasized that funding this project will require extensive fundraising in addition to town approval to commit tax dollars. Sillars commented that, historically, library projects sometimes are not approved the first year the project is presented. She emphasized the commitment of the board, stating that if town approval is not received the first year, they will submit a proposal the following year.

Concern was expressed by the Selectmen over asking residents to fund multiple major facilities projects within a short period of time. Marcia Keller repeated her feeling that the town needs a

■ See LIBRARY, page 18

view and voted unanimous support for the project.

The process to calculate projected population growth of the seven district towns was discussed. These figures will be used in developing a five-year plan for school district facility needs. After considering several possible approaches, the boards agreed to

use a three-year historic average with a 1% extended growth.

Reports on both electrical and mechanical engineering needs at the Middle School were made available as part of this planning process. The ongoing updating and repairs scheduled for this building should satisfy use requirements for the five-year study period.

**Celebrate
the
Holiday
Season in
Bradford**

<p>Saturday, Dec. 2 ADVENT DAY First Baptist Church Crafts workshop Craft & Bake Sale Hanging of Greens Ham & Bean Supper see page 5</p>	<p>Sunday, Dec. 3 CHRISTMAS IN THE COUNTRY Inn Tours Crafts & Antiques Fair Messiah Sing Tree Lighting see page 2</p>	<p>Sunday, Dec. 10 CHRISTMAS TEA at the Rosewood Country Inn Call 938-5253 for reservations.</p>	<p>Saturday, Dec. 16 Cookie Walk/ Book Fair at KRES Bradford Santa's Outlet at Town Hall Story Hour, Santa's arrival, carol sing at Library see page 4, calendar</p>
--	---	---	--



Celebrate Christmas in the Country on December 3

Come spend an afternoon in the country! On Sunday, December 3, the Bradford Business Association and the Bradford Women's Club are co-sponsoring the town's first annual "Christmas in the Country" from noon to 6:00 pm.

Hear the sound of jingling bells as the horse-drawn carriage clip-clops through the covered bridge. Do a little shopping at the Holiday Crafts and Antiques Fair, next to the covered bridge. A lunch of hot chowder and chili will also be available there. That's also the place to purchase your \$5.00 admission tickets for the candlelight tours of the town's four inns, all decked in their holiday finery. An afternoon Messiah Sing-along will be held at the Bradford Baptist Church, 3:30-5:30. The culmination of the day-long event will be the annual lighting of the Christmas tree, all sure to put you in the holiday spirit.

Bradford-Newbury Workshop news

The Bradford-Newbury Workshop will meet for a pot luck Christmas luncheon on Thursday, December 14 at the Friendship House. Come before noon to help set up and do handwork of your own. Please bring a gift in the \$5.00-\$10.00 range, wrapped and labeled for appropriate age and gender. If you did not sign up for the luncheon, come anyway and bring a casserole, salad or dessert. —Clare Bensley

Hugo's Electric Service

Hugo Flinkstrom
Licensed & Insured

RESIDENTIAL • COMMERCIAL • INDUSTRIAL

938-5573 Rte 114, Bradford

Visions and Dreams A Body, Mind and Soul Shop



138
Village
Road
South
Newbury
Tel.:
938-2244

Hours:
Wed-Sat.
10 to 6

Just arriving . . .
AROMATHERAPY

Our shop features:
Alternative health books
Gems and minerals
Native American items
Fine, hand-crafted jewelry
Custom Framing
Bach Flower Remedies
Homeopathic medicines
Gifts with a purpose
...and much more!

Call for details on our
monthly alternative health
workshops and monthly
psychic readings.



Inn tours are part of Christmas in the Country celebration

An inn tour, sponsored by the Bradford Business Association, will take place on Sunday, December 3, noon to 5:00, as part of Christmas in the Country. Participating inns include the Candlelite Inn, Rosewood Country Inn, Mountain Lake Inn, and The Thistle and Shamrock (formerly the Bradford Inn). The Dickens Village at Foxchase will be a feature of this tour and the Applesseed Inn is offering a special discount for Sunday evening dinner when you present an inn tour ticket.

A horse and carriage will be available during the afternoon, starting at the post office, for a typical New England winter ride.

Tour tickets may be purchased at Ann Hallahan's Real Estate Office on December 2 and 3 and at participating inns. Proceeds from the tour will benefit the BBA Scholarship Fund.



HARVESTER MARKET

*Fresh Meats
Produce - Deli
Beer - Wine
Party Platters*

Hours: 8:00 - 8:00 Every Day

Route 114, 1/4 mile N off 202
Henniker, NH 428-3444

SOUTH NEWBURY CAPE



SOUTH NEWBURY. Room for expansion with this two bedroom, 1 bath Cape with fireplace in living room. Large porch. Full basement. 4.5 acres. \$125,000

Ann C. Hallahan Real Estate
Route 103 / At Covered Bridge, Bradford

News from the Town Clerk and Tax Collector's office

TOWN CLERK
November 16. Marie Rose Robidoux died.

TAX COLLECTOR
Tax bills were sent out on November 10. If you did not receive your bill, please contact this office. Payment is due by December 15. We have had a good return so far and hope to have 80% collection by the end of the year.

TOWN CLERK/TAX COLLECTOR
The office will be closed on both Christmas Day and New Year's Day. We would like to take this opportunity to wish you and yours the happiest of holiday seasons.

Office hours:
Monday, 2:00-7:00; Tuesday, 8:00-5:00;
Friday, 8:00-noon. Telephone 938-2288,
938-2094. —Sue Pearson



a licensed retirement home

South Sutton Russell Currier, Adm.
938-5111 Deidre Currier, RN

NH Assn of Residential Care Facilities

Bradford Bridge Subscriptions

For those wishing to receive the Bradford Bridge by mail, the annual subscription price is \$12. To subscribe, please send a check to the address below.

The Bradford Bridge
P.O. Box 463
Bradford, NH 03221
Telephone: 938-2286

STAFF:
Nancy Scribner, Editor & Publisher
Louise Signorino, Calendar Editor
Thomas Scribner, Advertising Manager
John Signorino, Treasurer
Vern & Marion Hall, Subscriptions
Gene Schmidt, Advertising Sales
Beth Rodd, Classified Ad Rep
Janice Pickman, Distribution Manager
Suzanne Vitale, Reporter
Sherry Chomitz, Reporter
Milly Kittredge, Archivist
Mildred Schmidt, Contributor
Fred Winch, Contributor
Audrey V. Sylvester, Contributor
Maggi Ainslie, Contributor
Luanne Mayo, Contributor
Pauline Dishmon, Contributor
Clare Bensley, Contributor
Sandy Wadlington, Contributor

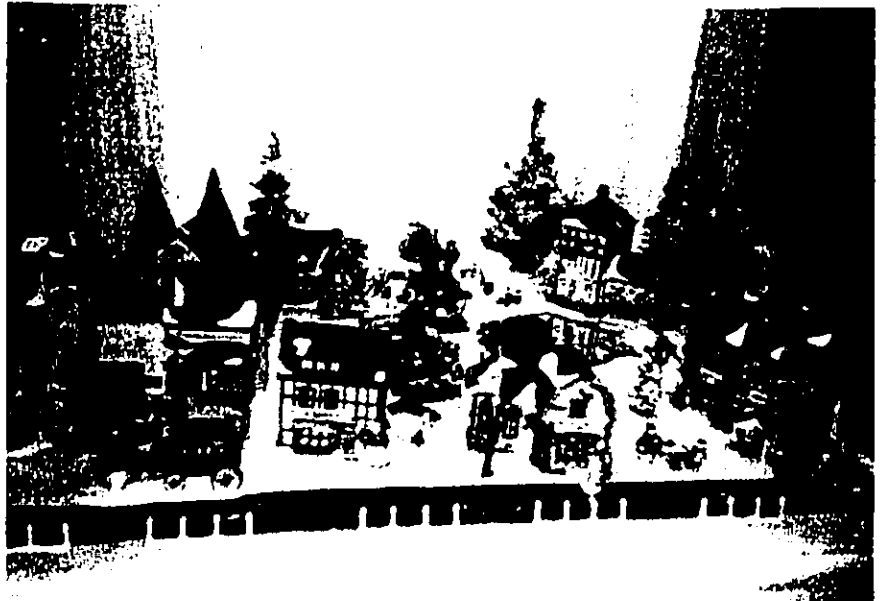
Messiah Sing-In and Caroling

On Sunday, December 3, 3:30-5:30 pm, the 2nd Annual Messiah Sing-In and Community Caroling will be held at the First Baptist Church. Bring the family and a copy of *The Messiah* (limited copies available). Ernie Mills will be the conductor; Joe Chapline, organist. There is no charge and refreshments will be served. Sponsored by Family & Friends Garage.

Fireside storytelling at the Rosewood

At the Rosewood Country Inn, an historic Victorian inn, guests can enjoy a cozy evening of fireside storytelling, wassail, and English trifle. On Saturdays, December 3, 9 and 16, the Rosewood will hold its fourth annual "Dickens Christmas Weekends." professional yarnspinners will entertain with tales of Christmases past. A "groaning board" of hors d'oeuvres and holiday desserts will be served.

Advance reservations are required. The cost is \$25 per person. For more information or reservations, call Lesley Marquis at 938-5253.



Dickens Village. Foxchase Retirement Home cordially invites young and old to see a model of 1840's London, featuring characters from Dickens' novels. Open houses are Sundays, December 3, 10 & 17 from 2:00-4:00 and Wednesdays, December 6, 13, & 20, 2:00-4:00 and 7:00-8:00 pm. Groups may call for other times. Voluntary donations benefit the Visiting Nurse Food Pantry. Foxchase is located left off Route 114 in South Sutton.

Have you completed the Master Plan Community Survey?

The Planning Board's Master Plan Update Committee will soon begin the next phase of preparation for the 1996 Master Plan for the Town of Bradford. The Master Plan is the document which forms the basis and sets the course for town planning over the next five to ten years.

More than fifty volunteers have distributed the Community Opinion Surveys in the neighborhoods. More than 400 surveys were mailed to non-resident taxpayers. **COULD WE HAVE MISSED YOU?**

If we have, it's not too late. You may pick up a survey at any of three locations until

December 9: Selectmen's office, Town Clerk's office, or Brown Memorial Library.

While the process of data entry is currently underway, if you return your completed survey to the Planning Board (at the Selectmen's office) before December 15, your opinion will be included in the survey results. If you have questions about the survey or about the process, please phone Dick Whall at 938-2650 or Glen Mayo at 938-5425.

The Master Plan Update Committee meets officially at 9:00 am on the first Wednesday of each month at the Fiske House. Interested townspeople are welcome to attend.

Appleseed Catering Service
Now's the time to Reserve a date for your HOLIDAY PARTY
938-2100
At our restaurant or your home.

\$\$ XTRA CASH \$\$
INTRODUCING A GREAT NEW WAY TO SAVE...AT BRADFORD IGA
Here's how XTRA CASH works:
1. Pick up a free XTRA CASH saver card at our checkout.
2. You get one XTRA CASH stamp for each \$1.00 you spend.
3. Paste 36 XTRA CASH stamps on a saver card.
4. When you check out, present a filled card for each XTRA CASH special.
XTRA CASH BONUS SPECIALS - SELECT ONE PER FILLED CARD!
A few samples: 2 liter Coca-Cola, 59 cents; IGA dozen large eggs, 49 cents; 10# bag Maine potatoes, 89 cents ... plus many more items. Stop by and check this money-saving program out!

The **Rosewood** Country Inn
CHRISTMAS SPECIAL
\$69 includes our sumptuous "Candlelight & Crystal" Breakfast and our Holiday "Sugarplum Basket"
67 Pleasant View Road
938-5253

NEWBURY CAPE

SOUTH NEWBURY. Expanded cape with 3 to 4 bedrooms and 3 baths, FHW/Oil heat, large country kitchen, fireplace, a two-car garage, 3.05 +/- acres.
Owner relocated **\$165,000**
ELLIOT HANSEN ASSOCIATES
A REAL ESTATE COMPANY
763-9999

Letters

To the editor:

Congratulations to the third graders and teachers in the Bradford Elementary School on the fine scores in the NH State Assessment Test. According to calculations by the KRSD Taxpayers Committee for Excellence in Education, Bradford placed 17th in the state out of 250 schools in combined scores for language arts and mathematics.

The results were tabulated in four categories: advanced proficient, basic, and novice. The KRSD Taxpayers considered advanced, proficient and basic levels as acceptable and novice not acceptable. Our calculation was made by adding the acceptable percentages and subtracting the unacceptable. This approach gives schools credit for achieving basic or above and an incentive to place more emphasis on reducing the number of students in the novice level. We believe that this approach provides a more balanced assessment of the academic quality of education of third graders than the scoring approach used by the *Union Leader*, which added only the advanced and proficient scores.

Had New London (78th place) and Warner (119th place) scored as high as the Bradford school, KRSD would have ranked first among the 36 regional districts. These schools dragged the overall rating of the district down to 8th out of 36 districts.

To Bradford: keep up the good work; ten more points and you would have ranked fifth in the state. To New London and Warner: we urge you to work to improve your poor showing.

Dick Martin
for the KRSD Taxpayers Committee

*Support Bridge
advertisers... they
support the Bridge.*



An 1897 Country Victorian Inn on 3 acres with brook and pond. Six tastefully decorated guest rooms, all with private baths, are ready to accommodate your family and friends this holiday season. The Inn is now available for holiday parties, bridal and baby showers, business meetings, workshops and seminars.

**CANDLELITE
BED & BREAKFAST
INN**

Route 114 & Greenhouse Lane
Bradford 938-5571

Santa's Outlet fundraiser for Bradford-Newbury Kindergarten & Preschool

Come one, come all to our 2nd Annual Santa's Outlet on Saturday, December 16, 2:00-6:00. Come to the Bradford Town Hall and buy Christmas gifts for your loved ones. This fundraiser is geared for preschool through middle-school-aged children. We will be selling low-priced trinkets, beads, bamboozles, and assorted blivets. Shop this year with us and support your favorite school.

Thank you go to Larry Smith, owner of Bradford Crossing, and all his employees for their help during our recent pie sale there, Tom Lombardi and Becky Lehman for the wonderful homemade signs, and Ted and Liz Young for the apple baskets.

Congratulations to Mike Ripberger, Bradford, for winning our Thanksgiving turkey raffle. Enjoy the dinner, Mike. Also congratulations to Helen Mosley, our most incredible ticket seller. A beautiful handmade basket, donated by Susan Kingsbury, was given to Helen. Thanks, Helen.

As the year winds down, the Board of Directors, staff, and parents of BNKP would like to heartily thank the communities of Bradford and Newbury for all their support. We couldn't run our school without you. And in our 25th year, we are proud to continue to provide a quality, low cost educational program for the young children of Bradford and Newbury. Thank you to our teacher, Susan Kingsbury, and teacher's assistant, Jonas Cosgrove, for all their guidance this year.

REACHING HANDS THRIFT SHOP



Respectable Items at
Reasonable Prices

Off Old Warner Road,
Bradford 938-2820

Proverbs
31:20

Tu&Wed 9-1 Th&Fri 12-4 Sat 9-4

GREAT WEEKLY SPECIALS

Love Lights a Tree

The Kearsarge/Lake Sunapee Unit of the American Cancer Society is planning for Christmas with preparations in full swing for a "Love Lights a Tree" ceremony in Bradford on December 17 at 2:30 in the vestry of the First Baptist Church.

"'Love Lights a Tree' will raise funds for cancer research, education and patient services by allowing individuals and businesses to purchase 'love lights' and 'love ornaments' for Christmas trees located throughout the state of New Hampshire," according to Bradford's event chairman, Jim Lawrence.

A donation in honor of or in memory of a special person will be represented by a light or decoration on a special Christmas tree. The names of donors and honorees will be recognized at each tree. This is a dignified and lasting way to honor a special person at this special time of year.

The tree will be located in the vestry of the Bradford First Baptist Church, with the tree lighting ceremony scheduled to launch the season on December 17. While contributions can be made year-round to the Honor Gifts/Memorials Program of the American Cancer Society, special forms are now available for making Love Lights a Tree donations. To obtain a form or to get more information about the project, call Jim Lawrence at 938-5344.

Trans-Medic
TRANSMISSION CLINIC

John McKew
Route 103, Newbury
763-2633

Richard C. Sweet
938-2560

**Sweet
Shelters**

A Certified Energy Crafted Home
Builder

Distinctive Custom Built Homes
Planning & Design Services

Free Estimates
Remodeling & Other
Construction Services

Member National Home Builders Association

News from the Soo-Nipi Audubon Chapter

The Soo-Nipi Audubon Chapter will provide a brief summer interlude on Friday, December 8, 7:30 pm, at St. Andrews Episcopal Church on Gould Road, New London, with a slide program entitled, "Butterflies." Speaker Rebecca Suomala, a butterfly enthusiast, will acquaint the audience with the life cycle of these beautiful winged insects, point out the basics of field identification, and show pictures of some common New Hampshire species.

In addition to her natural history travels throughout the United States filming wildlife with husband Mark, Rebecca also serves as Natural History Services Coordinator for Audubon Society of New Hampshire.

All Soo-Nipi Audubon Chapter programs and activities are open to the public. For more information about this program, call Clare Bensley, 938-5482.

On Saturday, December 16, the Chapter will participate in its sixth annual Christmas Bird Count, a program sponsored by the National Audubon Society. The results of this census will be listed in a publication entitled, "American Birds." Teams of observers will be scheduled to cover the towns of Sunapee, New London, Newbury, Newport, Sutton and Springfield. This Lake Sunapee County Circle is one of 17 established so far in New Hampshire.

Bradford Women's Club update

Our "extra" membership meeting had a wonderful turnout. Everyone enjoyed the lunch provided by the Board and most of all, a good chance to share ideas and socialize. Lynn Horrigan joined Jean Vivian as new members.

We're very happy that Barbara McCartney is recuperating well after her knee surgery.

The Antiques and Craft Fair was a great success. Lots of great workers, including Nancy Hibbard for graphics, tags, raffle tickets, etc.; Jane J. Lucas, Doris Tremblay, Connie Mazol and Clare Bensley on consignments; Marlene Freyler for decorating and workshops; and Jane J. Lucas for publicity. Thanks also to little elves Jean Gaito, Marj Messer, Martha Von Redlich, Elinor Robie, Jan Pickman, Kim Lucas, Barbara Vannata, Barbara McCartney, Milly Kittredge, Doris Tremblay, Sophie Burke, and Caroline Verity. Workers at home Lu Signorino, Amette Leonas, Marion Hopkins, Deb Lamach and all those who donated things for sale. Raffle prizes were donated by Luanne Mayo, Caroline Verity, Clare Bensley, Sue Vitale, Marcia Keller and Betty Hague. Tillie Wheeler, Kathi Messer, and Jan Pickman were in charge of the food pantry. Thanks to all the bakers and workers at the fair.

A special thanks to Ann and Bill Hallahan for the use of their property. To our honorary members, Ron Tremblay, Bill Clinton, and Wacky, I'm forever grateful. If I forgot anyone, it's only on paper, never in my heart. You all made this fair so great, it makes it possible to continue to do good things for our town. Thank you one and all.

Prize winners: Tree, Mrs. Eachus, Sutton Mills; tree shirt, Princilla Danforth; gingerbread house, Richard Trenholm, Sunapee; framed photograph, Ginny Roberts, Contoocook; shawl, Debbie Freyman, Wilmot.

Remember not to cook on December 3. Come to the Continuation of the Fair, purchase your Inn Tour tickets, and have a chili and chowder lunch. Check the calendar for times. Our next meeting will be January 16. Happy Holidays to all.
-Jane Lucas, BWC President

Looking for a few good men and women, by Suzanne C. Vitale

The Peace Corps may be the "hardest job you'll ever love," but Bradford has a service organization that can give you all the satisfaction and pride of the Peace Corps right here at home.

The Bradford Rescue Squad is looking for new volunteers to serve the community. No experience is necessary. All you need is a desire to serve your neighbors.

The Bradford Rescue Squad serves residents of Bradford and parts of Newbury, Sutton and Warner. Squad members live in Bradford, Newbury and Sutton.

Why would anyone want to answer an emergency call in the middle of the night, face bleeding people in pain ... for no pay? It's a question of neighbors caring for neighbors. The result is that you will feel incredibly good about yourself and your fellow squad members—not unlike the Peace Corps.

A 120-hour EMT (Emergency Medical Technician) course will prepare you to handle medical emergencies. The next EMT course will start in January. For more information, call Gail Olson at 938-2446.

Residents are requested to please post their house numbers to be easily seen, so that the Rescue Squad can reach people quickly. Minutes lost searching for a numberless house could result in unnecessary tragedy.

Martin Energy
* * **COAL** * *
Ask about our new & used stoves
Hand Fired Heating Units
938-5531

Mauri's
HAIR DESIGN & TANNING SALON
938-5444
Bradford Corners • Rte 114
HOT NEW TANNING BED!
**Be Warm
Feel Good
Look Great**
Open Monday-Friday 9:00 - 8:00
Sat 9:00 - 3:00, Sun 11:00 - 3:00
Wheelchair accessible
WALK-INS WELCOME

Advent Day
First Baptist Church
Saturday, December 2
10:00 - noon Crafts workshop
Church vestry
10:00 - noon Craft & Bake Sale
Fiske House
4:00 Hanging of the Greens
Ham & Bean Supper
2 sittings 5:30 & 6:30
\$5.00 adults, \$3.00 children

MERRIMACK COUNTY TELEPHONE
Don't miss another message
Call our Telephone Mailbox at (603) 746-9400



Bradford Historical Society notes

The Society's Executive Board will meet on Wednesday, December 6, at 7:30 pm at the home of the President. Members of the Society who have items for the agenda for that meeting should contact any member of the Board.

Elected to serve at the Annual Meeting of the Historical Society, held in October at the Applesed Inn, were: President, Nancy Hibbard; Vice President, Glen Mayo; Recorder, Sue Vitale; Correspondent, Beth Bell; Treasurer, John Forgiel; and Directors, Harriet Douglas, Steve Hansen, Richard Keller, and Fred Winch. Appointed by the Board were Milly Kittredge, Archivist; Milton Brennan, Auditor; and Bernie Lamach, Nominating Chair. Glen Mayo will represent the Union Congregational Society and Frances Winch, the Bradford History Committee.

Our thanks to Milly Kittredge and Dick Violette, who have copied issues of the Lake and Mountain PATHFINDER, dating from 1897 to 1899. Now we can peruse these issues to our hearts' content without fear of wear and tear on a treasure. Please note that because rapid fluctuation in temperature is a hazard in preservation of our archives, the Society's Headquarters will be closed for the winter. Archivist Milly Kittredge will be happy to open the building for your research by appointment, phone 938-5386.

There will be no meeting of the Society in December. January and February meetings will be morning or afternoon sessions to work on our collections. Please watch the *Bridge* for the where and when of those meetings. Happy Holidays!
—Nancy Hibbard



Legislative Report

by Representative Bernie Lamach

For December, I want to first thank my many constituents for their input and comments throughout my first legislative year. Many different concerns were handled, either with pending legislation or by resolving issues with state government.

Well over 800 separate pieces of legislation were sorted through and dealt with last year. I see that we have another 850 bills to manage through the coming year. With five or six months to the normal session year, that becomes more than 141 issues per month ... a sizable load and even greater than past years.

All nature of issues will be investigated and debated, affecting every citizen. Probably the most effort and concern will be to the oversight and fine tuning of the reorganization of the Health and Human Services Dept. and to achieving a balanced budget.

I have sponsored four bills dealing with:

1. Methadone treatment, particularly for pre-natal mothers. N.H. is the only state not allowing some treatment.
2. Redefinition of generators of hazardous waste. A clearer definition is the intent of the law.
3. Requirements to log both electronic copies and paper copies of Rules and Regulations with the state library for public review.
4. Elimination of the credit to gasoline marketers of the reimbursement of road toll money related to vapor shrinkage.

I expect that because of some controversy in each of these bills, they will be carefully analyzed in their various committees.

A good example of local concern working its way through the process is the recent passage of a Senator Gregg-bill that prevents the EPA from withholding highway money from the states while they review and formulate their plans to reduce tailpipe emissions.

You may recall that some local objection to the EPA-mandated plan was initiated during a talk by Glen Wallace of State Environ-

mental Services to the Bradford Business Association in June 1994. These concerns were carried forward into the Science and Technology Committee review of the laws during the 1995 session. Pressure was brought to bear on the Department and Governor Merrill to renegotiate the program with EPA. This was successfully done and allows more time for New Hampshire to come up with a more realistic plan. The threat, though, of the possible loss of other funds, even though unrelated, still hung over the issue. Now federal law has been drafted and is expected to be signed by President Clinton to hold off this harsh action to allow states more leeway in tailoring their plans.

So in a year and a half, the issue worked its way from Bradford to Washington D.C. It was a great satisfaction to me to participate and to see the entire process work as it should. Thanks to the efforts of many individuals.

The interpretation and administration of law into Rules and Regulations comprises almost 80% of the issues I am asked about in state government. I'm pleased to help, but am greatly concerned over this necessity.

In next month's *Bridge*, I'll try to focus on the major issues for the 1996 session. I wish you a memorable holiday season and my thanks for your kindnesses during this past year.

Secretarial Services

Typing
Word Processing
Desktop Publishing
Dictaphone and Fax



Patricia Dugdale 938-5107

MUFFINS ♥ SCONES ♥ COOKIES ♥ TEA CAKES

SPECIALTY GIFTS ♥ TINS ♥ CRUMBLE ♥ CANDY

JELLY BEANS ♥ TORTEE BUTTER CRUNCH ♥ TRAPOTS

The Sweet Patch

Cafe Bakery

MAIL ORDER COOKIES
Lunch Box On-the-Go
OPEN DAILY 6:30-6:00

Route 103 South Newbury
938-2296

♥ GOURMET ICE CREAM ♥ FROZEN YOGURT ♥

DECEMBER SPECIALS!

Cigarettes/carton \$14.69

Bud suitcases \$11.99

Zima 12-pack \$5.83

Season's Greetings!



BRADFORD MARKETPLACE

126 E. Main St.

938-5558

A Point of View

by Luanne Mayo

There is a very pretty navy blue sweatshirt out there, in catalogue land, that has a gold star of Bethlehem, and says "Remember the reason for the season."

Every now and again we sit down and inventory our six daughters and try to figure out where each would come down on a given subject. Our latest round of pondering came about as we were traveling to Thanksgiving dinner and simultaneously trying to compile a Christmas gift list. We started by wondering what would please each of them and drifted into wondering what do each of them really celebrate in December? (I have for a lot of years had problems with the materialism of our American Christmases).

Our listing of the ladies came out: One keeps not only Christmas, but Hanukkah. One, our minister daughter, celebrates Christmas in all its many glorious dimensions and nuances. One celebrates Santa and all of the toys in his sleigh. One drifts along with the flow; one celebrates the family "thing"; and the sixth has a Real Old Fashioned Christmas, with all the stops pulled out. She is the farthest from kith and kin (and snow), and tries to fill her little family with all the stuff of a New England Christmas and her memories of home.

We didn't get very far with our lists; somehow there didn't seem to be much joy in the thought of rushing out into the fray and frenzy. When the girls were little, all of their presents were hand made, doll clothes and toys. There was more joy in the making than in the giving. As they have grown older and further away, it has become harder to produce something that might fit into their varied lives.

Our list languished in the car after we got home; this morning we started over again. Two two-hundred-year-old wide boards are going to our designer/craftman son-in-law and an antique milk can to our Arizona Sara. A little cut glass bowl for their seven year old, who helped me clean a cupboard last summer and learned the difference between cut and pressed glass. An antique block plane will go to her little brother, whose Dad will teach him how to use it. I think we are going to enjoy this one!



Candlelight Christmas Tea. In keeping with the holiday season, the Rosewood Country Inn will hold its fourth annual "Candlelight Christmas Tea" on Sunday, December 10, 4:00-6:00 pm. Harp and flute music will be played by "Simple Gifts."

Donation is \$15 and reservations must be made in advance. All proceeds benefit children in the Kearsarge regional schools. For reservations, contact Lesley Marquis at 938-5253; reservation deadline is December 3.

We must have been sending out waves over the past few weeks. Some of the offspring have been on the phone just now. There has been a sudden change in our direction, the way we approach the coming holy days. We are about to start a new tradition.

We have been invited to celebrate St Nicholas day, the fifth of December. Old St Nick will do his thing, he will bring presents for all of the good little girls and boys, and the naughty ones too. Christmas and Hanukkah are to be kept for celebrating new beginnings and Peace on Earth.

We bid you peace.

**WALCO
MECHANICAL CO.**
REFRIGERATION, HEATING,
AIR CONDITIONING, ELECTRICAL CONTRACTORS
COMMERCIAL • INDUSTRIAL • RESIDENTIAL
SERVICE • SALES • INSTALLATION
MAINTENANCE PROGRAMS
SYSTEM EVALUATIONS
938-2926
BRADFORD, NEW HAMPSHIRE

NEW KEARSARGE CORPORATION

- Reels • Pallets •
- Specialty Wood Products •

NKC Breezy Hill Road, Bradford



Beer & Wine

Delicious Pizza

13 Flavors of PREMIUM ICE CREAM

Pizza Chef of Bradford 938-2600

Corner of Rtes 103 & 114

Bradford Business Association news

The November meeting of the Bradford Business Association was hosted by Les and Marilyn Gordon of the Candlelite Inn. Two new members, Max Recognition Corporation and Sugar River Savings Bank, were welcomed into the Association.

Cary Gladstone from the Department of Resources and Economic Development Business Visitation Program spoke on the results of our survey at the halfway point. The visitation program is designed to link local businesses with a variety of financial, technological, business planning, marketing and job training resources.

An Inn Tour is being sponsored by the Association, with the cooperation of local inns. Members of the committee for this event are Lesley Marquis, Marlene Freyler, and Tom Scriber.

Forms to enter the BBA-sponsored second annual Holiday Decorating Contest are now available at Dodge's Store. Categories include Commercial Exterior Lighting and Decoration, Commercial Interior Lighting and Decoration, and Residential Exterior Lighting and Decoration. Prizes for the residential winners are \$100, \$75, and \$50 savings bonds. Each of the commercial winners will display a silver Revere bowl for the coming year. Entries should be sent to P.O. Box 295 or dropped off at Dodge's Store by December 15. Judging will take place the evening of December 21.

The membership unanimously voted to hold a Bradford Business Fair in February. More information will soon be available on this project, headed by Glen Mayo. The speaker for our January meeting will be Niel Cannon, Capital Regional Development Corporation, who will speak on the Bradford Revolving Loan Fund. "How can we promote business growth in Bradford" will be the topic for a roundtable discussion in February, and the Master Plan Committee will bring us up to speed with their project in March.

Admission to our next meeting, December 18 at the Applesced Inn, is a gift, wrapped and designated boy/girl/age, costing \$10 or less. The "admission" will be distributed to local children in need. There will be a short business meeting, followed by a social hour.



Church News from Lynne E. Hubley

The First Baptist Church will begin its preparation for the Advent season with the celebration of Advent Day on Saturday, December 2. From 10:00 am to noon, children are invited to come to the vestry and decorate cookies, make candy, a beeswax candle and much more. During the same time period, folks in the community are invited to visit the Fiske House, where they will be served free hot coffee and hot cider. Handmade crafts and baked goods, made by the American Baptist Women's Ministry, will be available for purchase. At 4:00 pm, the church will celebrate a "hanging of the greens." Everyone is welcome to help us decorate the church, which will include decorating the Christmas tree in the vestry.

A Ham and Bean Supper will be held that night with two sittings—at 5:30 and at 6:30—in the vestry. Tickets are \$5.00 for adults and \$3.00 for children.

On Friday, December 1, the Women's Christian Guild will have a program consisting of wrapping Christmas presents for some children in our community, along with Christmas caroling, sharing Christmas memories and Christmas goodies. The meeting will be held at 1:15 pm in the vestry.

On Tuesday, December 5, the American Baptist Women's Ministry will hold its meeting at 7:00 pm in the vestry. The program will include: love gift dedication, cookie swap, and a sharing of special Christmas verses, thoughts and traditions. Christmas carols will be sung.

Our two community youth groups will go Christmas caroling on Sunday, December 10 from 12:30-2:00. We will be singing for some of the shut-ins in our community.

During the month of December, the youth groups will be having a "Christmas card delivery" fundraiser for people in the church. Church members are invited to bring their Christmas cards addressed to other

members to the worship service on Sunday mornings. Our youth will "deliver" the cards to the appropriate recipients. People are asked to put the money they would have spent on postage in a container in the narthex to support youth group activities.

On December 17, the Right Hand of Fellowship will be extended to six new members during the worship service. The American Cancer Society will hold a ceremony, entitled "Love Lights a Tree," at the church at 2:30 on the 17th.

Our traditional Candlelight Christmas Eve Service will be held on Sunday, December 24 at 7:00 pm. Children will put on a "Christmas Pageant." We will have special music, including an accordion solo.

Our Diaconate will be coordinating the efforts of putting together Christmas baskets for needy families. Thanks to Bob and Addy Stewart and many other people, 19 Thanksgiving baskets were delivered to needy families the week before Thanksgiving.

It's not too early to start thinking about your act for the Fifth Annual variety show. Tentative dates for the show are March 15 and 16. This year's theme is "Americana." Chorus rehearsals will begin after the first of the year, on Sunday afternoons in the church vestry. Please let Debbie Lamach know if you can participate by being in the chorus or if you have an act.

Angel for the month of December (written by Debbie Lamach): We nominate for Angel of December a very special gentleman in our midst. He supports our church and our ministry through his work with the youth of the Church, through Bible study, through Time with God's Children, Sunday School, ushering, doing handyman duty around the parsonage, encourages our pastor — you name it! He is Fred Hubley.

On behalf of First Baptist Church, we wish all of you a healthy and merry Christmas.

BIRCH LANE LODGES



- * Minutes to Mt. Sunapee, King Ridge & Pat's Peak
- * Color Cable TV - Kitchens Available
- * Reasonable Rates
- * Ski & Stay Package
- * On Snowmobile Trails

On Lake Todd Rte 103, Bradford
Motel - Cottages 938-5475

Carpet ♦ Vinyl ♦ Ceramic Tile ♦ Hardwood ♦ Area Rugs

NEW LONDON ♦ FLOORCRAFT

and Creative Kitchens

Carl & Gail Olson
Route 11, Wilnot Flat

526-2600
800-870-4646

Where are they now? *by Clare Bensley*

What do we know of the descendants of one of Bradford's most distinguished leaders, the Honorable Mason Ware Tappan, and where did they settle after leaving Bradford?

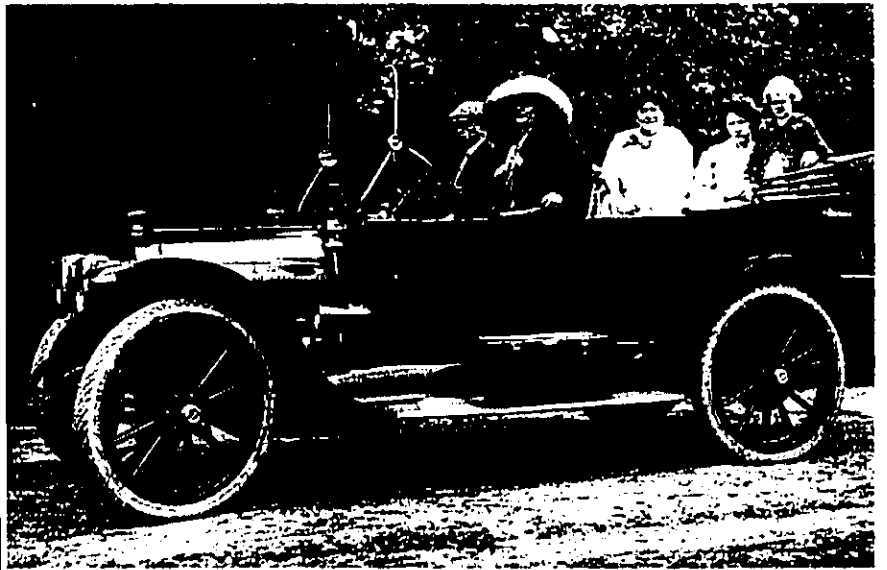
A son, Frank Mason, was born in 1850 to M.W. Tappan and his first wife, Emeline Worth of Sutton. Frank married Ellen Page of Warner and they had a son, Arthur Ware Tappan, who moved to Worcester, Massachusetts. Frank Mason Tappan took his own life in 1899 and nothing is known of the son, Arthur.

Records do not show any children born to Mason and his second wife, Mary Jenkins of Boston.

A third marriage, to Imogene Atwood of Lisbon, produced a daughter, Helen Lucinda in 1883. She appears to have been a real beauty, a socialite, and a gifted musician. She attended the New England Conservatory of Music in Boston and became a concert pianist and amateur actress.

Her marriage in 1904 to Harold Dustin Goodenough of Brighton, Massachusetts, was declared to be the "marriage of the century." The Baptist Church in Bradford was filled with Boston celebrities who arrived in town via a string of private Pullman cars. The reception was held at the Bradford Inn, which was also grandly decorated. Others present were townspeople and associates of Helen's father from his days as the state's Attorney General. Sadly, M.W. Tappan died when his daughter was three years old.

Helen and Harold Goodenough moved to Brighton, where their only child, a son,



In this 1913 photo, Harold and Helen (Tappan) Goodenough sit in the front seat. Mrs. Mason W. Tappan is seated in the rear with Tappan Goodenough and his nurse. Photo courtesy of Steve Hansen.

Mason Tappan, known as "Tap," was born. In this picture, he is seated in the back with his nurse; his picture also appears in *Two Hundred Plus* on page 50, with the brothers Julian and Ralph Dodge at the dedication of the Lafayette Plaque in 1913. Judging by the curls and outfits, one might surmise that the auto picture was taken of the family when they drove back to Bradford for the occasion.

Helen Tappan Goodenough moved to Beacon Hill after her husband's death and lived there to the ripe old age of 91. Her son Tap moved to Yarmouthport, Cape Cod, and was living there at the time of his mother's death in 1974. He was Outdoor Editor of *The Patriot*

Ledge. A call to information in that town had no record of him, so we must assume he has since passed away. The last record shows that he had a daughter, Gay Goodenough, who became an actress in New York and Hollywood.

Video Care & Repair *Specializing in Service and Repair of VCR's and Camcorders*

We moved! But only 18 miles.
Fountain Square, Contoocook 746-4848

Merrimack Farm & Country Store

Bradford, NH 938-2211

CHRISTMAS FINERY

Trees & Roping

Christmas Wreaths

Mistletoe & Holly

Poinsettias & Cyclamen

Zygocactus & Topiary

Gerbera Daisies

Paper Whites



The Golden Pineapple

Join the HOLIDAY FUN!

Signature Mugs

Yankee Candles

Lang Calendars

Rubber Stamps

Hartstone Pottery

Dept. 56 Lighted Houses

Byer's Choice Carolers

Christopher Radko Ornaments

Hampshire Pewter

Original Ornaments

Quality Gift in Every Price Range

SAT, DEC. 9, 2:00-5:00, FREE DEEP MUSCLE RELAXING "CHAIR MASSAGES"

A Gift from The Golden Pineapple is a Reflection of Your Fine Taste.

Be Sure To Pick Up Our Holiday Event Flyer!

428-7982

Holiday Hours! Weekdays 8:30-8:00; Sat&Sun, 9:30-5:30

Senior Days Mon & Tues

Storefront parking

MC/Visa/MA EX/Disc/Checks

Jct US Rte 202/9 & 127

Angels never fear ...by Eleanor Hopwood

Last Thursday I set off for my job at the Sunapee Town Office. In my Coleman lunch box, I put a turkey breast sandwich, two cans of Pepsi, an apple, my special apple corer, and a FreezPak. I placed the lunch box in the back of my car.

As I came out of Melvin Mills Loop and started down Route 103, I heard a rattle. It filled me with dread ... if something were the matter with the car, I would be completely immobilized.

When I reached the intersection with 114, I glanced at my gas gauge and saw that the gas tank was nearly empty. Sometimes I leave work late at night and I didn't want to get stranded. As I turned left onto 114, there was a loud noise, but then it stopped. As I continued down the road, all was quiet. I figured what had been wrong had righted itself, so on I went to the gas station.

While I was pumping gas, a car filled with people drew alongside. The driver opened his window and told me I had dropped my lunch box at the intersection. I looked at the back of the Jeep and saw that I had not put down the hatchback. So the lunch box must have danced around the back of car, making those intermittent noises, before being tossed out.

I have been feeling down lately, so it didn't take much for me to feel "poor me." After I finished pumping the gas, I turned back to the intersection to pick up the remnants of my lunch.

That Coleman has been with me for quite a while and I have fond memories associated with it. The same goes for the apple corer. I only knew the Pepsi, sandwich and apple for a short time, but I had the feeling we'd get on well together.

I parked the car and walked along the roadside, looking down into the ditch to find some clue to the whereabouts of my lunch. Not a scrap in sight. While I was moping along, a pickup truck stopped. The driver asked me if I was all right and could she help. When I told her what happened, she got out of her

truck and helped me look. Then she said she'd drive back along the road to see if she could find any trace. She commented that I would probably never find it; no doubt some driver had picked it up and was sitting somewhere now enjoying the sandwich and Pepsi. She said that if her brother had been following me, that's what he would have done! (I hope I never meet her brother!) Then she drove off.

All the while, I am saying harsh words to my angels. Every morning I pray to them to guard and guide me all day to keep those who would hurt me at bay. How could they have let this happen? I also reprimanded them for not watching my every move. I reminded them that when they took on this assignment, they had been told this was not a part-time job; I need full-time care.

I got back into the Jeep, pondering what to do next. I wasn't ready to give up. Where does one go to report a lost lunch box? Feeling I had to speak to someone, I went to the police station. The officers were out and the door was locked. Since the police station is in the Town Hall, I went over to the Selectmen's office. One of the selectmen, John Signorino, was there working with Kathy, the secretary. When I told them the story, Kathy took it all down. John asked me what kind of sandwich it was. When I told him it was turkey breast, he said I would never see it again. If it had been peanut butter I might, but turkey breast, no.

I laughed and finally proceeded on to my job in Sunapee. I had no lunch that day. Of course, I went on muttering to my angels.

The next morning I had to go to town to run errands. When I returned home, there was a message on my answering machine from Officer Neal Martin, telling me he had my Coleman and to come by the police station to pick it up. When I walked into the office, there it was on the counter. We opened it and nestled inside was the turkey sandwich, two cans of Pepsi, the apple, the corer, and the FreezPak. There wasn't a mark on the cooler and everything was just as I packed it. When

I mentioned to Neal that you'd have thought the cooler would have been dented, he said, "What would you expect from a Coleman. They're made to take punishment." He told me that Bob Selig of Hogg Hill Road had picked it up and brought it in. As I was leaving, Neal said "I guess he was inspired to bring it to the police station."

I got into the car and hugged the box. As I had trudged along the side of the road, I was inspired to go to the police station. As he picked it up, Bob Selig was inspired to bring it to the police station. All the while, I had fussed with the angels. I wasn't watching what I was doing with the hatchback, so I lost the box. When I asked them to bring it back, they had worked with what material they had at hand ... inspiring both of us to go to the police station.

I felt ashamed of myself and of course I apologized for not trusting them more. I have had to do this many times lately. I went home feeling very chastened. But I did have a good lunch ... a turkey breast sandwich, a cored apple and two cans of Pepsi. The FreezPak had kept everything fresh and the Pepsi cold. Hey, John Signorino, I did get my turkey sandwich back!

So now, after giving thanks on Thanksgiving Day and heading into the Season of Angels, I think of how nice it is to live in Bradford, where people really do care. May I wish everyone Merry Christmas, Happy Hanukkah, and a Great New Year!



Mary's Little Lamb

Consignments for Girls & Boys, 0-16

•• CLOTHING - snowsuits, jackets, hats, bunting, 11 bean baby bags, sleepers, jeans, overalls, shirts, turtlenecks, rompers, pajamas, sweaters, dresses, scout uniforms, shoes, sneakers, boots, tap shoes, and special orders for christening gowns.

•• TOYS - mobiles, trikes, books, games, rocking horse, jack-in-the-box, many more Fisher Price & Playakool toys, full line of Jukka wooden toys from Finland, and American porcelain dolls.

•• EQUIPMENT - highchairs, carseats, carriers, strollers, double strollers, portacribs, swings, changing tables, walkers, booster seats, bassinets, bicycle seats, tubs, sheets, blankets, bottles, and special orders for baby joggers.

Don't know the size? A gift certificate fits everyone!! There's MUCH MORE!
Browse around,

we'll help you spend less for more!!
Rtes 11/103, Guild (16 Hale St)
863-3027 Open 10:00-4:00 Tues - Sat



APPLESEED RESTAURANT

SEASON'S GREETINGS

Come spend a relaxing evening
with us during the holiday rush.



And don't forget our New Year's Eve Buffet.

Closed Christmas Day ... Member, Bradford Business Association
938-2100

Blue News ... report from the Police Department
by Kathy Grindle

We are pleased to report that all officers attending the Part-Time Police Academy this fall have successfully completed their courses. All have graduated and are certified by the State of New Hampshire. Congratulations to Officers Kris Dupuis, Richard Simmons, and Tom Wade.

One of our newest officers, Tom Wade, was recently the recipient of a bullet-proof vest, awarded through the We Care Foundation of the Law Enforcement Television Network. Through the Department, all officers were entered into the drawing held by the We Care Foundation on L&TN. Two names are drawn each day and each winner is awarded a bullet-proof vest. If the officer leaves the Department, the vest stays so another officer can take advantage of its protection. Each officer's name remains in the drawing until it is pulled. This drawing is open to any officer from any department that does not provide vests to its personnel. It is an excellent way for departments on tight budgets to outfit its officers with the most up-to-date body armor.

Total number of incidents as of November 29 was 133, with 25 assists, 12 unsecured premises, 7 animal complaints, 7 suspicious persons/motor vehicles, 5 motor vehicle accidents, 5 alarms, and 2 reports of criminal mischief. The Dept. also issued 74 traffic warnings and 17 summonses.

Meet the officers of the Bradford Police Department



Sergeant Neal Martin



Patrolman Robert MacLeod



Patrolman Shawn Spooner



Patrolman David Leathers



Patrolman Richard Simmons



Patrolman Thomas Wade



Al Grindle, Police Chief



Kathy Grindle, Secretary



Patrolman Kris Dupuis



Animal Control Officer Cindy Fitton

In and About the KRSD, by Dick Keller, Bradford School Board Rep

Overlooking the overcrowding and the uncertainties of continuing as a school system, life goes on at the high school. In spite of the external political pressures, staff and students continue with outstanding performance in a variety of areas.

For example, the KRSD team of students, led by English teacher Joanne Tulonen, captured first place at the Hanover Quiz Bowl, where they outscored some 24 teams from across New Hampshire and Vermont. The same team, which includes Damian Canuto, team captain, Sean Carmach, Jeff Daigle, Sara Leadbeater, Ann Springsteen, and Rory St. Lawrence, bowed to Plymouth High School in the second round of the Granite State Challenge. In 1994, another outstanding team represented Kearsarge in the Super Granite State Challenge, also under Ms. Tulonen's guidance.

The drama club presented Guernsey LePelley's three-act play, *Absolutely Murder*. 43 students took part in the production, with 14 appearing on stage and the balance playing behind the scenes roles. A delightful performance by Laura Dunlop, who played Lorna, a patient at Dr. Hooker's mental institution, almost stole the show. Starring roles were played by Betsy St. Lawrence, in the role of Kate, and Jake Hummel as Sky. Neat job by all, with much thanks to Nancy

O'Leary (instructional aide) as director and Dave Levine (computer aide) as technical director.

The wide range of student activities could fill this whole article, but let me at least mention the superior season the girls' soccer team had. Bob Andrews coached the team to the finals with 16 victories, only to be brought down in the second half of the class I (school size 500-1000 students) championship game against Souhegan. Goaltender Erica Harper deserves special recognition for her superb goaltending throughout the season.

And it's down to minor adjustments on block scheduling, a move to provide longer periods of time for presenting course work. In addition to intensifying and broadening the method of delivery, this change will improve the potential to better integrate the academic side of Kearsarge with vocational school offerings. This will improve the education of those students not planning to continue on to college.

Key issues discussed at the November 2 Board meeting included approval of bids and field trip applications, discussions of the California Achievement Test (CAT) results for 1995 and the school sports programs, and reports from several subcommittees.

Valley Transportation, from Bradford, was awarded a two-year extension to its present contract, avoiding any increase in the cost of this service. Johnson and Dix was the successful bidder for fuel oil delivery.

High school band and chorus director Ernie Mills received Board approval for participation at the American Music Festival in Florida. French teacher Jean Vigneault will lead trips to Quebec and France. These trips are tied into vacation periods.

The CATs, given to grades 3 through 10, show Kearsarge scores in the mid-70%, based on the mean national percentile. The real value of the tests, however, is to indicate district-wide and specific students strengths and weaknesses. Strengths show up in science, language expression, reading comprehension, and vocabulary, while math computation, spelling, and language mechanics remain on the weaker side and will require additional focus.

Head coach Marty Brown reported that about 30% of high school students participate in varsity and junior varsity sports and a large percentage participate at the middle school through intramural programs. He would like to see a greater variety of sports offered, including swimming, volleyball, and more intramurals, to provide additional after school activities for students.

At the recommendation of the finance subcommittee, the Board moved to notify Marriott that the District will not be contracting out its maintenance service. Under a reorganized plan, central purchasing of materials and centralized support will be provided, but general upkeep of the buildings will be the responsibility of the principals.

The budget process is again underway, as are negotiations with the teachers' union. A meeting with the Joint Board of Selectmen, scheduled for November 14, was postponed due to slippery roads, and rescheduled for the 28th. This series of meetings will address the facility needs of the District. Stay tuned



**THERE'S STILL TIME ...
TO GET YOUR
CHRISTMAS CARDS
BUSINESS GIFTS
1996 CALENDARS
Call Now for Fast Delivery!
PROFILE PROMOTIONS**

Clark Phillips 938-5400
NH Toll-Free 1-800-371-5400



**24 HOUR SELF SERVICE
GASOLINE & DIESEL PUMPS**

Serving the area's heating needs for
more than 51 years

**FUEL OILS & LP GAS
COMPLETE HEATING SERVICE**

938-5335

Route 114, Bradford • Hall Ave., Henniker ...428-3333

927-4973

Route 114
North Sutton

ALL & AWL REPAIR

Small Engine Sales & Service
Tractors

Harness & Tack Repair

Art, Kirk, Lynne & Kris Chadwick
Hours: Mon-Fri 7:30-5:00, Sat til 1:00

League of New Hampshire Craftsmen holds third Winter Craft Festival

On December 8, 9, and 10, the League of New Hampshire Craftsmen will celebrate the holiday season with its third annual Winter Craft Festival at the Center of New Hampshire in Manchester. Hours are Friday, 4:00-7:00; Saturday, 10:00-6:00; and Sunday, 10:00-5:00.

This year's Festival will offer 80 crafts booths featuring the work of the League's state-juried members, along with the Shop at the Fair, a cooperative booth exhibiting the work of 40-50 League members.

Among the many holiday gift ideas available will be gold, silver and pewter jewelry, traditional and contemporary pottery, hand-blown glass, leather belts, handbags and sleigh bells, wooden clocks and boxes, and vases, bird carvings, prints, handwoven clothing and accessories, and dried herbal wreaths and topiaries. The League's 1995 Limited Edition Annual Ornament, entitled "Snowflake," by League jeweler Karen Twombly of Conway, will also be available.

At Work ~ At Home

by Audrey V. Sylvester

Can you guess why a couple with two young children move from south Texas to the mill section of Bradford's West Main Street? Most of us couldn't imagine making such a life change. Meet our new innkeeper neighbors—Jim and Lynn Horigan and their children, Cody and George, who settled into their home at *The Thistle and Shamrock Inn*, the new name for the former Bradford Inn on November 1.

Two years ago, the couple found the Inn advertised for sale in a bed and breakfast brochure. At the time, Boston-born Jim was manager and chef for a 45-member family compound in south Texas; Alaska-born Lynn was working at a mortgage company. Both had extensive



cooking and managing experience: Jim as a gourmet chef in Jackson, Wyoming; Lynn as a cook for a 37-member farm family in north-east Missouri, where she tended chickens, cows, and became proficient at canning produce and butchering livestock.

As professional chefs, they recognized the special ingredients that came with the Bradford Inn. The time to cook the idea was ideal. The Inn came in the right size, in a beautiful setting in a varied climate with snow and more moderate temperatures than those of south Texas. The recipe contained potential for good seasonal business...leaf peepers, antiquers, skiers...in a climate where fresh air is available without continuous air conditioned filtration.

As a teenager, Jim's culinary skills developed as a survival technique. His hungry sisters accommodated their working mom's schedule by starting dinner before she came home. When they went off to college, Jim mulled over his choices—either pitch in and eat early or wait. He remembered, "One night when she came home, I said 'Never mind changing your clothes. Let's sit down. Dinner is ready.'" After high school, Jim studied at the Culinary Institute in New Haven, Connecticut—training which set his course from 1967 to 1971 when he served as a commissary man in the U.S. Navy. With an understated appreciation of the situation, he said, "When on board ship, you cook ... very carefully. It was fun chasing eggs from one side of the grill to the other and cooking when the ovens were moving." He remembered one Christmas dinner which became a moveable feast when the captain decided to go into maneuvers in big swells. Dinner crashed around the room. Lynn added, "It was an absolute wall painting." One tour of duty took him to the rivers of Vietnam on a supply ship. He commented, "It was interesting. We were never attacked, but there was quite a bit of action around us."

"Hablá usted español?" (Do you speak Spanish?) Neither Lynn nor Jim did when each arrived in south Texas. As managers, they recognized the need to be fluent in Spanish so they could communicate clearly when dealing with local merchants, suppliers, maintenance personnel, and carpenters. The couple met during the Spanish class, where they discovered they shared life experiences and dreams for the future. That was 11 years ago.

Today these resilient flexible innkeepers are joyous as they plan their Thistle and Shamrock Inn. When they reopen by Christmas, meals will be served in the main dining room. Sitting amidst stacked chairs and tables in a make-shift space, Lynn worries whether the curtains will be sewn in time. Fabric delivery had been delayed. Jim spurs her on: "The fabric will arrive. They'll be ready on time." When he doubts meeting his own work schedule, she playfully rejoins, "It can be done." With Jim's Boston brothers helping, it will be done... "if everything falls into place."

With a personal collection of 200 cookbooks, Jim promises to create a varied and changeable menu. Although special seasons and sauces are kept secret, even from his wife, Jim is more than willing to give away recipes. There is a hitch ... his recipes only list ingredients, with no directions for preparation.

On December 3, at the Christmas in the Country inn tour, you will be able to see the new look at the old Bradford Inn, sample Jim's cooking, and meet the new innkeepers. This savvy couple is eager to become a part of the community.


The Family Salon

Don't you feel PALE?
It's amazing how good
a little color can make you
look and feel.

TANNING

Call for special package deals.

The Gallery, Newport Road, New London
526-8056

AutoCraft
Complete Automotive Services



State Inspections
24 Hr Road Service & Towing

938-2623
We stock Cooper Tires
with Road Hazard Warranty

Selectmen's meetings in November

November 6. Selectmen approved a bond permit for Howes' Auto, enabling Richard Howes to operate a wholesale auto dealership at the Car Care of Bradford business. Howes said his wholesale operation would rarely involve placing cars at the Bradford location; mainly he needed a business address.

Selectmen opened bids for town properties offered for sale in October. There were no bids on two West Road parcels. Two bids were received for the Main Street property (the "Milly Jane"); high bidders (with a bid of \$2080) were Richard and Judy Wiloughby, abutters to the east of the property.

The five bids for the Fairgrounds Road bridge repair, ranging between \$84,985 and \$127,000, were discussed. The low bid was \$12,000 higher than the engineer's estimate. Before the contract can be awarded, Selectmen must determine whether the state reimbursement covers 80% of the total cost.

The effect of the cold weather on the sidewalk paving project was discussed, with Selectmen deciding to ask Hopkinton Paving to make minor repairs, patch the worst spots, and wait until spring to complete the job.

Library Trustees met to discuss their budget. Selectmen commented that they were following the state's decision not to award raises this year.

Fire Chief Mark Goldberg met to discuss the fire department budget. He commented that the Car Care of Bradford building where the Burdette auctions are being held does not meet the fire safety code. Owner Jerry Holloway had been asked in April to make a number of modifications to meet the code. Goldberg asked that no further auctions be held until the requirements have been met. Selectmen agreed to inform Bob Burdette.

The New London Board of Selectmen met to discuss their determination to withdraw New London from the Kearsarge Regional School District. They reviewed their town survey and consultant's report, saying they believe their townspeople support withdrawal, as long as they pay for the remaining towns' shortfall and approval is received from the NH Dept. of Education. When they asked if the Bradford Selectmen were ready to resolve the issue, Selectmen responded that the quality of education must not be compromised and the town's shortfall must be covered. New London Selectmen said they still have to complete their proposal and will notify the Joint Board of Selectmen when it is ready.

November 9. Selectmen met in special session to open bids for town hall repairs. However, no bids were received.

Having received assurances from the state that reimbursement for the Fairgrounds Road

bridge repairs would be covered at 80% of the cost, Selectmen awarded the contract to United Construction, of Newport, for \$84,985.

November 13. Tim Bates and Walter Mitchell met regarding the Selectmen's decision to have them continue to represent the town with their new firm, Mitchell and Bates. Several pending legal matters were discussed.

Mark Goldberg, Fire Chief, and Carl Olson, Rescue Squad, met to discuss their budgets. Olson discussed the need for a capital reserve fund to cover the cost of a new ambulance in the future; he suggested \$5,000 a year.

The lack of bids for the town hall repairs was discussed; Eastman Steere, chairman of the Facilities Committee, will be contacted for suggestions.

November 14. Selectmen met with Charles Bourgault, of United Construction Corp., and Tom Gallery, Hoyle, Tanner & Associates, to sign the contract for the Fairgrounds Road bridge repairs and to discuss scheduling details. Bourgault stated that they will probably be unable to complete the final paving by December 31 due to weather constraints. Should this happen, they will provide a temporary cover and complete the paving in the spring. Selectmen said this was acceptable.

November 20. Perry Teele reported on deed research he had completed concerning ownership of the parking lot next to the church. He found that the cemetery was deeded to the town, but not the parking lot. He said there was a long-standing agreement that the parking lot would be plowed by the town and in return would be available for public use. However, he has not found an agreement document and suggested the Selectmen prepare an agreement now.

Dick Whall and Dan Coolidge met to discuss the town offices' need for a computer upgrade. Upgrading the computer's capability is necessary before the municipal software can be upgraded.

Eastman Steere discussed the town hall renovation project. It is necessary to encumber

money that was appropriated for the project by the end of the year or the authorization to spend it will expire. Steere has contacted several local contractors, asking them to have bids for next Monday night. Concern was expressed over water in the Central School, demonstrating that grading was not sufficient to eliminate the drainage problem.

Bob Burdette met to discuss the letter he had received from the Selectmen telling him to stop holding auctions at Car Care of Bradford because fire code violations have not been corrected. He asked that they extend his use of the building for one week, to enable him to hold three previously advertised auctions. He said Saturday, November 25, would be his last auction at that site. Selectmen approved his request, expressing reservations over liability issues and requiring that he limit his attendees to the 49 allowed by fire regulations.

November 27. A recently constituted Town Safety Committee, required by the state's Workers Compensation Insurance, met to discuss the Workplace Safety Plan, which must be in place by January 1, 1996. The committee is made up of representatives from all town departments. Members Parker McCartney, Ken Anderson, and Rob McLeod discussed establishing accident prevention procedures, as well as how to collect the necessary information to meet the deadline.

Eastman Steere presented a proposal from Bruss Construction for the various Town Hall upgrade projects. Selectmen accepted their bid for the handicapped toilet and upgrading the rear stairwell. Steere was asked to continue looking for an acceptable bid for the handicapped ramp.

Selectmen set December 18th to hold several public hearings to deal with changes in the personnel policy and the ordinance dealing with road maintenance and inclement weather issues. Draft copies of the changes will be posted prior to the hearings.

STEWART AGENCY

REAL ESTATE INSURANCE

- Residential
- Commercial
- Land
- Homeowners
- Automobile
- Liability

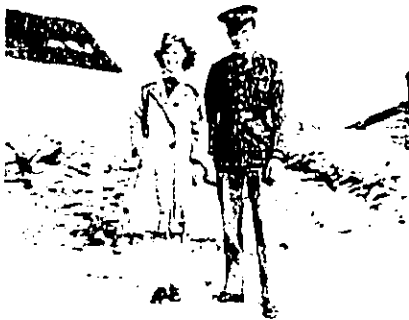
Robert C. Stewart, GRI Robert Stewart, Jr. Real Estate Sales
Michelle Meany, Sales Rep & Licensed Septic System Designer



MAIN STREET, BRADFORD

938-2255 OR 938-2256

A COMPLETE REAL ESTATE
& INSURANCE CENTER



**World War II photograph.....
Guess who?!**

One person still lives in town, one usually visits School Days at the Center. These neighbors were born close in both time and place. One came sooner than expected and an emergency use was made of the other's baby clothes. The photo was taken at Bradford Center, probably in 1942.
-Milly Kittredge

Answer on page 18.

Bradford Squares' Snowflake Dance

The Bradford Squares will hold their Snowflake Dance on December 9, 8:00-11:00 at the Bradford Town Hall. Skip LeBlanc is the caller for this Mainstream Dance with two Plus Tips. Doris T-Bow is cuer for the Round Dancing. The public is invited to watch with no admission.

I.G.A. offers outlet for local artists and entrepreneurs

Are you a local artist/entrepreneur looking for an outlet to sell your wares? The Bradford IGA is very interested in offering more products to our customers. Please stop by or call 938-2229 and speak with Barbara.

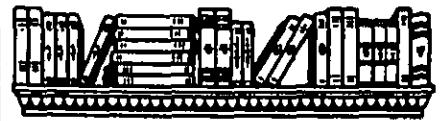
Local artists now selling their products at IGA include:

- Dream Catchers
- Breads
- Sauces
- Dry Mixes
- Barretts, graphic products, and more.



**SILVER BEAR
TREE SERVICE**
Route 114, Bradford
Est 1975

TOM WILKINS Insured for your protection
Lic. Arborist #144 Call for estimate
Pesticide License NHPC-121 938-2300



**BOOK REVIEW
by Pauline Dishmon**

DEAD OPPOSITE

by Geoffrey Douglas
Henry Holt & Co., NY, 1995
Available at Brown Memorial Library

Early the morning of February 17, 1991, a Yale University student, Christian Prince, 19, was killed on a New Haven (CT) street. After two trials, two years apart, James Duncan Fleming, a 16-year-old gang member, was sentenced to prison for Prince's murder.

The deceased was the son of a prominent lawyer in Washington, D.C. His family lived in Chevy Chase, Maryland. According to Douglas, Prince had "high privilege, average talent, who took study and sports seriously." In high school, he was known to have helped another student enter rehabilitation to shake a drug habit.

Dunc Fleming is described as "an angry and desperate youth whose life careened almost daily between jail and death." When his mother moved to New Haven in the 1950's, residents were from many ethnic backgrounds. All got along fine. Most worked for Olin Industries, which ceased operations in 1981.

In his book, Douglas indicates there are roughly 50,000 people in New Haven living at a poverty level. The student dropout rate is the highest in the state. Through interviews with parents, siblings, friends and teachers of both young men associated with this true story, he leaves no stone unturned in providing backgrounds and giving life to real characters. In a conversation with one of Dunc's friends, he learns how kids get into selling drugs ... *easy pay with little work*. "This kinds of thinking is ravaging" family life in large cities, Douglas says, pointing out that many businesses wouldn't survive without drug money. For some, he found, it's as much as half the year's receipts.

To read the author's solid interviews and researched facts, one discovers the hurdles placed in the paths of families who are under-skilled, unemployed and feeling hopeless. *Dead Opposite*, a book mirroring much of what goes on in America's inner cities, should be read by all who care about humanity.

Douglas is a New Hampshire resident.

Bradford



Mon - Sat 8:00 - 8:00, Sun 8:00 - 5:00
938-2229

A Family-Owned Business Serving the Bradford Community since 1901

**FRESH MEATS
PRODUCE - Deli
BEAR - WINE
GRINDERS & SALADS
MADE FRESH Daily
MEGABUCKS
INSTANT TICKETS**

AWARD WINNING RESTAURANT



Certified Angus Steak
Real Hickory Smoked BBQ
Prime Rib - Freshest of Seafood
Open Daily 11-9 PM Fri & Sat. 11-10 PM

RESERVATIONS ACCEPTED
428-7007

ALL CREDIT CARDS
VISA MC AMEX

Library Lantern

by Maggi Ainslie

1995 at Brown Memorial Library was an unforgettable year! You might call it the Year of Many Meetings! The Trustees and the Building Committee held and attended many meetings. Two public meetings were held, led by Peter Tennant of Tennant/Wallace, Manchester, the architect chosen to help with the site decision and to show the possibilities at each location. Attendance and interest was high. Having a chance to listen to how people felt about the project, voicing their concerns, and telling us how they perceive their library was just what we had hoped the meetings would bring out. Wherever the library is located in the future, it is very reassuring to know that we all want the best possible library for our town.

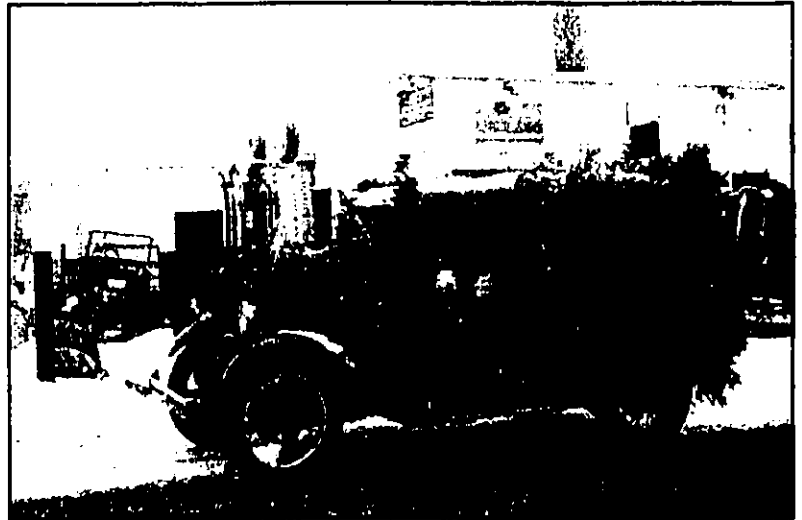
Stop by and see our special Christmas exhibit - items representing the Twelve Days of Christmas, quilled by Barbara Hall, Library Trustee.

This is the month to read the *Polar Express* to someone. Remember the wonderful story by O. Henry about the young couple and what they sacrificed for each other at Christmas? (Gift of the Magi) BML has a great collection of holiday stories—share one with someone special.

Our wish is for each of you to have a healthy and happy holiday season. Thank you for the library support shown throughout the year.

THEN AND NOW

by Sandy Wadlington, photo from Steve Hansen



During the 1920's, the town of Bradford put on a winter carnival every year. Cars, decorated for the festivities, proceeded up Main Street. This car was photographed in front of what is now Car Care of Bradford.

Mike's
 Floorsanding & Refinishing
 We also install all types of hard and softwood flooring.
 763-9630
 Michael J. Signorino 938-2608

Fresh Meats & Produce
Fresh Fish
Fresh Deli Items

CRICENTIS
 Quality - Service - Integrity

New London 526-6951

JOHN FORGIEL
 Certified Public Accountant

Quality tax & accounting services.
Year round.

Call for an appointment.
 Member of AICPA, NHSCPA, and the Bradford Business Assoc.

(603) 938-JOHN (5646)
 Bradford, NH

Que Pasa
 AWARD-WINNING CHILI

FINE MEXICAN DINING / TAKE OUT
Daily Specials - Vegetarian Entrees

Serving Beer, Wine & Margaritas
OPEN DAILY

Rte 114, Henniker Inn Building 428-TACO (8226)

THE COZY CORNER

by Mildred Schmidt



For those of us who don't "do pies," you might like to try this recipe. I've made it several times. The result is a delightful, tasty pie without having to make crusts. Serving this with ice cream makes it a special dish.

May you have happiness and joy before, during and after the holidays — I wish you peace. Merry Christmas and a happy and healthy New Year.

Dutch Apple Pie

- | | |
|---------------|---------------------|
| 8 tart apples | 1 tsp sugar |
| 1 1/2 C flour | 1/2 C vegetable oil |
| 1/2 tsp salt | 2 Tbsp milk |

Peel and core apples, thinly sliced. Sift flour, salt and sugar into a 9" or 10" pie plate. Combine oil and milk in a measuring cup, whip with fork to blend. Pour all at once over flour mixture. Mix with fork until dampened. Pat out to cover bottom of pan; push dough up along sides of pan to depth of about one inch.

Streusel: Mix 3/4 cup sugar, 2 Tbsp flour, 1/4 tsp salt in bowl. Use a pastry blender or fork to cut in 2 Tbsp butter or margarine until mixture is crumbly.

Arrange apples over pastry. Sprinkle streusel over top. Bake in 425° oven for 40-45 minutes or until pastry has browned. Makes 6 servings.

Forest Society to hold holiday open house

The Society for the Protection of New Hampshire Forests will be holding its annual Holiday Open House on Saturday, December 2 and Sunday, December 3 from 10:00-4:00 at its Conservation Center in East Concord. The celebration of natural Christmas trees will continue the following weekend, December 9 and 10, at the same time and location. Christmas trees from the Society's North Country farm and hand-decorated balsam wreaths will be available for sale, and visitors can take a horse-drawn sleigh ride along the Merrimack River. The Forest Society Gift Shop, which features fine gifts made from wood, will be open as well. Refreshments will be served. Reservations for the sleigh rides, which begin at 11:00 am, are required. Cost for the rides is \$6 for adults, \$3 for children. For reservations and more information, please call Trish Churchill at 224-9945.

"This is a great way for families to start off their holidays," notes Dan Sundquist, education director for the Society. "Our trees are award-winning, blue-ribbon quality firs and pines—perfect for a New England celebration. And the sleigh ride, with its jingle bells and the frost in the air, is a great way to get into the spirit of the season." A staff person will be on board the sleigh as it glides along the banks of the Merrimack River, to answer questions about the Forest Society and its 90-acre riverside reservation.

All proceeds from the sale of the Christmas trees and wreaths, as well as the Gift Shop, help fund the Society's environmental education programs and land protection efforts.

DUMONT'S BARBER SHOP
 Wednesdays 8:00 -6:00
 Main Street Denis Dumont, Owner

428-7076
Wright Travel
 WORLDWIDE TRAVEL ARRANGEMENTS
 Henniker Mini-Mall Nancy Wright
 Main St., Henniker Manager

CASH
24 Hours A Day!

MAC
 Main Street, Bradford
 938-2277

LAKE SUNAPEE BANK
 Established 1848

MEMBER FDIC
 Deposits are insured by the Federal Deposit Insurance Corporation.

800-281-5772

R.L. DODGE CO.
 SINCE 1843
GENERAL STORE
 Main St., Bradford, N.H. 03211

What you need is on the corner!

Gift wrap
 Christmas decor
 Tree stands
 Party Goods
 Mistletoe
 Candles
 Gifts

**HISTORICAL GLIMPSES from
the Kearsarge Independent,
selected by Sandy Wadlington**

100 years ago ... December 1895

The weather, the stores, the general aspect of the community seem to indicate that Christmas is near at hand. May it be the brightest and best the town has ever witnessed.

One of the most attractive places in our town is the millinery and fancy goods store of Mrs. Hall. Handsome hats, exquisite bonnets, dainty fancy articles of every variety arranged in the most artistic style make this pretty store a good place to go. In addition, one is always sure of a cordial greeting, polite attention, and reasonable prices.

50 years ago ... December 1945

Bradford Women's Club is sponsoring a dance in Bradford Town Hall Friday, 8 PM, with the Hugh Flanders Orchestra. Dress optional, special events during evening, spot dances, prize waltzes, refreshments. A holiday get together for young and old whether you dance or not.

Answer to page 15 photo quiz.

Clara Heselton Digilio and Robert (Buddy) George




**...and from Bradford Historical
Society materials,
selected by Milly Kittredge**

December 1859. Mason W. Tappan was a member of the U.S. Congress and paid a bill of \$3.50 at the Astor House. His fare from New York to Washington was \$7.50. An avid abolitionist, he also tipped the servants well.

1899. On November 30, 1899, the Winslow House Hotel on the Wilnot side of Mt. Kearsarge burned to the ground. Cause of the fire was unknown. The flames were visible for miles, and early risers in Bradford (3:00 am onward) could see the light.

The Nothing Changes....Heard It Before....Deja Vu Department

1965 Remodeling of the Town Hall: the old garage at the rear was removed, rusted chemical tanks removed for a furnace room, chimney torn down, well drilled to 260 feet, dry walls and ceiling constructed in the area formerly used as a wood shed, and plumbing into the men's and women's rest room installed. Electric panels were updated and excavation behind the town hall prepared for septic and leach bed.



Tom Scribner
Broker

Property Management 938-2286
& Real Estate Sales 763-3030

LIBRARY, continued from page 1

capital improvements program with a five-year schedule for major projects. She emphasized that relocating the police department and upgrading town offices are high-priority issues and should not be postponed to fund a library addition.

The focus of the trustees and the building committee throughout the decision-making period was to determine how best to serve the needs of the community. In addition to holding public meetings, a survey was distributed widely. Survey results were discussed at the November 15 public meeting. Architect Peter Tennant said the surveys revealed that the number one concern of residents was that the town get "the best library at the least cost." Next, respondents felt that the Central School site was preferable because of its size and ability to accommodate additional growth.

During the public meeting, Tennant provided what he emphasized were "preliminary cost estimates" for each site. Using "worst case scenarios," he estimated building an addition on the current site to cost \$634,620, while remodeling the Central School could cost \$643,500 ... figures he said were "insignificantly different." Bliss Dayton reviewed possible bonds and their effect on the tax rate, but emphasized that the numbers would change significantly, depending on the cost of the project, how much was funded through fundraising and capital reserve, and whether grants could be found to cover some portion.

Thistle and Shamrock Inn



& Restaurant

11 West Main Street, Bradford 938-5333

OPENING SOON

Jim and Lynn Horigan, Innkeepers

BRADFORD CROSSING

**The Store
With A SMILE
wishes everyone
Happy Holidays**

NOW OFFERING

U-HAUL

SERVICES

**MAC card
NOW AVAILABLE**



938-2662

GARDENING

by Fred Winch



It is amazing that the day after Thanksgiving, the focus of life changes. The garden shops immediately turn to displays of Christmas trees, wreaths and swags sprout from the sides of shops, amaryllis bulbs, poinsettias appear on counters - and yet it is several days until December arrives. It seems as if everyone turns into Christmas shoppers - or at least they begin to think about THAT DAY.

Just to review the choices for your Christmas Tree: Here in New Hampshire, we have a choice of the "best of the best," since many plantation acres are devoted to one crop - The Tree. The first choice for trees are native Balsam, the introduced Frazier Fir, or the Douglas Fir. Scotch pine is a good runner up. All four of these species hold needles well, have good color choice, and the first, especially, have excellent woody odors. It is a far cry from the days, 50 years or more ago, of seeking the woods tree. I remember that, as a kid in central Massachusetts, we would go out to our woods and the only tree there to cut was the red cedar or "savin." It held needles well, had a very pronounced cedar odor, but dried up quickly since there was no easy way to get moisture to the stem.

For wreaths and swags, the choices are down to about the same varieties, as they offer a good mix of colors and textures. Another possibility is our native white, red and planted scotch pines. For cones, fir and spruce generally shed their cones once cut. Spruce and hemlock drop needles and cones readily, sometimes within five or six days. The cedars, both red and white, may be included for their strong cedar scent.

For the windowsill gardener this time of year, Amaryllis bulbs demonstrate the rewarding rapid growth. Preplanted, pre-potted bulbs are available in flowers of Christmas colors. They may startle you with the growth rate from bulb to flower. How can that bulb produce a tall flower stalk, gigantic flowers, often as many as three to five, last as long and provide vivid colors? It is a good study in nature's ability to show its life cycle. The good thing is that you may produce the same life cycle for several years with proper care. I have had several bulbs that have lasted over the years - if I have not forgotten them, and I must admit that I have.

To keep them from year to year, let the flowers wither and continue to water the plants so that the large strap-like leaves continue to grow to store food in the bulb. They may be relegated to a cool room, a heated to above freezing garage, and kept watered. When the growing season comes, put them outside in a shaded area until fall. Dry the

bulbs until October or November, repot in new soil. Place in a cool area and water until new leaves begin to grow. When the plant is three to six inches tall, bring it into a warm, sunny room and await the results. Usually you will be rewarded with a flush of one to two stalks of one or more buds. These are much more reliable plant to try to re-grown than poinsettias.

Times have changed - the post office used to "require" that seed catalogs not be mailed out until the surge of Christmas mail was over. Now with U.P.S., FedEx, and others, that is no longer the case. You will begin to get your seed catalogs before December is over. If you don't misplace them - and if there is time between buying, wrapping, sending of parcels and the Christmas and New Year's parties, it may be restful to glance through these publications. First you'll see what new things will be available for gardens in the coming year ... you will be surprised at the new materials!

In the meantime, enjoy the holidays and pray for a good snow cover to protect your perennials, give us a good ski season, and a White Christmas. Merry Christmas to all!


Conservation Comm. discusses Groundwater contamination

Debbie Soule, from the Groundwater Protection Bureau of the Dept. of Environmental Services, met with the Bradford Conservation Commission on November 15 to discuss the importance of protecting groundwater and available protection methods. Soule said that all human activities have some impact on groundwater quality, but since World War II, the use of synthetic organic chemicals, such as pesticides, has contaminated groundwater in many areas. Until the 1970s, many substances were not known to be hazardous.

A program is available to address the problem of groundwater pollution, called Best Management Practices. This program has been adopted by business and industry, working together with the Wellhead Protection Advisory Committee.

If the Selectment agree, this program could be implemented by the Planning Board, Conservation Commission, or Health Officer. Implementation can be on a voluntary basis, by health and zoning ordinances, or by building codes and site plan reviews.


Members discussed the program and determined that more thought and discussion are needed. Some members felt there are already enough regulations in current ordinances, as well as BOCA and site plan reviews, to protect groundwater.



Variety of packages

Bed & Booth
Gift Certificates, Ts & Tanks
NEW BULBS!
Rte 114, Henniker
428-TAN-0 (8260)

**BALD SUNAPEE FLORIST
AND GARDEN CENTER**



- ◆ Christmas Trees and Roping
- ◆ Balsam Wreaths - all sizes, natural or decorated
- ◆ Holly, Boxwood, Poinsettias, Cyclamen, Amaryllis & paperwhites
- ◆ We wire flowers around the country & the world.
- ◆ We decorate HOUSES & BUSINESSES for the holidays.
- ◆ Fresh flower arrangements and centerpieces

Route 103 - Newbury Harbor - 763-4551
Open every day, Monday-Saturday 9-6, Sunday 10-4

December Calendar

Saturday, December 2

Advent Day, Baptist Church, see article, page 5

BWC Antiques & Craft Fair, at the Covered Bridge, 10:00-4:00

KRSD budget workshop, high school, 9:00-3:00

Historical Society building open 1:30-3:00 depending on weather, call 938-5386 for openings or appointments

Share registration, Warner CAP, 10:00-2:00, 4:00-6:00

Call 456-2207 for information.

Sunday, December 3

Christmas in the Country, see article, page 2

BWC Fair continues, 10:00-4:00

Inn Tours, noon - 5:00

Messiah Sing-Along, Baptist Church, 3:30-5:30

Christmas tree lighting, library, 5:00

Monday, December 4

Cemetery Trustees, call 938-5386.

Selectmen's meeting, town hall, 7:00

Tuesday, December 5

ZBA, town hall, 7:00

Fish & Game, Lake Todd Clubhouse, 7:00

Wednesday, December 6

Master Plan Update Committee, Fiske House, 9:00 am; open to the public

Library Trustees, library, 7:15

PTC at KRES Bradford, 7:00

Mike Hague, speaking on "Effective parenting during the holidays"

Thursday, December 7

KRSD budget workshop, high school, 7:00

Friday, December 8

Christmas Whist, church vestry, 7:00
Sponsored by the Food Pantry

Sunday, December 10

Christmas Tea, Rosewood, 4:00

Monday, December 11

Selectmen's meeting, town hall, 7:00

Tuesday, December 12

Planning Board, town hall, 7:30

KRSD budget workshop, high school, 7:00

Wednesday, December 13

Bradford Revolving Loan Committee, town hall, 7:00; open to the public

Budget Committee, town hall, 7:00

Road Committee, town hall, 7:00

Thursday, December 14

Bradford-Newbury Workshop, Friendship House, noon

KRSD School Board meeting, KRES Bradford, 7:15

Saturday, December 16

Annual Cookie Walk/Book Fair, KRES Bradford, 9:00 am -12:30 pm
free Christmas tree raffle; meet Santa

Santa's Outlet, town hall, 2:00-6:00

Children's story house, library, 3:00

Santa arrives at town hall, 4:00, followed by carols around the Christmas tree, 5:00

Monday, December 18

Selectmen's meeting, town hall, 7:00
Public hearings, 7:15

Business Association, Appleseed Inn, 7:00

Tuesday, December 19

Planning Board, town hall, 7:30

KRSD budget workshop, high school, 7:00

Wednesday, December 20

O.E.S. St. Peter's Lodge, 7:30

Thursday, December 21

KRSD School Board meeting, Sutton Elementary, 7:15



To list events for the month of January, call Lu Signorino, 938-2608.

Classified Ads

FOR SALE. 9 44" benches (old church pews); 17 6-spindle barrel-back chairs; 27 shallow barrel-back chairs; 1910 Detroit Jewel gas stove. Call Jim at 938-5553.

WANTED. Youth bed in good condition. Call 938-5482.

FOR RENT. Entire first floor (1 bedroom apartment) in Bradford. 23 acres on river, 1/2 miles from town. Secluded and private. Parking, plowing, W/D hookup, no pets/smokers. Security and references required. Ideal for single person or professional couple. Owner on premises. \$350/month + utilities. Call 938-2028.

FOR SALE. 1984 Saab, runs well, recently inspected, some rust, needs some work. Good winter car. \$500 or BO. Call 938-2692.

FOR SALE. Contemporary style couch, beige and brown stripes. \$400. Call 938-2675.

FOR SALE. Jotul wood stove. Red enamel finish, model 602C. Use free-standing or as fireplace insert. \$250. Call 938-2683.

WANTED. Loan of a Santa suite for December 16 KRES Bradford school event. Needed for morning. Call 938-2692.

FOR SALE. Holmes amplifier for electric or bass guitar, \$95. Pully, snatch block, splitting wedges, garden cart and misc. garden tools. Maple twin beds, 2 for \$59; complete with box spring and mattresses. Maple double bed, \$35, flat spring and innerspring mattress. Full-sized pine open-top hutch with drawers, dry-sink hinged to become serving area, doors and drawers below, \$350. Country-style sewing machine cabinet, \$75. Maple sewing machine cabinet with drop leaf, \$25. Dark stained sewing machine cabinet, needs refinishing, \$10. Opaque projector, like new, \$34.50. Combination lamp, incandescent & fluorescent, jointed, \$24.95. Hardcover books: Guptill oil painting step by step (a classic), \$5; Palmer encyclopedia of oil painting, \$10; The Art Pack—Frayling & Frayling & VanderMeer, \$20. Call 938-2523.

To place a FREE classified ad, please call Beth Rodd at 938-2692.